

OPERATIONS UPDATE



International Federation of Red Cross and Red Crescent Societies
Fédération internationale des Sociétés de la Croix-Rouge et du Croissant-Rouge
Federación Internacional de Sociedades de la Cruz Roja y de la Media Luna Roja
الاتحاد الدولي لجمعيات الصليب الأحمر والهلال الأحمر

INDONESIA: YOGYAKARTA EARTHQUAKE

Appeal No. MDRID001
19 September 2006

The Federation's mission is to improve the lives of vulnerable people by mobilizing the power of humanity. It is the world's largest humanitarian organization and its millions of volunteers are active in over 185 countries.

In Brief

Operations Update no. 13; Period covered: 26 August to 12 September 2006;

Appeal target: CHF 38,045,439 (USD 31 million or EUR 24 million);

Appeal coverage: 91.5%;

Outstanding needs: CHF 3.25 million (approx. USD 2.6 million or EUR 2.04 million)

(Click here to go directly to the attached Contributions List, also available on the website).

Appeal history:

- Preliminary appeal launched on 27 May 2006 for CHF 12.8 million (USD 10.4 million or EUR 8.2 million) for 8 months to assist 200,000 beneficiaries.
- Revised appeal was launched on 6 June for CHF 38 million to assist 325,000 beneficiaries for 12 months

Operational Summary:

Early recovery programmes of the Indonesian Red Cross (PMI), in conjunction with the Federation, move ahead with the speeding up of traditional shelters construction. More than 745 shelters have been completed in the targeted areas of Bantul and Klaten districts so far. Distribution of relief items is winding down, with more than 108,000 families receiving relief items so far. However, a few essential items are being distributed on the basis of the needs assessed by the PMI branches. The health situation in the affected areas remains stable as the PMI continues its long term health and sanitation activities with support from the Federation. In the meantime, a monsoon contingency plan has been prepared by the PMI and the Federation to better respond to the possible disasters in the forthcoming monsoon season.

For further information specifically related to this operation please contact:

- Indonesian Red Cross (PMI): Mr. Arifin M. Hadi (acting head of disaster management division); mobile: +62.811.943.952; telephone: +62.21.799.2325 ext. 222; email: arifinmhd@telkom.net
- Federation country delegation in Indonesia: Bob McKerrow (head of delegation); email: bob.mckerrow@ifrc.org; mobile: +62.811.824.859; fax: +62.21.7918.0905, Oeystein Larsen (head of sub-delegation, Yogyakarta); email: oeystein.larsen@ifrc.org; mobile: +62 811 1490 707
- Federation Southeast Asia regional delegation in Thailand: Bekele Geleta (head of regional delegation); email: bekele.geleta@ifrc.org; phone: +66.2.661.8201 ext 100; or Michael Annear (head of regional disaster management unit); email: michael.annear@ifrc.org; phone: +66.2.661.8201
- Federation secretariat in Geneva (Asia Pacific department): Josse Gillijns (regional officer); email: josse.gillijns@ifrc.org phone: +44.22.730.4224, fax: +41.22 733.0395; or Satchida Rana (senior assistant); email: satchida.rana@ifrc.org; phone: +44.22.730.4429; fax: +41.22 733.0395

Background

An earthquake with a magnitude of 6.3 on the Richter scale struck near the city of Yogyakarta in central Java at 05:54 hrs local time on 27 May 2006 causing extreme and widespread destruction. The earthquake epicentre was located some 20 km southeast of Yogyakarta at a depth of 10 km. Tremors were felt across the region, as far away as Semarang and Surabaya on the opposite coast of Java. There has been considerable loss of lives and injuries, with villages in more remote areas south of Yogyakarta as well as in and around Bantul most severely affected. The latest official figures of the earthquake's destructions remain at 5,749 people killed, over 38,000 injured, more than 127,000 houses completely destroyed and over 450,000 additional houses damaged. It is estimated that 1,173,742 people were made homeless.

Operational developments

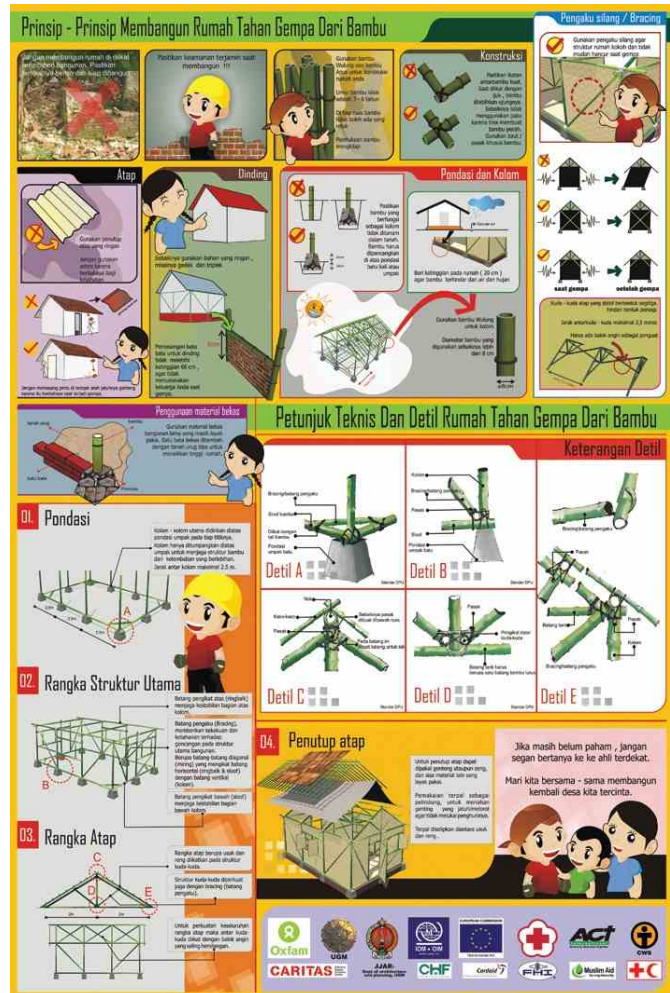
According to the shelter cluster group, all 300,000 families (whose houses were either completely destroyed or heavily damaged) have received at least a tent or a tarpaulin from the humanitarian community and the government three months after the earthquake. However, a large number of people still living in makeshift tarpaulin shelters will be very vulnerable as the rainy season approaches.

The PMI, in conjunction with the Federation, continues to focus on the speedy construction of traditional bamboo shelters in the targeted communities. More than 745 houses have been completed and communities who have enthusiastically accepted the model shelter are working closely to construct shelters in the spirit of *gotong royong* (a local Javanese community cooperative practice). While construction of the initially targeted 17,000 houses takes speed, a plan to construct an additional 15,000 similar houses has moved ahead.

Distribution of relief goods is winding down as long term recovery programmes take over. Communities are being supported to clean up and deepen wells and the PMI mobile clinics continue to provide home-based care to the patients in the affected areas.

Results of the post-relief distribution assessment in Bantul district have been received with beneficiaries expressing their satisfaction with the relief goods and the PMI/ Federation support. Results show shelter and food items as being the most appreciated of all relief goods. The PMI/ Federation plan to conduct an impact analysis survey amongst beneficiaries after relief distribution ends in September.

It is feared the approaching rainy season will adversely affect the already vulnerable population, with foreseeable landslides in the Mt. Merapi region as a result of accumulated ash and lava on mountain slopes. Furthermore rubble from collapsed houses may impede water drainage, causing flash floods in some low areas and makeshift shelters with limited sanitary arrangements may lead to an outbreak of water-borne diseases. Precautionary measures are being prepared with inter-agency discussions taking place and the United Nations (UN) Office for the Coordination of Humanitarian Affairs (OCHA) assuming the lead role for monsoon monitoring activities.



A poster in Indonesian explains the method to construct a bamboo shelter.

Indonesia: Yogyakarta Earthquake; Appeal no. MDRID001; Operations Update no. 13

The PMI and the Federation are now finalizing a monsoon preparedness plan, an outcome to a monsoon preparedness workshop. PMI branches, with support from the PMI headquarters and the Federation, will form branch response teams to identify disaster prone areas in the districts, develop plans, and remain alert throughout the monsoon period. PMI and the Federation also plan to stock relief goods of food parcels (10,000), hygiene parcels (15,000), sleeping mats (30,000), tarpaulins (10,000), baby kits (3,000) and emergency health kits. A water purification plant and three water tankers will be on standby in case of an emergency. Some 70,000 sandbags will be distributed to communities most vulnerable to floods and a further 40,000 blankets to earthquake affected people living in higher altitude areas hit by strong cold winds.

Red Cross and Red Crescent action - objectives, progress, impact**Emergency relief (food, non-food and emergency shelter)**

Overall Goal: Beneficiaries have the necessary immediate support to meet their basic needs for food, non-food items and shelter until their permanent needs are met for the long-term.

Objectives:

- **Food:** 65,000 families (approximately 325,000 beneficiaries) have supplementary food support until such time as they are able to resume their own income generating activities.
- **Non-food items:** 65,000 families (approximately 325,000 beneficiaries) have the necessary household items and basic economic support to restore domestic stability and their own capacity to initiate their recovery is reinforced.
- **Emergency shelter:** 65,000 families (approximately 325,000 beneficiaries) are provided with the appropriate type of emergency shelter, tools and materials to support their immediate recovery needs, with consideration of temporary, intermediate requirements for coping with the pending monsoon rain season that normally starts in September/October.

The distribution of relief items is winding down as focus shifts to recovery programmes. The number of families receiving relief support (major relief items of food parcel, hygiene and shelter materials) has reached more than 108,000. Initially, relief items consisted of eight items (for details, please see update no. eight) but due to the changing situation, it has been revised to meet actual needs of affected people more realistically.

Distribution of some relief items like hygiene and food parcels will continue in the slum areas in Yogyakarta city which were identified as receiving no relief support even after three months of the disaster. Based on this, PMI is preparing a list of families which will receive food and hygiene parcels in the coming weeks. Similar gap filling distributions will continue till the end of September when emergency relief distribution ends. The distribution of tool kits has ended and reached 46,715 families (one kit per five families- total of 9,343 kits). After relief distribution ends in September, the PMI and Federation plan to conduct an impact analysis amongst beneficiaries of the relief distribution. Also planned are a lessons learnt workshop and training to PMI volunteers on relief management.

Table: Food and non-food distribution by PMI/Federation

District	No. Families	Tents	Tarpaulins	Tool kits	Baby Kits	Family Kits	Food Parcels	Hygiene Kits	Sleeping Mats
Bantul	42,184	5,898	48,231	5,111	6,376	2,316	35,809	36,168	47,132
Klaten	35,179	3,640	20,943	2,613	4,174	2,821	23,406	20,379	28,569
Yogyakarta	1,343	301	1,464	-	11	729	2,006	796	27
Sleman	12,390	575	20,718	-	1,914	1,776	13,644	14,360	11,362
Boyolali	2,212	142	317	-	421	-	825	2,521	569
Kulon Progo	5,445	1,002	8,171	801	1,205	-	5,053	6,158	9,743
Gunung Kidul	10,210	318	11,100	818	3,022	-	9,697	9,618	17,004
Total	108,963	11,876	110,944	9,343	17,123	7,642	90,440	90,000	114,406

Early recovery/ shelter

The emergency shelter cluster coordinated by the Federation, estimates that all 300,000 affected families have received tents and tarpaulins. The PMI, with support from the Federation, has distributed 11,876 tents and 110,944 tarpaulins contributing to that figure (though according to SPHERE standards, these types of shelters are deemed insufficient to provide support as they lack proper roofing and walls).

The government's position on possible support to the affected families is now clearer, with the government in Yogyakarta province planning to finance 47,000 self-built houses by the end of 2006 out of the 300,000 destroyed or heavily damaged houses in the provinces of Yogyakarta and central Java. Similarly, the central Java government is supporting permanent construction by providing assistance and available resources to everyone with a destroyed or badly damaged house. Nevertheless, many families will still face the rainy season in emergency shelters of tarpaulins and tents.

There are concerns that the onset of rainy season will mean people living in make-shift shelters being susceptible to diseases and sicknesses; of particular concern is acute respiratory infection, which sustained in remaining a morbidity threat in the past months. Obviously, at most risk will be the elderly and children living in these sub-standard emergency shelters.

The PMI and Federation continue to support bamboo shelter construction in Klaten and Bantul districts where the model shelter provided by the PMI and Federation has been enthusiastically received by the communities there. More than 745 shelters are complete (most of them in Gantiwarno through the shelter construction competition) and targeted communities in two other districts are in the process of buying tool kits to start the construction of 5,680 more houses in the coming weeks.

The Indonesian local governments and the PMI and Federation have agreed to expand the early recovery programme to two new sub-districts of Bantul and Klaten. A team of volunteers will set up offices in the villages of Pandak sub-district of Bantul district and families from half of the 8,071 houses destroyed will receive support with bamboo shelter construction. It is anticipated that the other half of the population will rebuild their houses with their own resources or assistance from other organizations. Financial training to the beneficiaries will start this week.

Volunteers from the districts of Sleman, city of Yogyakarta, Gunung Kidul and Kulon Progo are attending training and will join the volunteer teams in Dlingo and Gantiwarno for field experience before starting construction work in the new districts. In the meantime, 45 new volunteers have been selected and trained in Sleman district to speed up the construction of shelters while trained volunteers will be deployed to new areas being identified for shelter construction support. The first batch of university undergraduates have completed their field work while Atma Jaya University, Yogyakarta has offered to send 200 new undergraduates to work with the PMI and Federation in helping the communities in any possible way.

Logistics support

As relief distribution scale down, vehicle fleet has reduced significantly with the return of trucks loaned from the International Office for Migration (IOM) and PMI. The Federation is now concentrating on control and reconciliation of data to identify gaps in the supply chain. Although stocks of relief items have gone down, the Federation is looking for a warehouse to stockpile relief items to prepare for the coming monsoon. The present rubble hall will be dismantled and handed over to the PMI once the new warehouse has been arranged. The Federation is also identifying the capacities of branches to preposition relief stocks, and plan to train branches on warehouse management for eventual takeover from the Federation.

Health and Care

Overall goal: The mortality and morbidity amongst the affected population is reduced to pre-disaster levels by addressing immediate basic health care needs and future health risks through preventative and basic health care interventions.

The health situation in earthquake areas remains stable and PMI mobile clinics and physiotherapy teams continue to provide home based care to injured patients.

Data from provincial health office (PHO) and World Health Organization (WHO) reports continue to show acute respiratory infection as the leading post earthquake morbidity threat. The number of cases has recently declined but is expected to rise with the onset of the rainy season and has led to the PMI and the Federation disseminating information on possible diseases during a monsoon season.

Objective 1: To provide psychosocial support programmes (PSP) to affected communities in districts severely affected by the earthquake and to PMI volunteers supporting the response.

The American Red Cross psychological team plan to visit psychosocial support programme areas to reassess current and future needs, and develop a coherent plan with the PMI with more activities.

Objective 2: Reduce the impact of the most common diseases and ailments seen in post disaster situations, including epidemics.

The PMI health promotion campaign commenced with a series of radio broadcasts on common health problems. Listeners obtained useful information and via open telephone lines, were encouraged to call and engage in dialogue. One radio discussion dealt with asbestos used in building materials and highlighted the health risks associated with dust from damaged buildings. Future sessions will include tetanus awareness, prevention of dengue fever and hygiene promotion.

The second round of tetanus vaccinations (against diphtheria and measles) was completed in Klaten, central Java and will continue in Yogyakarta province next week.

Objective 3: To provide 325,000 beneficiaries with access to preventive, basic clinical and physical health and rehabilitation services.

The PMI in Bantul district has expanded mobile clinics from two to four units, functioning seven days a week. The mobile clinics are also providing services in Sleman and Klaten districts, two and four days a week respectively. All mobile clinics see approximately 40 to 80 patients per day.



Cleaning of contaminated wells continues in Bantul district.

Mobile physiotherapy teams commenced their home-based care programme targeting an estimated 250 patients requiring ongoing rehabilitation therapy in Bantul. A master database developed by Handicap International ensures all cases are traceable in the future and people have access to services when they need it. Further assessments in Klaten district show no new cases of severely injured people and those previously seen have been integrated into the referral system operated by Handicap International.

PMI volunteers in the early recovery programme areas are assisting the health team in identifying families with disabled members to ensure that they are prioritized for shelter support and modifications such as wheelchair access are incorporated into the shelter design.

Indonesia: Yogyakarta Earthquake; Appeal no. MDRID001; Operations Update no. 13

Meanwhile, the medical logistics team has completed an assessment of PMI's medical logistics capacity at branches in Bantul and Klaten and will begin on- job training for PMI volunteers to manage their stocks and improve coordination with the central warehouse in Yogyakarta.

Objective 4: To support and coordinate efforts with Movement partners and international partners in support to the PMI and its government (MOH).

The PMI, together with *Lindungan Masyarakat* (civil defence), carried out a mock disaster response exercise for its trainees (altogether 186 participants) which was held on Parangritis beach in the last week of August. PMI, working with the local *puskesmas* (health centres), was responsible for the first aid part and provided feedback on how the response could have been improved in terms of first aid.

Objective 5: To ensure the target population has access to adequate and safe water supply, sanitation and hygiene promotion, materials and facilities to prevent significant outbreaks of water supply, sanitation and hygiene related disease.

The PMI, with support from the Federation, continues to provide 44,600 litres of water to 2,230 people in Kemalang sub-district of Klaten. This support is expected to continue for a few more weeks. Training of volunteers was followed by well cleaning work in the district of Bantul with 2,000 wells targeting for cleaning within six weeks to benefit 12,000 people. Deepening of wells commenced this week, with three drilling companies deepening 576 wells in Srihardono village so far.

Awareness activities continue to empower communities with health and sanitation issues. More radio discussions on vector control, hygiene promotion, physiotherapy and similar issues are planned after the success of the last radio programme in stoking people's interest and participation in health discussions.

[Contributions list below; click here to return to the title page.](#)

The International Federation undertakes activities that are aligned with its Global Agenda, which sets out four broad goals to meet the Federation's mission to "improve the lives of vulnerable people by mobilizing the power of humanity".

Global Agenda Goals:

- *Reduce the numbers of deaths, injuries and impact from disasters.*
- *Reduce the number of deaths, illnesses and impact from diseases and public health emergencies.*
- *Increase local community, civil society and Red Cross Red Crescent capacity to address the most urgent situations of vulnerability.*
- *Reduce intolerance, discrimination and social exclusion and promote respect for diversity and human dignity.*

All International Federation assistance seeks to adhere to the [Code of Conduct for the International Red Cross and Red Crescent Movement and Non-Governmental Organizations \(NGO's\) in Disaster Relief](#) and is committed to the [Humanitarian Charter and Minimum Standards in Disaster Response \(Sphere\)](#) in delivering assistance to the most vulnerable.

For longer-term programmes in this or other countries or regions, please refer to the Federation's Annual Appeal. For support to or for further information concerning Federation programmes or operations in this or other countries, or for national society profiles, please also access the Federation's website at <http://www.ifrc.org>

For longer-term programmes, please refer to the [Tsunami plan of action 2005-2010](#).

Indonesia - earthquake

ANNEX 1

APPEAL No. MDRID001

PLEDGES RECEIVED

19/09/2006

DONOR	CATEGORY	QUANTITY	UNIT	VALUE CHF	DATE	COMMENT
-------	----------	----------	------	-----------	------	---------

CASH

REQUESTED IN APPEAL CHF ----->				38,045,439	TOTAL COVERAGE 91.5%	
ALBANIAN - RC		10,000	USD	12,113	01.06.06	
AMERICAN - RC		219,000	USD	265,275	30.05.06	
AMERICAN - GOVT/USAID-OFDA		1,000,000	USD	1,211,300	02.06.06	
AMERICAN - GOVT/USAID-OFDA		925,000	IDR	121,175	09.06.06	
AMERICAN - RC		179,250	USD	221,015	25.07.06	PROCUREMENT OF 80000 SLEEPING MATS
AMERICAN - RC		1,000,000	USD	1,228,200	13.09.06	STOCK REPLENISHMENT TARPAULINS, PSYCHO-SOCIAL PROGRAM, DISASTER PREPAREDNESS
ANDORRA - GOVT		20,000	EUR	31,400	11.07.06	
ANDORRA - GOVT		30,000	EUR	47,267	12.09.06	
AUSTRALIAN - GOVT		850,000	AUD	786,250	14.06.06	EMERGENCY RELIEF
AUSTRALIAN - RC		200,000	AUD	185,000	30.06.06	FOOD, NON-FOOD, SHELTER
BELGIUM - GOVT		257,866	EUR	405,623	14.07.06	PROCUREMENT OF HYGIENE PARCELS
BOSNIA & HERZEGOVINA - RC		25,565	EUR	40,137	28.06.06	
BRITISH - RC		150,000	GBP	340,650	28.05.06	
BRITISH - RC		200,000	GBP	456,000	07.06.06	
BRITISH - GOVT/DIFD		980,392	GBP	2,235,294	07.06.06	OPERATIONAL COSTS, OVERHEADS
BRITISH - PRIVATE DONOR				1,130	29.06.06	
CAMBODIA - PRIVATE DONOR		100	USD	121	31.05.06	
CANADIAN - RC		100,000	CAD	112,100	27.05.06	
CANADIAN - GOVT		500,000	CAD	560,500	28.05.06	
CANADIAN - GOVT/CIDA/HAPS		643,500	CAD	714,285	09.06.06	
CANADIAN - GOVT/CIDA/HAPS		495,000	CAD	545,490	23.06.06	
CHINA - HONG KONG RC BRANCH		200,000	HKD	32,500	28.05.06	RELIEF ITEMS
CHINA - HONG KONG RC BRANCH		2,000,000	HKD	311,800	07.06.06	EMERGENCY SHELTER
CHINA - MACAU RC BRANCH				30,000	09.06.06	SHELTER, MEDICINES
CROATIA - GOVT/RC				220,000	30.05.06	
CYPRUS- RC				10,834	15.06.06	
CZECH - RC		4,494	USD	5,444	31.05.06	
DANISH - RC				38,670	27.05.06	
DANISH - GOVT				795,395	27.06.06	
EGYPTIAN - RC		50,000	USD	60,565	07.06.06	
ECHO (03002)		2,165,397	EUR	3,375,854	02.06.06	
ESTONIA - RC		32,000	EUR	49,888	05.06.06	
FINNISH - RC		80,000	EUR	124,720	31.05.06	
FINNISH - GOVT		200,000	EUR	311,800	31.05.06	
HELLENIC - RC		20,000	EUR	31,180	14.06.06	
IRISH - RC		50,000	EUR	77,950	31.05.06	SHELTERS
IRISH - GOVT		500,000	EUR	779,500	30.05.06	
IRISH - RC		106,000	EUR	166,420	10.07.06	EMERGENCY RELIEF ITEMS
IRISH - RC		118,000	EUR	185,915	04.09.06	SHELTER PROGRAMME
ISLAMIC MEDICAL ASSOCIATION		10,000	USD	12,113	08.06.06	
ITALIAN - GOVT		500,000	EUR	779,500	16.06.06	
JAPANESE - GOVT		1,000,000	USD	1,211,300	02.06.06	HEALTH & WATER SANITATION ACTIVITIES
JAPANESE - RC		100,000,000	JPY	1,081,000	04.06.06	
JAPANESE - RC		200,000,000	JPY	2,162,000	09.06.06	CHF 60'000 PROCUREMENT OF 15000 TETANUS VACCINE
JAPANESE - RC		244,400,000	JPY	2,637,076	21.08.06	TOOLKITS DISTRIBUTION

Indonesia - earthquake

ANNEX 1

APPEAL No. MDRID001

PLEDGES RECEIVED

19/09/2006

DONOR	CATEGORY	QUANTITY	UNIT	VALUE CHF	DATE	COMMENT
KOREAN - RC		270,529,000	KRW	348,982	22.08.06	
LATVIA - RC		25,000	EUR	39,250	04.07.06	
LIBYAN - RC				10,000	30.05.06	
LIECHTENSTEIN - RC				30,000	13.07.06	
LUXEMBOURG - GOVT		100,000	EUR	155,900	13.06.06	
LUXEMBOURG - RC		30,000	EUR	46,770	06.06.06	
MONACO - RC		31,135	EUR	48,881	06.06.06	
NETHERLANDS - GOVT		1,000,000	EUR	1,579,000	30.05.06	
NETHERLANDS - RC		400,000	EUR	628,000	07.07.06	RELIEF SUPPLIES
NETHERLANDS - NATURAL DISASTER FUND		10,000	EUR	15,700	13.07.06	
NEW ZEALAND - GOVT		500,000	NZD	399,500	29.05.06	
NEW ZEALAND - RC		250,000	NZD	194,500	20.06.06	
NORWEGIAN - GOVT/RC		3,500,000	NOK	697,550	28.06.06	
OPEC FUND		600,000	USD	726,780	09.06.06	
PRIVATE DONORS ON LINE				96,566	26.06.06	
QATAR - RC				115,718	13.07.06	PROCUREMENT OF 1700 BODY BAGS, 250 TARPULINS, 3 EMERGENCY HEALTH KITS, 100 DRESSING MODULES, 25000 SURGICAL GLOVES
SENEGAL - PRIVATE DONOR		100	EUR	157	01.06.06	
SINGAPORE - GOVT/RC		150,000	SGD	115,335	05.06.06	RELIEF ITEMS
SINGAPORE - PRIVATE DONOR		50,000	EUR	77,950	01.06.06	
SLOVENIA - GOVT		41,606	EUR	65,322	05.07.06	
SWEDISH - GOVT		3,000,000	SEK	509,460	30.05.06	
SWEDISH - GOVT		3,800,000	SEK	639,996	27.06.06	
SWISS - RC				100,000	29.05.06	
SWISS - PRIVATE DONORS				17,013	31.05.06	
USA - PRIVATE DONORS				486	01.06.06	
USA - NY / PRIVATE DONORS		446	USD	549	13.07.06	
USA - NY / KRAFT FOODS INC.		25,000	USD	30,750	13.07.06	
USA - NY/FIRST DATA WESTERN FOUND.		150,000	USD	184,500	13.07.06	
WHO/VERF - STAFF MEMBERS				4,000	29.05.06	
SUB/TOTAL RECEIVED IN CASH				30,890,364	CHF	81.2%

KIND AND SERVICES (INCLUDING PERSONNEL)

DONOR	CATEGORY	QUANTITY	UNIT	VALUE CHF	DATE	COMMENT
					13.09.06	
AMERICAN - RC		82,000	USD	101,106		RELIEF ERU STAFF
AMERICAN - RC				444,000		80000 SLEEPING MATS, 1 ERU RELIEF COMPLETE, TRANSPORT

Indonesia - earthquake

ANNEX 1

APPEAL No. MDRID001

PLEDGES RECEIVED

19/09/2006

DONOR	CATEGORY	QUANTITY	UNIT	VALUE CHF	DATE	COMMENT
AMERICAN - GOVT/USAID		361,500	USD	443,994		DIRECT ASSISTANCE: 150 TARPAULINS , 10200 JERRYCANS, 5004 HYGIENE KITS, TRANSPORT
BELGIUM - RC				612,605		19000 TARPAULINS, 3 EMERGENCY HEALTH KITS, TRANSPORT/INSUR.
BRITISH - RC		19,410	GBP	45,418		ERU LOGISTICS MK1 MODULE
CANADIAN - RC				191,164		10000 TARPAULINS
DANISH - RC		163,733	DKK	34,629		ERU TELECOMMUNICATION
GERMAN - RC				160,528		440 ANTITETANUS IMMUNOGLOBULINS, 15000 TETANUS VACCINE, 1837 MINOR SURGERY SETS, 200 MONO PP, 1000 AXILLARY CRUTCH, 30 AMOXYCILLIN, 100'000 PROTECTION MASKS, TRANSPORT
JAPANESE - RC				1,851,618		15000 TETANUS VACCINES, 2 EMERGENCY HEALTH KITS, 10000 INFUSION SETS, 10000 IV CANNULA, 6235 AXILLARY CRUTCH , 9600 AMOXYCILLIN, 24000 TARPAULINS,
SPANISH - RC				22,578		10 KITS WATERTANKS, ERU RELIEF COMPLET
SUB/TOTAL RECEIVED IN KIND/SERVICES				3,907,640	CHF	10.3%

ADDITIONAL TO APPEAL BUDGET

DONOR	CATEGORY	QUANTITY	UNIT	VALUE CHF	DATE	COMMENT
CHINESE - RC		50,000	USD	60,565	29.05.06	DIRECT ASSISTANCE
IRANIAN - RC		254,720	USD	308,542	07.06.06	DIRECT ASSISTANCE: 1500 PCES TENTS, 1500 SETS GROUND SHEETS, 5000 PCS SOAP
JAPANESE - RC				26,800	05.09.06	4 DISPENSARY TENTS, 1 EMERGENCY HEALTH KIT
QATAR - RC		200,000	USD	246,000	06.07.06	DIRECT ASSISTANCE: 200 HOSPITAL BEDS, ORTHOPEDIC EQUIPMENT, RELIEF DELEGATE
UNITED ARAB EMIRATES		1,073,370	USD	1,300,173	04.06.06	DIRECT ASSISTANCE: 35 MT DRUGS, TENTS, BLANKETS
SUB/TOTAL RECEIVED				1,942,080	CHF	