

OPERATIONS UPDATE



International Federation of Red Cross and Red Crescent Societies
Fédération Internationale des Sociétés de la Croix-Rouge et du Croissant-Rouge
Federación Internacional de Sociedades de la Cruz Roja y de la Media Luna Roja
الاتحاد الدولي لجمعيات الصليب الأحمر والهلال الأحمر

KENYA: FLOODS

Preliminary Appeal no. MDRKE003

(Glide no. FL-2006-000159-KEN)

24 November 2006

The Federation's mission is to improve the lives of vulnerable people by mobilizing the power of humanity. It is the world's largest humanitarian organization and its millions of volunteers are active in over 185 countries.

In Brief

Appeal No. MDRKE003; Operations Update no. 1; Period covered: 17 to 24 November 2006.

Please note that the appeal coverage reflected in the updated list of contributions will be made available shortly.

[<Click here to go directly to the map of the affected area>](#)

Appeal history:

- Preliminary Emergency Appeal was launched on 17 November 2006 for CHF 9,848,235 (USD 7,864,934 or EUR 6,157,653) – <http://www.ifrc.org/docs/appeals/06/MDRKE003ap.pdf> – to assist 300,000 beneficiaries for 6 months.
- Disaster Relief Emergency Funds (DREF) allocated: CHF 150,000 (USD 122,130 or EUR 95,205) released on 7 November 2006; CHF 400,000 (USD 330,818 or EUR 252,715) released on 24 November 2006.

Outstanding needs: While rain projections are higher than the normal average, they are still significantly below the rains of 1997, which caused unprecedented flooding in Kenya. The scope and size of the floods has made detailed assessments extremely difficult, but based on the information to date, the humanitarian needs are at crisis proportions. Given the significant logistics and transport constraints, cash contributions are urgently required, and donors are encouraged to provide unearmarked support to enable a flexible response to operational requirements.

Operational Summary: As the unusually heavy seasonal rains continued to pound Kenya and neighbouring countries, fears of outbreaks of water-borne diseases are adding to the already devastating humanitarian situation. Some 300,000 people have reportedly already been affected by the floods in several regions of the country (see attached map), including up to 160,000 Somali refugees who have recently fled their country seeking shelter and assistance in northern Kenya. The floods have destroyed and damaged considerable quantities of crops and farmland, provoking fears of renewed food insecurity in the affected regions over the months to come. The floods have destroyed thousands of latrines in the flood-affected areas – including in the refugee camps housing the Somalis – increasing the potential for outbreaks of diarrhoeal diseases and malaria.

To begin to satisfy the enormous needs, the following relief items have been mobilized and are in the pipeline, supporting the Kenya Red Cross Society (KRCS) efforts to deliver immediate assistance: 10,000 jerry cans, 20,000 blankets, 10,000 tarpaulins, and 40,000 mosquito nets, 4,000 kitchen sets. Hundreds of KRCS volunteers are working round the clock to provide assistance to the affected populations. The main operational focus at the moment is on the North Eastern Province (home to the refugee camps) where the volunteers are conducting hygiene awareness campaigns in an effort to prevent the spread of diseases. The volunteers are also distributing water treatment tablets. With further rains expected, the KRCS, with support provided by the International Federation, and other partners, is now pre-positioning relief supplies to be used in the western part of the country, focusing on areas prone to floods. But lack of access – broken roads and bridges – remain the main challenge for the relief efforts in the disaster-stricken areas. As a result, food and other supplies can only be brought in by air, currently by a United Nations airlift operation.

To support the KRCS operation, the International Federation has issued an international emergency appeal for funds – a total of nearly eight million dollars – which are to be used to procure food and other relief materials and provide logistical support. The appeal aims to support the KRCS in providing logistical support to distribute food for a total population of 300,000 people. About 50,000 households will receive blankets, tarpaulins, bars of soap, jerry cans, kitchen sets and mosquito nets. In addition, 600 tonnes of seeds and fertilizers will be distributed to affected farming communities. Other planned activities include the distribution of water purification tablets, setting up water storage facilities, the construction of emergency latrines and the promotion of hygiene messages. Medical supplies will be provided to health facilities to contain diarrhoeal outbreaks.

The International Federation has already allocated CH 150,000 (USD 120,000 or EUR 94,000) from its Disaster Relief Emergency Fund to assist KRCS in responding to the disaster. It is coordinating its efforts with all humanitarian actors working in Kenya. Based on a request and discussion with the KRCS, the Federation has made another release of CHF 400,000 (USD 330,818 or EUR 252,715) from its DREF. Similar to the initial allocation, the funds are intended to be used to support the immediate delivery of relief items and to cover the associated high costs of transport by air or boat to the flood afflicted areas.

Background



Residents of Garissa town, 390km (242 miles) from Kenya's capital – Nairobi, carry carpets as they wade through water on 22 November 2006 (REUTERS/Daud Yussuf/courtesy of www.alertnet.org)

Heavy downpours are now being experienced in parts of the country in November after a brief lull in the October-December 2006 short rains season. Earlier in October, heavy flooding led to the loss of 19 lives, affecting approximately 30,000 people and displacing about 8,000 others in Isiolo, Garissa, Turkana, Lodwar, Moyale, Wajir, Mandera and Kisumu in the Coast, Western and Northern Eastern provinces of Kenya. In October 2006, the onset of the rains was timely over most parts of the country with various areas experiencing rainfall between the second and third week of the month. According to the Kenya Meteorological Department (KMD), the heavy rainfall was quite evident in Mombasa and Moyale on 15 and 17 October, which recorded 110.5mm and 124.6 mm of rainfall respectively within a few hours. Furthermore, rainfall amounts received in October 2006 alone in the North Eastern Province and the coastal strip were so high that they exceeded the long term usual amount for the October-December rainy season.

The situation is further aggravated given that the rains were accompanied by unusual and severe flooding, which the communities have not adapted to. The majority of the districts currently affected by the floods are only just beginning to recover from the effects of the prolonged drought that ravaged most parts of Kenya in late 2005 and weakened the coping mechanisms of the affected people.

The rains again resumed in November with renewed intensity. 23 people have lost their lives and approximately 300,000 have been affected in different parts of the country. The rains have caused severe destruction to infrastructure, with bridges washed away and roads linking towns cut off making transportation impossible for commuters and traders. The rains have also left many commuters stranded for days without food. Students sitting for national examinations have also been affected. Crops in farmlands have been destroyed, increasing fears of renewed food insecurity – as a result of crop destruction – among the affected districts.

The timely onset of the 2006 short-rains over some agricultural areas of the country was beneficial to farmers who planted in the right time. According to KMD, pasture for livestock was expected to thrive in the pastoral areas of North Eastern Province. If the rains pour consistently into December, it will reduce drought and food insecurity in that part of the country, as well as positively increase the water levels in dams, wells, shallow pans, boreholes and the general water table in drought-stricken areas. The level of water for hydroelectric power generation was also expected to improve due to the good rains in the catchments areas, noted the KMD. Forecasts indicate that most parts of the country are likely to experience enhanced rainfall into December 2006.

Kenya: Floods; Preliminary Emergency Appeal no. MDRKE003; Operations Update no. 1

Responding to a request from the Kenya Red Cross Society (KRCS), the International Federation launched a Preliminary Emergency Appeal in order to support the national society to respond to immediate needs of the people affected by flooding. This appeal was largely based on the KRCS Preliminary Appeal launched on 16 November 2006. While this Preliminary Emergency Appeal responded to the immediate needs in Kenya, the flooding is considered regional in nature. The situation is reportedly equally serious in Somalia, Ethiopia, Sudan, Tanzania, and other neighbouring countries. In Sudan and Ethiopia, the Federation will support the national societies to adjust the emergency flood operations currently being implemented (please refer to the Federation website for these two operations). In Tanzania, Somalia and other countries potentially affected, the Federation will provide support and assistance to monitor the situation, and may launch separate emergency Appeals depending on the needs.

Table 1: Impact of flooding across the country (based on preliminary assessment and available information)

Province	Populations affected	Damages	Threats
Central	<ul style="list-style-type: none"> • 34 families affected when houses submerged. • Total of 315 households affected. 	<ul style="list-style-type: none"> • 53 houses submerged in Nyeri. 	<ul style="list-style-type: none"> • Risks of more flooding and landslides.
North Eastern	<ul style="list-style-type: none"> • Over 165,700 people affected in Isiolo, Ngarmara, Atan, Alkodhi, Mandera, Moyale, Garissa and Dadaab. 	<ul style="list-style-type: none"> • Road over flooded or impassable. • Three primary schools and one nursery school flooded. • 365 latrines damaged. • 500 houses destroyed in Moyale. • Ijaara District cut off. • Ifo refugee camp destroyed 	<ul style="list-style-type: none"> • Threats of disease outbreak in Marsabit due to the collapse of latrines. • Fears of more flooding. • Poor road network thus delayed distribution of relief items.
Eastern and Coast	<ul style="list-style-type: none"> • 10,000 affected in Tana River District. • 80 affected in Garsen. • One child swept by floods. 	<ul style="list-style-type: none"> • Tana River is currently overflowing due to the overflowing of Kiambere Dam. • Collapsed pit latrines. 	<ul style="list-style-type: none"> • Possibilities of further damages due to release of water from dams. • Risks of water borne disease following water contamination. • Poor accessibility.
Nyanza	<ul style="list-style-type: none"> • Normal rains have been experienced in Migori District. 	<ul style="list-style-type: none"> • Houses destroyed by strong winds. • Damaged roads. 	<ul style="list-style-type: none"> • Rapid increase in water levels. • Risks of water-borne/parasitic diseases.
Western	<ul style="list-style-type: none"> • 4,200 people displaced In Busia due to flooding in Maduma area. 	<ul style="list-style-type: none"> • A high school in Vihiga District extensively damaged and had to be closed. 	<ul style="list-style-type: none"> • Risks of Malaria and pneumonia emerged.

Operational developments

The KRCS is responsible for managing this operation (lead agency and role), with support from the International Federation and other partners. The national society (NS), together with partners, conducted an aerial assessment in Malindi, Kilifi, Tana River and Ijaara districts to determine the extent of the damage to infrastructure and livelihoods. Another assessment has been conducted involving the KRCS secretary general, government officials and UN agencies where the assessment team visited the North Eastern and Eastern provinces. Using two vehicles, the Garissa branch of the KRCS sent evacuation warnings to communities in neighboring areas to move to safer ground, 20km from either side of the river Tana due to the overflowing Kiambere Dam. The area District Commissioner confirmed that the 7-folks dam waters have been released due to overflow. The national society hired 3 local boats and improvised water raft, in partnership with the Municipal Council, to complement rescue efforts in Garissa. The branch sent its Red Cross Action Team to assist in ferrying the people injured in the floods to the District Hospital and giving first aid to those in need.

The KRCS has so far distributed food and non-food items – including blankets, jerry cans, tarpaulins, chlorine tablets and soap – to affected populations across the country. 50 metric tonnes (MT) of UNIMIX have been sent to

Kenya: Floods; Preliminary Emergency Appeal no. MDRKE003; Operations Update no. 1

Kwale District for distribution and another 20 MT has been sent to Isiolo. Garissa District has received oil, rice, canned beans and 1,200 litres of water. The total value of food and non-food items distributed, according to the KRCS statistics, is KES 12 million (CHF 208,582). In Budalangi, the NS organized relief distribution for 400 families. It has also been very prominent in the evacuation process in Garsen and has provided relief items.

Table 2: Distribution of food items to beneficiaries in North Eastern Province

District	UNIMIX (MT)	Vegetable oils (MT)	Sugar (MT)	Wheat flour (MT)	Maize flour (MT)	Pulses (MT)	Cereals (MT)
Moyale	2.05	0.37	1	1	0	0	0
Wajir	16	0	0	0	0	0	0
Isiolo	20	0	0	0	0	0	0
Turkana	1.5	0	0	0	158	0	0
Kwale	50	2	0	0	0	2	2
Total	89.55	2.37	1	1	158	2	2

According to the United Nations High Commission for Refugees (UNHCR), which is airlifting emergency supplies to the Dadaab region, bad weather is hampering efforts by aid agencies to evacuate tens of thousands of Somali refugees from their flooded camps in a remote region of north eastern Kenya. Roads between the three camps (Dadaab, Kakuma and Ifo) have also been severely eroded by the fast-flowing floodwaters. Several Transport Support Unit (TSU) trucks carrying food rations encountered difficulties in the knee-deep mud. A massive logistical operation got under way to move the 55,000 population from Ifo sub-camp to a site 15 km away, adjacent to Hagadera sub-camp, which is home to more than 50,000 refugees – mostly from Somalia. The new camp is a few meters higher than Ifo camp. According to the UNHCR, the main challenge is to build a camp from scratch with the refugees already onsite. But despite the huge logistical challenge, it was the welfare of the refugees that is of paramount importance. The UN refugee agency will have vast water-bladders in place, to store fresh drinking water, while five boreholes are to be dug over the coming months. However, many refugees are opting to remain in Ifo because of the absence of immediate services in the new camp. They hope to re-build their properties despite warnings that more heavy rains will bring further flooding. The World Food Programme (WFP) has launched a three-month regional air operation to provide fixed-wing aircraft and helicopters to transport aid workers and humanitarian assistance to more than a million people in flooded areas of Kenya and neighboring southern Somalia. The UN Central Emergency Response Fund will cover the cost of buying the biscuits and transporting them to Kenya



KRCS volunteers offload relief items from a Kenya Air force aircraft.

Some local organizations have also shown interest in donating towards the KRCS floods Appeal. One such organization is the Village Market, which has launched a donation appeal to support the NS and thus the affected people under the theme, “Join the Village Market help the flood victims”. Village Market is appealing to its customers to help support the people affected by the floods. The KRCS has also released bank account details for the corporate sector, organizations and the general public to donate.

Red Cross and Red Crescent action - objectives, progress and impact

Emergency relief (food and basic non-food items)

Objective 1: Provision of logistical support to food donations from Government of Kenya and other donors for 2 months for a total population of 300,000 persons.

Progress/achievements: The Government of Kenya seconded two trucks to the national society for logistical support, including dispatching of food items to the beneficiaries.

Kenya: Floods; Preliminary Emergency Appeal no. MDRKE003; Operations Update no. 1

Objective 2: Provision of non-food items to 50,000 households.

Progress/achievements: The KRCS has distributed non-food items – including blankets, kitchen sets, jerry cans, tarpaulins, and soap and chlorine tablets – to the affected areas.

Table 3: Distribution of non-food items to the beneficiaries

District	Blankets	Kitchen sets	Jerry cans	Tarpaulins	Soap	Chlorine tablets	Bladder tanks
Kwale	2,740	936	1,400	850	2,700	0	0
Kilifi	0	250	250	250	1,000	0	3
Lodwar	0	200	400	0	800	0	0
Nyeri	174	87	0	87	188	0	0
Kisumu	850	343	1,260	500	4,000	140,000	0
Garissa	650	320	520	320	1,275	140,000	0
Isiolo	1,325	1,000	2,000	780	4,000	0	0
Total	5,739	3,136	5,830	2,787	13,963	280,000	3

Objective 3: Provision of families with seeds (maize, sorghum, cow peas, garden peas, green grams) and farm implements, and provision of 600 MT of various assorted categories of seeds (all certified) and fertilizers.

Progress/achievements: No details are available at this moment for the period covered by this report. However, it is anticipated that this activity will be implemented at a larger scale – at a later stage of the operation – once the immediate relief needs have been met, and the focus turns to support longer-term livelihood projects.

Water and Sanitation

Objective 4: Help the target communities regain sustained access to water and sanitation systems.

Progress/achievements: 3 bladder tanks have been so far been sent to Kilifi District.

Health

Objective 5: Significantly reduce mortality and morbidity in vulnerable populations affected by floods.

Progress/achievements: The National society is working closely with the Ministry of Health (MoH) to monitor the health situation, including the risks of cholera outbreak and malaria. The KRCS has also supplied Kisumu and Garissa districts with chlorine tablets to be used in preventing water contamination. Furthermore, the NS has sent out a health team to assess the health situation in the affected areas since there are fears of disease outbreaks.

Objective 6: Offer logistical support in terms of primary and secondary transportation of food and non-food relief, as well as stock relief items in warehouses in the field for easy access by beneficiaries at all times.

Progress/achievements: A Memorandum of Understanding (MoU) between the KRCS, the Norwegian Red Cross and the Federation was signed to enable continued assistance of the Transport Support Unit (TSU) in terms of water trucking and distribution of relief items to the affected regions. This project has been ongoing despite some difficulties in accessing remote areas. In Budalangi, the KRCS organized relief distribution for 400 families. The NS has been very active in the evacuation process in Garsen and has provided relief items.

Objective 7: Facilitation of assessment, monitoring and evaluation of floods operation.

Progress/achievements: The KRCS, together with partners, conducted an aerial assessment in Malindi, Kilifi, Tana River and Ijaara districts to determine the extent of the damage to infrastructure and livelihoods. Another assessment has been conducted involving the KRCS secretary general, government officials and UN agencies; the assessment team visited the North Eastern and Eastern provinces.

Kenya: Floods; Preliminary Emergency Appeal no. MDRKE003; Operations Update no. 1

Logistical support

While the Kenyan military and Ministry of Public Works have been repairing roads in the coastal areas – also hard hit by incessant rains – most of the roads in the North Eastern Province remain impassable. Some of the KRCS's six-wheel-drive trucks, brought to Kenya from Norway early this year to support a drought relief operation in the same areas now suffering from floods, have been stuck in mud for several days, unable to move much-needed supplies to people left with nothing at all.

Given the inaccessibility of the affected areas and general logistics and transport constraints, air operations (air ops) are a vital strategic component of the operation, not least to carry out assessments, but also to deliver the critical relief items to stranded or cut-off communities. The KRCS, as a lead agency in the flood assistance and response operation, has been instrumental in making arrangements for air assets in the form of helicopter and fixed wing aircraft. This is expected to increase in the coming days, liaising with the Government working through the KRCS to mount an effective response.

Table 4: Relief items resourced by the Federation (in the pipeline), including additional needs

Item	In pipeline	Total needs	Percentage (%) of needs covered
Jerry cans (20 litre)	10,000	190,000	5
Soap (pieces)	0	100,000	0
Blankets (pieces)	20,000	80,000	20
Tarpaulins	10,000	40,000	20
Mosquito nets	40,000	60,000	40
Kitchen sets	4,000	46,000	8

The logistics mobilization table is available on the Federation's Disaster management Information System (DMIS) at page: <https://www-secure.ifrc.org/dmis/admin/logistics/docs/MDRKE003MT231106b.doc>

Federation Coordination

The Federation supported the extension of the TSU Memorandum of Understanding between the KRCS and the Norwegian Red Cross and sent an official communication to the KRCS Secretary General to that effect.

The KRCS – in partnership with the government local administration and military teams, municipal councils, county councils, Arid Land Management Project (ARLMP), Danish International Development Agency (Danida), MoH, World Health Organization (WHO), United Nations Children's Fund (UNICEF) and The Young Muslims Association – has been able to assist by setting up of four internally displaced persons (IDP) camps at Ziwani, Hyuga Girls School, NEP Technical Institute, Young Muslims Association and Farmers Training Centre (FTC) in North Eastern Province. The NS has also installed portable toilets. CARE Kenya is involved in water provision and storage in Garissa.

The Government of Kenya has provided 300 bags of rice, 150 cartons of cooking oil and 50 bags of beans to the communities affected by the floods. It has also carried out a medical camp, seconded two trucks to the KRCS (for logistical support), commissioned a rapid disaster onset assessment team and provided a chopper for rescue and assessment. 148 persons have been rescued by this initiative. The Garissa County Council has agreed to secure an evacuation site for IDPs should the Kiambere Dam overflow and cause massive destruction or displacement of people.

National Society Capacity Building

The KRCS has built up its preparedness and response capacity from challenges and experiences of past disaster operations. This floods operation will reinforce the capacities of its personnel in the affected branches. Skills in relief distributions and the awareness of the need for coordinated disaster preparedness will be improved. In addition, the national society will organize training for volunteers and other key personnel. Where capacity gaps exist, the national society may seek technical assistance from the International Federation.

Red Cross and Red Crescent Movement - Principles and initiatives

All mitigation programmes are designed with sufficient consultation at community level, using and enhancing community structures where possible, and ensuring an equal representation of men and women at decision-making bodies.

Kenya: Floods; Preliminary Emergency Appeal no. MDRKE003; Operations Update no. 1

Communications – Advocacy and Public Information

The media is to be engaged more to publicize the KRCS intervention. The NS also released hotline mobile numbers for those who would like to donate to assist the affected people.

For further information specifically related to this operation please contact:

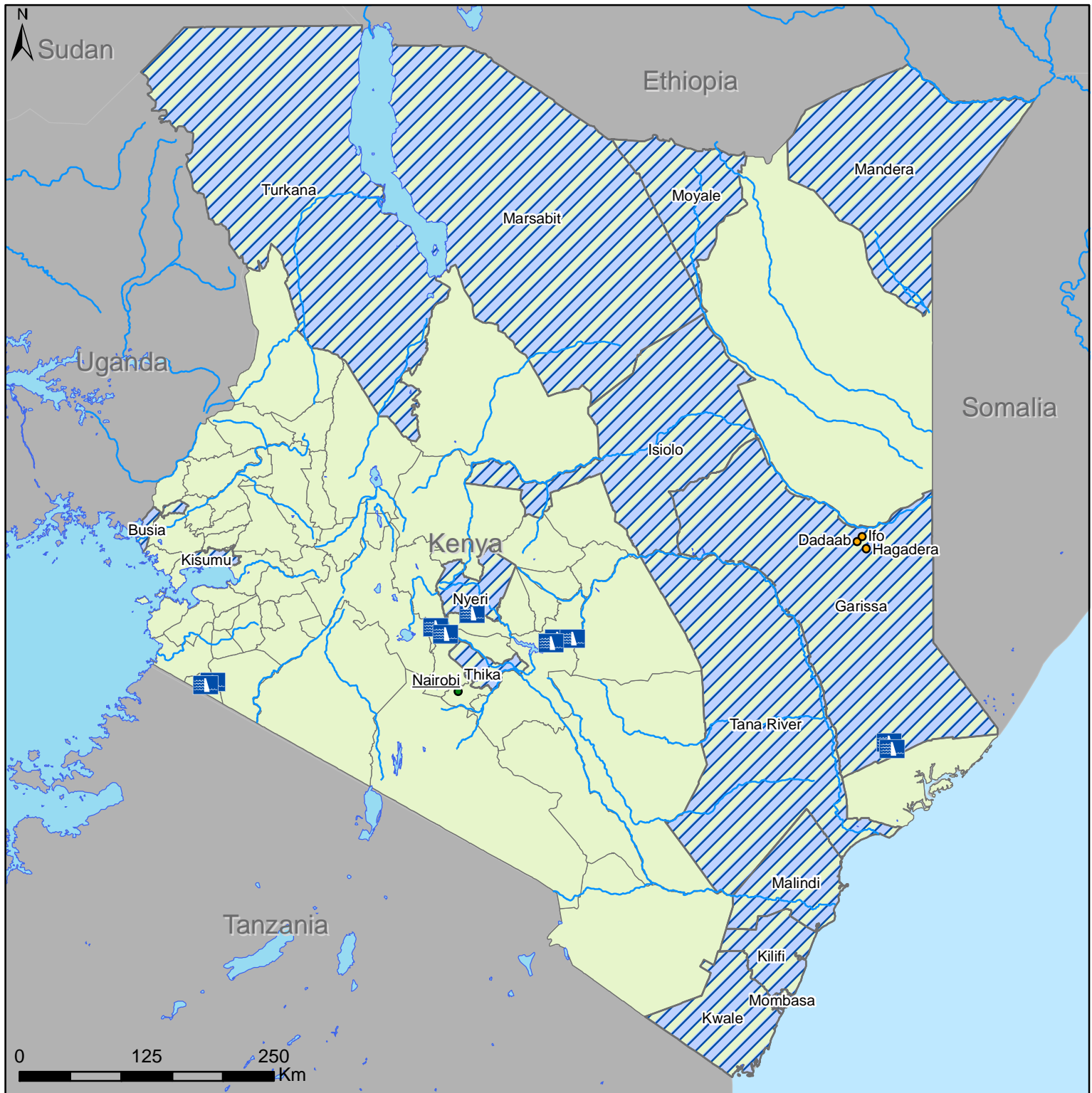
- **In Kenya:** Abbas Gullet, Secretary General, Kenya Red Cross Society, Nairobi; Email: gullet.abbas@kenyaredcross.org; Phone + 254.20.30.35.93; Fax +254.20.60.35.89
- **In Kenya:** Esther Okwanga, Federation Head of East Africa Sub-Regional Office, Nairobi; Email: esther.okwanga@ifrc.org; Phone +254.20.283.50.00; Fax +254.20.271.27.77
- **In Kenya:** Per Jensnäs, Federation Head of Eastern Africa Regional Delegation, Nairobi; Email: per.jensnaes@ifrc.org; Phone +254.20.283.51.24
- **In Geneva:** Amna Al Ahmar, Federation Regional Officer for Eastern Africa, Africa Dept.; Email: amna.alahmar@ifrc.org; Phone + 41.22.730.44.27; Fax + 41.22.733.03.95




All International Federation assistance seeks to adhere to the [Code of Conduct](#) and is committed to the [Humanitarian Charter and Minimum Standards in Disaster Response](#) in delivering assistance to the most vulnerable. For support to or for further information concerning Federation programmes or operations in this or other countries, or for a full description of the national society profile, please access the Federation's website at <http://www.ifrc.org>

[Map below; click here to return to the title page.](#)



Kenya: Floods



-  Main dams
-  Affected districts
-  Refugees camps