

# DREF operation



International Federation  
of Red Cross and Red Crescent Societies

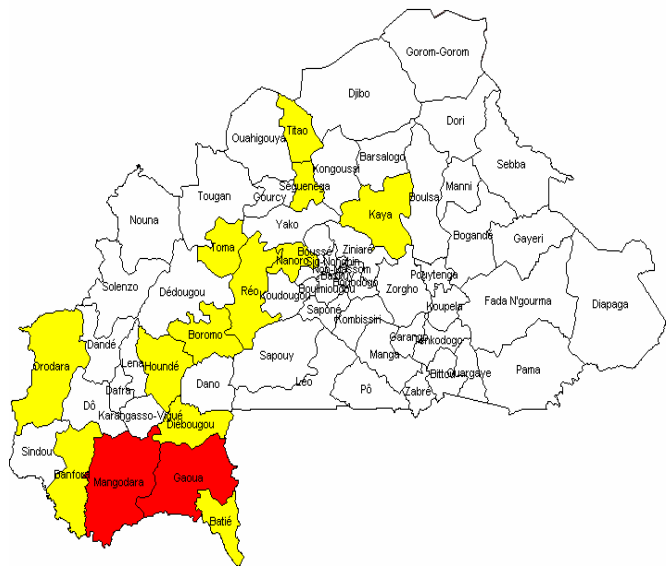
## Burkina Faso: Meningitis

DREF operation n° MDRBF005  
GLIDE n° EP-2008-000029-  
BFA  
28 February, 2008

The International Federation's Disaster Relief Emergency Fund (DREF) is a source of un-earmarked money created by the Federation in 1985 to ensure that immediate financial support is available for Red Cross and Red Crescent response to emergencies. The DREF is a vital part of the International Federation's disaster response system and increases the ability of national societies to respond to disasters.

**CHF 95,000 (USD 89,338 or EUR 59,229) has been allocated from the Federation's Disaster Relief Emergency Fund (DREF) to support the national society in delivering immediate assistance to some 2,000,000 beneficiaries. Un-earmarked funds to repay DREF are encouraged.**

**Summary:** Responding to a meningitis outbreak in Burkina Faso and concerns that the disease may spread further, the Burkinabe Red Cross Society has mobilized trained volunteers in order to undertake awareness-raising and sensitization activities in the affected community about preventive measures, the importance of seeking early treatment, and to assist the Ministry of Health (MoH) in planned vaccination campaigns. The strategy of the national society is to work closely with the MoH and assist through targeting, supporting and supervising 1,000 volunteers in the affected districts for the duration of the campaign through social mobilization, community training, and capacity building activities.



This operation is expected to be implemented over 3 months, and will therefore be completed by 26 May, 2008; a Final Report will be made available three months after the end of the operation (by 26 August, 2008).

[<click here for the DREF budget, or here for contact details>](#)

## The situation

In Burkina Faso a meningitis epidemic has led to nearly 2,000 cases and over 250 deaths in the first seven weeks of the year with a lethality rate of more than 13% according to the MoH and World Health Organization (WHO). So far 14 health districts are the most concerned and are either in the epidemic

phase (Gaoua and Mangodar) or alert phase (Banfora, Batié, Bromo, Diébougou, Houndé, Kaya, Nanoro, Orodara, Réo, Séguénéga, Titao, Toma).

The Ministry of Health (MoH) has declared the meningitis outbreak in these districts where the number of cases exceeded the epidemic threshold; vaccination campaigns in these two districts have already taken place. In the other districts, the number of cases has exceeded the alert threshold but not yet the epidemic threshold, thus intense surveillance is implemented.

Though the number of cases this year are slightly lower than they were at the same period in 2006 and 2007, the risk for a high level epidemic as announced by the WHO in October 2007 is still present.

## Coordination and partnerships

All partner activities involved in the response to the meningitis outbreaks are coordinated by the MoH and the national society takes part in all relevant coordination meetings. The national society is considered a key partner of the government in all activities concerning social mobilization and community information.

## Red Cross and Red Crescent action

During the 2007 meningitis epidemic, 800 volunteers were trained on meningitis response activities through DREF funding. Given the alert for a possible serious epidemic season in 2008, launched by the WHO in October 2007, the Burkinabe Red Cross Society had received financial support (CHF 75,000) through a Federation meningitis preparedness and prevention project. These funds allowed the national society to train an additional 825 volunteers in December 2007 and January 2008 to be better placed to respond to a possible outbreak. Around 70% of funds sought through this project were raised through support from the Finnish, Swedish and Norwegian Red Cross as well as DFID and allocated to several national societies in West Africa. The funds received have enabled the national society to respond as well to the first cases of meningitis through increased social mobilization and participation in the vaccination campaigns in the two concerned districts in close collaboration with the government.

## The needs

Given the threat of the disease to spread further, there is an urgent need to mobilize trained volunteers in order to raise awareness in the community about preventive measures, the importance of seeking early treatment and to assist the MoH in planned vaccination campaigns. As the funds received in 2007 and early 2008 for preparedness and prevention activities have been fully utilized by now, the national society is in need of additional financial resources to mobilize human resources for social mobilization activities.

## The proposed operation

The Red Cross action will not only focus on the districts already directly affected by the outbreak but activities in neighboring districts will be carried out simultaneously to avoid further spread of the outbreak as much as possible through community preparedness and information activities

### Emergency health

**Objective:** The Red Cross will contribute to the control of the epidemic in affected health districts during the next three months.

#### Activities planned:

- Mobilization of 1,000 volunteers and 45 supervisor/team leaders to:
  - Deliver key-messages on health and hygiene through door-to-door sensitization;
  - Organize community mobilization and sensitization activities through focus group discussions;
- Broadcasting campaigns through rural radios;
- Increase preparedness activities in districts on alert and the neighbouring districts

#### Expected results:

- 1,000 volunteers and 45 supervisor/team leaders have been mobilized;
- 2,000,000 people are reached through sensitization activities.

## How we work

*All International Federation assistance seeks to adhere to the [Code of Conduct for the International Red Cross and Red Crescent Movement and Non-Governmental Organizations \(NGO's\) in Disaster Relief](#) and is committed to the [Humanitarian Charter and Minimum Standards in Disaster Response \(Sphere\)](#) in delivering assistance to the most vulnerable.*

The International Federation's activities are aligned with its Global Agenda, which sets out four broad goals to meet the Federation's mission to "improve the lives of vulnerable people by mobilizing the power of humanity".

### Global Agenda Goals:

- Reduce the numbers of deaths, injuries and impact from disasters.
- Reduce the number of deaths, illnesses and impact from diseases and public health emergencies.
- Increase local community, civil society and Red Cross Red Crescent capacity to address the most urgent situations of vulnerability.
- Reduce intolerance, discrimination and social exclusion and promote respect for diversity and human dignity.

## Contact information

### For further information specifically related to this operation please contact:

- **In Burkina Faso:** Bana Ouandaogo, President, Burkinabe Red Cross Society, Ouagadougou; Email: [croixrouge.bf@fasonet.bf](mailto:croixrouge.bf@fasonet.bf); Phone: +226 50 361 340; Fax +226 50 363 121
- **In Dakar:** Alasan Senghore, Head of Zone, West and Central Africa Zone, phone:+221 869 36 40, Fax:+221 33 820 25 34, email: [alasan.senghore@ifrc.org](mailto:alasan.senghore@ifrc.org) ; Hans Ebbing, Health Coordinator, West and Central Africa Zone, email: [hans.ebbing@ifrc.org](mailto:hans.ebbing@ifrc.org)
- **In Geneva:** Niels Scott, Federation Operations Coordinator (Africa); email: [niels.scott@ifrc.org](mailto:niels.scott@ifrc.org); telephone +41 22 730 4527; fax + 41 22 733 0395

[<DREF budget below; click here to return to the title page>](#)

BUDGET SUMMARY	
TYPE	VALUE IN CHF
<b>BENEFICIARIES NEEDS</b>	
Teaching Materials	
<b>TOTAL BENEFICIARIES NEEDS</b>	<b>0</b>
<b>PROGRAMME SUPPORT</b>	
Programme support (6,5% of total)	6,153
<b>TRANSPORT &amp; STORAGE</b>	
Transport & Vehicles	2,850
<b>PERSONNEL</b>	
National staff	70,656
<b>SENSITISATION MATERIALS</b>	
Workshop & Training	2,500
<b>ADMINISTRATIVE &amp; GENERAL SERVICES</b>	

Travel	3,000
Information	2,500
Other General Expenses	625
Stationery	
Communication	750
Professional Fees	5,625
<b>TOTAL OPERATIONAL NEEDS</b>	<b>94,659</b>
<b>TOTAL APPEAL CASH, KIND, SERVICES</b>	<b>94,659</b>