

DREF operation



International Federation
of Red Cross and Red Crescent Societies

Burundi: Floods

DREF operation n° MDRBI003

8 October 2008

The International Federation's Disaster Relief Emergency Fund (DREF) is a source of un-earmarked money created by the Federation in 1985 to ensure that immediate financial support is available for Red Cross and Red Crescent response to emergencies. The DREF is a vital part of the International Federation's disaster response system and increases the ability of national societies to respond to disasters.

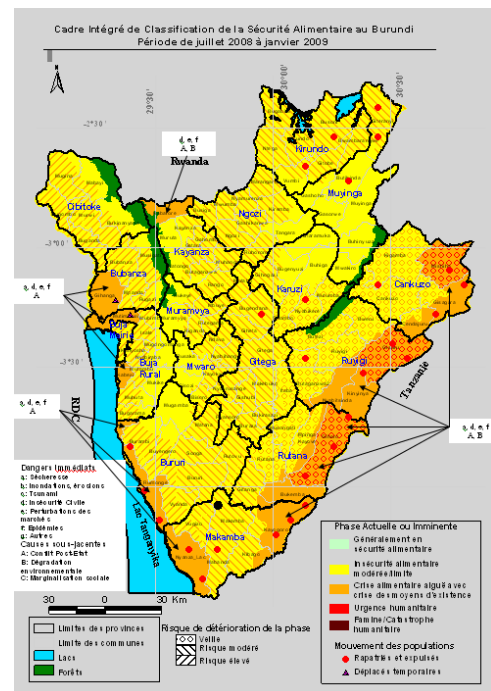
CHF 146,222 (USD 139,259 or EUR 89,432) has been allocated from the Federation's Disaster Relief Emergency Fund (DREF) to support the National Society in delivering immediate assistance to some 554 Families who are affected by the recent heavy rain and flooding. Unearmarked funds to repay DREF are encouraged.

Summary: Heavy rains fell in Burundi from 20 October 2008 and subsequent flooding affected several areas of the country. The worst affected were Bujumbura Rural, Cibitoke and Ngozi Provinces where an estimated 554 families had houses damaged and crops destroyed by flood waters.

The Burundi Red Cross (BRC) carried out an assessment with the Government and other humanitarian actors and is already responding with immediate relief items to the worst affected. The proposed programme for relief and early recovery includes distribution of basic shelter and non-food items as well as provision of mosquito nets for the most vulnerable people and distribution of seeds and seedling to enable families to replant crops during the current rains.

This operation is expected to be implemented over 3 months, and will therefore be completed by 10 January 2009; a Final Report will be made available three months after the end of the operation (by 10 April 2009).

[<click here for the DREF budget or here for contact details>](#)



Map of Burundi showing current food security situation

The situation

Since mid September 2008, heavy rains followed by floods in several provinces have resulted in destruction of food crops and houses in many parts of Burundi. The provinces most affected were: Bujumbura Rural, Cibitoke and Ngozi Provinces. Most of the affected households have lost all their crops. This has increased their vulnerability to food insecurity.

A joint mission of UN agencies with other non governmental organizations (NGOs) such as CARE International and Civil Protection was conducted in the commune of Ngozi province in Nyamurenza to determine the damage caused by floods. They recommended that a team of agricultural experts do a

detailed assessment to determine the longer term recovery actions. It was recommended that vegetable seeds be immediately distributed to households affected, particularly in the plains of “Ku Murago”.

At the same time the Burundi Red Cross has been working with provincial secretaries, team leaders, emergency relief volunteers in collaboration with local administrators and heads of communal areas. The objective is to evaluate the damage caused by floods and to provide humanitarian assistance to households most affected by the disaster.

The preliminary assessments indicate that the most affected households have effectively lost all their crops from this short rainy season (September to December). At the same time a number of families have been displaced from their homes by floods and are temporarily being housed by neighbours and relatives. The goal of this intervention is therefore to meet the most immediate needs in terms of non-food items (NFI) and seeds consisting of beans, sweet potato vines, cassava cuttings (mosaic resistant) and vegetable seeds for the most vulnerable households in three provinces most affected.

Coordination and partnerships

The coordination of the operation on the ground will be done through collaboration between the BRC branches and their volunteers, formed from emergency response teams. Partner National Societies (PNSs) present in Burundi will also assist in the management of the relief operation.

All Government and non-government partners intervening in the three provinces will be involved in the coordination of the operation during the next one month. World Food Programme (WFP) and BRC have signed a memorandum of understanding (MoU) to assist each other with the distribution of food rations to the affected households. This is intended to ensure food availability in the households to protect the seeds until the next harvest, between January and February 2009.

The DREF is intended to assist the BRC to make a rapid response and the Secretary General of Burundi RC will be in regular contact with the Disaster Management Coordinator in the Zone office to ensure the full involvement of the Federation in the operation.

Red Cross and Red Crescent action

The department in collaboration with disaster management branches of the affected provinces have mobilized their emergency response teams for a rapid assessment of the situation in all areas. This will produce a more accurate picture of the most urgent needs and the households to be targeted for assistance.

The needs

The initial assessments of the emergency response teams have produced the following analysis of households affected (see table 1 below).

Table 1: Analysis of the households affected

Commune	Affected households	Banana and Cassava crops destroyed (number of households)	Infrastructure damaged
BUJUMBURA RURAL PROVINCE			
MUTAMBU	41	117	13 schools
KABEZI	52	83	16 schools (including primary schools)
MUHUTA	73	151	29 schools
NYABIRABA	17	42	
TOTAL	183	393	58
NGOZI PROVINCE (beans, maize, haricot beans, potatoes and maize)			
NYAMURENZA	173	73 ha (Maize)	Local community building

NGOZI -MIVO	5	Superficial damage not measured	6 bridges
CIBITOKE PROVINCE, Murwi Commune			
Zone Buhindo	193	1000 ha	

Latest information suggests that additional households in Kayanza Province were affected by heavy rain and hail from 29 September to 5 October. A total of 20 households were most affected with considerable crop damage. Assessment is ongoing.

The most urgent needs are therefore:

- Rebuilding of houses - this need is expected to be addressed by the Government of Burundi and BRC is advocating for quick action from local authorities.
- The distribution of NFIs (including tarpaulins, blankets, soap and hoes) and mosquito nets to pregnant women and lactating women.
- The distribution of seeds and seedlings, specifically vegetable seeds, cuttings of resistant cassava mosaic, sweet potatoes starters, beans and banana suckers.
- People (mostly women) who are temporarily sharing housing with neighbours and friends are in need of blankets and wraps (multi purpose traditional clothes) to protect their privacy in crowded living conditions.

Beneficiary selection

From the preliminary analysis above the Burundi Red Cross has identified 554 households who are in dire urgent need of assistance. Ongoing detailed assessments of house and crop damage will provide accurate figures.

The proposed operation

Relief distributions (food and basic non-food items)

Objective: Contribute to the provision of the immediate needs of 554 affected households through distribution of NFIs and temporary shelter items.

Activities planned:

- Identification and targeting of the most vulnerable households.
- Purchase and transport of NFIs to the three affected provinces.
- Mobilization and training of volunteers on relief distribution procedures.
- Organization of the distribution of relief items to the targeted beneficiaries.

Expected results: 554 most affected households in Bujumbura Rural, Cibitoke and Ngozi Provinces are assisted to regain their most essential non-food items.

Emergency health

Objective: Contributing to the promotion of the use of insecticide treated bed nets (ITNs) for the prevention of malaria amongst vulnerable pregnant women and children under five.

Activities planned

- Identification of vulnerable groups and target beneficiaries through the volunteers in the three branches.
- Organization of awareness raising sessions on the importance of mosquito nets for the prevention of malaria in collaboration with the Provincial Health Authorities.
- Purchase and transportation of nets to affected provinces.
- Organization of the distribution of nets to target beneficiaries.
- Follow up and supervision on use of nets at household level.

Expected Result: The most vulnerable group, consisting of children under five and pregnant or lactating women use ITNs for prevention of malaria.

Emergency food security

Objective: Contribute to the re-establishment of livelihoods of the most affected households through distribution of beans, maize, potato, cassava and vegetables seeds for planting and harvest in the first part of the 2009 season (January to February 2009).

Activities

- Identification and targeting of the most vulnerable households.
- Purchase and transportation of relevant seeds to the affected provinces.
- Mobilization and training of volunteers on distribution and proper planting techniques for various seeds and seedlings.
- Organization of seed and seedling distribution.

Expected Result: The beneficiaries of the intervention meet their needs to prepare for the next harvest season (January to February 2009).

How we work

All International Federation assistance seeks to adhere to the [Code of Conduct for the International Red Cross and Red Crescent Movement and Non-Governmental Organizations \(NGO's\) in Disaster Relief](#) and is committed to the [Humanitarian Charter and Minimum Standards in Disaster Response \(Sphere\)](#) in delivering assistance to the most vulnerable.

The International Federation's activities are aligned with its Global Agenda, which sets out four broad goals to meet the Federation's mission to "improve the lives of vulnerable people by mobilizing the power of humanity".

Global Agenda Goals:

- Reduce the numbers of deaths, injuries and impact from disasters.
- Reduce the number of deaths, illnesses and impact from diseases and public health emergencies.
- Increase local community, civil society and Red Cross Red Crescent capacity to address the most urgent situations of vulnerability.
- Reduce intolerance, discrimination and social exclusion and promote respect for diversity and human dignity.

Contact information

For further information specifically related to this operation please contact:

- **In Burundi:** Katiyunguruza Anselme, Secretary General, Burundi Red Cross, Bujumbura; email: katiyunguruza.anselme@croixrouge.bi; telephone + 257.21.62.46; fax + 257.21.11.01
- **In Kenya:** Nancy Balfour, Disaster Management Coordinator Eastern Africa Zone, Nairobi; email: nancy.balfour@ifrc.org; telephone: +254.20.283.5208; fax +254.20.271.2777
- **In Kenya:** Dr. Asha Mohammed, Federation Eastern Africa Zone, Nairobi, phone: +54.20.283.51.24; Fax: + 254.20.271.27.77; email: asha.mohammed@ifrc.org
- **In Geneva:** John Roche, Federation Operations Coordinator (Eastern and Southern Africa), email: john.roche@ifrc.org; phone + 41.22.730.4400

[<DREF budget below; click here to return to the title page>](#)

DREF OPERATION BUDGET SUMMARY

MDRBI003 Burundi: Floods

BUDGET CHF

RELIEF NEEDS

500	Shelter	39,571
505	Construction materials	
510	Clothing and textiles	24,118
520	Food	
523	Seeds and plants	26,117
530	Water and sanitation	7,914
540	Medical and First Aid	1,856
550	Teaching materials	
560	Utensils and tools	15,804
570	Other Supplies and services	

Total Relief Needs 115,381

CAPITAL EQUIPMENT

580	Land and buildings	
581	Vehicles purchase	
582	Computers and telecom equipment	
584	Office/household furniture and equipment.	
587	Medical equipment	
589	Other machinery and equipment	

TRANSPORT, STORAGE and VEHICLES

590	Storage - warehouse	
592	Distribution and monitoring	16,473
593	Transport and vehicles costs	

PERSONNEL

600	International Staff	
640	Regionally deployed staff	
661	National staff	536
662	National Society volunteers	1,250
670	Consultants	

WORKSHOPS and TRAINING

680	Workshops and training	
-----	------------------------	--

GENERAL EXPENSES

700	Travel	
710	Information and Public Relations	3,079
730	Office running costs	
740	Communication costs	
750	Professional fees	
760	Financial charges	
790	Other general expenses	

SERVICE FEES

Service Fees

PROGRAMME SUPPORT

599	Programme Support - PSR	9,504
-----	-------------------------	-------

Total Operational Needs 30,842

DREF ALLOCATION 146,222
