

DREF operation



International Federation
of Red Cross and Red Crescent Societies

Benin: Cholera

DREF operation n° MDRBJ004
GLIDE n° EP-2008-000149-BEN
9 October 2008

The International Federation's Disaster Relief Emergency Fund (DREF) is a source of un-earmarked money created by the Federation in 1985 to ensure that immediate financial support is available for Red Cross and Red Crescent response to emergencies. The DREF is a vital part of the International Federation's disaster response system and increases the ability of national societies to respond to disasters.

CHF 28,500 (USD 25,307 or EUR 18,381) has been allocated from the Federation's Disaster Relief Emergency Fund (DREF) to support the Red Cross of Benin in delivering immediate assistance to some 10,000 beneficiaries (2,000 families). Un-earmarked funds to repay DREF are encouraged.

Summary: Another cholera outbreak has been reported in the northern part of Benin. According to the Red Cross, four districts have been affected with over 600 cases reported, though with no deaths. As cases are increasing, the Red Cross is mobilizing its volunteers and collaborating with government agencies to assist affected communities in curtailing the spread of the disease. The Red Cross is planning to scale up its intervention through the training of volunteers to carry out sensitization activities and messages of good hygiene practices to the affected population. The action is aimed at reducing the suffering of the victims, their families and the communities at large.

This operation is expected to be implemented over 2 months, and will therefore be completed by December, 2008; a Final Report will be made available three months after the end of the operation (by March, 2009).

[<click here to view the budget, or here for contact details>](#)

The situation

Since the last week of September 2008, cases of cholera have been reported in Malanville and Karimana in the northern part of Benin. According to the Red Cross of Benin, about 90 cases were referred to health centres in the two districts. By 2 October 2008, the epidemic has spread to other northern districts of Djougou and Bassilla with over 600 cases reported in the affected communities, according to the Red Cross. No deaths have been reported. Reported cases are increasing, and if the epidemic is not quickly controlled it could potentially spread to other neighbouring communities. The district of Karimana is recording the highest number of cases thus far. Health officials in the locality have been deployed in the district to give medical assistance to affected persons. The Red Cross volunteers deployed in the affected communities could only carry out sensitization on good hygiene practice in a few accessible areas.

The poor hygiene habits of the population, lack of sanitation facilities, heavy rains in the country as well as contaminated sources of drinking water in the communities make the inhabitants more vulnerable to the epidemic. According to the local branch of the Red Cross, community leaders in the affected areas are calling on government and other NGO to come to their assistance in reducing the spread of the disease.

A similar outbreak was reported during the month of August 2008 in Cotonou, the commercial capital of Benin. The Red Cross of Benin with support from the Federation mobilized, trained and deployed its team of volunteers to the affected communities. The volunteers have been carrying out sensitization activities in the affected areas in Cotonou. Two volunteers' cholera kits were procured for the first outbreak in Cotonou, however only one was used. With this new outbreak in the north, the second kit will be transported to the north of the country for usage.

Coordination and partnerships

The Red Cross of Benin through its local branch is collaborating with local authorities in organizing sensitization sessions in the communities. The Red Cross has also been participating in coordination meetings organized by the local government authority. The aim of the meetings is to harmonize all efforts towards fighting the epidemic in order to positively impact the affected population. With support from the West Coast regional office of the Federation, the Red Cross Society of Benin will further strengthen collaboration with the Ministry of Health and the local authority to reducing the suffering of the affected households and prevent further spread.

Red Cross and Red Crescent action

With the increase in the number of reported cases, the local branch of Red Cross of Benin is working with local government authorities to sensitize the affected communities. The Red Cross volunteers have also been collaborating with the Ministry of Health to carry out disinfection activities in the communities. The National Society hopes to intensify its humanitarian activities by mobilizing and training its volunteers in the affected communities. The volunteers will be equipped and deployed to carry out house-to-house sensitization activities on good hygiene practices, symptoms and steps to take if a case is detected as well as early referral to health facilities.

The International Federation, through its delegation in Lagos, Nigeria, continues to work closely with the National Society by supporting its staff and volunteers in all Red Cross activities and ensuring that management as well as operational issues are directed and implemented within the principles and core values of the Red Cross Movement to reach the needs of the most vulnerable.

The needs

Beneficiary selection: The beneficiaries of this operation are 2,000 families (10,000 people). Although, 600 people are affected so far, the target beneficiary numbers are increased so as to reach the most vulnerable people in and around the affected communities. The communities at large as well as Red Cross volunteers and staff shall benefit from the operation through health education and training in the prevention of epidemics. Red Cross volunteers from 3 local branches are being selected for the operation because of their knowledge of the culture and community traditions. This will enable them to effectively penetrate the community during the exercise.

The needs of the affected people are basically hygiene promotion and health education as well as water purification tablets in the communities. The National Society is also planning to carry out a sensitization campaign in the affected communities. A volunteer cholera kit is available for use in the north of the country.

The proposed operation

Hygiene promotion

Objective: To complement government efforts in the prevention and control of cholera by reducing morbidity like watery diarrhoea epidemic, and avoiding mortality in the most affected communities in the northern part of Benin.

Activities planned	Expected outcomes
<ul style="list-style-type: none">• Participate actively in coordination meetings at the national and local levels in order to obtain relevant statistics;• Train 100 Red Cross volunteers from 3 local branches as well as coaches to be deployed to support the activities planned;• Distribute volunteer cholera kits to volunteers;• In collaboration with the MoH and sanitation service, WHO, UNICEF, MSF and other actors in the cholera control efforts to engage in community cholera activities such	<ul style="list-style-type: none">• All Red Cross activities are implemented in a coordinated way thus avoiding duplication of services with other actors. Red Cross experience is also shared with others at coordination meetings and during surveillance, reporting, response and advocacy activities at the national and district levels;• 100 well trained and motivated volunteers have been able to reach the most affected people and have provided life saving support to those falling sick from the epidemic;

<p>as surveillance, referrals, sensitization, education and distribution of hygiene items;</p> <ul style="list-style-type: none"> • Deploy a regional health team from West Coast regional office to support the Red Cross of Benin in the management of the epidemic; • Provide the volunteers and team with welfare, logistics support and protective materials as detailed in the attached budget; • Promote and respect the Fundamental Principles of the Red Cross/Red Crescent Movement. 	<ul style="list-style-type: none"> • One volunteers' cholera kit and other disaster response materials are supplied to the volunteers; • Hygiene and health education, early case detection and referral as well as sensitizations have been useful in reducing the number of victims; • The regional resource team from the West Coast regional office will have increased the capacity of the Red Cross of Benin and the delegation by providing technical support and advice; • Volunteers have been provided with welfare, insurance, protective materials and logistics assistance.
---	--

How we work

All International Federation assistance seeks to adhere to the [Code of Conduct for the International Red Cross and Red Crescent Movement and Non-Governmental Organizations \(NGO's\) in Disaster Relief](#) and is committed to the [Humanitarian Charter and Minimum Standards in Disaster Response \(Sphere\)](#) in delivering assistance to the most vulnerable.

The International Federation's activities are aligned with its Global Agenda, which sets out four broad goals to meet the Federation's mission to "improve the lives of vulnerable people by mobilizing the power of humanity".

Global Agenda Goals:

- Reduce the numbers of deaths, injuries and impact from disasters.
- Reduce the number of deaths, illnesses and impact from diseases and public health emergencies.
- Increase local community, civil society and Red Cross Red Crescent capacity to address the most urgent situations of vulnerability.
- Reduce intolerance, discrimination and social exclusion and promote respect for diversity and human dignity.

Contact information

For further information specifically related to this operation please contact:

- **In Benin:** Hubert Chabi, Executive Secretary, Red Cross Society of Benin, Porto-Novo; phone: +229 97277975; email: chabihubert@yahoo.fr
- **In Nigeria:** Chinyere Emeka-Anuna, Acting Head of Federation West Coast Regional Office, Lagos; phone: +234 12. 695. 228; Fax: +234. 12. 695.229; email: chinyere.emekaanuna@ifrc.org
- **In Dakar:** Alasan Senghore, Head of Zone, West and Central Africa Zone, phone:+221 869 36 40, Fax:+221 33 820 25 34, email: alasan.senghore@ifrc.org ; Youcef Ait-Chellouche Disaster Management Coordinator, West and Central Africa Zone, email: youcef.aitchellouche@ifrc.org ; Hans Ebbing, Health Coordinator, West and Central Africa Zone, email: hans.ebbing@ifrc.org

[<DREF budget and map below; click here to return to the title page>](#)

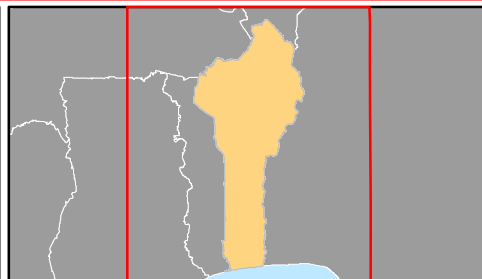
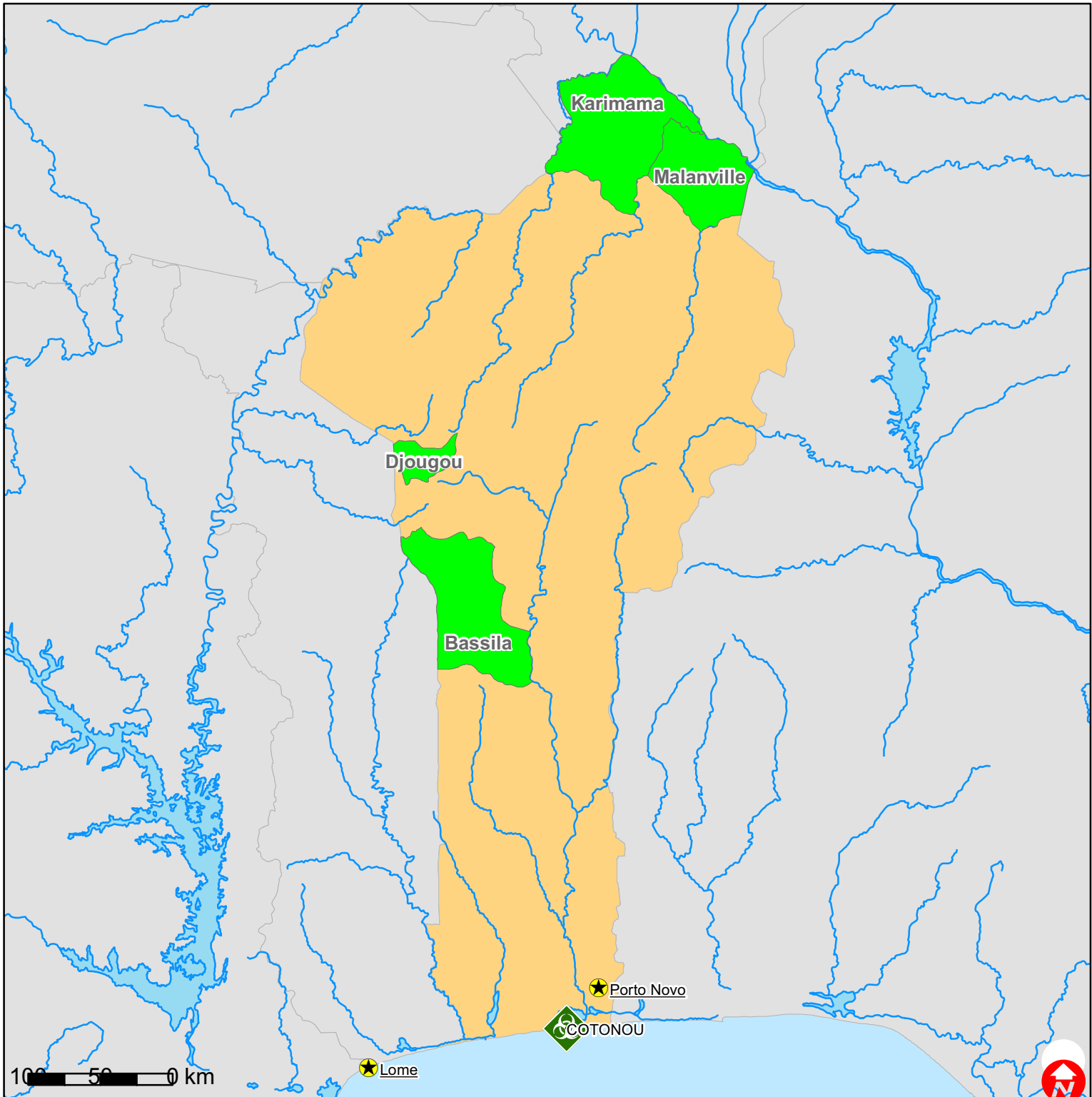
BUDGET SUMMARY




TYPE	VALUE IN CHF
BENEFICIARIES NEEDS	
Sub total medical and first aid	1,000
Sub total teaching and sensitisation materials	3,760

Subtotal other supplies for beneficiaries	280
<u>TOTAL BENEFICIARIES NEEDS</u>	5,040
<u>PROGRAMME SUPPORT</u>	
Programme support (7% of total)	1,984
Subtotal Transport and Maintenance	8,500
<u>PERSONNEL</u>	
Subtotal Personnel	10,400
Subtotal Training	1,075
<u>ADMINISTRATIVE & GENERAL SERVICES</u>	
Subtotal other general expenses	150
Subtotal Communications	1,200
<u>TOTAL OPERATIONAL NEEDS</u>	<u>23,309</u>
TOTAL APPEAL CASH, KIND, SERVICES	28,349



Benin: Cholera



-  Cholera outbreak in October
-  Cholera outbreak in September
-  Capitals