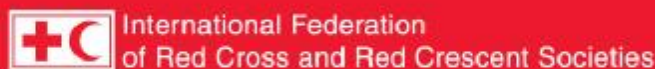


DREF operation



Georgia: Reinforcing Response Capacity

DREF operation n° MDRGE001
27 August, 2008

The International Federation's Disaster Relief Emergency Fund (DREF) is a source of un-earmarked money created by the Federation in 1985 to ensure that immediate financial support is available for Red Cross and Red Crescent response to emergencies. The DREF is a vital part of the International Federation's disaster response system and increases the ability of national societies to respond to disasters.

CHF 233,690 (USD 222,562 or EUR 142,930) has been allocated from the International Federation's Disaster Relief Emergency Fund (DREF) to support the National Society deliver immediate assistance. Unearmarked funds to repay DREF are encouraged.

Summary: By 26 August the fighting that had erupted in South Ossetia, Abkhazia and near the Georgian capital of Tbilisi earlier in the month had ended. However, the conflict has left tens of thousands of people in the region displaced and in need of assistance. In Georgia, these displaced people are the key target group that the Georgian Red



Bread and fresh vegetables are being delivered by Georgian Red Cross volunteers to the displaced communities. Photo: International Federation

Cross is supporting. This DREF will be used to meet immediate funding needs for operations. Special emphasis is put upon disaster management capacity building to support the National Society play a vital role in the current operation and build capacity that can be drawn upon in future.

This operation is expected to be implemented over five months, and will therefore be completed by January 2009; a final report will be made available three months after the end of the operation (by April, 2009).

[<click here for the DREF budget, here for contact details or here to view the map of the affected area>](#)

The situation

After a period of growing tensions, conflict erupted on 7 August in South Ossetia, escalating rapidly around the city of Tskhinvali. The following days saw the conflict widen with fighting also reported in Abkhazia, and air strikes near the Georgian capital of Tbilisi. Tens of thousands of civilians were caught up in the conflict,

fleeing the areas both towards North Ossetia as well as to locations in Georgia and many to the capital, Tbilisi.

Although fighting has ended, tens of thousands of people are displaced and a significant number are dead and wounded. Exact figures are hard to establish due to different estimates from different parties.

In Georgia, the needs are serious and multiple among tens of thousands of internally displaced persons (IDPs) of which an increasing number have been moving towards Tbilisi. There are currently several hundred different IDP locations, most of them public schools and kindergartens in Tbilisi. The government has set up an IDP camp near Tbilisi airport, which can accommodate up to 500 people. It should be noted that the number of different locations makes it difficult for distribution of relief items. In addition, the sustainability of these locations is foreseen only until September/October, at which time schools will resume. Several other IDP camps have been set up mainly located in, or not far from, Tbilisi¹.

Coordination and partnerships

The situation in Georgia has been classified as an international conflict. Thus in accordance with the Seville Agreement and Supplementary Measures, the International Committee of the Red Cross (ICRC) is leading the International Red Cross and Red Crescent Movement's humanitarian response to the armed conflict, in consultation and cooperation with National Societies of the affected countries, other National Societies and the International Federation. Tripartite meetings including ICRC, the International Federation and the Georgia Red Cross Society have been conducted since the beginning of the crisis. The meetings have been extended to include other Movement partners including partner National Societies (PNS) present in Georgia in an effort to strengthen information sharing and follow an agreed path.

The Georgia Red Cross Society has presented a plan of action which outlines its immediate needs and actions. ICRC and the International Federation have been discussing a coordinated, complementary approach to supporting the National Society. Components of the International Federation's support are integrated into the ICRC appeal, and the current DREF operation assists the National Society with immediate operational support. An International Federation emergency appeal is not planned. The regional appeal for 2008-2009-2010 will be revised and published in September to take into account the needs developing due to the situation.

Discussions have focused on ensuring that the National Society is able to play its role as a primary partner and capable of coordinating with ICRC and the International Federation the support from PNSs that are currently working in Georgia, or have expressed a wish to do so. All partners have expressed a cooperative stance and intend to share vital information. The promotion of the National Society through its volunteers is a priority, thus ensuring visibility to the National Society and its volunteers.

Several National Societies have responded directly, delivering relief supplies such as food, water, tents, blankets, clothing, kitchen utensils and beds. The Norwegian Red Cross has provided a field hospital within the framework of the ICRC operation. Other National Societies have also expressed their keen interest in engaging in the operation, therefore making coordination of such support so it responds to the needs that have been identified an urgent priority.

Red Cross and Red Crescent action

The Georgian Red Cross Society has established a task force which aims to develop emergency work plans; facilitate information sharing between the headquarters and the branches; mobilize volunteers; organize blood donations for the wounded; communicate through the National Society's website; organize fund-raising activities; and coordinate and organize humanitarian aid.

A concept paper has been prepared by the task force with the goal that the *Georgia Red Cross Society activities will assist the people who have fled their homes from the affected area through health and social care activities*. This includes first aid, public health and psychological support for 1,000 households as well as the establishment of social centres and social activities for inhabitants of collective centres. Furthermore, the National Society intends to arrange for disaster management training for society staff and volunteers.

¹ United Nations Office for the Coordination of Humanitarian Affairs (OCHA), Situation Report No. 4 on the Situation in Georgia, 18 August 2008. [http://www.reliefweb.int/rw/RWFiles2008.nsf/FilesByRWDocUnidFilename/KLMT-7HN37E-full_report.pdf/\\$File/full_report.pdf](http://www.reliefweb.int/rw/RWFiles2008.nsf/FilesByRWDocUnidFilename/KLMT-7HN37E-full_report.pdf/$File/full_report.pdf)

The National Society has mobilized more than 1,000 volunteers to bring emergency assistance to vulnerable people displaced by the recent fighting. Volunteers in Tbilisi have been divided into groups which perform four types of activities: logistics, communication, needs assessments and fund-raising. Staff and volunteers have been delivering emergency relief and social assistance, as well as organizing blood donations, in affected districts. In addition the National Society has been helping with assessments and fund-raising.

The concept paper foresees capacity building in the areas of branch development, volunteers and systems development. In line with the paper the International Federation intends to provide emergency support through the ICRC appeal in the following key activities:

- Disaster management and organizational development including capacity building.
- Psychological support to IDPs and returning IDPs.
- Ensure visibility of the National Society and its volunteers.

More concretely the International Federation intends to support the National Society in developing its core functions at headquarters level to ensure organized and efficient emergency support to vulnerable groups. This effort includes enhanced communication between the headquarters and branches, mobilization of volunteers, basic disaster management training covering assessment, first aid, relief and distribution as well as monitoring and evaluation.

In addition to immediate and short-term emergency support complementing the efforts of ICRC, the International Federation approach includes longer-term development perspectives within the abovementioned areas. Thus the operation will be aligned with and reinforce the appeal for Southern Caucasus 2008-2009, which is currently being revised for the period up to the end of 2010. The current emergency operation itself will be revised at the end of 2008, with lessons learnt studied before taking the next steps in ensuring the National Society has the support it needs to work with vulnerable people. The International Federation strongly encourages donors to support this work which will contribute to and strengthen much needed disaster management capacity within the Georgia Red Cross Society.

The needs

IDPs and returning IDPs are identified as the most vulnerable and thus the main target group for the activities of the Georgia Red Cross which the International Federation will support. Various estimations of the number of IDPs exist, but exact figures are still hard to establish due to difficulties in obtaining valid information. However, the number of displaced persons adds up to tens of thousands who are now in need of basic relief such as water, food, shelter, hygiene articles, clothing and medical assistance, including psychological support, to mention a few.

Food and other basic supplies are available, but prices have reportedly risen by 25 per cent in recent weeks. At the same time there is a real risk of food shortages in some areas due to the fact that transport routes by road, train, sea and air are still not fully functioning.

The proposed operation

Disaster management capacity building

Objective: The capacity of the National Society to respond effectively to disasters is strengthened.

Activities planned:

- Organize three trainings for National Society staff and volunteers on disaster management and capacity building in emergencies to be facilitated by the regional representation and Zone disaster management and organizational development staff along with regional disaster response team (RDRT) members.
- Create a crisis management team at the National Society's headquarters which would comprise branch and headquarters staff and volunteers and to identify roles and responsibilities of different actors in disaster response.
- Organize trainings in first aid for staff and volunteers.

Psychological support

Objective: The beneficiaries, through established psychosocial programme (PSP), will better cope with the situation and will take an active participation in the relief and recovery efforts.

Activities planned:

- Create a National Society psychosocial team which would consist of experts and Red Cross staff and volunteers with knowledge and experience in PSP in field.
- Organize training of trainers (ToT) for volunteers and staff in PSP.
- Visit the most vulnerable beneficiaries regularly and encourage and offer them support throughout three months period.

Visibility

Objective: Promotion of the activities of the Georgia Red Cross Society and strengthening of their image.

Activities planned:

- Maximize the visibility of the National Society through relief distributions, visits to the beneficiaries, monitoring and evaluation by volunteers of Red Cross branches.
- Procure Red Cross T-shirts, vests, caps, ID-cards for volunteers and staff of the Georgia Red Cross Society.

Budget

| Description | Quantity | Unit | Unit price | Total CHF |
|---|----------|-------|------------|----------------|
| Supplies | | | | 47,500 |
| Clothing and textile | 200 | UNIT | 37.50 | 7,500 |
| Medical and first aid | 200 | UNIT | 100 | 20,000 |
| Teaching materials | 200 | UNIT | 25 | 5,000 |
| Other supplies | 200 | UNIT | 75 | 15,000 |
| Transport & Storage | | | | 21,000 |
| Distribution, monitoring, transport and vehicle cost | 5 | MONTH | 4200.00 | 21,000 |
| Personnel | | | | 65,000 |
| RDRT deployment | 5 | MONTH | 3000.00 | 15,000 |
| National Staff /Administrator and Information officer | 5 | MONTH | 1600.00 | 8,000 |
| Volunteer allowances | 5 | MONTH | 2400.00 | 12,000 |
| National Society / Prog. Coord. and Officer | 5 | MONTH | 6000.00 | 30,000 |
| Workshops&Seminars | | | | 35,000 |
| Evaluation | | | | 35,000 |
| Travel | | | | 10,000 |
| Federation / local travel | 5 | MONTH | 2000.00 | 10,000 |
| General & Admin expenses | | | | 40,000 |
| General Admin | 5 | MONTH | 4000.00 | 20,000 |
| Publicity, PR & visibility | | | | 15,000 |
| Communications, telephone, internet | 5 | MONTH | 1000.00 | 5,000 |
| FIELD BUDGET/Subtotal | | | | 218,500 |
| PROGRAMME SUPPORT BUDGET/Subtotal | | | 6,5% | 15,190 |
| GRAND TOTAL CHF: | | | | 233,690 |

How we work

All International Federation assistance seeks to adhere to the [Code of Conduct for the International Red Cross and Red Crescent Movement and Non-Governmental Organizations \(NGO's\) in Disaster Relief](#) and is committed to the [Humanitarian Charter and Minimum Standards in Disaster Response \(Sphere\)](#) in delivering assistance to the most vulnerable.

The International Federation's activities are aligned with its Global Agenda, which sets out four broad goals to meet the Federation's mission to "improve the lives of vulnerable people by mobilizing the power of humanity".

Global Agenda Goals:

- Reduce the numbers of deaths, injuries and impact from disasters.
- Reduce the number of deaths, illnesses and impact from diseases and public health emergencies.
- Increase local community, civil society and Red Cross Red Crescent capacity to address the most urgent situations of vulnerability.
- Reduce intolerance, discrimination and social exclusion and promote respect for diversity and human dignity.

Contact information

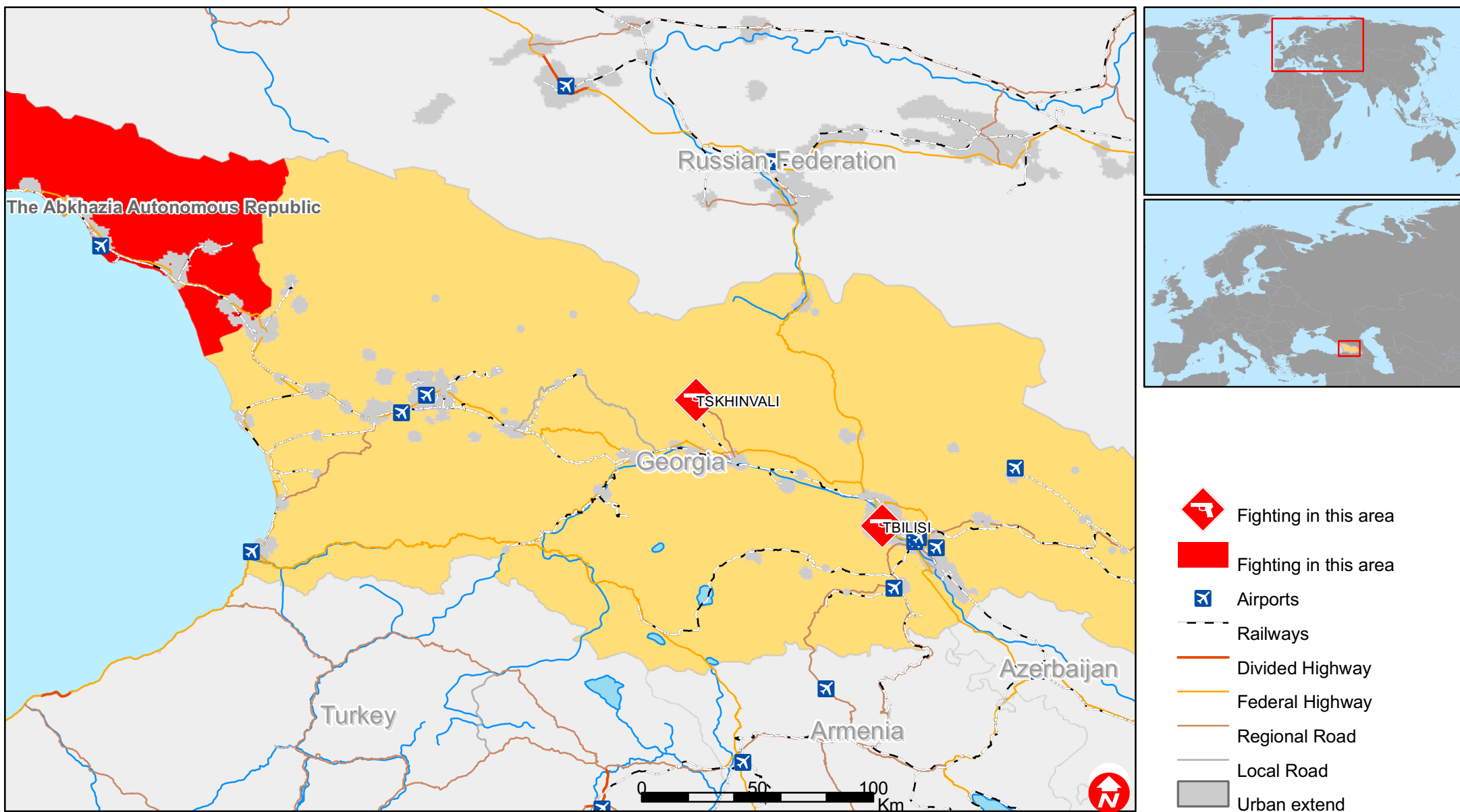
For further information specifically related to this operation please contact:

- In the Georgia Red Cross Society: Nana Tskhondia, Acting Secretary General; phone: +995 32 94 06 50; fax: +995 32 95 33 04; email: ntskhondia@redcross.ge
- In the Country Representation: Elkhan Rahimov, Country Representative, Tbilisi; phone: +995 32 29 36 59; fax: +995 32 20 50 49; email: elkhan.rahimov@ifrc.org
- In Europe Zone Office: Slobodanka Curic, Disaster Management Coordinator, Budapest, phone: +36 1 8884 510; fax: +36 1 336 1516; email: slobodanka.curic@ifrc.org
- In Geneva: Linda Stops, Operations Coordinator, phone: +41 227 304300; email: linda.stops@ifrc.org

[<Map below; click here to return to the title page>](#)



Georgia: Reinforcing response capacities



The maps used do not imply the expression of any opinion on the part of the International Federation of the Red Cross and Red Crescent Societies or National Societies concerning the legal status of a territory or of its authorities.

Map data sources: ESRI, DEVINFO, International Federation, MDRGE001.mxd