

DREF operation



International Federation
of Red Cross and Red Crescent Societies

Kenya: Drought

DREF operation n° MDRKE006

Glide No: OT-2008-000098-KEN

01 July 2008

The International Federation's Disaster Relief Emergency Fund (DREF) is a source of un-earmarked money created by the Federation in 1985 to ensure that immediate financial support is available for Red Cross and Red Crescent response to emergencies. The DREF is a vital part of the International Federation's disaster response system and increases the ability of national societies to respond to disasters.

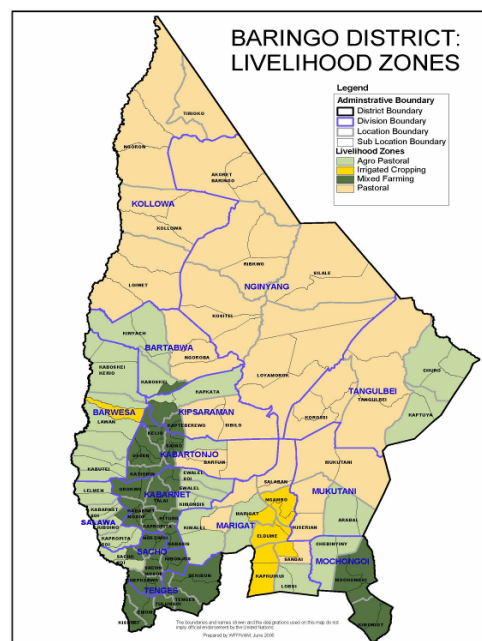
CHF 200,961 (USD 193,232 or EUR 124,434) has been allocated from the Federation's Disaster Relief Emergency Fund (DREF) to support the Kenya Red Cross Society in preparing to deliver immediate emergency food assistance to 87,092 beneficiaries. Unearmarked funds to repay DREF are encouraged.

Summary: Following the post-election violence in January and February 2008, Kenya is facing a number of challenges in ensuring food security for the vulnerable populations in the country. Crop production in 2008 is expected to be below average, primarily due to impact of post-election violence. Low food supplies and high food prices already prevail. In addition, displaced persons have not yet been fully resettled and remain food insecure.

Although rainfall has been near normal for the April-June season for most parts of the country there are exceptions resulting in pockets of extreme drought following poor November rains. The North-western pastoral areas are facing an acute food and livelihood crisis due to a combination of livestock disease (PPR), below normal rains and ongoing ethnic conflict. Following an assessment

carried out by Kenya Red Cross Society (KRCS) staff together with World Food Programme (WFP) and Government representatives in two Districts of Baring and East Pokot, 87,092 people have been identified as in urgent need of assistance. The KRCS are requesting for a DREF allocation of CHF **200,961** as a contribution to the response to the most critical food and health needs in the two districts. The initial response will focus on distribution of basic food rations provided by the Kenya Government.

This operation is expected to be implemented over a period of one month, and will therefore be completed by 25 July 2008. A Final Report will be made available three months after the end of the operation (by 25 October 2008). This DREF operation will soon be followed by the launch of an Emergency Appeal, covering a wider range of relief activities in the two districts and for a longer period. Activities planned in the DREF operation will then be integrated into the Emergency Appeal.



[<Click here for the DREF budget summary or here for contact details>](#)

The situation

Baringo and East Pokot Districts has seven divisions with the worst hit divisions being Sacho, Marigat, Mukutani, Tenges, Kolowa, Tangelbei and Nginyang. Slightly above 75 percent of the population in East Pokot and 40 percent in Baringo districts have been affected by acute shortage, with the most vulnerable being at a higher risk as they solely depend on relief food managed by World Vision. Food security is depleted and food deficit are expected this year due to the high fertilizers cost, inflation food rates, poor seed quality and change of climatic patterns. Poverty levels are on the rise making most of the population to resort to child labour and eating wild plants. Four deaths were reported in Sacho with malnourishment rates at 20 percent. The total population for the two districts is 158,853 people, out of this, 87,092 people are worst hit and need very urgent humanitarian assistance.

The rainfall received did not improve the browse and pasture conditions in some parts of the project area, a general poor rejuvenation was noted and the distances to water sources and pastures remained far. A total of 74.6 mm average rainfall was received from four Arid Lands Resource Management Project (ALRMP) recording stations only. As a result the quality and quantity of forage remained worse due to poor rejuvenation of pasture. Water availability for both human and livestock generally worsened. An insignificant shower was received sporadically resulting in little impact on the grazing resources and water sources in some areas only. Animals have moved to the neighbouring districts of Turkana, Samburu, Laikipia, Marakwet and Keiyo in search of pasture. Livestock body condition is poor for all the species in all the livelihood zones following the poor rejuvenation of browse and pasture during the season coupled with Peste des Petits disease outbreak in some parts of the project area.

Milk production decreased a great deal owing to poor health of the animals caused by lack of sufficient browse and pasture. Milk production at household level declined giving fear to the fact that it is the only food depended upon at the moment by the pastoralists and children. The average prices of livestock decreased in all the species owing to poor body condition coupled with closure of goats' markets in early February 2008 as a result of outbreak of Peste Des Petits Ruminants (PDPR) disease. Households are forced to sell goats and sheep at throw away prices at off markets in order to get the basic needs. Prices in poultry decreased due to low demand.

Crops planted have failed due to lack of rainfall leading to a major threat to food security at the household level. Crops planted in the agro-pastoral livelihood zones of the project area have dried up due to lack of rain. The average prices of food crops and other commodities increased owing to scarcity of the supplies in the markets within the district and the neighbouring districts. Demand for the foods is high at the moment though pastoralists do not have money as they cannot sell their animals legally due to closure of goats and sheep markets.

Casual labour, petty trade and sale of charcoal and sale of wood products was the other alternative source of income for most households after the sale of livestock. The general nutritional status of children MUAC percent worsened. Households are currently employing restriction of consumption of food by adults to allow more for children as a coping mechanism.

Table 1: East Pokot/Baringo Districts Warning Stages

Livelihood Zone	Warning stage	Trend
Pastoral	Alarm	Worsening
Agro pastoral	Alarm	Worsening
Irrigated Cropping	Alarm	Worsening
Mixed farming	Alarm	Worsening

Impact of Food Insecurity

- High drop out and/or absenteeism of school children up to 5 percent.
- Increased malnutrition.
- Child labour on the increase.
- Increase of petty crimes.
- Environmental degradation.
- High poverty level.
- Poor rejuvenation of browse and pasture.
- Long distances to grazing areas make livestock body condition poor.
- Milk production and prices are down.
- Low prices of livestock.

Coordination and partnerships

A few organizations are involved in mitigating the effects of the drought. Arid Lands Resource Management Programme (ALRMP) is involved in a number of activities, including;

- Construction of tank and installation of pump for Kolowa water project.
- Construction of roof rain harvesting tank for Kamurio primary school.
- Excavation of Kapsipeiwa water pan in Kipsaraman division and Cheporuswo water pan in Marigat division.
- Laying pipes and tank construction for Karimadow Borehole in Churo division.
- Solar fencing of farms in Lemuye community in East Pokot.
- Water harvesting, Spreading and Irrigation in Chesirimion, Mondri division.
- Laying pipes for Tangulbei Borehole – ALRMP and/or Ministry of Water.
- Soil conservation measures in Seretion community – ALRMP and/or Community.
- Equipping of Kapturo dispensary in Bartabwa division – ALRMP and/or Community.

Others

World Vision is undertaking a water project in Ewalel Soi Location that includes extension of water supply line and construction of communal masonry tanks as the area has no access to piped water

Red Cross and Red Crescent action

The Kenya Red Cross Society assessment team comprising Regional Post Election Violence Emergency Coordinator, Regional Health Officer, Regional WatSan Officer and Health Logistician visited the drought-affected areas of Ewalel Soi Location, Kabasis and Nginyang divisions to conduct a Food Security assessment. The assessment noted that there is need for a “*food for work*” policy to be adopted to decrease the dependency burden on relief aid which is not a sustainable long term solution to the drought condition.

The needs

Baringo Central

Table 2: Number of people affected in Baringo Central

Area	Area Population	Number of people food insecure	Other details
Ewalel Soi Location	2,100	1,500	400 others are vulnerable groups
Sacho Division	7,112	3,414	
Sacho Mosop division	4,500	4,410	
Sacho Location	19,000	5,700	
Makutani division	12,000	7,000	
Marigat Division	36,692	7,964	
Kipsaraman division	3,488	2,205	
Total	84,892	32,193 (40%)	

Ewalel Soi Location

Food security: The areas affected in Ewalel Soi Location are Rorobai, Maramar, Barsemoi, Koibokures and Cheboroswo. Majority of the inhabitants depend on farming as a source of income, but are unable to currently earn a living due to the inherent drought that has been witnessed in the region. The drought in this area has been mainly attributed to the lack of rain leading to food insecurity as food prices and other farming implements have sky rocketed. 100 goats out of 8,000 goats and 30 cows have died as a result of the drought.

The drought has also had negative impact on the education of the children as the drop out rate in schools have greatly increased since the food that was initially being supplied by the government for the lunch school programme is no longer available. Cases of students going to look for wild fruits in the forest instead of going to school have also been reported.

Water and sanitation: There is a possibility of drilling bore holes due to the water table levels, but funds are lacking to undertake this expensive venture. Lack of latrine construction materials coupled with traditional

beliefs and taboos have contributed to the low use and ownership of latrines in this region since the bush or open method of defecation is more prominent in this area. The residents of the location have formed a CBO named Koyonin to address the water problems they are facing and work closely with World Vision. There was little recharge of water sources following the little showers received in some parts. The water sources currently in use are a few pans and dams, natural rivers, traditional river wells, shallow wells, boreholes and lakes. Distance to the nearest water source remained at an average of 4.5 km for most of the households.

Health: The area is served by various health facilities, which are lacking competent personnel. The population is served by support staff of the health facility due to lack of trained health personnel. The nearest health facility is 5-7km away.

Kabasis Location

The region is currently experiencing severe drought condition due to lack of rain. The inhabitants of Kabasis are food insecure due to lack of farming land as farming is their source of livelihood. The food security in the area has greatly been reduced by the presence of Internally Displaced Persons (IDPs) who came from Solai, Molo, Elburgon, Mochongoi, Uasin Gishu, Kitale and Timboroa. These IDPs were living with their relatives, neighbours or well wishers hence the dependency ratio on the limited food sources that were available was greatly increased.

Due to the good relations that the community share, they could not stand the fact that the IDPs who form part of their community were to be accommodated in camps hence the reason why they came out in large numbers to assist them. This also explains why the case of IDPs in this area went unnoticed although the IDPs complained of feeling neglected. However, majority of this IDPs have been integrated in the community and children absorbed in the nearby schools. The IDPs have been receiving tremendous support from Christian Childrens' Fund (CCF), World Vision, churches and Kabasis CBO.

Drought has also been caused by land slides. The terrain of this region is mainly steep slopes which are not conducive for farming. The Government has also issued alerts to discourage farming on steep slopes since the area is prone to land slides. The situation is made worse especially in the event of heavy rains where huge chunks of land are dislocated and damage to property is inevitable.

The region also exhibits a unique form of poverty referred to as "*green poverty*". This is manifested by the presence of very fertile earth and green terrain, which gives the impression that the area is very fertile while in essence no farming can take place as a result of the steep slopes and occurrence of land slides. 60 percent of the food in Kabasis comes from farmers who have bought land elsewhere but they were born in Kabasis. This has always been so in order to make Kabasis food secure. Currently, the situation has been made worse as the people who were supplying this food are now IDPs and are back in Kabasis depending on food donations from their relatives, neighbours or well wishers.

Sacho Mosop Location

The residents are food insecure. Residents were initially farmers, but now they are dependant on relief food due to the drought. Majority of the residents in this area own land outside Sacho Mosop and after harvesting they bring it back to their community due to the productivity of the land. Three deaths have been reported due to starvation in this area, that is, two elderly men aged between 60 to 85 years and a child.

Sacho Division

There is a food shortage in Sacho Division. It is projected that in July to August, 60 percent of people will be on food insecurity. This year target was to dig 1,620 hectares of land and projected about 12,000 bags of maize. It is anticipated that a family can depend on 8 bags of maize in year to feed which is scarce. There is a deficit of 11,000 bags of maize due to drought, poor quality of seeds and rain shortage.

Makutania

Cattle rustling in the area are rampant in Rogus and Kiseria location. People living in Makutani, Bartabwa in Barwesa were displaced by Pokot raiders. Majority of these displaced persons camp at Barwesa, Leisaraman and parts of Salawa. Farmers in Makutani division abandoned their farms from July 2007 due to insecurity by cattle rustling.

Marigat Division

The most affected locations are Kimondis, Leimelel and Sandayi. Majority of these people are pastoralist communities. Some of the economic activities are fishing, horticulture, livestock and bee keeping.

East Pokot District

Table 3: Number of people affected East Pokot District

Areas in East Pokot	Population	Number affected
Nginyang /Mondi	33,536.	
Kolowa	17,237	
Tangulbei	22,425	
Total	73,198	54,899 (75%)

Most areas do not usually experience short rains in most areas of the district; hence most farmers do not grow annual crops during this season. 52 percent of the farmers use improved seed and fertilizer.

The proposed operation

Emergency relief assistance to 87,092 people (14,515 families) affected by drought in West Pokot and Baringo districts

Objective 1: To provide relief food to drought-affected communities in Baringo and East Pokot.

Activities

- One-off distribution of relief food (cereals, pulses, vegetable oil and unimix).

Expected Results

- Resilient communities against the impacts of the disaster.
- Human lives are saved from starvation and death.

Objective 2: To provide primary and secondary transportation of food and non-food items and warehousing.

Activities

- Primary and secondary transportation of food and non-food items.
- Distribution of food and non-food items.
- Transportation of personnel and volunteers.

Expected Results

- Efficient dispatch of food and non food items to the final distribution point.
- Efficient and effective logistical support to the operation.
- Staff and volunteers transported.

Objective 3: To contribute to reduction of mortality and morbidity related to communicable diseases among the drought affected population.

Activities

- Support implementation of medical outreaches in areas with poor access to health facilities, which will entail treatment of common ailments, immunization, micronutrients supplementation, deworming among others

Expected Results

- Regular medical outreaches implemented in the affected region.
- Vulnerable groups (children under five years, lactating and pregnant women) supported with nutritional supplements, among others.

How we work

All International Federation assistance seeks to adhere to the [Code of Conduct](#) for the International Red Cross and Red Crescent Movement and Non-Governmental Organizations (NGO's) in Disaster Relief and is committed to the [Humanitarian Charter and Minimum Standards in Disaster Response \(Sphere\)](#) in delivering assistance to the most vulnerable.

The International Federation's activities are aligned with its Global Agenda, which sets out four broad goals to meet the Federation's mission to "improve the lives of vulnerable people by mobilizing the power of humanity".

Global Agenda Goals:

- Reduce the numbers of deaths, injuries and impact from disasters.
- Reduce the number of deaths, illnesses and impact from diseases and public health emergencies.
- Increase local community, civil society and Red Cross Red Crescent capacity to address the most urgent situations of vulnerability.
- Reduce intolerance, discrimination and social exclusion and promote respect for diversity and human dignity.

Contact information

For further information specifically related to this operation please contact:

- **In Kenya:** Mr. Abbas Gullet, Secretary General, Kenya Red Cross Society, Email; gullet.abbas@kenyaredcross.org Phone 254.20.60.35.93; 254.20.3950000 Fax 254.20.60.35.89
- **In Kenya:** Dr. Asha Mohammed, Head of Eastern Africa Zone, International Federation, Nairobi, email: asha.mohammed@ifrc.org; Telephone: +254.20.283.51.24, Fax: +254.20.271.27.77
- **In Geneva:** John Roche, Operations Coordinator for Eastern and Southern Africa regions; email: john.roche@ifrc.org; Telephone: +41.22.730.4400; Fax: +41 22 730 0395

[<DREF budget summary below; click here to return to the title page>](#)

PROGRAMME BUDGETS

Appeal no.(s) selected: MDRKE006

Delegation code(s) selected: 64

PROGRAMME:	Coordination & Implementation								Total CHF
PROJECT:	PKE023								
PROG TYPE:	CM								
	CHF	CHF	CHF	CHF	CHF	CHF	CHF	CHF	
Shelter	0	0	0	0	0	0	0	0	0
Construction	0	0	0	0	0	0	0	0	0
Clothing & Textiles	0	0	0	0	0	0	0	0	0
Food	132,554	0	0	0	0	0	0	0	132,554
Seeds & Plants	0	0	0	0	0	0	0	0	0
Water & Sanitation	0	0	0	0	0	0	0	0	0
Medical & First Aid	0	0	0	0	0	0	0	0	0
Teaching Materials	0	0	0	0	0	0	0	0	0
Utensils & tools	0	0	0	0	0	0	0	0	0
Other Supplies & Services	0	0	0	0	0	0	0	0	0
SUPPLIES	132,554	0	0	0	0	0	0	0	132,554
Land & Buildings	0	0	0	0	0	0	0	0	0
Vehicles	0	0	0	0	0	0	0	0	0
Computers & Telecom	0	0	0	0	0	0	0	0	0
Medical equipment	0	0	0	0	0	0	0	0	0
Other Equipment	0	0	0	0	0	0	0	0	0
LAND, VEHICLES & EQUIPMEN	0	0	0	0	0	0	0	0	0
Storage	0	0	0	0	0	0	0	0	0
Distribution & Monitoring	0	0	0	0	0	0	0	0	0
Transport & Vehicles cost	41,511	0	0	0	0	0	0	0	41,511
TRANSPORT & STORAGE	41,511	0	0	0	0	0	0	0	41,511
International Staff	0	0	0	0	0	0	0	0	0
Regionally Deployed Staff	0	0	0	0	0	0	0	0	0
National staff	0	0	0	0	0	0	0	0	0
National Society Staff	13,833	0	0	0	0	0	0	0	13,833
Consultants	0	0	0	0	0	0	0	0	0
PERSONNEL	13,833	0	0	0	0	0	0	0	13,833
Workshops & Training	0	0	0	0	0	0	0	0	0
WORKSHOPS & TRAINING	0	0	0	0	0	0	0	0	0
Travel & related expenses	0	0	0	0	0	0	0	0	0
Information & Public Rela	0	0	0	0	0	0	0	0	0
Office Running Costs	0	0	0	0	0	0	0	0	0
Communication Costs	0	0	0	0	0	0	0	0	0
Professional Fees	0	0	0	0	0	0	0	0	0
Other General Expenses	0	0	0	0	0	0	0	0	0
GENERAL EXPENDITURE	0	0	0	0	0	0	0	0	0
Asset Depreciation	0	0	0	0	0	0	0	0	0
DEPRECIATION	0	0	0	0	0	0	0	0	0
Contributions & Transfers	0	0	0	0	0	0	0	0	0
CONTRIBUTIONS & TRANSFERS	0	0	0	0	0	0	0	0	0
Programme Support	13,062	0	0	0	0	0	0	0	13,062
PROGRAMME SUPPORT	13,062	0	0	0	0	0	0	0	13,062
TOTAL BUDGET:	200,961	0	0	0	0	0	0	0	200,961