

# DREF operation



International Federation  
of Red Cross and Red Crescent Societies

## Mozambique: Cholera

DREF operation n° MDRMZ005  
GLIDE n° EP-2008-000219-MOZ  
20 November, 2008

The International Federation's Disaster Relief Emergency Fund (DREF) is a source of un-earmarked money created by the Federation in 1985 to ensure that immediate financial support is available for Red Cross and Red Crescent response to emergencies. The DREF is a vital part of the International Federation's disaster response system and increases the ability of national societies to respond to disasters.

**CHF 82,218 (USD 75,154 or EUR 52,368) has been allocated from the Federation's Disaster Relief Emergency Fund (DREF) to support Mozambique Red Cross Society (CVM)<sup>1</sup> in delivering immediate assistance to some of the affected households. Unearmarked funds to repay DREF are encouraged.**

**Summary:** This operation is expected to be implemented over three months, and will therefore be completed by 28 February 2008; a Final Report will be made available three months after the end of the operation

[<click here for contact details,](#)  
[or here to view the map of the affected area>](#)



Mozambique Red Cross volunteers during hygiene promotion activities at a cholera treatment centre.

## The situation

The local health authority reported a cholera outbreak in Guro district in Manica Province, which borders with Zimbabwe. A total of 233 cases and 51 deaths have been recorded in Guro since the first of November 2008. Zambezia Province reported 17 suspected cases, which received treatment at the cholera treatment centre (CTC). In Tete Province (Tete City, Chiuta, Changar and Macanga), 72 cases were reported. According to the Epidemiological Bulletin issued by the Ministry of Health, a cumulative total of 7,867 cases and 83 deaths due to cholera have been recorded between October 2007 and November 2008. The mortality rate is 1.06% and it is feared that more lives could be lost if the outbreak is not amicably controlled.

<sup>1</sup> In Portuguese: Cruz Vermelha de Moçambique

## Coordination and partnerships

In response to the local provincial appeal for humanitarian assistance, several organizations have intensified preventative and curative activities in the areas at risk. Humanitarian organizations such as OXFAM, Save the Children and some local institutions are assisting with the provision of food aid, bedding, medicines, oral rehydration solutions (ORS), hygiene and cleaning material. Monitoring activities have been conducted in collaboration with the District Health Directorates and the National Disaster Management Institute.

In addition to the collective and individual hygiene promotion activities, the local authorities in Manica Province have reactivated the provincial and district committees to conduct cholera prevention, water purification in coordination with CVM.

## Red Cross and Red Crescent action

At the request of the Red Cross National Society in Mozambique, the International Federation of Red Cross and Red Crescent Societies (IFRC) released emergency funding for the operations. The operation is running according to a well crafted plan of action and is expected to take at least three months. Part of the funds will be used to cover volunteering cost, particularly for services provided at the cholera treatment centres and sentinel sites.

So far CVM through its provincial office has undertaken the following activities:

- Mobilising volunteers and refresher training on cholera prevention and control through Manica, Zambezia and Tete CVM provincial offices.
- Conducting a rapid assessment in Guro District and consistently monitoring the situation.
- Training volunteers on cholera prevention and control activities
- Actively identifying case and referring to CTC and public health centres.
- Distributing ORS and promoting disinfection and use of safe water.

## The needs

CVM has identified the needs for clean water supply, sanitation facilities, hygiene promotion and access to treatment. The DREF will be used to cover operational costs in water trucking and treatment, super chlorination of wells, distribution of information, education and communication (IEC) material and for logistics.

## The proposed operation

CVM plan of action for the cholera operation outlines the following activities:

- Training volunteers on health education, care and prevention of diarrhoeal diseases at community level;
- Conducting hygiene promotion and sensitization on hygienic practices;
- Door-to-door screening of cholera cases;
- Support the Ministry of Health at CTC through participation of CVM volunteers.
- Providing First Aid services, administering ORS and referring critical cases to health facilities;
- Water purification and construction of household latrines
- Establishing eight sentinel sites in Manica (2) Zambezia (2), Tete (3) and Niassa (1).

**Table 1: Area of intervention**

| <b>Province</b> | <b>Districts/Highly risky areas</b>                    |
|-----------------|--|
| <b>Maputo</b>   | Matola, Moamba, Manhiça                                |
| <b>Tete</b>     | Tete City, Changara, Moatize and Chiuta                |
| <b>Manica</b>   | Guro and Tambara                                       |
| <b>Zambézia</b> | Quelimane City, Gurue, Mopeia, Mocuba and Alto Molocue |
| <b>Nampula</b>  | Nampula City, Moma and Angoche                         |
| <b>Niassa</b>   | Cuamba and Lichinga                                    |

The operation is heavily dependent on the services of CVM volunteers. Below is a tabulation of the volunteer capacity needed for the operation.

**Table 2: Volunteers involved in the operations**

| <b>Province</b> | <b>Number of volunteers</b> |                 |              |
|-----------------|-----------------------------|-----------------|--------------|
|                 | <b>Currently involved</b>   | <b>Required</b> | <b>Total</b> |
| Maputo          | 32                          | 28              | 60           |
| Manica          | 15                          | 30              | 45           |
| Zambézia        | 34                          | 35              | 69           |
| Nampula         | 32                          | 30              | 63           |
| Tete            | 35                          | 44              | 79           |
| Niassa          | 42                          | 38              | 80           |
| <b>Total</b>    | <b>190</b>                  | <b>205</b>      | <b>395</b>   |

## How we work

*All International Federation assistance seeks to adhere to the [Code of Conduct for the International Red Cross and Red Crescent Movement and Non-Governmental Organizations \(NGO's\) in Disaster Relief](#) and is committed to the [Humanitarian Charter and Minimum Standards in Disaster Response \(Sphere\)](#) in delivering assistance to the most vulnerable.*

The International Federation's activities are aligned with its Global Agenda, which sets out four broad goals to meet the Federation's mission to "improve the lives of vulnerable people by mobilizing the power of humanity".

### Global Agenda Goals:

- Reduce the numbers of deaths, injuries and impact from disasters.
- Reduce the number of deaths, illnesses and impact from diseases and public health emergencies.
- Increase local community, civil society and Red Cross Red Crescent capacity to address the most urgent situations of vulnerability.
- Reduce intolerance, discrimination and social exclusion and promote respect for diversity and human dignity.

## Contact information

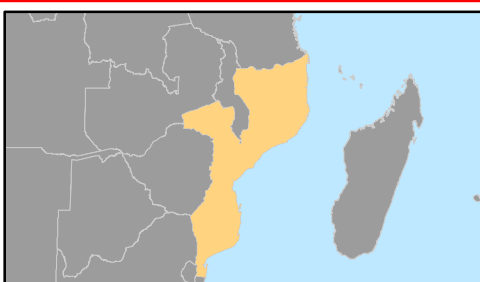
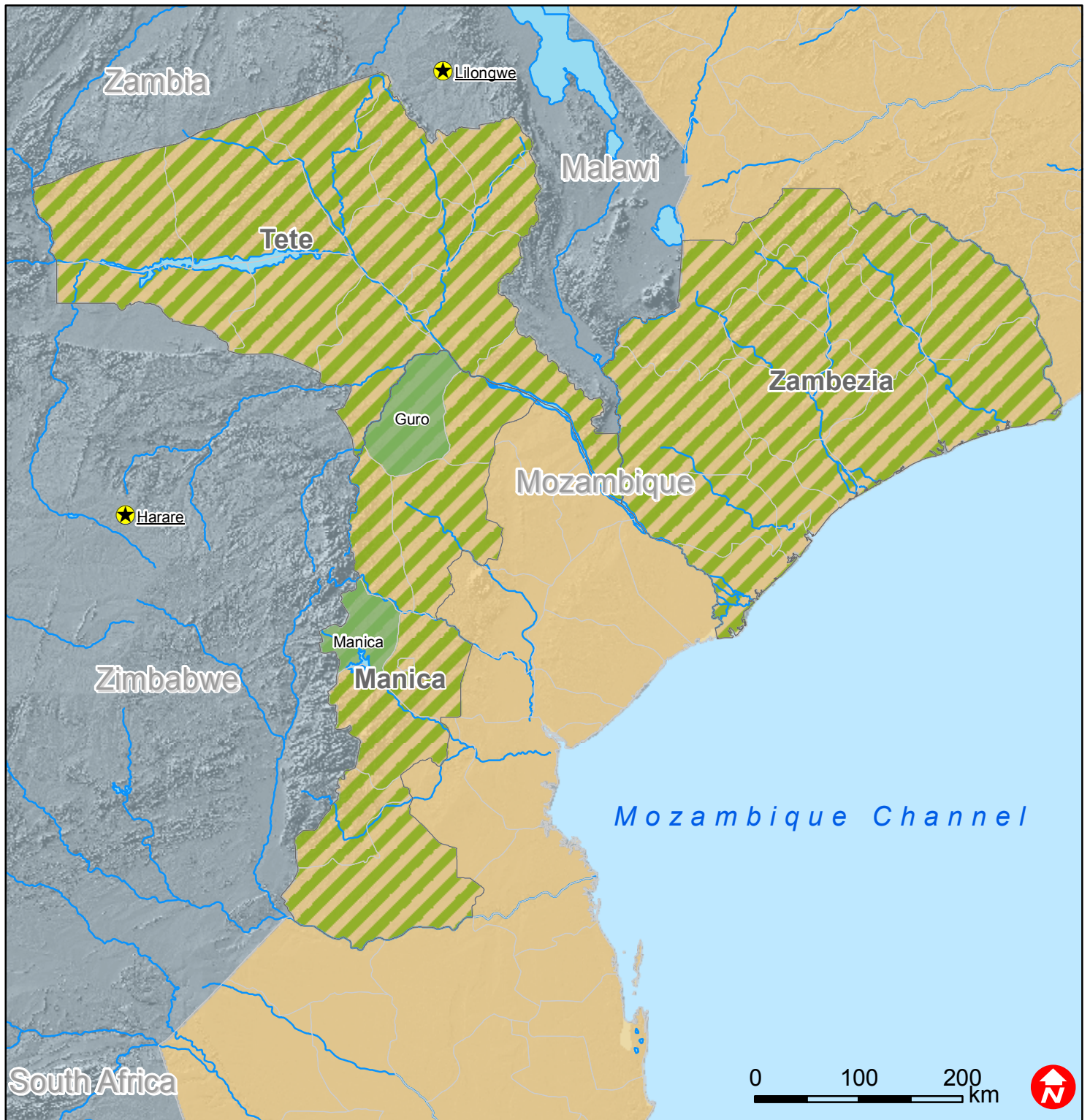
### For further information specifically related to this operation please contact:

- **In Mozambique:** Fernanda Teixeira, Secretary General, Maputo, Email [fernanda.teixeira@redcross.org.mz](mailto:fernanda.teixeira@redcross.org.mz); Phone: Tel: +258.21.497.721; +258.1.490.943; Fax +258.1.497.725
- **In Mozambique Country Representation:** Martin Acosta; Email: [martin.acosta@ifrc.org](mailto:martin.acosta@ifrc.org); Phone: Tel: +258.21.497.721. ext 117; Fax: +258.1.497.725
- **In Southern Africa Zone:** Françoise Le Goff, Head of Zone Office, Johannesburg; Email [francoise.legoff@ifrc.org](mailto:francoise.legoff@ifrc.org); Phone: Tel: +27.11.303.9700; +27.11.303.9711; Fax: +27.11.884.3809; +27.11.884.0230
- **In Geneva:** John Roche, Operations Coordinator, Email: [john.roche@ifrc.org](mailto:john.roche@ifrc.org); Phone: +41.22.730.4400, Fax: +41.22.733.03.95

[<Map below; click here to return to the title page>](#)



# Mozambique: Cholera outbreak



- Capitals
- Provinces affected
- Most affected area
- Lakes
- Rivers