

DREF operation



International Federation
of Red Cross and Red Crescent Societies

Tanzania: Technical Accident and Floods

DREF operation n° MDRTZ007
GLIDE n° AC-2008-000040-TZA and
FL-2008-000041-TZA
16 April 2008

The International Federation's Disaster Relief Emergency Fund (DREF) is a source of un-earmarked money created by the Federation in 1985 to ensure that immediate financial support is available for Red Cross and Red Crescent response to emergencies. The DREF is a vital part of the International Federation's disaster response system and increases the ability of national societies to respond to disasters.

CHF 11,593 (USD 11,593 or EUR 7,365) has been allocated from the Federation's Disaster Relief Emergency Fund (DREF) to support the Tanzania Red Cross National Society in conducting needs assessments and supporting the miners trapped under the flooded mines as well as their family members. Un earmarked funds to repay DREF are encouraged.

Summary: Search and rescue operations are still in the very initial stages and so far a total of five dead bodies are reported to have been recovered while dozens were pulled out alive and taken to hospital. As of 31 March 2008, more than 65 artisan miners are still considered trapped underground, and their status still unknown.



Volunteers in search for the trapped miners

This operation is expected to be implemented over one month, and will therefore be completed by 30 April 2008. A Final Report will be made available three months after the end of the operation.

[<Click here to view the map and here to view budget summary>](#)

The situation

Over 65 artisan miners are feared drowned/dead while on underground small scale gemstone/tanzanite mining activities in Mererani area. The incidence, as reported by the local media and as confirmed by the Central Government, occurred on the 29 March 2008. It is further reported that over 150 miners were approximately 300 meters deep underground when five mining pits they were working in got flooded with storm water following heavy rains that ensued in the area. The country is currently in the long rain season with the most parts of the country experiencing heavy downpour.

Heavy downpours have been experienced since mid March following the start of the long rains "Masika" almost throughout the country. In nearby Arusha region – at Mto wa Mbu area more than 1,500 people have been left homeless after their houses were flooded by storm water on 29 March 2008. For more information on Tanzania floods, please refer to <http://www.ifrc.org/docs/appeals/08/MDRTZ006.pdf>.

Coordination and partnerships

The search and rescue operation is coordinated by the Government of Tanzania. However, there are two other private companies who are involved in the search and rescue exercise. The Tanzania Red Cross Society will supplement the work of the Government in the search and rescues exercise and in identification of the most vulnerable affected community members by the floods.

Red Cross and Red Crescent action

The TRCNS has dispatched its Disaster Response Manager to support the National Society local branch in coordinating a rapid assessment of the situation, in collaboration with other partners on ground. Along with the assessment team, the National Society is planning to send an action team comprising of 15 persons including first aid people with first aid kits (50), stretchers (20), body bags (50) and tents (2)

The needs

Beneficiary selection: The beneficiaries of the operation will be identified with the help of the 1,500 affected community members in Mererani area in Arusha. A detailed assessment is underway to determine the most vulnerable affected community members for this operation.

The proposed operation

The allocated DREF is to support the Tanzania Red Cross National Society to do a preliminary needs assessment for the 1,500 affected community members and to assist in the search and rescue of over 65 miners trapped under the flooded mines.

Objective: To assess the immediate needs of the 1,500 affected community members.

Activities planned

- Conduct rapid emergency needs and capacity assessments.
- Develop beneficiary targeting strategy and registration system to deliver intended assistance.

Objective: To assist in the search and rescue for the over 65 miners trapped under the flooded mines.

Activities planned:

- Deploy 30 Red Cross action team members to offer psychosocial support to the affected miners and their relatives.

How we work

All International Federation assistance seeks to adhere to the [Code of Conduct for the International Red Cross and Red Crescent Movement and Non-Governmental Organizations \(NGO's\) in Disaster Relief](#) and is committed to the [Humanitarian Charter and Minimum Standards in Disaster Response \(Sphere\)](#) in delivering assistance to the most vulnerable.

The International Federation's activities are aligned with its Global Agenda, which sets out four broad goals to meet the Federation's mission to "improve the lives of vulnerable people by mobilizing the power of humanity".

Global Agenda Goals:

- Reduce the numbers of deaths, injuries and impact from disasters.
- Reduce the number of deaths, illnesses and impact from diseases and public health emergencies.
- Increase local community, civil society and Red Cross Red Crescent capacity to address the most urgent situations of vulnerability.
- Reduce intolerance, discrimination and social exclusion and promote respect for diversity and human dignity.

Contact information

For further information specifically related to this operation please contact:

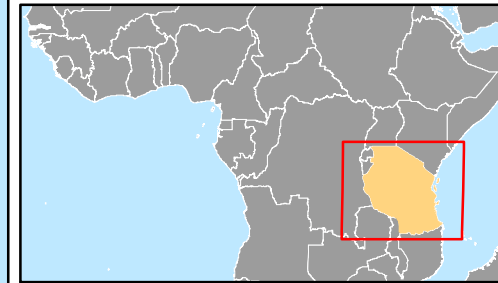
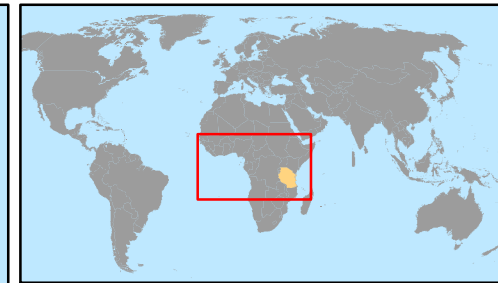
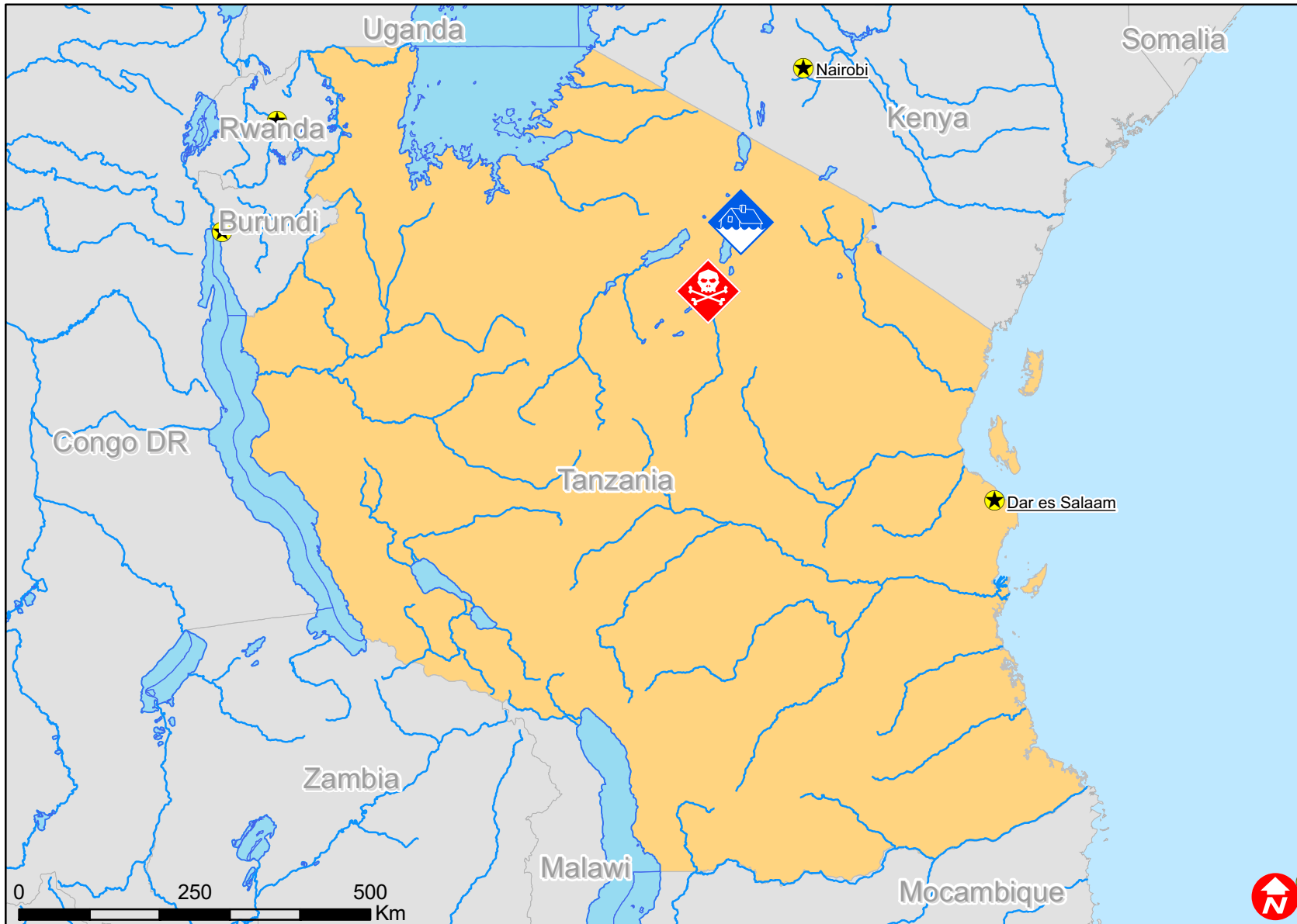
- **In Tanzania:** Adam Kimbisa, Secretary General, Tanzania Red Cross National Society, Dar-es-Salaam; email: logistics@cats-net.com or utouh2002@yahoo.com; Telephone: +255.22.2600156; Fax: +255.22.2600156
- **In Kenya:** Dr. Kiflemariam Amdemariam, Ag. Disaster Management Coordinator, email: kiflemariam.amdemariam@ifrc.org Telephone: +254.736.888.288 or Philimon Majwa, Disaster Management Manager, Nairobi; Telephone: +254.20.283.50.00; email: philimon.majwa@ifrc.org

- **In Kenya:** Ken Odur, Federation Ag. Head of Eastern Africa Zone, Nairobi, email: ken.odur@ifrc.org; Telephone: +254.20.283.52.22, Fax: +254.20.271.27.77;
- **In Geneva:** John Roche, Operations Coordinator for Eastern and Southern Africa regions; phone: +41.22.730.4400; fax: +41 22 730 0395; email: john.roche@ifrc.org

[<Map and Budget Summary below; click here to return to the title page>](#)



Tanzania: Technical accident and floods



Floods in Mto wa Mbu



Mine disaster in Mererani

PROGRAMME BUDGETS SUMMARY

Appeal no.(s) selected: MDRTZ007

Delegation code(s) selected: 64

PROGRAMME:	Health & Care	Disaster Management	Humanitarian Values	Organisational Development	Coordination & Implementation	Emergency	Total CHF
	CHF	CHF	CHF	CHF	CHF	CHF	
Shelter	0	0	0	0	0	0	0
Construction	0	0	0	0	0	0	0
Clothing & Textiles	0	0	0	0	0	0	0
Food	0	0	0	0	0	0	0
Seeds & Plants	0	0	0	0	0	0	0
Water & Sanitation	0	0	0	0	200	0	200
Medical & First Aid	0	0	0	0	0	0	0
Teaching Materials	0	0	0	0	0	0	0
Utensils & tools	0	0	0	0	0	0	0
Other Supplies & Services	0	0	0	0	0	0	0
SUPPLIES	0	0	0	0	200	0	200
Land & Buildings	0	0	0	0	0	0	0
Vehicles	0	0	0	0	0	0	0
Computers & Telecom	0	0	0	0	0	0	0
Medical equipment	0	0	0	0	0	0	0
Other Equipment	0	0	0	0	0	0	0
LAND, VEHICLES & EQUIPMEN	0	0	0	0	0	0	0
Storage	0	0	0	0	0	0	0
Distribution & Monitoring	0	0	0	0	0	0	0
Transport & Vehicles cost	0	0	0	0	1,040	0	1,040
TRANSPORT & STORAGE	0	0	0	0	1,040	0	1,040
International Staff	0	0	0	0	0	0	0
Regionally Deployed Staff	0	0	0	0	0	0	0
National staff	0	0	0	0	0	0	0
National Society Staff	0	0	0	0	8,100	0	8,100
Consultants	0	0	0	0	0	0	0
PERSONNEL	0	0	0	0	8,100	0	8,100
Workshops & Training	0	0	0	0	0	0	0
WORKSHOPS & TRAINING	0	0	0	0	0	0	0
Travel & related expenses	0	0	0	0	0	0	0
Information & Public Rela	0	0	0	0	0	0	0
Office Running Costs	0	0	0	0	0	0	0
Communication Costs	0	0	0	0	0	0	0
Professional Fees	0	0	0	0	0	0	0
Other General Expenses	0	0	0	0	1,500	0	1,500
GENERAL EXPENDITURE	0	0	0	0	1,500	0	1,500
Asset Depreciation	0	0	0	0	0	0	0
DEPRECIATION	0	0	0	0	0	0	0
Contributions & Transfers	0	0	0	0	0	0	0
CONTRIBUTIONS & TRANSFERS	0	0	0	0	0	0	0
Programme Support	0	0	0	0	753	0	753
PROGRAMME SUPPORT	0	0	0	0	753	0	753
TOTAL BUDGET:	0	0	0	0	11,593	0	11,593