

DREF operation



International Federation
of Red Cross and Red Crescent Societies

Burkina Faso: Meningitis and measles

DREF operation n° MDRBF007
GLIDE n° EP-2009-000050-BFA
25 February 2009

The International Federation's Disaster Relief Emergency Fund (DREF) is a source of un-earmarked money created by the Federation in 1985 to ensure that immediate financial support is available for Red Cross and Red Crescent response to emergencies. The DREF is a vital part of the International Federation's disaster response system and increases the ability of national societies to respond to disasters.

CHF 99,400 (USD 85,941 or EUR 67,008) is requested from the Federation's Disaster Relief Emergency Fund (DREF) to support the Burkinabe Faso Red Cross in reaching some 3,000,000 people through a health sensitization and education campaign. Un-earmarked funds to repay DREF are encouraged.

Summary: An outbreak of measles and meningitis has occurred in Burkina Faso. The meningitis epidemic broke out in four health districts: Solenzo, Toma, Manni and Batié. As for the measles epidemic, it affected three other ones, Bogodogo, Fada and Sindou. A number of 178 people have been confirmed dead due to meningitis and 13 from measles. In response to those two outbreaks a DREF has been launched. The Burkinabe Red Cross Society (BRCS) plans to mobilize its volunteers for health education and sensitizing activities.



In Burkina Faso volunteers are active in sensitizing the communities.

This operation is expected to be implemented over 3 months, and will therefore be completed by 20 May 2009; a Final Report will be made available three months after the end of the operation by August 2009.

[<click here for the DREF budget ,](#)
[here for contact details,](#)
[or here to view the map of the affected area>](#)

The situation

In Burkina Faso, a meningitis epidemic has caused 1,248 cases and 178 deaths by Week 7, with a case fatality rate of 14.26% according to the Ministry of Health (MoH) and the World Health Organization (WHO). Four health districts are affected: Solenzo, Toma, Manni and Batié.

There is a concurrent measles epidemic throughout Burkina Faso which has caused 2,751 cases and 13 deaths (case fatality rate 0.47%) at the end of week 7. The most affected districts are Bogodogo, Fada and Sindou, which borders with Ivory Coast.

Coordination and partnerships

The MoH has notified the meningitis and measles outbreaks and is in the process of procuring and providing access to drugs in the affected health districts. It is also conducting epidemiological surveillance throughout the country and investigating the meningitis outbreak in the most affected districts of Solenzo, Toma and Manni. A sensitization campaign sponsored by the Ministry of Health is broadcasting key messages on meningitis and measles via television and radio spots.

Red Cross and Red Crescent action

The Burkinabe Red Cross Society has a pool of volunteers trained in meningitis prevention and response in place and the volunteers have already been active in the concerned districts. The Red Cross is aware that both meningitis and measles are highly contagious and spread very quickly and is keen to avoid the situation that evolved in 2007 when there was a major meningitis outbreak. The Red Cross as a long-term partner of the Ministry of Health and is keen to be involved with proposed Plan of Action.

The needs

Beneficiary selection

The direct and indirect beneficiaries of this operation are 3,000,000 persons of the most affected areas in Burkina Faso prone to the epidemics. The national society plans to mobilize 835 volunteers and 57 supervisors with specific knowledge in the area of community mobilization, sensitization, health education and prevention of epidemic. The BRCS will be concentrating their efforts on the 7 most affected regions which are: Cascades, Sud Ouest, Boucle du Mouhoun, Centre Est, Centre, Centre Sud, Centre Est. Therefore the total number of health districts they will be operational in is 35 which are covered by 24 Red Cross operational committees.

The proposed operation

Hygiene promotion

General objective: To contribute to the reduction of meningitis and measles associated morbidity and mortality of the 2009 measles and meningitis epidemic in Burkina Faso.

Specific Objectives:

- organising the sensitization and social mobilisation campaign via local Red Cross committees in 35 districts at risk from meningitis and measles targeting at least 3 million beneficiaries;
- ensuring effective capacity building within the Red Cross National Society;
- ensuring relationship building between key partners and the Ministry of Health.

Activities planned:

- mobilization of 835 volunteers and 57 supervisors;
- one day debriefing for volunteers and supervisors;
- delivery of key messages regarding transmission and prevention via door-to-door sensitization;
- organising of community mobilization and sensitization via focus group discussions in public places such as schools, markets, churches and mosques;
- broadcasting campaign through rural radio stations;
- active case finding and referral to health structures such as health posts and centres.

Expected outcomes:

- All Red Cross activities are implemented in a coordinated way thus avoiding duplication of services with other actors. Red Cross experience is also shared with others at coordination meetings and during surveillance, reporting, response and advocacy activities at the national and district levels;
- A number of 835 well trained and motivated volunteers and 57 supervisors of the Burkinabe Red Cross Society have been able to reach the most affected people and have provided life saving support to those falling sick from the epidemic;

- Hygiene and health education, early case detection and referral as well as sensitizations have contributed in reducing the number of victims;
- Hygiene and health education as well as sensitizations have led to some long-term behaviour change preventing and reducing the impact of future outbreaks;
- The public has come to know more about the role of the Red Cross/Red Crescent Movement.

How we work	
<p>All International Federation assistance seeks to adhere to the <u>Code of Conduct for the International Red Cross and Red Crescent Movement and Non-Governmental Organizations (NGO's) in Disaster Relief</u> and is committed to the <u>Humanitarian Charter and Minimum Standards in Disaster Response</u> (Sphere) in delivering assistance to the most vulnerable.</p>	
<p>The International Federation's activities are aligned with its Global Agenda, which sets out four broad goals to meet the Federation's mission to "improve the lives of vulnerable people by mobilizing the power of humanity".</p>	<p>Global Agenda Goals:</p> <ul style="list-style-type: none"> • Reduce the numbers of deaths, injuries and impact from disasters. • Reduce the number of deaths, illnesses and impact from diseases and public health emergencies. • Increase local community, civil society and Red Cross Red Crescent capacity to address the most urgent situations of vulnerability. • Reduce intolerance, discrimination and social exclusion and promote respect for diversity and human dignity.
Contact information	
<p>For further information specifically related to this operation please contact:</p> <ul style="list-style-type: none"> • In Ouagadougou: Weleti Maiga, Secretary General, Burkinabe Red Cross Society, email: <u>magaweleti@yahoo.fr</u>, phone: (226).76.66.56.77; • In Dakar : Alasan Senghore, Federation Head of West and Central Africa Zone Office, Senegal, email: <u>alasan.senghore@ifrc.org</u>, Phone: (221) 33.869.36.41, Fax: (221).33.820.25 34; Hans Ebbing, Health and Care Coordinator, email: <u>hans.ebbing@ifrc.org</u>, phone: (221) 33.869.39.15, Aïssa Fall Gueye, Sahel Regional Health Manager, email: <u>aissa.fall@ifrc.org</u>; phone: (221) 33.869 36.68; • In Geneva: David Lynch, Operations Coordinator, email: <u>david.lynch@ifrc.org</u>; phone: (41) 227.30 46.75. 	

[<DREF budget \(if available\) and map below; click here to return to the title page>](#)

DREF BUDGET SUMMARY

Burkina Faso Meningitis-Measle 2009

ORIGINAL

RELIEF NEEDS

500 Shelter	0
505 Construction Materials	0
510 Clothing & Textiles	0
520 Food	0
523 Seeds & Plants	0
530 Water & Sanitation	0
540 Medical & First Aid	0
550 Teaching Materials	8,567
560 Utensils & Tools	0
570 Other Supplies & Services	0
Total Relief Needs	8,567

CAPITAL EQUIPMENT

580 Land & Buildings	0
581 Vehicles Purchase	0
582 Computers & Telecom Equipment	0
584 Office/Household Furniture & Equip.	0
587 Medical Equipment	0
589 Other Machinery & Equipment	0

TRANSPORT, STORAGE & VEHICLES

590 Storage - Warehouse	0
592 Distribution & Monitoring	0
593 Transport & Vehicles Costs	3,624

PERSONNEL

600 International Staff	0
640 Regionally Deployed Staff	0
661 National Staff	64,734
662 National Society Staff	0
670 Consultants	0

WORKSHOPS & TRAINING

680 Workshops & Training	6,192
680 <i>Monitoring and evaluation</i>	0

GENERAL EXPENSES

700 Travel	3,000
710 Information & Public Relations	1,080
730 Office running costs	
740 Communication Costs	2,244
750 Professional Fees	0
760 Financial Charges	0
790 Other General Expenses	3,480

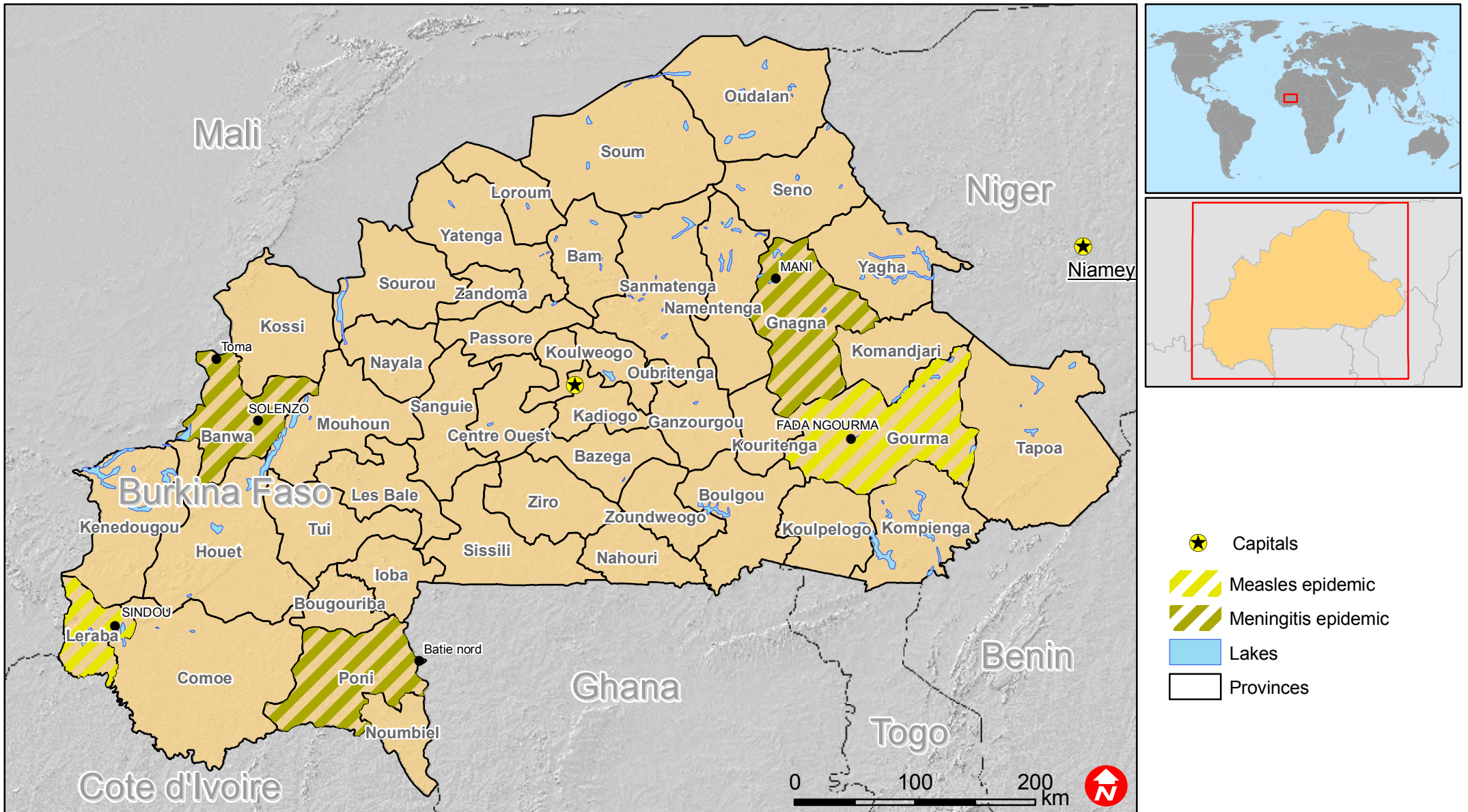
PROGRAMME SUPPORT

500 D	0
-------	---

Total Operational Needs	90,814
Total Appeal Budget (Cash & Kind)	99,381
Available Ressources	
Net Request	99,381



Burkina Faso: Meningitis and measles



The maps used do not imply the expression of any opinion on the part of the International Federation of the Red Cross and Red Crescent Societies or National Societies concerning the legal status of a territory or of its authorities.
 Map data sources: ESRI, DEVINFO, International Federation, MDRBF007.mxd