

# DREF operation



International Federation  
of Red Cross and Red Crescent Societies

## Botswana Floods

**DREF operation n° MDRBW001**  
**GLIDE n° FL-2009-000120-BWA**  
**30 June 2009**

The International Federation's Disaster Relief Emergency Fund (DREF) is a source of un-earmarked money created by the Federation in 1985 to ensure that immediate financial support is available for Red Cross and Red Crescent response to emergencies. The DREF is a vital part of the International Federation's disaster response system and increases the ability of national societies to respond to disasters.

**CHF 153,978 (USD 143,061 or EUR 101,837) has been allocated from the Federation's Disaster Relief Emergency Fund (DREF) to support the Botswana Red Cross Society (BRCS) in delivering immediate assistance to 620 families affected by floods and to replenish pre-positioned stock used by the National Society in assisting another 200 families. Unearmarked funds to repay DREF are encouraged.**

### Summary:

The occurrence of heavy rains in the central provinces of Botswana in June 2009 caused seven districts to flood and affected a total of 620 families or 3,100 individuals. The affected households lived in mud dwellings that collapsed in the heavy rain, leaving the families in need of emergency shelter, blankets and food. The damage assessments being undertaken by BRCS, however, may reflect an increase in the number of affected families.



One of the damaged houses in Kweneng district

Compounding the unseasonal and unexpected June rains is the unavailability of relief stock to continue relief operations due to the flash floods experienced in the north-west provinces of Botswana in March 2009. Approximately 3,789 persons were affected in the flood-ravaged Ngamiland district, located in the north-west corner of the country. BRCS responded by distributing emergency relief items from its pre-positioned stock to approximately 200 families, thereby depleting its stock of readily available relief items.

This operation is expected to be implemented over three months, and will therefore be completed by 30 September 2009. A Final Report will be available three months after the end of the operation (26 December 2009).

## The situation

Between 7 and 10 June 2009, heavy rains flooded the seven districts of Serowe/Palapye, Kweneng, Tutume, Boteti, North West, Mahalapye and Bobirwa in central Botswana. The Southern African Development Community (SADC) Regional Remote Sensing Unit confirms that the Department of Meteorology registered rainfall figures of more than 100mm in 24 hours in this area. The average annual rainfall for most of Botswana is less than 50mm.

**Table 1:** List of affected districts and households in June 2009

District	No. affected households
Serowe/Palapye	381
Kweneng	122
Tutume	32
Boteti	27
North West	20
Mahalapye	58
Bobirwa	17
<b>Total</b>	<b>657</b>

It is common practice for farmers to harvest and arrange produce in open fields to allow for sun-drying during the usually dry winter season. The surprise rains, however, caught the farmers still harvesting, which has led to fears that the crop yield may have been affected by the rains, especially sorghum, which is the staple food of Botswana.

Most houses destroyed by the floods were mud dwellings (commonly used in rural areas), which collapsed easily in the heavy rains. The immediate emergency needs, therefore, are for shelter, blankets and food.

The flash floods experienced in the North West provinces of Botswana in March 2009 affected 3,789 persons in Ngamiland, located at the beginning of the Okavango Delta, close to Namibia and Angola. The BRCS assisted ten villages, with a total population of 698 individuals (200 families), in carrying out damage assessments and distributing emergency relief items from its pre-positioned stock. The regional disaster response team (RDRT) demonstrated the building of shelters using the tarpaulins and wooden poles distributed by the government to the beneficiaries.

According to the BRCS program manager, the National Society has depleted its pre-positioned stocks in responding to the victims of the flash floods in March. The BRCS therefore requires relief supplies for distribution to the 620 families currently affected. The latest information gathered is that the floods in this region are subsiding, and hydrologists in Namibia (upstream of the Botswana areas) have stopped monitoring the rivers.

**Table 2:** Relief items distributed by the National Society in March

Number of Beneficiaries	698
Tarpaulins	300
Mosquito nets	310
Kitchen sets	103
Blankets	318
Water purification tablets	16,000
Soap bars	5,000
Jerry cans	207

## Coordination and partnerships

BRCS coordinates disaster response activities with the National Disaster Management Committee at national level and with the District Disaster Management Committees at the community level. The district committees are made up of governmental and non-governmental agencies that provide direct assistance to disaster victims. The BRCS is part of these district disaster management committees, not only in terms of coordinating service provision, but also in training committee staff in disaster management and relief distribution. The BRCS plans to also train community leaders in disaster management in order to improve early warning systems and service delivery.

## Red Cross and Red Crescent action

The Botswana Red Cross, with support from the International Federation of Red Cross and Red Crescent Societies (IFRC), is in the process of finalising a detailed Plan of Action to guide the implementation of the emergency operation across identified districts. The action plan will support the National Society in implementing the activities outlined below for a period of three months, until September 2009.

## The proposed operation

Relief distributions (food and basic non-food items)	
<b>Objective: Provide 3,100 flood-affected people with appropriate food and non-food relief items in seven districts namely Serowe/Palapye, Kweneng, Tutume, Boteti, North West, Mahalapye, Bobirwa</b>	
Expected Results	Activities planned:
Relief items are distributed to 3,100 people in seven districts for a period of three months.	<ul style="list-style-type: none"> <li>• Develop beneficiary targeting strategy and registration system.</li> <li>• Mobilise volunteers to support rapid assessments and relief distributions.</li> <li>• Distribute food and non-food relief items.</li> <li>• Monitor and evaluate relief activities and provide reporting on relief distributions.</li> <li>• Ensure distributions are carried out according to assessments and selection criteria that identify actual needs and vulnerable groups.</li> </ul>

### Water, sanitation, and hygiene promotion

**Objective: Reduce the risk of water-borne and water-related diseases through the provision of safe water and adequate sanitation to 3,100 beneficiaries in seven affected districts.**

Expected Results	Activities planned:
Safe water is provided to 3,100 beneficiaries affected by floods.	<ul style="list-style-type: none"><li>• Distribute water purification tablets.</li><li>• Distribute jerry cans to 620 households.</li><li>• Carry out hygiene promotion activities in affected districts.</li></ul>

### Emergency shelter

**Objective: A total of 620 most vulnerable flood-affected families in seven districts are living in a safe and healthy environment within three months of the beginning of the operation.**

Expected Results	Activities planned:
The targeted 620 affected families are provided with material for shelter and are living with dignity.	<ul style="list-style-type: none"><li>• Assess the extent of the shelter needs and preferred solutions.</li><li>• Develop a beneficiary targeting strategy and registration system to deliver the intended assistance.</li><li>• Distribute two tarpaulins per family to facilitate the construction of safe and adequate locally appropriate shelter.</li><li>• Provide National Society staff, volunteers and each household with technical assistance and guidance in the construction of the agreed shelter design.</li><li>• Provide households with support on safe sanitation.</li></ul>

## How we work

*All International Federation assistance seeks to adhere to the [Code of Conduct for the International Red Cross and Red Crescent Movement and Non-Governmental Organizations \(NGO's\) in Disaster Relief](#) and is committed to the [Humanitarian Charter and Minimum Standards in Disaster Response \(Sphere\)](#) in delivering assistance to the most vulnerable.*

The International Federation's activities are aligned with its Global Agenda, which sets out four broad goals to meet the Federation's mission to "improve the lives of vulnerable people by mobilizing the power of humanity".

### Global Agenda Goals:

- Reduce the numbers of deaths, injuries and impact from disasters.
- Reduce the number of deaths, illnesses and impact from diseases and public health emergencies.
- Increase local community, civil society and Red Cross Red Crescent capacity to address the most urgent situations of vulnerability.
- Reduce intolerance, discrimination and social exclusion and promote respect for diversity and human dignity.

## Contact information

For further information specifically related to this operation please contact:

- **In Botswana:** Mabel Rammekwa, Secretary General, Gaborone Email: [brcs@info.bw](mailto:brcs@info.bw); Phone: Tel: +267. 35.24.65; Fax: 267.35.23.52
- **In Southern Africa Zone:** Françoise Le Goff, Head of Zone Office, Johannesburg; Email : [francoise.legoff@ifrc.org](mailto:francoise.legoff@ifrc.org); Phone: Tel: +27.11.303.9700; +27.11.303.9711; Fax: +27.11.884.3809; +27.11.884.0230
- **In Southern Africa Zone:** Disaster Management Department: Farid Aiywar; Email: [farid.aiywar@ifrc.org](mailto:farid.aiywar@ifrc.org); Phone: Mobile: +27.83.440.0564 Tel: +27.11.303.9700; +27.11.303.9721; Fax: +27.11.884.3809; +27.11.884.0230

### For pledges towards the operation:

- In IFRC Southern Africa Zone: Laurean Rugambwa; Resource Mobilisation Coordinator, Johannesburg; Email [zonerm.southafrica@ifrc.org](mailto:zonerm.southafrica@ifrc.org); Phone: Tel: +27.11.303.9700; Fax: +27.11.884.3809; +27.11.884.0230

### For Planning, Monitoring, Evaluation and Reporting (PMER) enquiries:

- In IFRC Southern Africa Zone: Theresa Takavarasha; PMER Manager, Johannesburg; Email [terrie.takavarasha@ifrc.org](mailto:terrie.takavarasha@ifrc.org); Phone: Tel: +27.11.303.9700; Mobile: +27.83.413.3061; Fax: +27.11.884.3809; +27.11.884.0230

### For mobilization of relief items and Logistics inquiries:

- Regional Logistic Unit in Dubai; Peter Gleniste; Regional Logistics Coordinator; Email: [peter.gleniste@ifrc.org](mailto:peter.gleniste@ifrc.org); Phone: Tel: +971.4883.3887

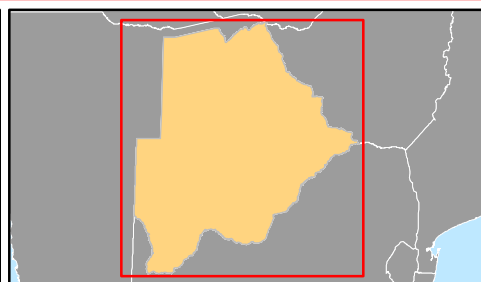
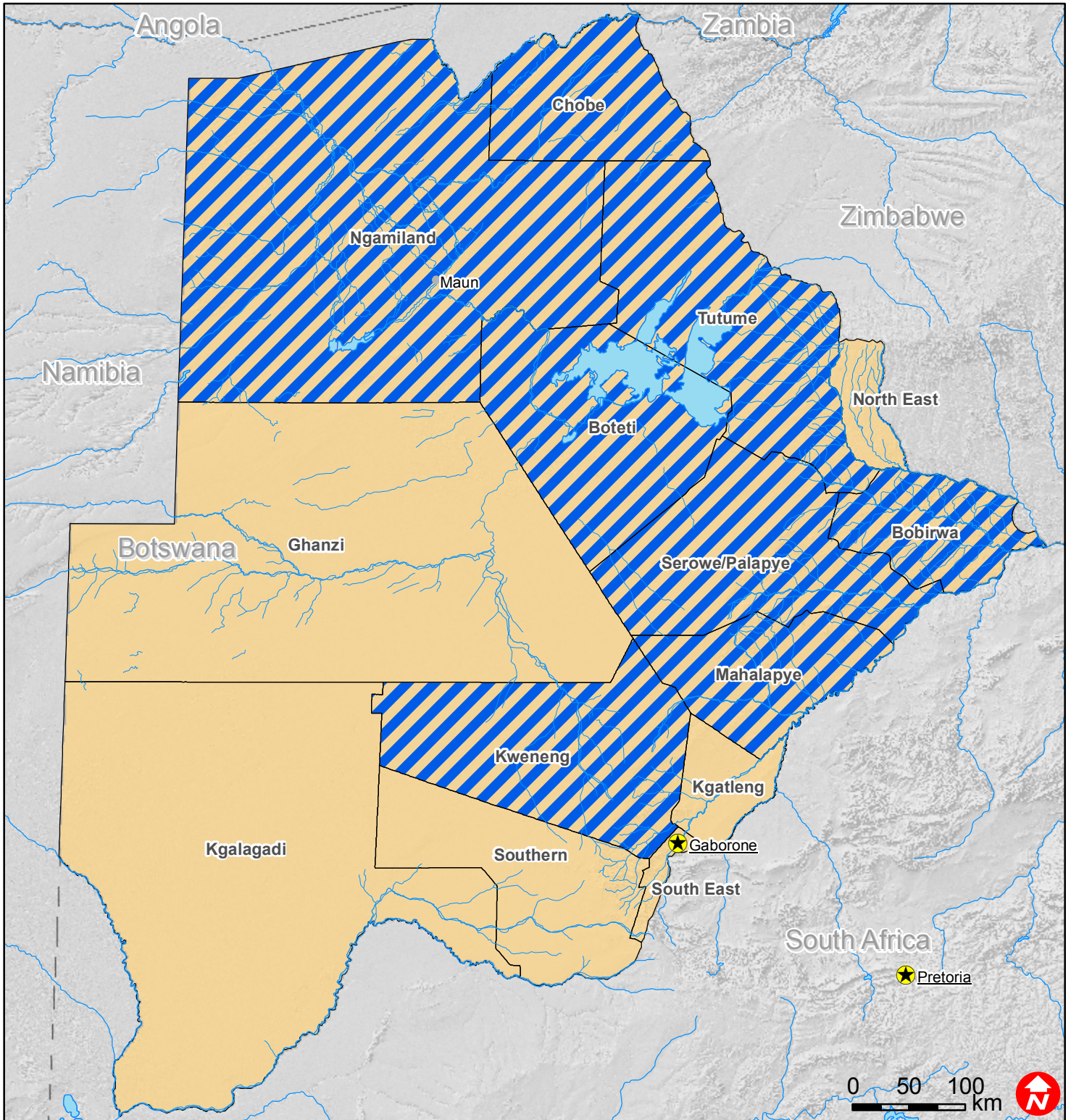
[<DREF budget and map below; click here to return to the title page>](#)

## **BOTSWANA FLOODS 2009 DREF BUDGET SUMMARY**

	<b>ORIGINAL</b>
<b><u>RELIEF NEEDS</u></b>	
Shelter	32,000
Clothing & Textiles	0
Food	0
Seeds & Plants	34,400
Water & Sanitation	12,000
Medical & First Aid	0
Teaching Materials	0
Utensils & Tools	34,200
Other Supplies & Services	0
<hr/>	
<b>Total Relief Needs</b>	<b>112,600</b>
<b><u>CAPITAL EQUIPMENT</u></b>	
Land & Buildings	0
Vehicles Purchase	0
Computers & Telecom Equipment	0
Medical Equipment	0
Other Machinery & Equipment	0
<b><u>TRANSPORT, STORAGE &amp; VEHICLES</u></b>	
Storage - Warehouse	22,369
Transport & Vehicles Costs	5,000
<b><u>PERSONNEL</u></b>	
International Staff	
Volunteer Incentives	4,000
Consultants	
<b><u>WORKSHOPS &amp; TRAINING</u></b>	
Workshops & Training	
<b><u>GENERAL EXPENSES</u></b>	
Travel	
Information & Public Relations	
Office running costs	
Communication Costs	
Professional Fees	
Core cost & sundry	
<b><u>PROGRAMME SUPPORT</u></b>	
Programme Support - PSR	10,009
<hr/>	
<b>Total Operational Needs</b>	<b>41,378</b>
<hr/>	
<b>Total Appeal Budget (Cash &amp; Kind)</b>	<b>153,978</b>



# Botswana: Floods



- Capitals
- Cities
- Rivers
- Lakes
- Affected areas
- Districts