

DREF operation



International Federation
of Red Cross and Red Crescent Societies

Republic of Congo: Population Movement

DREF operation n° MDRCG005

23 November, 2009

The International Federation's Disaster Relief Emergency Fund (DREF) is a source of un-earmarked money created by the Federation in 1985 to ensure that immediate financial support is available for Red Cross and Red Crescent response to emergencies. The DREF is a vital part of the International Federation's disaster response system and increases the ability of national societies to respond to disasters.

CHF 247,375 (USD 244,200 or EUR 163,857) has been allocated from the Federation's Disaster Relief Emergency Fund (DREF) to support the Congolese Red Cross in delivering immediate assistance to some 10,000 beneficiaries, i.e. the most vulnerable among the over 24,000 refugees from the Democratic Republic of the Congo (DRC). Un-earmarked funds to repay DREF are encouraged.

Summary: An inter-ethnic conflict over disputed land and fishing rights started in Equateur province of the DRC in October 2009 between the Munzayas and the Enyelle-Tandas groups has spilled over to a humanitarian crisis.

Thousands of villagers have been forced to flee into neighbouring Republic of Congo (RoC), in the Likouala division that borders with both the Central African Republic (CAR) and DRC.



DRC refugees arrived in RoC in their numbers/UN Radio Okapi

The United Nations High Commission for Refugees (UNHCR) reports say about 24,194 DRC people have already sought refuge along the Oubangui River in RoC (the boundary between both countries), and that more refugees are arriving on a daily basis. The refugees are installed in over 25 sites in the Dongou, Imfpondo, Eboko, Boyélé and Bétou localities of the RoC, in the Likouala division. While some of the refugees have been staying in schools, churches, markets, cultural centres, police stations and factories, others have been accommodated in host families. Some are living in the open air and others are scattered in the bush and have been complaining of lack of food, medicines and clothes. Some mothers and their children have been discovered sleeping in the open air and on the ground. There is an urgent need to assist them so as to prevent their already precarious living conditions from deteriorating. Access to those localities is very difficult, and can only be made in 90% cases by water, especially access to Bétou. The assessment conducted in the field revealed the urgent need to provide these refugees with food and non-food items in order to avoid a serious humanitarian disaster. The evaluation team included the Congolese Red Cross Disaster Management Officer and the National Society's food security focal point that joined the RoC Minister of Social Affairs, Humanitarian Action and Solidarity. Thus this DREF will enable the Congolese Red Cross to contribute to improving the living conditions of the most vulnerable among the over 24,000 DRC refugees in RoC, i.e. about 10,000 people. The

sectors of intervention will include relief distribution, water and sanitation, emergency shelter and emergency health.

This operation is expected to be implemented over three months, and will therefore be completed by 20 February, 2010; a Final Report will be made available three months after the end of the operation (by 20 May, 2009).

[<click here for the DREF budget, here for contact details, or here to view the map of the affected area>](#)

The situation

An interethnic conflict over disputed land and fishing rights started in Equateur province of the DRC on 29 October 2009. The conflict between the minority Munzayas and the majority Enyelle-Tandas ethnic groups has pushed thousands of villagers to flee into neighbouring Republic of Congo (RoC), into the Likouala division that shares its boundaries with both the Central African Republic (CAR) and DRC. The conflict has spread across the whole of the Dongo region (DRC), and the populations were left with no other choice than to cross the Oubangui River and seek refuge in the Dongou, Impfondo, Eboko, Boyélé and Bétou localities of the RoC, in the Likouala division.

The United Nations radio in DRC (Radio Okapi) reported that about 24,000 people from DRC have already sought refuge in RoC, and have been staying in schools, churches, markets, cultural centres, police stations and factories. Other refugees have been accommodated in host families. UNHCR has identified about 25 sites where the refugees are found. The sites cover 160 km along the Oubangui River, and most of them are in Betou and Dongou located over 50 km from Impfondo, Eboko and Boyele. According to Radio Okapi, the greatest single number of refugees, i.e. about 3,300 people, is found in Eboko, a small village located along the Oubangui River. About 10,000 to 15,000 DRC refugees, mostly from Dongo (DRC), have arrived in the Betou locality, which has about 4 sites. All of these refugees have lost almost all of their belongings.

In Betou, the Minister visited 4 sites, including the Moundzombo primary school and the Falco factory where about 4,000 to 6,000 refugees have been staying. In Dongou, the number of refugees (over 10,000) is threatening to exceed that of the local population. Some mothers and their children have been discovered sleeping in the open air and on the ground. The risk of water borne diseases is very high. In addition to the 3 official sites known in Dongou, some refugees are scattered everywhere, and even in places that are yet to be identified in the bush. A good number of refugees are not registered upon their arrival. UNHCR said the number of refugees is increasing on a daily basis and is now estimated at some 24,194, including 70% of women and children, 25 % youths and 5 % old persons.

Ninety percent (90%) of the sites can only be accessed by water, especially access to Betou where a motor canoe is needed and the travel takes 3 to 4 days, or by plane from Brazzaville to Impfondo and from Impfondo to Betou with UNHCR's plane. Impfondo and Dongou can be accessed by road.

As far as the health situation is concerned, wounded refugees are admitted into the Betou basic hospital and in the Impfondo *Le Pionnier evangelic clinic*. Some of them have had limbs amputated. There is shortage of drugs, household materials (cooking kits) and potable water in the various sites. There is also a serious food shortage.

Coordination and partnerships

On 11 November 2009, a Republic of Congo Government's humanitarian mission went to Betou, in Northern RoC, which shares boundaries with DRC, to assess the situation of DRC refugees. The joint mission that was conducted by the RoC Minister of Social Affairs, Humanitarian Action and Solidarity, also included the representatives of UN agencies, namely the World Food Programme (WFP), Food and Agriculture Organization (FAO), United Nations Children's Fund (UNICEF) and the World Health Organization (WHO), French and US embassies, as well as one representative of the Congolese Red Cross. The mission visited over 15 sites. Close to 15,000 tonnes of food and non-food items have already been distributed in the field, the Minister said, but a lot of needs still remain to be covered given the situation of the refugees in the sites visited. UNHCR has started distributing blankets, mattresses and mosquito nets, but this has remained largely insufficient. A few movements of food and non-food items have been made in some localities using the army's helicopter. The remaining items will be transported by water route. Some community-based

agencies like Medecins d’Afrique have also supported Government efforts. The Interior Minister conducted a delegation of parliamentarians and MONUC (the UN mission in Congo) to the conflict region to try and find a solution to the conflict. The ICRC Field Officer for Cooperation was also present in the field with the CRC Disaster Manager to assess the situation

Red Cross and Red Crescent action

Immediately after the crisis was announced, the national Disaster Management Officer of the Congolese Red Cross (CRC) travelled to the Likouala division to assist the divisional committee of the Red Cross in evaluating the situation. The food security focal point of the National Society also joined the Government and Red Cross teams already in the field. A total of 150 Red Cross volunteers have been mobilized and dispatched in two main sites with the greater number of refugees, namely Impfondo (100 Red Cross volunteers) which is the chief place of the division, and Dongou (50 Red Cross volunteers). The volunteers have not yet been able to go to Betou as this can only be reached by water, and the means for this are not yet available. The Dongou local committee of the Red Cross has just been created, and the volunteers have started sensitizing the populations against malaria, water borne diseases and HIV/AIDS. Visibility materials are currently being transported to this locality. The International Federation’s Representative and the ICRC Regional Delegate in Yaoundé are maintaining contact to see how movement cooperation can facilitate the assistance to the refugees.

The needs

The beneficiaries targeted by the Red Cross are around 10,000 of the most vulnerable refugees, including 70% women and children, 25 % youths and 5 % old persons. The most urgent needs of these people will include drugs, food, clothes, mattresses, mats, mosquito nets, blankets and delivery kits. Mindful of the fact that the number of refugees is ever increasing, it is estimated that ultimately about 7,500 families will need assistance, i.e. about 35,000 people. Although UNHCR has already covered part of the food needs, more food is required as the number of refugees keeps on increasing. The target is to assist at least 2,000 of the most vulnerable families, i.e. the 10,000 people that will benefit from Red Cross assistance within the framework of this operation. There will be further need for 4,000 blankets, 4,000 mats, 3,000 mosquito nets, 4,000 pieces of soap, 2,000 jerry cans, 2,000 buckets, 2,000 cooking kits, 500 hygiene kits for women of child bearing age.

On its part, the National Society will train about 200 volunteers, and provide the three local committees with 3 motorbikes, 100 bicycles, 30 megaphones, 200 security patches, a 4WD vehicle, a canoe (to be rented), 100 raincoats and 100 pairs of boots.

The proposed operation

Mindful of the fact that the Betou locality is yet to have its own Red Cross local committee, the CRC Program Coordinator, who also has an organizational development background, will travel to Betou to set up a local committee and recruit 50 volunteers who will be trained and involved in this operation. For the Impfondo and Dongou areas that already have local committees, a resource person of the National Society will be deployed there to train Red Cross volunteers and coach them throughout the operation. The National Society has competent resource persons in the area of camp management of refugees. These resource persons will contribute to the success of the operation.

As the refugees are scattered all along the Oubangui River, the Congolese Red Cross will need six motorbikes and about 100 bicycles to cover all the localities. In order to ensure smooth monitoring of the operation in all the localities, CRC officials believe that they will need a canoe with a motor.

Since the volunteers’ network will be developed in those localities, the National Society will work in close collaboration with WFP under the guidance of UNHCR, to distribute food and non-food items. If refugee camps are installed, CRC will position itself to carry out activities within the camps, including sensitization, water and sanitation, distribution and so on. In this case, coordination meetings will enable the National Society to identify its sectors of intervention. In any case, the target populations will be the most vulnerable amongst the refugees, estimated at about 10,000 people, i.e. 2,000 families.

Relief distributions (food and basic non-food items)

| | |
|---|---|
| Objective: To improve the living conditions of 2,000 families of refugees identified as the most vulnerable in the Betou, Dongou and Impfondo localities through the distribution of non-food items. | |
| Expected results | Activities planned: |
| <ul style="list-style-type: none"> The most vulnerable refugees are identified in | <ul style="list-style-type: none"> Identifying the most vulnerable refugees; |

| | |
|--|---|
| <p>the three targeted localities and beneficiaries have received basic relief items and assistance;</p> <ul style="list-style-type: none"> • The Betou, Impfondo and Dongou Red Cross committees have trained volunteers. | <ul style="list-style-type: none"> • Purchasing materials and transporting them to targeted localities; • Training Red Cross volunteers on food distribution and other relief activities techniques; • Distribution of food and non-food items to targeted beneficiaries; • Production of distribution reports. |
|--|---|

Emergency health

Objective: To improve the living conditions of 2,000 families of refugees identified as the most vulnerable in the Betou, Dongou and Impfondo localities through community-based health activities.

| | |
|---|--|
| <p>Expected results</p> <ul style="list-style-type: none"> • The refugees are sensitized on malaria and HIV/AIDS; • First aid has been given to the injured displaced population; • Health care has been given to the displaced people. | <p>Activities planned:</p> <ul style="list-style-type: none"> • Sensitization to the dangers of malaria and HIV/AIDS; • Administration of first aid assistance to the injured persons; • Treatment and support for old people. |
|---|--|

Water, sanitation, and hygiene promotion

Objective: To reduce the risks of water borne diseases and improve the sanitation system for the displaced population for the next 3 months.

| | |
|---|---|
| <p>Expected results</p> <ul style="list-style-type: none"> • Red Cross volunteers are trained on basic water and sanitation techniques; • The refugees are sensitized on hygiene rules and are following them; • Refugees have access to potable water; • The refugees are taught how to conserve and use potable water. | <p>Activities planned:</p> <ul style="list-style-type: none"> • Training Red Cross volunteers on basic water and sanitation techniques; • Sensitizing the refugees to hygiene rules and the dangers of not cleaning hands; • Supporting for the distribution of potable water; • Sensitization of the refugees to the conservation and use of potable water; • Supporting the treatment of targeted water points; • Supporting the disinfection of existing latrines, and the creation of emergency latrines; • Participating in environmental sanitation activities. |
|---|---|

How we work

All International Federation assistance seeks to adhere to the [Code of Conduct for the International Red Cross and Red Crescent Movement and Non-Governmental Organizations \(NGO's\) in Disaster Relief](#) and is committed to the [Humanitarian Charter and Minimum Standards in Disaster Response \(Sphere\)](#) in delivering assistance to the most vulnerable.

The International Federation's activities are aligned with its Global Agenda, which sets out four broad goals to meet the Federation's mission to "improve the lives of vulnerable people by mobilizing the power of humanity".

Global Agenda Goals:

- Reduce the numbers of deaths, injuries and impact from disasters.
- Reduce the number of deaths, illnesses and impact from diseases and public health emergencies.
- Increase local community, civil society and Red Cross Red Crescent capacity to address the most urgent situations of vulnerability.
- Reduce intolerance, discrimination and social exclusion and promote respect for diversity and human dignity.

Contact information

For further information specifically related to this operation please contact:

- In the **Republic of Congo**: Christian Ndinga, President of the Congolese Red Cross, Brazzaville, email: chrise_ndinga@yahoo.fr or croixrouge_congobzv@yahoo.fr phone: +242..777.04.56/+242.662.03 11;
- In **Cameroon**: Pierre Kana, Acting Regional Representative, Yaoundé, email: pierre.kan@ifrc.org; phone: +237.77.09.11.38 or +237.22.21.74.37/38; Fax: +237.22.21.74.39;
- In **Senegal**: Alasan Senghore, Director, Africa Zone, Dakar; email: alasan.senghore@ifrc.org; Phone: +221.33.869.36.41, Fax: +221.33.820.25.34; Youcef Ait-Chellouche, Disaster Management Coordinator, email: youcef.aitchellouche@ifrc.org; phone: +221.77.638.98.61
- In **Geneva**: Christine South, Operations Coordinator for West Africa; email: christine.south@ifrc.org; phone: +41.22.730.45.29.
- In **Dubai**: Peter Glenister, Regional Logistics Coordinator; Phone: +971.4.88.33 887 ext 14, Mobile: +97.150.600.91.66 email: peter.glenister@ifrc.org

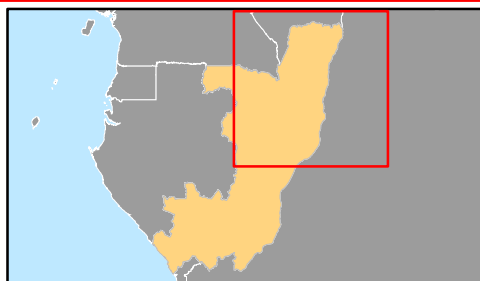
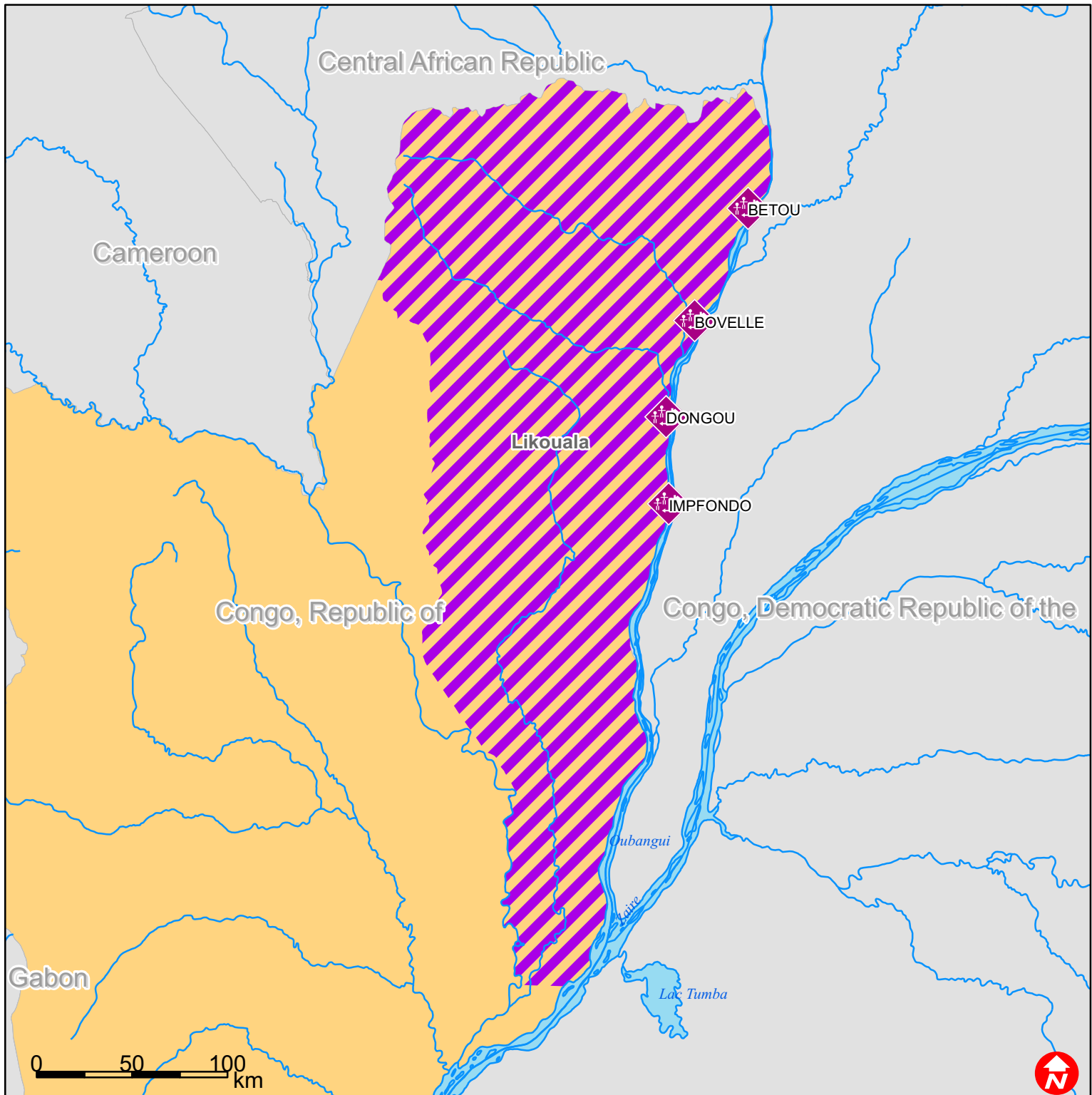
[<DREF budget and map below; click here to return to the title page>](#)



DREF OPERATION BUDGET SUMMARY

| | ORIGINAL |
|---|----------------|
| <u>RELIEF NEEDS</u> | |
| 500 Shelter | |
| 505 Construction Materials | |
| 510 Clothing & Textiles | 60,500 |
| 520 Food | |
| 523 Seeds & Plants | |
| 530 Water & Sanitation | 44,700 |
| 540 Medical & First Aid | 19,100 |
| 550 Teaching Materials | 6,000 |
| 560 Utensils & Tools | |
| 570 Other Supplies & Services | |
| total Relief Needs | 130,300 |
| <u>CAPITAL EQUIPMENT</u> | |
| 580 Land & Buildings | |
| 581 Vehicles Purchase | |
| 582 Computers & Telecom Equipment | |
| 584 Office/Household Furniture & Equip. | |
| 587 Medical Equipment | |
| 589 Other Machinery & Equipment | |
| <u>TRANSPORT, STORAGE & VEHICLES</u> | |
| 590 Storage - Warehouse | |
| 592 Distribution & Monitoring | |
| 593 Transport & Vehicles Costs | |
| <u>PERSONNEL</u> | 40,992 |
| 600 International Staff | |
| 640 Regionally Deployed Staff | 7,000 |
| 661 National Staff | |
| 662 National Society Staff | 23,715 |
| 670 Consultants | |
| <u>WORKSHOPS & TRAINING</u> | |
| 680 Workshops & Training | 10,000 |
| 680 <i>Monitoring and evaluation</i> | |
| <u>GENERAL EXPENSES</u> | |
| 700 Travel | 3,900 |
| 710 Information & Public Relations | 2,200 |
| 730 Office running costs | 10,981 |
| 740 Communication Costs | 1,500 |
| 750 Professional Fees | |
| 760 Financial Charges | 708 |
| 790 Other General Expenses | |
| <u>PROGRAMME SUPPORT</u> | |
| 599 Programme Support - PSR | 16,079 |
| Operational Needs | 117,076 |
| total (Cash & Kind) | 247,376 |



Republic of Congo: Population movement



-  Refugees sites
-  Likouala division