

DREF operation



International Federation
of Red Cross and Red Crescent Societies

Cameroon: Cholera

DREF operation n° MDRCM007
GLIDE n° EP-2009-000021-
CMR
26 October, 2009

The International Federation's Disaster Relief Emergency Fund (DREF) is a source of un-earmarked money created by the Federation in 1985 to ensure that immediate financial support is available for Red Cross and Red Crescent response to emergencies. The DREF is a vital part of the International Federation's disaster response system and increases the ability of national societies to respond to disasters.

CHF 203,419 (USD 201,584 or EUR 134,305) has been allocated from the Federation's Disaster Relief Emergency Fund (DREF) to support the Cameroon Red Cross National Society in delivering immediate assistance to some 800,000 beneficiaries. Unearmarked funds to repay DREF are encouraged.

Summary: The North and Far North regions of Cameroon are currently hit by a cholera outbreak, the first cases of which were registered in September 2009. Taking into consideration the rapid spread of the epidemics, the high lethality rate and the high population density per km² in the affected regions, Cameroon Red Cross supported by the International Federation's Central Africa Regional Representation (CARREP) has seen the need for immediate response. Red Cross volunteers are already carrying out sensitization activities in the field to help stop the spread of the epidemics. The National Society intends to assist the Ministry of Public Health by conducting social mobilization, including the sensitization of the populations, individual and collective hygiene promotion, and water disinfection as a contribution to the eradication of the epidemics. This DREF operation is therefore requested to support the National Society in carrying out all these activities that will benefit an estimated 3,838,292 inhabitants of the North and Far North regions of Cameroon exposed to the disease.

This operation is expected to be implemented over three months, and will therefore be completed by January, 2010; a Final Report will be made available three months after the end of the operation (by March, 2010).

[<click here for the DREF budget, here for contact details, or here to view the map of the affected area>](#)

The situation

Since September 2009, a cholera outbreak has been hitting Northern Cameroon. The first cases were registered in Boura, a neighbouring Cameroonian town with Nigeria. It is alleged that the epidemics has been caused by the contamination of a water source that stems in Nigeria, the Mobei water source that runs through Boura. Cases of cholera have also been registered in Nigeria in populations living along the same water source.

So far, 181 cases of cholera and 31 deaths have been registered in Far North region, i.e. a lethality rate of 17%. However, of the 181 cases, only 151 cases and eight deaths have been referred to the health centres, i.e. a lethality rate of 5%. The following table indicates the distribution of the cases registered in each health district of the Far North region of Cameroon:

Health district	Cases	Deaths	Lethality rate (%)
Bourha	50	7	14
Hina	9	3	33
Kolofata	59	3	5
Kousseri	1	0	0
Mogodé	29	9	31
Mokolo	3	2	67
Mora	30	7	23
Total	181	31	17

In the North Region, 89 cases and 16 deaths have been registered in the Bibemi, Boubaiïbi, Guider and Garoua localities.

The Far North region is the most populated region of Cameroon, with an estimated population density of 72.2 inhabitants per km², as compared to 18 inhabitants per km² in North region. There is the fear that if nothing is done urgently; the epidemics might expand rapidly with uncalculated consequences. The disease seems to be particularly fatal.

Coordination and partnerships

Presently, only the World Health Organization (WHO), which was already in the field within the framework of the anti-polio immunization campaign from 16 to 18 October, 2009 is contributing to the response, alongside with the Red Cross and the Cameroon government. The cholera case management is so far provided free of charge in Government owned health facilities. The cases managed include Cameroonian and Nigerian patients. The various actors in the field have already started providing hygiene services, including water points' chlorination, disinfection of latrines and spraying of houses.

Red Cross and Red Crescent action

So far, 30 Cameroon Red Cross volunteers have started sensitization activities in the Langui Chadian refugees' camp that is close to Bibémi, one of the sources of the epidemics. An additional 20 Red Cross volunteers are busy carrying out the same activity in Bibemi.

The needs

Selection of people to be reached: There is an urgent need to deploy more Red Cross volunteers in the two regions affected by the disease, with special emphasis on the various sources of the epidemics where the following activities need to be carried out: social mobilization, communication for the change of behaviors, improving individual and collective hygiene, and treatment of drinking water. To that effect, Cameroon Red Cross requires material and financial support to help carry out these activities alongside with the Ministry of Public Health. The materials needed include disinfection materials, 100 bottles of Crésyl, 20 sanitation kits (wheelbarrows, racks, shovels, hammers, machetes...) for the 20 affected localities, 20 sprayers, latrine improvement materials (mate, cement, plastic sheeting), 50 raincoats for protection, 100 pairs of boots, 100 pairs of gloves, 5,000 masks and 5,000 mufflers, 500 buckets with taps, posters and leaflets, 20 image boxes, 20 megaphones and batteries for local communities.

The proposed operation

Red Cross volunteers will be recruited in each of the two regions, and will be trained by the respective health district heads of services, a health officer and the respective presidents of the divisional committees of Cameroon Red Cross. The trained volunteers will then be deployed into the various affected localities for three months. Coaches will be appointed to accompany the volunteers; two supervisors from the head office in Yaoundé will be deployed in the field, on the basis of one in each of the two regions. The operation will be coordinated by the Secretary General of the Cameroon Red Cross, with the support of CARREP. The activities planned will be implemented following the Community-Based Health and First Aid (CBHFA) approach.

Emergency health

Objective: To improve the health situation of the populations of the North and Far North regions of Cameroon who are exposed to cholera epidemics.

Specific objectives:

- To sensitize the populations to the signs and symptoms of cholera and encourage them to refer to the nearest health centre;
- To promote individual and collective hygiene as a contribution to help stop the transmission chain of the epidemics;
- To improve the access of the populations to potable water and show them how to disinfect water and use adequate latrines;
- To build the public health emergency response capacities of the Red Cross local committees involved;
- To strengthen the position of the Cameroon Red Cross as auxiliary to Government.

Expected results:

- The populations of the North and Far North regions of Cameroon know the signs and symptoms of cholera and rush to the nearest health centre upon notice of the first alert.
- The populations of the North and Far North regions of Cameroon have learned how to practice simple hygiene rules. They also know how to disinfect water, particularly drinking water, use latrines and stop defecating in the open air.
- The capacities of the Red Cross divisional committees in the North and Far North regions are built in the sector of public health emergency response, especially in the area of diseases surveillance with focus on epidemics.
- The partnership between the Ministry of Health and Cameroon Red Cross is strengthened.
- The visibility of the Red Cross is improved.

Activities planned:

- Contact the beneficiaries, especially community leaders.
- Produce information, education and communication materials (posters, folders, and image boxes).
- Recruit 175 volunteers, on the basis of 75 in North region and 100 in Far North region.
- Sensitize the populations of both regions, with an average of 3 sensitization sessions per week for three months. Several strategies will be used, including door-to-door, individual interviews, educative talk groups, and mass sensitization, particularly in public squares.
- Detect and conduct suspected cases to health centres.
- Disseminate messages over local radio stations.
- Approach and involve communities in the activities' implementation.
- Purchase chemicals and disinfect water.
- Improve and disinfect family and public latrines.
- Purchase and distribute sanitation kits.
- Purchase buckets with cover and tap and promote their use for drinking water in big restaurants and for washing hands.
- Organize general sanitation sessions with the support of authorities for three months.
- Provide technical support to Cameroon Red Cross.
- Equip Cameroon Red Cross with didactic materials, and other mobile support equipment to ease access to the greater number of beneficiaries.
- Participate in the meetings of the crisis committee.
- Carry out advocacy activities before refuse disposal authorities to help intensify their activities.
- Coordinate and follow up the implementation of the operation.

DREF BUDGET SUMMARY

RELIEF NEEDS

Shelter	
Construction Materials	
Clothing & Textiles	
Food	
Seeds & Plants	
Water & Sanitation	59,268
Medical & First Aid	31,417
Teaching Materials	11,192
Utensils & Tools	
Other Supplies & Services	
Total Relief Needs	101,877

CAPITAL EQUIPMENT

Land & Buildings
Vehicles Purchase
Computers & Telecom Equipment
Office/Household Furniture & Equip.
Medical Equipment
Other Machinery & Equipment

TRANSPORT, STORAGE & VEHICLES

Storage - Warehouse
Distribution & Monitoring
Transport & Vehicles Costs 9,637

PERSONNEL

International Staff
Regionally Deployed Staff
National Staff
National Society Staff 57,320
Consultants

WORKSHOPS & TRAINING

Workshops & Training 6,505
Monitoring and evaluation

GENERAL EXPENSES

Travel
Information & Public Relations
Office running costs 9,898
Communication Costs 4,250
Professional Fees
Financial Charges 708
Other General Expenses

PROGRAMME SUPPORT

Programme Support - PSR 13,222

Total Operational Needs

101,542

Total DREF Budget (Cash & Kind)

203,419

How we work

All International Federation assistance seeks to adhere to the [Code of Conduct for the International Red Cross and Red Crescent Movement and Non-Governmental Organizations \(NGO's\) in Disaster Relief](#) and is committed to the [Humanitarian Charter and Minimum Standards in Disaster Response \(Sphere\)](#) in delivering assistance to the most vulnerable.

The International Federation's activities are aligned with its Global Agenda, which sets out four broad goals to meet the Federation's mission to "improve the lives of vulnerable people by mobilizing the power of humanity".

Global Agenda Goals:

- Reduce the numbers of deaths, injuries and impact from disasters.
- Reduce the number of deaths, illnesses and impact from diseases and public health emergencies.
- Increase local community, civil society and Red Cross Red Crescent capacity to address the most urgent situations of vulnerability.
- Reduce intolerance, discrimination and social exclusion and promote respect for diversity and human dignity.

Contact information

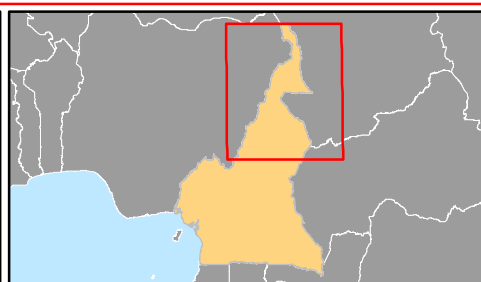
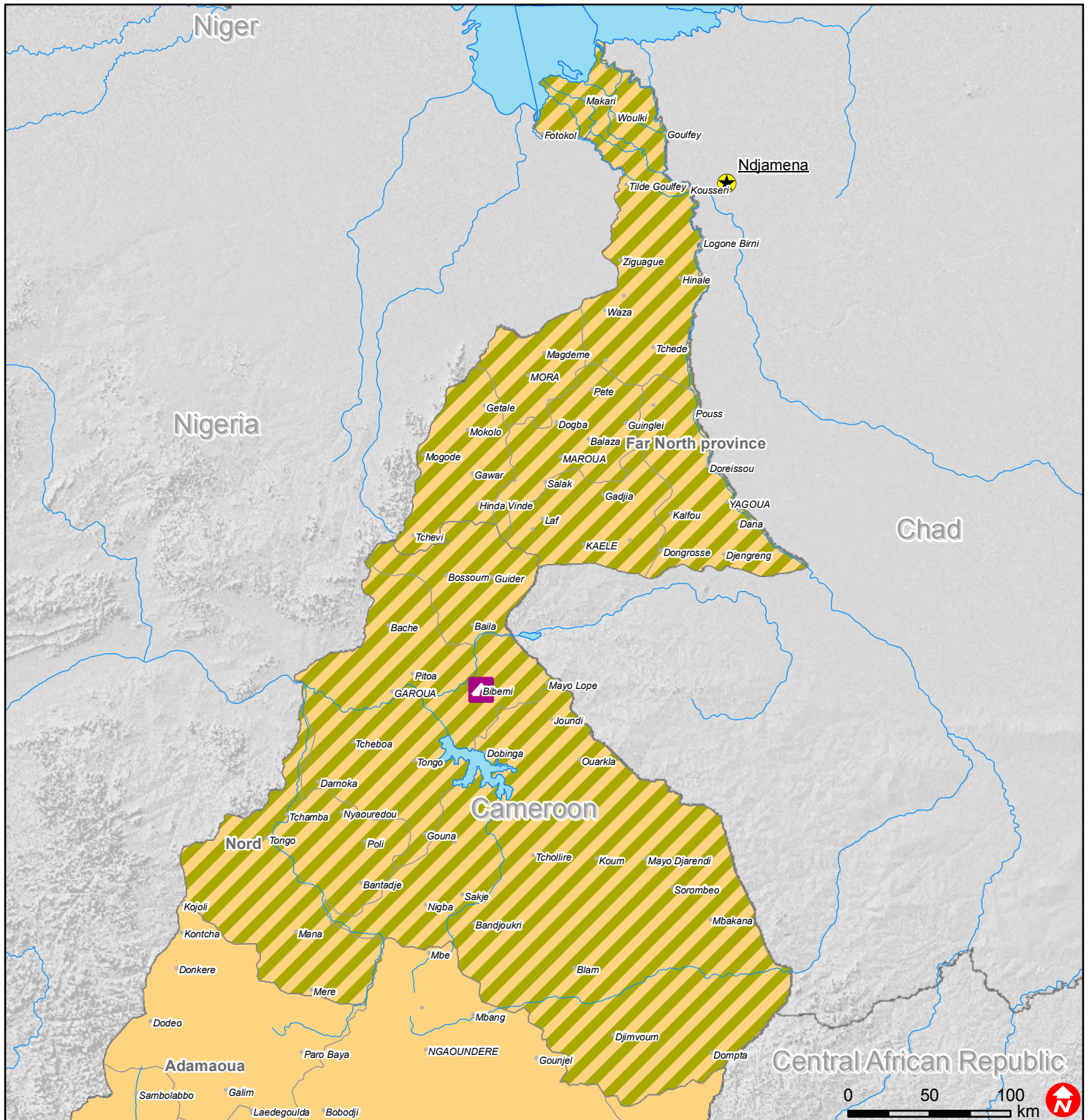
For further information specifically related to this operation please contact:

- In **Cameroon**: Nicolas Mbako, Secretary General, Cameroon Red Cross, phone: (Office) +237 22 22 41 77; (Mobile)+237 99 93 63 20 email: nicombako2002@yahoo.fr
- In **Central Africa Representation**: Javier Medrano, Central Africa Regional Representative, phone: (Office) +237 22 21 74 37; (Mobile)+237 77 09 87 89; Fax: +237 22 21 74 39; email: javier.medrano@ifrc.org
- In **West and Central Africa Sub-Zone**: Alasan Senghore, Director for Africa Zone, Dakar, Senegal, phone: +221 33 869 36 40; fax: +221 33 820 25 34; email: alasan.senghor@ifrc.org

[<DREF budget and map below; click here to return to the title page>](#)



Cameroon: Cholera



- Capitals
- Cities selection
- Cities
- Rivers
- Lakes
- Regions
- Affected areas

The maps used do not imply the expression of any opinion on the part of the International Federation of the Red Cross and Red Crescent Societies or National Societies concerning the legal status of a territory or of its authorities.
 Map data sources: ESRI, DEVINFO, International Federation - MDRCM007.mxd