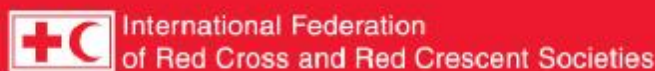


DREF operation



Ghana: Floods

DREF operation n°. MDRGH001
Glide no. FL-2009-000132-GHA
16 July, 2009

The International Federation's Disaster Relief Emergency Fund (DREF) is a source of un-earmarked money created by the Federation in 1985 to ensure that immediate financial support is available for Red Cross and Red Crescent response to emergencies. The DREF is a vital part of the International Federation's disaster response system and increases the ability of National Societies to respond to disasters.

CHF 101,314 (USD 93,290 or EUR 66,887) has been allocated from the Federation's Disaster Relief Emergency Fund (DREF) to support the Ghana Red Cross Society in delivering immediate assistance to 1,000 vulnerable targeted households. Unearmarked funds to repay DREF are encouraged.

Summary: Several hours of rain in the night of Friday 19 June, 2009 and subsequent heavy down pours along the coastal and forest belt of Ghana from 6 to 9 July, 2009 caused massive destruction of private and public properties in most communities in the western parts of Accra, Eastern, Volta, Central, Western and Ashanti Regions. Heavy rains are falling down all over the country. The floods were caused by choked and narrow gutters and the erection of structures and buildings on watercourses. The disaster coordination body in Ghana (NADMO) indicated that 19,755 people are affected.

This operation is expected to be implemented over four months, and will therefore be completed by November 2009; a Final Report will be made available three months after the end of the operation (by February, 2010).

[<click here for the DREF budget,](#)
[here for contact details,](#)
[or here to view the map of the affected area>](#)



The situation

Several hours of rain during the night of Friday 19 June, 2009 and subsequent heavy down pours along the coastal and forest belt of Ghana from 6 to 8 July, 2009 caused massive destruction of private and public properties in most communities in the western parts of Accra, Eastern, Volta, Central, Western and Ashanti Regions. At the time of writing this bulletin the rains continue to fall all over the country. The floods were caused by choked and narrow gutters and erection of structures and buildings on water courses.

Areas and locations affected:

- In Accra, the affected communities are: Mallam Junction, Sakaman, Awoshie, Sanata Maria, Odorkor, Darkuman Junction, and Kaneshie; from 1st Traffic Light to Mpramprom.

- In the Western Region the affected communities are: Sekondi Takoradi, Sanzule and Enchi. Coastal towns like Ellembelle and Jomoro were flooded with large portions submerged in water.
- In Central Region: Kasoa, Apam, Mfantsiman and Cape are flooded.
- In Coast Volta Region the Keta Basin is hit.
- In the Eastern Region the following locations are affected: Kpong, Atimpoku and some communities lying close to the Volta River Ashanti Region: Atonsu and Kordie.

Disaster effects

- Property worth about 265,186,423 millions of cedi was destroyed according to government authorities. Many of the residents lost their personal belongings as they were carried away by the flood waters.
- Nationwide statistics from NADMO indicate that 19,755 people are affected of which 6,586 are children.
- The flood waters removed asphalt surfaces on some roads creating vehicular traffic and making most of the roads impassable.
- Shops, garages and many houses were inundated with water. At the time of this report the water has not receded.
- The Health authorities have confirmed 16 deaths: seven in Accra; three in Kumasi; two in Takoradi and one in Cape Coast and three others.

Coordination and partnerships

The Ghana Red Cross Society is working in close cooperation with the National Disaster Management Organization (NADMO), UNOCHA, UNHRD and Coalition of NGOs. The Ghana Red Cross is also coordinating with government agencies such as the Regional Coordinating Councils, Metropolitan, Municipal and District Assemblies, the Ghana Police Service as well as traditional rulers.

Action by the Government

In Accra, NADMO sent a rescue team from the 48 Engineers Regiment of the Ghana Armed Forces to rescue about 20 people trapped in their roof tops at Tema. In one community the rescue team had to break walls and two houses built on water ways to rescue people who were marooned. In Accra again officials of NADMO led by the National Coordinator, the Greater Accra Regional Minister, Deputy Minister of Roads and Highways and the Mayor of Accra visited the areas to assess the extent of damage. In the other five Regions, namely Volta, Eastern, Central, Western and Ashanti, officials of NADMO and the Metropolitan, Municipal and District Assemblies visited the areas to carry out on the spot visual inspection. NADMO distributed tents, blankets and foam mattresses. NADMO and city officials decided after the visit to pull down unapproved buildings and structures on water ways. The President of the Republic has declared his full support for any action intended to remove all structures contributing to perennial flooding and the resultant loss of lives and property across the country.

Red Cross and Red Crescent action

A team from the Regional office and the Headquarters of the Ghana Red Cross led by the Disaster Management Coordinator visited the affected communities to assist in search and evacuation of people who might have been trapped and could not escape. The Volunteers provided first-aid services, trauma counselling and health education to the affected people and at the same time engaged in a massive community education on the need to avoid indiscriminate dumping of refuse into gutters and building on water courses. Some 120 volunteers are conducting Emergency Needs Assessment in the affected regions.

The needs

Flood intensity (water velocity) damaged poorly built houses and washed away personal belongings of vulnerable groups. Indications from the on-going assessment make clear that immediate needs include: materials for reconstruction of destroyed houses; food & NFIs like shelter materials, blankets, kitchen sets and potable water for affected households.

Assessment is still ongoing as there are more areas being affected as a result of the continuous rain fall and there might be changes in the number of people affected and the needs.

The proposed operation

The National Society will be supported by a RDRT member in conducting an extended assessment, liaise with other humanitarian actors and advise Red Cross and Red Crescent response strategy. In the meantime the National Society will start the distribution of non-food items to 1,000 families of the most vulnerable households affected by floods in the Accra area. All items taken from the regional stock will be replenished.

The Ghana Red Cross Society has three trained RDRT members who will work together with a deployed RDRT member to monitor the situation according to the needs, the intervention of partners and will advise on appropriate future response and recovery strategy if needed.

Preliminary support
<p>Objective : Support Ghana Red Cross to conduct rapid assessment, distribute relief items to the most vulnerable, liaise with partners and advise Red Cross and Red Crescent response and recovery strategy</p>
<p>Activities planned :</p> <ul style="list-style-type: none"> • Conduct rapid assessment; • Distribute relief items to cover the immediate needs of the most vulnerable: 500 shelter kits for families for which houses have been severely damaged or destroyed, 500 tarpaulins to whom their houses are damaged but still living inside; 2,000 blankets; 1,000 kitchen sets; 4,000 water purification tablets; 4,000 pieces of soap and 2,000 jerry cans;. • Coordinate with other partners and Government authorities; • Advise on RC&RC future response and recovery strategy.

The above mentioned items are estimated according to a first rapid assessment. The quantity could be changed or adapted to the final assessment and/or according to the other partners' intervention, mainly the Swiss Red Cross.

APPEAL BUDGET SUMMARY

DREF NAME : DREF Ghana FLOODS

ORIGINAL

RELIEF NEEDS

Shelter	
Construction Materials	
Clothing & Textiles	
Food	
Seeds & Plants	
Water & Sanitation	
Medical & First Aid	
Teaching Materials	
Utensils & Tools	
Other Supplies & Services	80,000
Total Relief Needs	80,000

CAPITAL EQUIPMENT

Land & Buildings
Vehicles Purchase
Computers & Telecom Equipment
Office/Household Furniture & Equip.
Medical Equipment
Other Machinery & Equipment

TRANSPORT, STORAGE & VEHICLES

Storage - Warehouse
Distribution & Monitoring 2,000
Transport & Vehicles Costs 750

PERSONNEL

International Staff
Regionally Deployed Staff
National Staff
National Society Staff 3,012
Consultants

WORKSHOPS & TRAINING

Workshops & Training
Monitoring and evaluation

GENERAL EXPENSES

Travel 8,400
Information & Public Relations
Office running costs 250
Communication Costs
Professional Fees 250
Financial Charges
Other General Expenses

PROGRAMME SUPPORT

Programme Support - PSR 6,652

Total Operational Needs 21,314

Total Appeal Budget (Cash & Kind) 101,314

How we work

All International Federation assistance seeks to adhere to the [Code of Conduct for the International Red Cross and Red Crescent Movement and Non-Governmental Organizations \(NGO's\) in Disaster Relief](#) and is committed to the [Humanitarian Charter and Minimum Standards in Disaster Response \(Sphere\)](#) in delivering assistance to the most vulnerable.

The International Federation's activities are aligned with its Global Agenda, which sets out four broad goals to meet the Federation's mission to "improve the lives of vulnerable people by mobilizing the power of humanity".

Global Agenda Goals:

- Reduce the numbers of deaths, injuries and impact from disasters.
- Reduce the number of deaths, illnesses and impact from diseases and public health emergencies.
- Increase local community, civil society and Red Cross Red Crescent capacity to address the most urgent situations of vulnerability.
- Reduce intolerance, discrimination and social exclusion and promote respect for diversity and human dignity.

Contact information

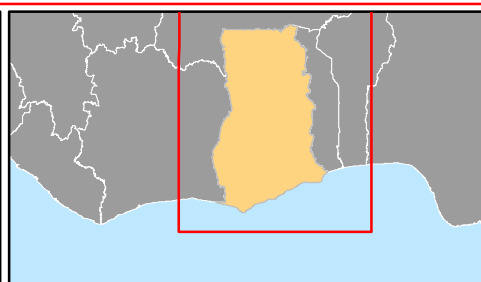
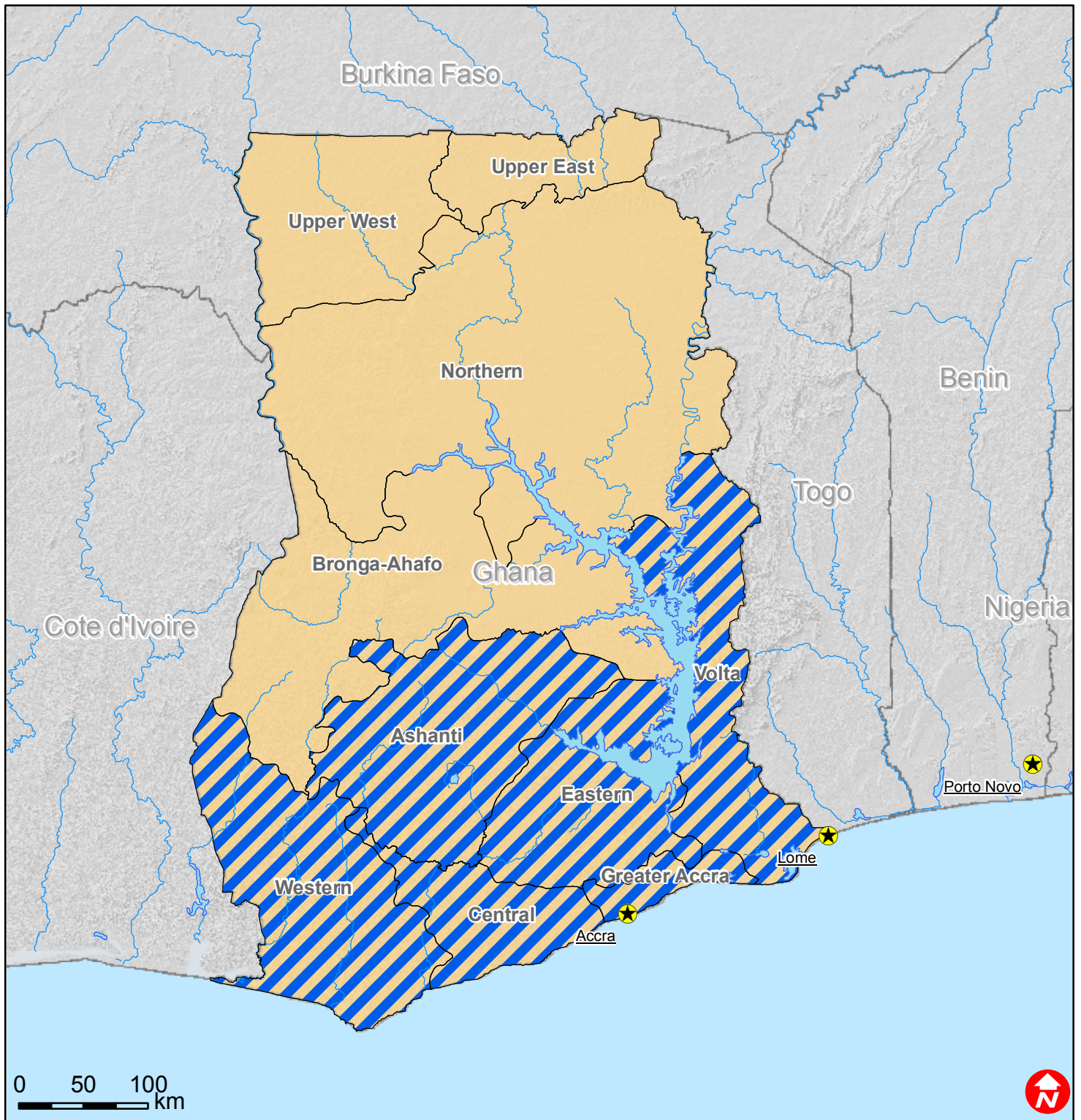
For further information specifically related to this operation please contact:

- In **Ghana**: Andrews Frimpong, Secretary General Ghana Red Cross Society, Accra; email : redcrossghana@yahoo.co.uk; phone : +233.244475805
- In **Nigeria**: Thierry Coppens, Regional Representative, West Coast Regional Office, Abuja, email: thierry.coppens@ifrc.org, Phone: +234.(0).9.870.39.24;
- In **Senegal**: Alasan Senghore, Federation Head of West and Central Africa Zone Office, Dakar, email: alasan.senghore@ifrc.org; Phone: +221.33.869.36.41, Fax: +221.33.820.25.34; Youcef Ait-Chellouche, Disaster Management Coordinator, email: youcef.aitchellouche@ifrc.org, phone: +221.77.638.98.61
- In **Geneva**: Christine South, Operations Coordinator for West Africa, email: christine.south@ifrc.org; phone: +41.22.730.45.29.
- In **Dubai**: Peter Glenister, Regional Logistics Coordinator, Phone: +971.4.88.33 887 ext 14 , Mobile: +97.150.600.91.66 email: peter.glenister@ifrc.org

[<DREF budget; map below; click here to return to the title page>](#)



Ghana: Floods



- ★ Capitals
- Rivers
- Lakes
- Regions
- ▨ Affected areas