

DREF operation



International Federation
of Red Cross and Red Crescent Societies

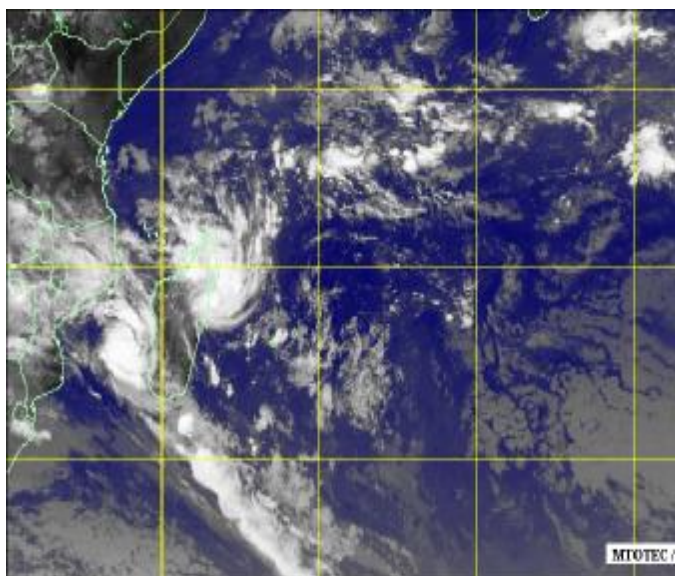
Madagascar: Tropical cyclones

DREF n° MDRMG004
GLIDE n° TC-2009-000019-MDG
TC-2009-000026-MDG
6 February 2009

The International Federation's Disaster Relief Emergency Fund (DREF) is a source of un-earmarked money created by the Federation in 1985 to ensure that immediate financial support is available for Red Cross and Red Crescent response to emergencies. The DREF is a vital part of the International Federation's disaster response system and increases the ability of national societies to respond to disasters.

CHF 244,043 (USD 208,782 or EUR 162,122) has been allocated from the Federation's Disaster Relief Emergency Fund (DREF) to support the National Society in delivering immediate assistance to some 5,000 families. Unearmarked funds to repay DREF are encouraged.

Summary: Two tropical events hit Madagascar in succession between 18 and 24 January 2009. These caused extensive damage and flooding in three regions across the island, affecting more than 50,000 people and leaving more than 4,000 people homeless. Immediately after the cyclone political unrest occurred in the country. The unrest has resulted in injuries and extensive damage to property, and created further challenges to the ability of humanitarian agencies to mobilize an effective response to the areas affected by the cyclones, leaving tens of thousands of people without assistance



Satellite image of Tropical Storm Eric (east of Island) and Tropical Cyclone Fanale (West of Island) on 19th January 2009:

The Madagascar Red Cross Society (MRCS) has mobilized volunteers in all affected areas to distribute basic relief items and manage camps for the displaced. MRCS branches in urban areas are also assisting victims of the political violence. This allocation from the Federation's DREF will support the National Society to procure mosquito nets and school kits, and to transport and distribute available stocks to meet the needs of 5,000 of the worst affected families in 3 regions. For this reason, the transport component of the attached budget is relatively high. The operational environment is difficult due to the evolving political situation in the country, making damage and needs assessments particularly challenging,

This operation is expected to be implemented over 4 months, and will therefore be completed by 5 June 2009; a Final Report will be made available three months after the end of the operation (by 5th September 2009).

[<click here for the DREF budget, here for contact details; here to view the map of the affected](#)

The situation

Tropical storm "Eric" hit the east coast of the country on 18 January 2008, delivering heavy rain and winds up to 95km/h affecting 8 districts. Although the storm itself only caused limited damage, subsequent flooding has affected considerable areas, particularly in Mandritsira District in Sofia Province (see attached map).

Tropical Cyclone Fanele followed two days later, hitting the west coast of Madagascar with winds of up to 210km/h and crossing 6 regions right across the island. The worst affected region was Menabe (West coast) with considerable wind and flood damage in the town of Morondova.

Preliminary assessments by the government show that overall there were 9 deaths, 33 injuries and over 54,802 people affected and 4,102 without shelter across three regions of Menabe, Sofia and Analanjirofo.

Assessments by the Malagasy Red Cross indicate that 80% of the town of Morondova was flooded and 50% of the houses damaged. In the district of Manja, 20% of the houses are damaged with an estimated 774 families displaced. Detailed assessments are ongoing but some rural areas are still inaccessible due to damaged bridges and roads. Damage to fragile huts in all rural areas is expected to be considerable.

On 24 January 2009 political instability in the country caused protests and unrest in the capital of Antananarivo and other major cities. Shops and property were looted, including the Malagasy Red Cross Society (MRCS) warehouse in Antsohiy. The civil unrest continues and people have been told to remain at home for the foreseeable future. MRCS branches in the capital and other cities have been assisting victims of the violence.

Under the current circumstances the MRCS is finding it difficult to operate normally, but the National Society continues to monitor the ongoing relief effort in the cyclone-affected regions and is requesting support from the Federation Disaster Relief Emergency Fund (DREF) to replenish stocks and support branches and volunteers in ongoing assessments and relief item distribution efforts.

A third tropical storm that had been approaching Madagascar and was on a track to hit the east coast of the island by the weekend has now veered off towards the south and is no longer considered a threat.

Coordination and partnerships

The Government Bureau National de Gestion des Risques et Catastrophes (BNGRC) is coordinating the response. The national contingency plan has been activated. The MRCS's Head of Disaster Management plays an active role in the disaster response committee. Clusters for coordination of the international response have been established and the MRCS is actively participating in a WASH cluster as well as leading the shelter cluster on behalf of the Federation. The Government response has been complicated by the political developments in the country.

The MRCS contingency plan is structured on an escalating response: if the MRCS is able to respond within its own human and financial resources, it will act alone; if the scale of the disaster exceeds the MRCS capacity it should first ask for support from French Red Cross's Plateforme d'Intervention Regionale Ocean Indien (PIROI); if the PIROI stand by capacity is not adequate, the Federation can be asked to launch an International Appeal. Based on preliminary assessments the MRCS believes it has the capacity to respond to this disaster without direct regional or international response.

The Federation is working closely with French Red Cross/PIROI to ensure a coordinated support to the MRCS. PIROI maintains stocks in Madagascar consisting of two 'Kit 5', each designed to assist 5,000 people. The Federation's delegation for Indian Ocean Island is in regular contact with ICRC during the escalation of political violence and instability.

Red Cross and Red Crescent action

The MRCS's head of disaster management is taking part in rapid assessments. Ninety volunteers were mobilized to undertake an assessment in the town of Morondava where there was considerable damage to

buildings and municipal services. MRCS volunteers were initially managing 7 internally displaced persons (IDP) sites around the town of Morondava. There are now 17 camps accommodating 2,128 persons, and MRCS volunteers are responsible for food and relief distributions as well as camp management in some areas. The volunteers are being trained on camp management, food distribution, psychological care, food storage, and management.

Volunteers and branch members in other areas are distributing relief items (eg. hygiene kits, tents and kitchen sets) from pre-positioned stocks. These are now exhausted and/or looted, and the MRCS is requesting replacement stocks from PIROI and the Federation.

A task force has been established at the MRCS headquarters to collect information and prepare equipment and materials for national response teams. Regional Disaster Response Team (RDRT)-trained personnel have been deployed to train volunteers and lead detailed assessments in Morondava and Mandritsara.

The needs

Preliminary Damage Assessment

District, Province	Damage/Impact
Mandritsara, Sofia	878 households displaced into temporary centres. Many areas inaccessible due to damaged main roads in the south and north.
Port-Berger, Sofia	No information (assessment on going)
Manja, Menabe	20% houses without roofs. Floods waters now receding
Ihorombe, Menabe	129 people affected, including 116 displaced. Houses and 2 schools damaged
Toliary and South East, Menabe	No damage reported
Miandrivazo, Menabe (including Morondava)	9471 people displaced. 80% of district flooded

Immediate Needs: the MRCS anticipates that more detailed information will be available from the field shortly. The political instability has made communication difficult, but the MRCS is managing to maintain daily contact with its regional coordinators in the affected areas. Preliminary reports from the field indicate that the flooding and storm damage destroyed many household's possessions so affected families cannot prepare meals or collect water. Water supplies (mainly open wells) are polluted so that there is high risk of water borne diseases and malaria.

Critical supplies needed are as follows:

- Water and sanitation equipment.
- Mosquito nets.
- Plastic sheeting for temporary shelter.
- First Aid Kits and other medical supplies.
- Food items.

In addition the shelter cluster has identified the following priority activities:

- Repair and reconstruction of damaged huts.
- Training on cyclone resistant construction.
- Pilot project to build cyclone resistant housing.

Beneficiary selection: Relief efforts are focused on 5 districts in Menabe and Sofia Regions. Based on the preliminary figures, the MRCS is planning to provide assistance to 5,000 of the worst affected families in the following locations:

- 3,300 families in Morondava.
- 500 families in Manja.
- 1,000 families in Mandritsara.
- 200 families in Port-Bergé and Mampikony.

Detailed beneficiary selection will be carried out following planned or ongoing assessments in all 5 areas.

The proposed operation

The MRCS has already mobilized some of the pre-positioned stock it held in strategic locations and will utilise additional stocks for the planned relief distribution. This stock was purchased by PIROI and/or IFRC during previous Emergency operations and MRCS expect to be able to replenish it through planned appeals for this cyclone response. Additional items not held in stock (Mosquito nets and school kits) are being purchased through this DREF operation.

Access to safe water has been identified as a priority need following extensive flooding and the potential risk for outbreaks of water borne diseases. The National Society plans to carry out an extensive well disinfection exercise alongside a hygiene and sanitation campaign. The exact target numbers for this activity will be identified following assessments but it is likely to cover a large area and therefore require mobilization of a high number of volunteers. The MRCS is also mobilizing 2 watsan supply kits provided by PIROI. These will be deployed to critical areas based on the findings of ongoing assessments. Other watsan needs (e.g. latrines) are being covered by other humanitarian actors as agreed in the WASH cluster.

The costs for deployment of a RDRT team is included in the operation budget. However the decision whether or not to deploy this surge capacity will be made by the MRCS, in consultation with the Federation and PIROI, after the assessment findings and detailed needs are known.

Relief distributions (basic non-food items)

Objective: Essential non-food items are distributed to 5,000 target families in Mandritsara, Manja, Morondava, Port-Berger and Mampikony districts following assessment and targeting focusing on the most vulnerable in each area.

Activities planned::

- Mobilize, train and deploy volunteers to conduct assessment in five districts.
- Develop beneficiary targeting strategy and registration system to deliver intended assistance.
- Train and mobilise volunteers for distribution of Food and NFIs.
- Procure (or mobilize) and distribute mosquito nets, 5,000 kitchen sets, 5,000 hygiene kits, 5,000 school kits and 5,000 construction tool kits for the rehabilitation of houses¹.
- Monitor and evaluate the relief activities and provide reporting on relief distributions.

Expected result: affected households can construct temporary shelter and have means to prepare food and collect water.

Water, sanitation, and hygiene promotion

Objective: Contribute to the provision of safe water and reduction of disease through the establishment of emergency water supplies and rehabilitation of existing wells in critical locations of Morondava and Mandritsara districts².

Activities planned:

- Assess the existing coverage and identify critical gaps in water supply.
- Mobilize PIROI water supply equipment to provide safe water in critical areas (IDP camps).
- Clean and disinfect affected wells in 2 districts.
- Carry out hygiene and sanitation awareness campaign to reduce risk of water and vector borne disease.
- Distribute ITN (mosquito nets) to displaced families.

Expected result: disease transmission is prevented during the initial stages of the emergency.

How we work

All International Federation assistance seeks to adhere to the [Code of Conduct for the](#)

¹ The list of essential NFI items for distribution is based on experience from Cyclone Ivan in 2008. This will be refined following the detailed needs assessment in each area. Some of these items are being distributed from existing stocks which will be replenished through bi-lateral and/or Federation appeal.

² Exact target numbers of wells for rehabilitation and households to be provided with safe water will be established after detailed assessments are completed.

International Red Cross and Red Crescent Movement and Non-Governmental Organizations (NGO's) in Disaster Relief and is committed to the Humanitarian Charter and Minimum Standards in Disaster Response (Sphere) in delivering assistance to the most vulnerable.

The International Federation's activities are aligned with its Global Agenda, which sets out four broad goals to meet the Federation's mission to "improve the lives of vulnerable people by mobilizing the power of humanity".

Global Agenda Goals:

- Reduce the numbers of deaths, injuries and impact from disasters.
- Reduce the number of deaths, illnesses and impact from diseases and public health emergencies.
- Increase local community, civil society and Red Cross Red Crescent capacity to address the most urgent situations of vulnerability.
- Reduce intolerance, discrimination and social exclusion and promote respect for diversity and human dignity.

Contact information

For further information specifically related to this operation please contact:

In Madagascar: Ratsimbazafy Fanja Nantenaina, Secretary General, Malagasy Red Cross Society, Antananarivo; email: crm@wanadoo.mg; telephone + 261.20.222.21.11; fax + 261.20.226.67.39

• **In Mauritius:** Susanna Cunningham, Head of Sub-Zone Office for the Indian Ocean Islands, Mauritius; email: susanna.cunningham@ifrc.org; telephone + 230.454.69.34; mobile + 230.252.08.55

• **In Kenya:** Nancy Balfour, Disaster Management Coordinator Eastern Africa Zone, Nairobi; email: nancy.balfour@ifrc.org; telephone: +254.20.283.5208; fax +254.20.271.2777

• **In Kenya:** Asha Mohammed. Head of Eastern Africa Zone, Nairobi; Asha.mohammed@ifrc.org; telephone: +254.20.283.5235; fax +254.20.271.2777

• **In Geneva:** John Roche, Federation Operations Coordinator for Eastern and Southern Africa regions; phone: +41.22.730.4400; email: john.roche@ifrc.org

[<DREF budget and map below; click here to return to the title page>](#)

DREF OPERATION BUDGET SUMMARY

Annex 1

Madagascar; Tropical Storm & Tropical Cyclone

DREF n° MDRMG004

BUDGET CHF**RELIEF NEEDS**

Shelter	
Construction Materials	
Clothing & Textiles	
Food	
Seeds & Plants	
Water & Sanitation	
Medical & First Aid - Mosquito nets	15,625
Teaching Materials	2,500
Utensils & Tools	
Other Supplies & Services - school kits	31,250
Other Supplies & Services - cooking supplies for camps	3,313
Total Relief Needs	49,375

CAPITAL EQUIPMENT

Land & Buildings
Vehicles Purchase
Computers & Telecom Equipment
Office/Household Furniture & Equip.
Medical Equipment
Other Machinery & Equipment

TRANSPORT, STORAGE & VEHICLES

Storage - Warehouse	
Distribution & Monitoring	39,475
Transport & Vehicles Costs	58,536

PERSONNEL

International Staff	
Regionally Deployed Staff	8,000
National Staff	5,588
National Society Staff	37,062
Consultants	

WORKSHOPS & TRAINING

Workshops & Training

GENERAL EXPENSES

Travel	
Information & Public Relations	
Office running costs	25,265
Communication Costs	4,879
Professional Fees	
Financial Charges	
Other General Expenses	

SERVICE FEES

Service Fees

PROGRAMME SUPPORT

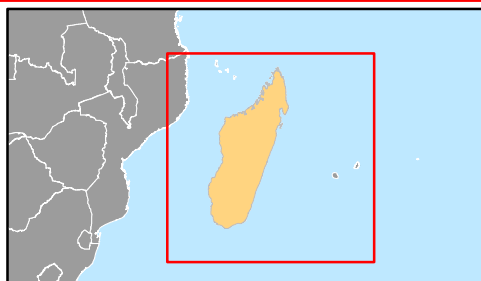
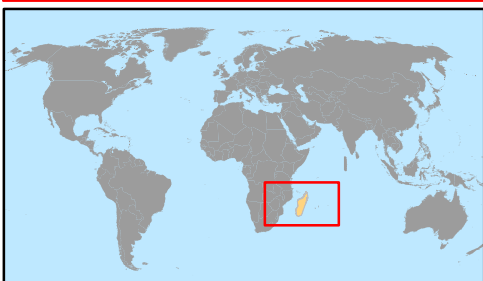
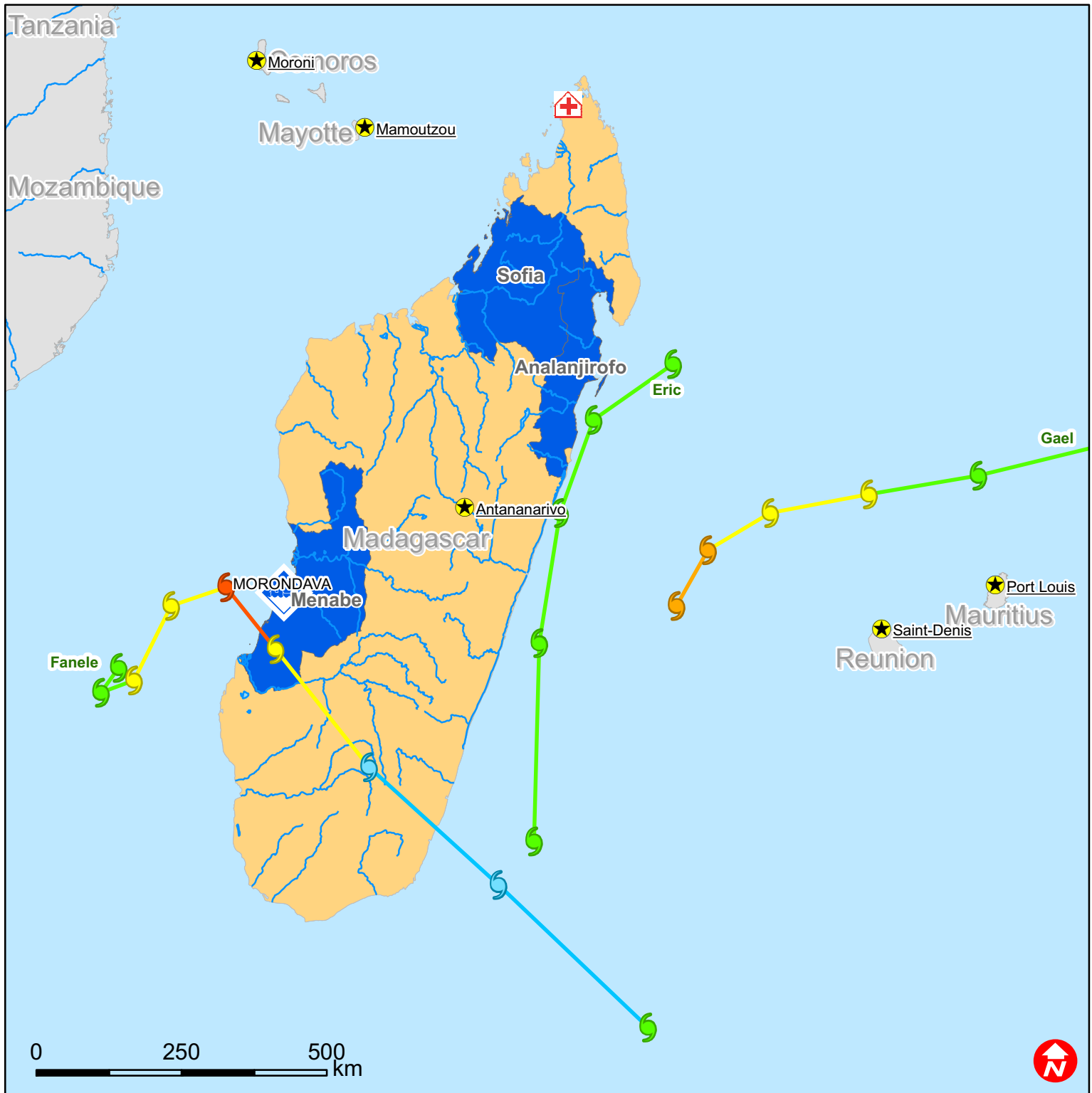
Programme Support - PSR	15,863
-------------------------	--------


Total Operational Needs **194,668**

DREF ALLOCATION **244,043**



Madagascar: Tropical cyclones



-  Malagasy Red Cross warehouse in Antsohihy
-  Floods
-  Worst affected regions

The maps used do not imply the expression of any opinion on the part of the International Federation of the Red Cross and Red Crescent Societies or National Societies concerning the legal status of a territory or of its authorities.

Map data sources: ESRI, DEVINFO, SALB, UNISYS, International Federation - MDRMG004.MXD