

DREF operation



International Federation
of Red Cross and Red Crescent Societies

Sudan: Khartoum State Floods

DREF operation n° MDRSD007

GLIDE n° FL-2009-000166-SDN

4 September 2009

The International Federation's Disaster Relief Emergency Fund (DREF) is a source of un-earmarked money created by the Federation in 1985 to ensure that immediate financial support is available for Red Cross and Red Crescent response to emergencies. The DREF is a vital part of the International Federation's disaster response system and increases the ability of national societies to respond to disasters.

CHF 244,663 (USD 230,814 or EUR 163,109) has been allocated from the Federation's Disaster Relief Emergency Fund (DREF) to support the National Society in delivering immediate assistance to some 15,000 beneficiaries. Unearmarked funds to repay DREF are encouraged.

Summary: Khartoum State has witnessed a heavy downpour of rain lasting for 6 hours from 5 to 11 am on 26 August 2009. Rainfall during this period averaged between 42 to 71mm which has resulted in extensive flooding. Most of the affected areas are informal settlements around Khartoum.



Some of the 21,000 homes damaged from the recent floods.

According to the Government Civil Defence Authority the flooding has directly caused the death of 4 persons. The Sudanese Red Crescent Society (SRCS), in collaboration with other agencies, estimated that 10,139 houses have been partially damaged or destroyed (as of 27 August 2009) however this figure is likely to increase over the following days.

The flooding has occurred mainly in or around Khartoum, Gazira, Blue Nile, Northern State, Kassala, North Kordufan and Sennar.

This operation is expected to be implemented over 3 months, and will therefore be completed by 31 November 2009; a Final Report will be made available three months after the end of the operation (by 2 March 2010).

[<click here for the DREF budget, here for contact details or here to view the map of the affected area>](#)

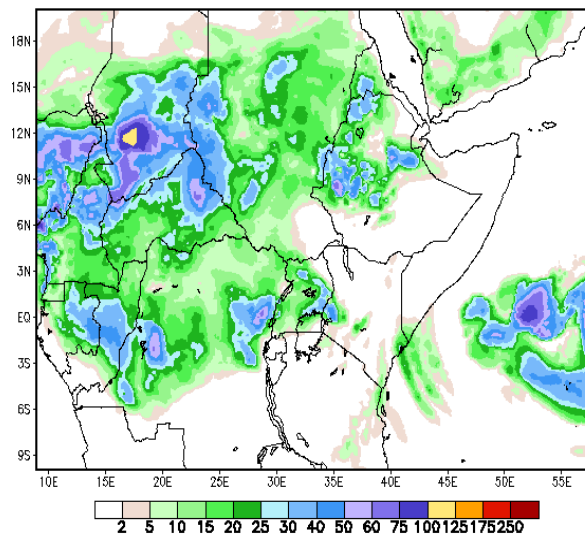
The situation

In Khartoum State nature of the disaster is of two types – heavy rainfall combined with flash floods in areas with blocked or absent drainage systems; and damage to mud houses and squatter type housing on river banks, combined with damage from heavy rains. Khartoum State is comprised of main 3 cities (Khartoum,

Khartoum Bahri and Omdurman), and administratively divided into 7 localities with a total population of 8 million people. All 7 localities were affected by the rain and floods.

Assessment is on-going by Sudanese Red Crescent Society emergency response teams in all affected areas along side with community committees. Initial assessments in Khartoum have indicated a high level of damage due to flash flooding with approximately 2,000 houses damaged, of which 500 are seen as severely damaged. In El Obeid, around 1,556 families are estimated to be affected by flooding with 485 houses destroyed. In Sennar, flash floods have damaged 325 families.

As forecasted by the Sudan Meteorological Authority (SMA), high probability of heavy rainfall in occurrence and in value is expected over Gezera, Kordofan, Darfur, Eastern states, White Nile Butana plains and Khartoum State. This was confirmed by the ETA model and ended on 29 August 2009, the model also indicates likelihood of heavy to moderate rainfall over Ethiopian and Eritrean plateau. It also indicates heavy to moderate rainfall over Gedaref, Kassala, Sennar, Blue Nile, Upper Nile, White Nile, Greater Kordofan, Greater Darfur, West Bahr Al-Ghazal state, as well as Butana plains.



Regional precipitation the week of 30 August 2009

Coordination and partnerships

The SRCS branches in the flood-prone areas have been active and are working closely with State government, humanitarian agencies and local communities on mobilization, logistics and relief assistance. The Government of Sudan has established a coordination mechanism known as the Flood Task Force (FTF). The SRCS is a member of this emergency working group at state level. The SRCS's headquarters in Khartoum is also working closely with the Ministry of Irrigation, Humanitarian Aid Commission, Meteorological Department and other stakeholders in monitoring the weather conditions in the country.

The International Committee of the Red Cross (ICRC) and Participating National Societies (PNS) are participating in the Movement coordination mechanisms. The ICRC has provided 2,000 family relief kits to the operation and discussions on areas for additional support are taking place with PNSs.

The United Nations Joint Logistics Centre (UNJLC) has expressed its willingness to cooperate with SRCS delivering relief items despite its limited stock in Khartoum as the latter is the main partner to UNJLC in non food items (NFIs) distribution.

Red Cross and Red Crescent action

The SRCS has formed a Floods Task Force (FTF) to mobilize resources and coordinate response activities. The FTF consists of key National Society staff and representatives of the Federation's delegation. The SRCS has updated its Floods Contingency Plan 2009 and produced a related Plan of Action to deal with immediate needs which will shortly be shared with Movement partners. The SRCS state branch emergency teams conducted the initial assessment in Khartoum and other affected states. The SRCS is deploying its emergency response teams to conduct flood damage assessment in the affected areas in Khartoum.

This DREF is intended to kick-start the response activities and support comprehensive assessments to determine the extent and magnitude of the damage and the relief support required in the affected communities. The two will take place concurrently. The findings of the assessment will form the basis of an Emergency Appeal which will be updated or adjusted as the operation unfolds.

From the assessments undertaken to date, it became apparent that the priority, among the immediate needs of the affected population is improving shelter conditions. Many families who have been evacuated from flooded areas have not been provided with alternative shelter arrangements.

The National Society is establishing an emergency operations centre at their headquarters equipped with communications equipment to be used as a training centre, meeting room and coordination centre for the

operation. Shortwave radio communications will be setup to communicate around the city and between headquarters and flooded internally displaced persons (IDP) camps.

The needs

All person affected by the floods will be targeted. Their immediate needs are clean drinking water, shelter, emergency health care and sanitation.

State	Locality	Affected Area	Residential Houses Damage		
			Totally	Partially	Total
Khartoum	Kerrari	Alfateh 1 squ. 41,38,40 Afateh 2 Alyrmok section (75, 76, 77, 78, 86, 88) Afateh 3 squ. (59, 51, 52, 34, 43, 38) Afateh 2 squ. (61) Harat (62, 98, 54, 2,46, 53, 57,59, 37)	4,606	0	4,606
		Omdurman	Salha	69	64
	Ombada	Hara 14	43	0	43
	Jabal Awlia	Suba Alhila, Suba Alaaota , Suba Aradi (squ.1 to 12), Alsalama/janob squ 1,2,4,5, Mayo/Mandella, Mayo, Terreah and Alkalakla Alguba	8,149	6,740	14,889
	Sharg Alnil	Haj yousif , squ .2, Ed Babiker/Hay Alnur, Ed Babiker/Tawidat, Ed Babiker/Abaoga, Alkiriab , Ram Allah, Albashir and Algeref	836	1251	2,087
Total			13,703	8,055	21,758

The proposed operation

The planned response activities include the distribution of plastic sheeting, mosquito nets and soap for affected households in Khartoum state; in addition to health care, and water and sanitation (health education and hygiene promotion). Approximately 1,000 volunteers in the affected areas will support the implementation of various activities and more will be mobilized as necessary.

Relief distributions (food and basic non-food items)
Objective: To provide immediate shelter and relief assistance to 3,000 households (15,000 beneficiaries) affected by heavy rain in Khartoum State.
Activities planned: <ul style="list-style-type: none"> Continuation of assessments in heavy rain affected areas of Khartoum State. Provide assessment teams of volunteers with necessary support and equipment. Mobilize volunteers and provide them with necessary tools in the targeted areas for various response activities including distribution of relief items. Procure and distribute 3,000 plastic sheeting for the affected communities. Procure and distribute 6,000 mosquito nets, for affected communities.

Emergency health
Objective: To meet the basic health needs of 3,000 households (15,000 beneficiaries) affected by floods in Khartoum State.
Activities planned: <ul style="list-style-type: none"> Conduct assessment of health needs of the affected population. Procure and distribute 11,250 tones of soap. Organize health education and hygiene promotion activities among the affected and at high risk population.

How we work

All International Federation assistance seeks to adhere to the [Code of Conduct for the International Red Cross and Red Crescent Movement and Non-Governmental Organizations \(NGO's\) in Disaster Relief](#) and is committed to the [Humanitarian Charter and Minimum Standards in Disaster Response \(Sphere\)](#) in delivering assistance to the most vulnerable.

The International Federation's activities are aligned with its Global Agenda, which sets out four broad goals to meet the Federation's mission to "improve the lives of vulnerable people by mobilizing the power of humanity".

Global Agenda Goals:

- Reduce the numbers of deaths, injuries and impact from disasters.
- Reduce the number of deaths, illnesses and impact from diseases and public health emergencies.
- Increase local community, civil society and Red Cross Red Crescent capacity to address the most urgent situations of vulnerability.
- Reduce intolerance, discrimination and social exclusion and promote respect for diversity and human dignity.

Contact information

For further information specifically related to this operation please contact:

- **In Sudan:** Sudanese Red Crescent Society (Osman Gafer Abdalla, Secretary General), phone: +249 8 378 48 89 email:srcs_sg@yahoo.com
- **In Sudan:** IFRC Country Office, (Dr. Dietrich Fischer, Country Representative), Khartoum; phone: +249 9 123 04 023; email: dietrich.fischer@ifrc.org
- **In Kenya:** Eastern Africa Zone Office (Nancy Balfour, Disaster Management Coordinator, Eastern Africa, Nairobi), phone: +254.20.283.5208; Fax: +254.20.271.2777; email: nancy.balfour@ifrc.org
- **In Kenya:** Eastern Africa Zone Office (Dr. Asha Mohammed, Head of Zone, Eastern Africa, Nairobi), phone: +254.20.283.5124; fax: +254.20.271.27.77; email: asha.mohammed@ifrc.org
- **In Geneva:** Pablo Medina, Operations Coordinator for Eastern and Southern Africa; phone: +41.22.730.43.81; fax: +41 22 733 0395; email: pablo.medina@ifrc.org

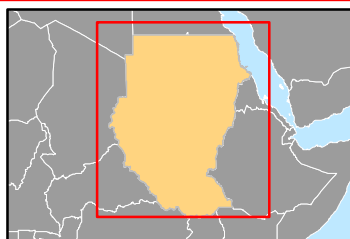
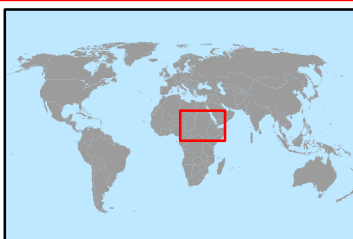
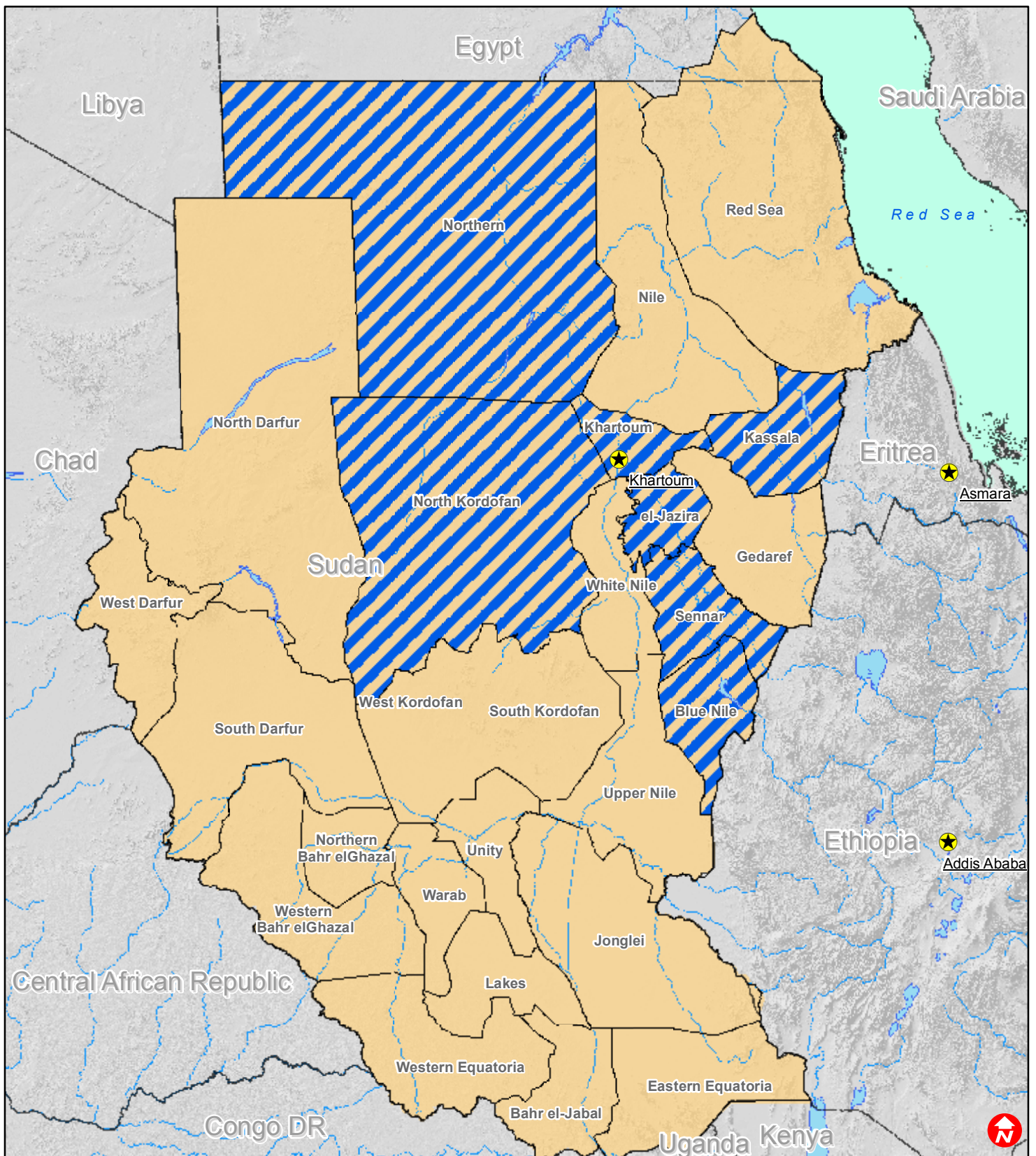
[<DREF budget and map below; click here to return to the title page>](#)

APPEAL BUDGET SUMMARY		Annex 1
	APPEAL NAME Sudan – Khartoum State Floods	Appeal Number MDRSD007
	RELIEF NEEDS	
500	Shelter	66,000
505	Construction Materials	0
510	Clothing and Textiles	0
520	Food	0
523	Seeds and Plants	0
530	Water and Sanitation	49,500
540	Medical and First Aid	0
550	Teaching Materials	5,000
560	Utensils and Tools	0
570	Other Supplies and Services	0
	Total Relief Needs	120,500
	CAPITAL EQUIPMENT	
580	Land and Buildings	0
581	Vehicles Purchase	0
582	Computers and Telecom Equipment	12,260
584	Office/Household Furniture and Equipment	0
587	Medical Equipment	0
589	Other Machinery and Equipment	0
	TRANSPORT, STORAGE AND VEHICLES	
590	Storage - Warehouse	0
592	Distribution and Monitoring	3,000
593	Transport and Vehicles Costs	21,000
	PERSONNEL	
600	International Staff	0
640	Regionally Deployed Staff	0
661	National Staff	0
662	National Society Staff	38,000
670	Consultants	0
	WORKSHOPS AND TRAINING	
680	Workshops and Training	0
	GENERAL EXPENSES	
700	Travel	0
710	Information and Public Relations	19,000
730	Office running costs	0
740	Communication Costs	5,000
750	Professional Fees	0
760	Financial Charges	0

790	Other General Expenses	10,000
	<u>SERVICE FEES</u>	
	Service Fees	
	<u>PROGRAMME SUPPORT</u>	
599	Programme Support - PSR	15,903
	Total Operational Needs	124,163
	Total Appeal Budget (Cash and Kind)	244,663
	DREF ALLOCATION	244,663



Sudan: Floods



- Lakes
- Affected areas
- Rivers
- Capitals

0 100 200 km

The maps used do not imply the expression of any opinion on the part of the International Federation of the Red Cross and Red Crescent Societies or National Societies concerning the legal status of a territory or of its authorities.
 Map data sources: ESRI, USAID, HIC, International Federation - MDRSD007.mxd