

DREF operation



International Federation
of Red Cross and Red Crescent Societies

Zambia: Cholera

DREF operation n° MDRZM005
GLIDE n° EP-2009-000020-ZMB
22 January 2008

The International Federation's Disaster Relief Emergency Fund (DREF) is a source of un-earmarked money created by the Federation in 1985 to ensure that immediate financial support is available for Red Cross and Red Crescent response to emergencies. The DREF is a vital part of the International Federation's disaster response system and increases the ability of national societies to respond to disasters.

CHF 60,959.70 (USD 54,560 or EUR 41,295) has been allocated from the International Federation of Red Cross and Red Crescent (IFRC)'s Disaster Relief Emergency Fund (DREF) to support Zambia Red Cross Society (ZRCS) in delivering immediate assistance to some 30,000 families. Unearmarked funds to repay DREF are encouraged.

Summary: Zambia has reported an outbreak of cholera since October 2008 and reported so far is 597 confirmed cholera cases with eight deaths. The worst affected areas are Lusaka where the cases are still increasing, Mpulungu, Livingstone and Mazabuka where the outbreak has been contained. All the deaths have been reported from Lusaka.



Zambia Red Cross Society volunteers working alongside government health staff at the cholera treatment centre in Lusaka: Photo: Zambia Red Cross

This operation is expected to be implemented over three months, and will therefore be completed by 31 March, 2009; a Final Report will be made available three months after the end of the operation (by 30 June, 2009).

[<click here for the DREF budget,](#)
[here for contact details,](#)
[or here to view the map of the affected area>](#)

The situation

Cholera cases were initially reported in early October 2008 in Mpulungu district of Northern Province, mainly emanating from the fishing camps. In mid November, the outbreak spread to the Southern Province in Mazabuka and Livingstone districts as well as in the capital city Lusaka. According to the Ministry of Health, the cumulative number of cholera cases since October 2008 is 597, thus 538 in Lusaka, 40 Mazabuka and 19 in Livingstone.

The cholera outbreaks in Livingstone and Mazabuka have been contained and both districts had each a patient under treatment at the time of issuing this bulletin. However, in Lusaka the cholera suspected cases are escalating with a total of 40 new cases reported on 9 and 10 January 2009, and about 35 on the 13th. The Ministry of Health spokesperson confirmed that, "125 patients are under treatment in the cholera treatment centres in the capital and that there have been eight deaths since the disease broke out"

The cholera cases are mainly in the shanty compounds with high population densities, poor drainage and sanitation systems, and limited access to safe and clean drinking water. In Lusaka, the most affected areas are Chawama, Matero, Kalingalinga, and Kanyama. The areas have a total of about 91,922 households under threat of cholera.

The Ministry of Education directed all schools in the affected areas not to re-open on 12 January 2009 as per the calendar, until the outbreak is fully controlled. As a result 20 schools in Mazabuka remain closed and similarly several others in Lusaka. The government through the Minister of Health has appealed to people suspecting cholera to visit the cholera treatment centres in order to access early treatment, hence preventing spreading the disease.

Coordination and partnerships

ZRCS has established a task force to coordinate the implementation of activities under the cholera DREF operation. The most important components of the task force are the trained volunteers who are at the centre of service delivery to the affected households. The task force is led by ZRCS disaster management coordinator who supervises a complement of staff and volunteers. Reports from the task force are shared with National Society management as well as key stakeholders on a weekly basis.

The key partners in the operation are the Disaster Management and Mitigation Unit (DMMU), Lusaka District Health Management Team (DHMT), community-based organisations (CBOs) with the affected communities, National Epidemics Preparedness and Response Committee (NEPRC) and the Lusaka City Council. ZRCS carried out a rapid assessment in the affected compounds around Lusaka and the findings were triangulated with those from the Lusaka District Task Force's earlier assessment conducted in the cholera affected districts.

The IFRC Southern African Zone office is providing technical support through its disaster management and health and care departments. Support service departments such as finance, PMER (planning, monitoring, evaluation and reporting), logistics will provide the necessary support at the request of the National Society.

Red Cross and Red Crescent action

In August 2008, ZRCS revised its cholera contingency plan in anticipation of outbreaks in late 2008 and early 2009. The revised contingency plan details the activities of the Red Cross, which are basically the same as defined in the Government's Floods and Cholera Contingency Plan for 2008/2009, which ZRCS was part of its drafting. As part of the contingency plan, ZRCS requested the IFRC for emergency funding from its disaster relief emergency fund to support this three months operation. The funding will be used to procure and distribute materials used for cholera prevention and treatment; enhancing capacity of its volunteers through training on hygiene promotion; case management; social mobilisation; production and distribution of information, education and communication (IEC) material. So far ZRCS has donated materials used for flooring at the cholera treatment centre, bedding, and containers that are being used for preparing oral rehydration solution (ORS).

ZRCS has over 60 volunteers trained in cholera sensitization being mobilized within the affected areas in Lusaka. The branches in Mazabuka and Livingstone also have volunteers ready for engagement at short notice, particularly in an emergency situation.

The needs

ZRCS will respond to the needs of the 30,000 households feared to be affected by cholera mainly in Lusaka. For the National Society to ensure quick and effective preventative and curative response, needs a strong active volunteer base. As such, ZRCS will use part of the DREF funds to position cholera kits, procure protective clothing, disinfectants, water purifiers (chlorine), IEC material and equipment used by volunteers during hygiene promotion and social mobilisation. ZRCS is also supporting the cholera treatment centres that are in need of ORS, intravenous fluids, blankets, tarpaulins, disinfectants, gloves, soap and cadaver bags.

As outlined in its cholera contingency plan, ZRCS will continue training volunteers to enhance sensitization activities in areas prone to cholera. The National Society will further increase stocks of bedding material, tents and cholera kits.

The proposed operation

Objective: To contribute to the reduction of the prevailing high infection rates and risk among 30,000 households in and around Lusaka over the next three months through:

- Improved hygiene awareness reaching 30,000 households;
- Improved response capacity of NS at branch and community level to current and future cholera outbreaks particularly in the area of community based response–rehydration management, active case finding and referrals;
- Improved curative facilities offered at cholera treatment centres;
- Enhanced volunteers' capacity to carry out sensitisation activities.

Activities planned

ZRCS plan of action for the cholera operation has the following activities;

- Training volunteers on sensitization care and prevention of diarrhoeal diseases at community level;
- Conducting hygiene promotion and sensitization on hygienic practices;
- Producing and distributing IEC material;
- Conducting contact tracing and disinfection of cholera affected households;
- Support the Ministry of Health at CTC through participation of ZRCS volunteers;
- Providing First Aid services, administering ORS and referring critical cases to health facilities;
- Water purification and disinfection of sanitation facilities;
- Pre-positioning of cholera emergency relief items
- Monitor and evaluate the relief activities and provide reports on relief distributions.

How we work

All International Federation assistance seeks to adhere to the [Code of Conduct for the International Red Cross and Red Crescent Movement and Non-Governmental Organizations \(NGO's\) in Disaster Relief](#) and is committed to the [Humanitarian Charter and Minimum Standards in Disaster Response \(Sphere\)](#) in delivering assistance to the most vulnerable.

The International Federation's activities are aligned with its Global Agenda, which sets out four broad goals to meet the Federation's mission to "improve the lives of vulnerable people by mobilizing the power of humanity".

Global Agenda Goals:

- Reduce the numbers of deaths, injuries and impact from disasters.
- Reduce the number of deaths, illnesses and impact from diseases and public health emergencies.
- Increase local community, civil society and Red Cross Red Crescent capacity to address the most urgent situations of vulnerability.
- Reduce intolerance, discrimination and social exclusion and promote respect for diversity and human dignity.

Contact information

For further information specifically related to this operation please contact:

- **In Zambia:** Charles Mushitu, Secretary General, Zambia Red Cross Society, Lusaka; Email zrcs@zamnet.zm; Phone: Tel: +260.1.25.3661; Fax : +260.1.25.2219
- **In Southern Africa Zone:** Françoise Le Goff, Head of Zone Office, Johannesburg; Email francoise.legoff@ifrc.org; Phone: Tel: +27.11.303.9700; +27.11.303.9711; Fax: +27.11.884.3809; +27.11.884.0230
- **In Southern Africa Zone:** Disaster Management Department: Farid Aiywar; Email farid.aiywar@ifrc.org; Phone: Mobile: +27.83.440.0564 Tel: +27.11.303.9700; +27.11.303.9721; Fax: +27.11.884.3809; +27.11.884.0230
- **In Geneva:** John Roche, Operations Coordinator, Email: john.roche@ifrc.org; Phone: +41.22.730.4400, Fax: +41.22.733.03.95

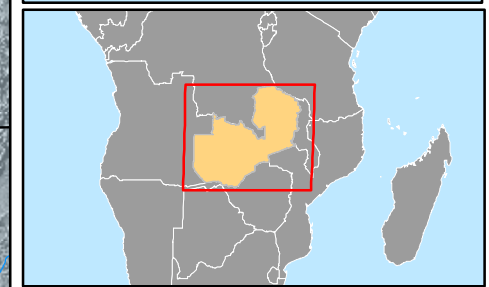
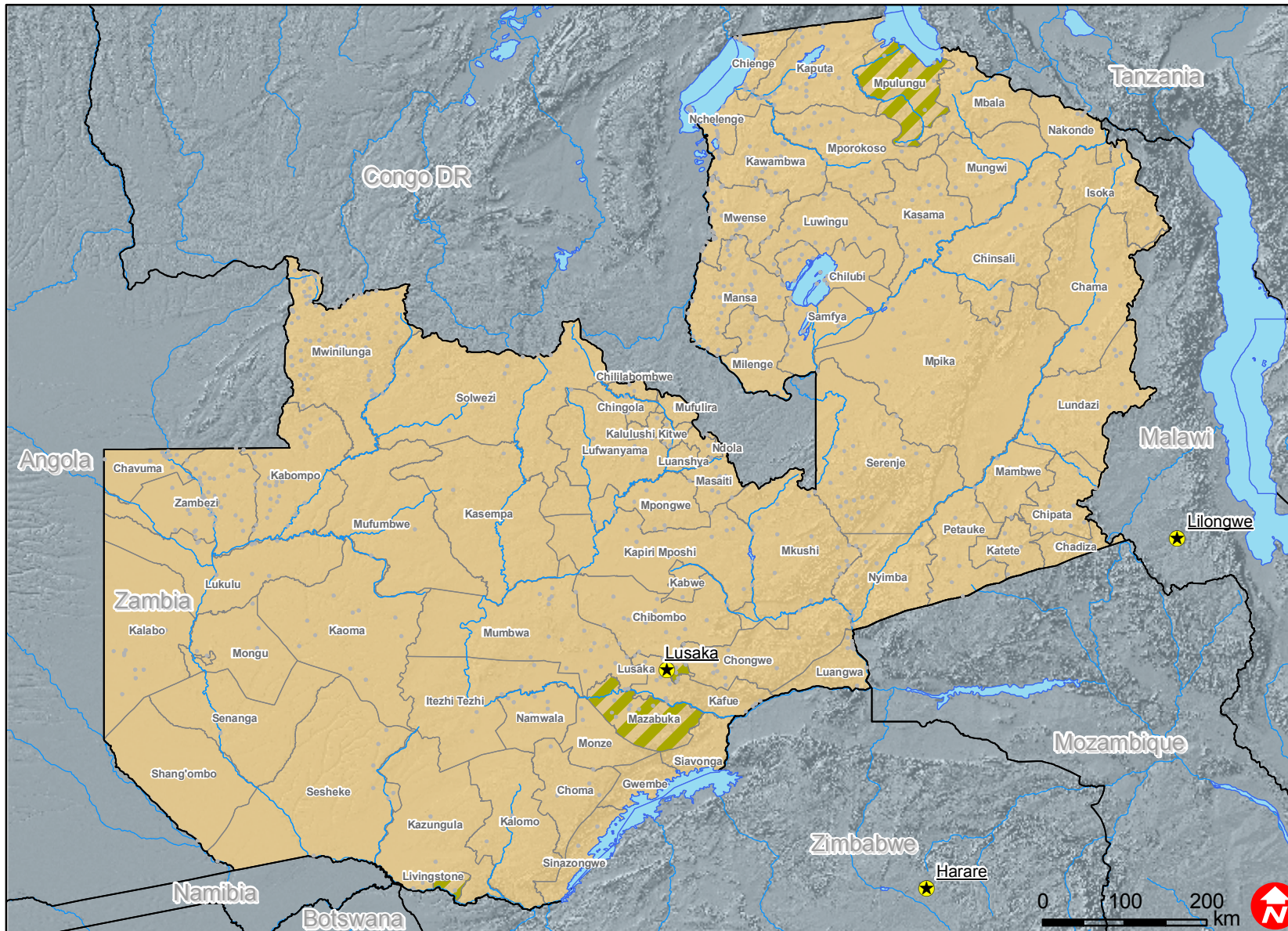
[<DREF budget and map below; click here to return to the title page>](#)

Summary Budget

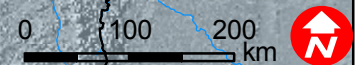
Item Description	Total CHF cost
Fuel	6,270.00
Volunteer incentives	7,125.00
Transport Refund	190.00
Motor vehicle service and maintenance	2,850.00
Staff allowances	3,420.00
Communication costs	1,520.00
Batteries	38.00
Training of volunteers	3,277.50
Facilitator allowance (DHMT)	855.00
Gum boots	1,130.00
T-shirts	1,140.00
Gloves	190.00
Soap	1,330.00
Rain coats	1,290.00
Disinfectants	1,778.00
Sprayers	264.48
Face masks disposable	1,330.00
Note Books	94.24
Pens	95.00
A4 posters	2,660.00
A3 posters	950.00
Flyers/Leaflets	1,140.00
Stickers (coverage indicators)	950.00
Mega phones	190.00
Chlorine liquid	2,280.00
Chlorine granular	1,816.40
Intravenous fluids (ringers lactate)	2,181.20
ORS	2,029.20
Cannulars	3,078.00
Giving Sets	2,781.60
Disinfectant (Jik)	1,710.00
Laundry Soap	1,045.00
Total	56,497.00
Programme Support Recovery (PSR) 6.5%	3,962.38
Grand Total	60,959.70



Zambia: Cholera



- Capitals
- Cities
- River
- Lake
- Districts
- Affected areas



The maps used do not imply the expression of any opinion on the part of the International Federation of the Red Cross and Red Crescent Societies or National Societies concerning the legal status of a territory or of its authorities.
 Map data sources: ESRI, DEVINFO, International Federation, MDRZM005.mxd