

# DREF operation



International Federation  
of Red Cross and Red Crescent Societies

## Bangladesh: Cold Wave

DREF operation n° MDRBD005  
GLIDE n° **CW-2010-000013-BGD**  
21 January 2010

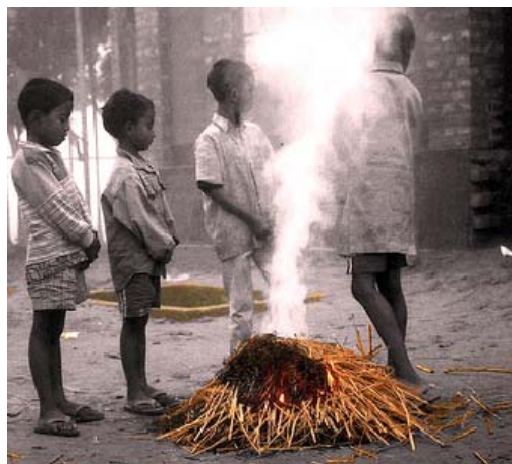
The International Federation's Disaster Relief Emergency Fund (DREF) is a source of un-earmarked money created by the International Federation in 1985 to ensure that immediate financial support is available for Red Cross and Red Crescent response to emergencies. The DREF is a vital part of the International Federation's disaster response system and increases the ability of national societies to respond to disasters.

**CHF 219,317 (USD 210,914 or EUR 148,704) has been allocated from the International Federation's Disaster Relief Emergency Fund (DREF) to support the national society in delivering immediate assistance to some 50,000 people (approximately 10,000 families). DREF-supported distributions will be completed within two months, and a Final Report will be made available by the end of June 2010. Un-earmarked funds to repay DREF are encouraged**

**Summary:** Since December 2009, Bangladesh's northern and south-west region have been experiencing a severe cold wave. The cold wave combined with dense fog has had an adverse impact on the agriculture and fisheries sector as well as the quality of life of normal people. Poor people in the northern region of the country have been the worst affected. Struggling to ward off the night cold, the local population has faced a significant rise in respiratory illnesses, and in some cases death.

The Bangladesh Meteorological Department (BMD) has predicted that further cold waves (4°C - 6°C) are likely to sweep across the northern and central parts of the country during the remainder of January as reported on 6 January 2010. According to national daily, Janakantha more than 135 people died from the cold wave across the country.

The Bangladesh Red Crescent Society with support from the International Federation responded swiftly to the cold wave. BDRCS/International Federation distributed 48,000 blankets from disaster preparedness (DP) stock at the national headquarters (NHQ) to 9,600 families in 64 districts. In addition, Bangladesh Red Crescent Society's district units have been collecting warm clothes and distributing them to those who are affected. The Bangladesh government and other humanitarian agencies/organizations including the UNDP have been distributing blankets/warm clothes among vulnerable people but many poor people are still unassisted. According to the weather forecast from BMD, the cold wave situation may get worse and may last another three weeks. If this occurs, the cold wave will affect peoples' daily lives, their livelihood and their income, in particular the poor. The Bangladesh Red Crescent Society/International Federation will continue the distribution of packages of warm clothes to assist 10,000 families in ten most affected districts.



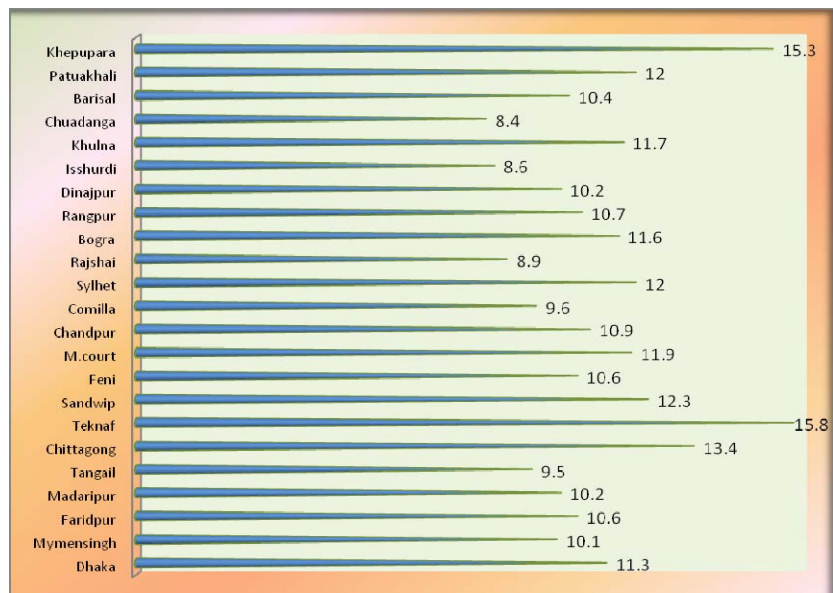
Children warming themselves by a small kindle fire. Photo credit: International Federation

The International Federation, on behalf of the Bangladesh Red Crescent Society, would like to thank all donors and partners for their generous support of DREF. Details of all donors can be found [here](#).

[<click here for the DREF Budget Summary, or here to view the map of the affected area>](#)

## The situation

The unprecedented cold wave and dense fog that swept the northern region of Bangladesh from December 2009 and January 2010 has had an adverse impact on daily life, as well as on the agriculture sector, and the fisheries in the country. Bangladesh is currently experiencing a severe cold wave. Northern and southwestern parts of the country experienced a rapid fall in temperature on 1 January 2010. Poor people in the northern region of the country are the worst affected. The impact of the cold wave has resulted in a significant rise in respiratory illnesses, and in some cases death. The Bangladesh Meteorological Department (BMD) has predicted that a further one or two severe cold waves (4°C - 6°C). These are likely to sweep across the northern and central parts of the country during the remainder of January as reported on 6 January 2010. During the last ten days temperatures have remained low, with cold winds and severe fog. The temperature has come down to 7.7°C on 18 January 2010 in Dinajpur, one of the northern districts. So far, the cold wave claimed 135 lives with most victims being children and the elderly. Hospitals in the affected districts have reported higher numbers of admissions with cold weather related illnesses. News reports from various media sources including e-media have mentioned that the cold wave is severe and has caused the deaths of many people, probably for the first time in Bangladesh. In effect, BMD's representative said on 19 January 2010 that "another bitter cold wave is likely to sweep over the country" in the coming week



The average minimum temperature in Celsius for the period of 8 to 14 January 2010. (Normal temperatures in the summer for Bangladesh ranges between 30°C - 36°C; and normal temperatures in the winter range between 15°C-20°C ) Source: Bangladesh Meteorological Department

The Bangladesh Red Crescent Society (BDRCS)/International Federation has responded with

assistance for the people of Bangladesh through the distribution of about 48,000 blankets on top of the 75,000 blankets distributed by the national government in the north and in Dhaka. In addition, ahead of further expected cold waves, the United Nations Development Programme (UNDP) is working to complement the national response by providing emergency assistance to ten affected districts: Dinajpur, Kurigram, Rajshahi, Bogra, Sirajgonj, Pabna, Sunamgonj, Sarkhira, Faridpur, and Jhenaidah.

## Coordination and partnerships

Since BDRCS/International Federation are active members of the Disaster Emergency Response (DER) group, information and operation updates will be shared with other humanitarian agencies and the national government in order to avoid any overlapping of distribution. Coordination between UNDP and BDRCS has been established in terms of targeting geographic locations. Within the Red Cross and Red Crescent Society (RCRC) responses, discussions were held between BDRCS and partner national societies (PNSs) to divert allocation of Chapainawabganj district to other affected areas as 5,000 people have been provided with blankets through the Swiss Red Cross programme. BDRCS has good contacts with the local administration that enables

the national society to effectively target the most affected areas and people. BDRCS' national headquarters (NHQ) has been communicating with BMD to monitor the weather situation. In addition, BDRCS has been gathering situation updates from different agencies including UNDP and the network for information, response and preparedness activities on disaster (NIRAPAD).

## Red Cross and Red Crescent action

BDRCS and the International Federation has been closely monitoring the situation and overall developments. BDRCS has completed the distribution of around 48,000 blankets to the 9,600 families in 64 districts across the country from buffer disaster preparedness (DP) stock. Unit level officers, unit executive committee and local Red Crescent volunteers actively took part in distribution among the affected people. In Dhaka city alone, BDRCS distributed 500 blankets among the street people of Dhaka city.



BDRCS volunteers distributing blankets to people living on the street.

Photo credit: International Federation

Local Red Crescent Youth (RCY) volunteers in the Chittagong and Satkhira unit, in collaboration with a local college distributed 200 blankets and 100 pieces of warm clothes and used garments to the homeless people in Chittagong city. The International Federation has updated the Disaster Management Information System (DMIS) on the cold wave situation and BDRCS' response

District breakdown is highlighted in the following chart:

Bangladesh Cold Wave Event 2009-10: District wise Assistance through Blanket distribution (as of 200110)																				
Relief Department, Bangladesh Red Crescent Societies																				
SL. No.	Districts of Dhaka Division	1st phase	2nd phase	Others	Total	SL. No.	Districts of Chitagon Division	1st phase	2nd phase	Others	Total	SL. No.	Districts of Sylhet Division	1st phase	2nd phase	Others	Total			
1	Dhaka(city,Dis)	400	1,000	2,380	3,780	18	Coxsbazar	200	-	-	200	29	Sylhet	300	-	-	300			
2	Gazipur	200	-	-	200	19	Bandarban	200	-	-	200	30	Sunamgonj	300	-	-	300			
3	Tangail	200	-	300	500	20	Rangamati	200	-	-	200	31	Moulvibazar	200	-	-	200			
4	Jamalpur	300	500	-	800	21	Khagrachhari	200	200	-	400	32	Hobigonj	200	-	-	200			
5	Sherpur	300	300	-	600	22	Chittagong(Cit,Dis)	400	-	100	500									
6	Mymensingh	200	-	200	400	23	Comilla	200	-	100	300									
7	Netrokona	300	300	-	600	24	Feni	200	-	-	200									
8	Kishoregonj	200	300	-	500	25	Noakhali	200	-	-	200									
9	Narsingdi	200	-	-	200	26	Luxmipur	0	-	50	50									
10	Narayanganj	200	-	-	200	27	Chandpur	200	-	-	200									
11	Munshigonj	200	-	100	300	28	Brahmanbaria	200	-	350	550									
12	Shariatpur	200	-	-	200															
13	Madaripur	200	200	100	500															
14	Gopalganj	200	500	300	1,000															
15	Faridpur	200	-	-	200															
16	Rajbari	200	-	-	200															
17	Manikgonj	200	300	-	500															
<b>Division total</b>		<b>3900</b>	<b>3400</b>	<b>3380</b>	<b>10680</b>	<b>Division total</b>		<b>2200</b>	<b>200</b>	<b>600</b>	<b>3000</b>	<b>Division total</b>		<b>1000</b>	<b>0</b>	<b>0</b>	<b>1000</b>			
SL. No.	Districts of Barisal Division	1st phase	2nd phase	Others	Total	SL. No.	Districts of Khulna Division	1st phase	2nd phase	Others	Total	SL. No.	Districts of Rajshahi Division	1st phase	2nd phase	Others	Total			
33	Bansai	200	200	100	500	39	Bagerhat(sidr)	1,000	-	-	1,000	49	Panchagar	300	500	-	800			
34	Barguna (sidr)	1,000	-	-	1,000	40	Khulna(Cit,Dis)	400	-	100	500	50	Thakurgaon	300	500	-	800			
35	Patuakhali (sidr)	1,000	-	200	1,200	41	Jessore(W.L+Cold)	4,200	300	300	4,800	51	Kurigram	300	800	-	1,100			
36	Pirojpur (sidr)	1,000	-	10	1,010	42	Chuadanga	200	300	-	500	52	Nilphamari	300	800	-	1,100			
37	Jhalokathi	200	-	-	200	43	Kustia	200	-	-	200	53	Gaibandha	300	800	-	1,100			
38	Bhola	200	-	-	200	44	Meherpur	200	300	100	600	54	Chapainawabga	300	500	-	800			
						45	Satkhira(W.L+cold)	4,200	-	300	4,500	55	Joypurhat	300	500	-	800			
						46	Jenaidah	200	-	100	300	56	Dinajpur	300	500	-	800			
						47	Narail	200	-	-	200	57	Naogaon	300	500	-	800			
						48	Magura	200	500	500	1,200	58	Nator	300	500	-	800			
												59	Pabna	300	500	-	800			
												60	Bogra	300	500	-	800			
												61	Rangpur	300	1,000	-	1,300			
												62	Rajshahi(city,Di)	500	800	-	1,300			
												63	Lalmonirhat	300	800	100	1,200			
												64	Sirajgonj	300	500	100	900			
<b>Division total</b>		<b>3600</b>	<b>200</b>	<b>310</b>	<b>4110</b>	<b>Division total</b>		<b>11,000</b>	<b>1,400</b>	<b>1,400</b>	<b>13,800</b>	<b>Division total</b>		<b>5000</b>	<b>10000</b>	<b>200</b>	<b>15200</b>			
<b>Country Total</b>																				
1st phase		26,700			2nd phase			15,200			Others			5,890			<b>Grand Total</b>		<b>47,790</b>	

## The needs

According to BMD's weather bulletin, the cold wave situation may get worse. This means the situation will continue to cause severe suffering for the poor people in the northern and south western districts. According to national dailies more than 135 people died across the country. Though government and different humanitarian agencies/organizations including BDRCS, UNDP, Prohom Alo Bandhu Shova (national daily Prothom Alo's readers forum) and so on; responded swiftly to the cold wave, response is found to be inadequate. Thousands of people are still not being assisted. Under the ongoing cold wave response, assistance in terms of warm clothes need to be provided to most vulnerable populations i.e. wage earners, agriculture labour, the street people, internally displaced, and so on in identified priority district as mentioned in the table below. Women, elderly, children, and persons with disability will be given priority for the assistance.

## The proposed operation

The proposed operation is based on available information from the government and initial assessments carried out by the national society during distribution of blankets, as well as the capacity of the BDRCS. With support from the International Federation's DREF allocation, package of warm clothes will be procured and distributed to 10,000 severely affected families in ten districts.

## Relief distributions (food and basic non-food items)

**Objective: 50,000** severely affected people or 10,000 families receive a package of warm clothes in ten districts

Supported by the International Federation, BDRCS will assist up to 10,000 severely affected families with the distribution of a package of warm clothes. Support per family will comprise of a one time distribution of two blankets, one saree, one lungi, one shawl and one woollen cap from disaster preparedness stocks from BDRCS/International Federation which will be replenished by this DREF allocation. The distribution plan for families per district are as follows:

Table: District wise allocation

<b>Sl</b>	<b>District</b>	<b>Upazila</b>	<b>No. of families</b>
<b>1</b>	Panchagar	1. Tentulia	1000
		2. Atwari	
<b>2</b>	Thagurgaon	1. Baliadangi	1000
		2. Haripur	
		3. Ranisenkail	
<b>3</b>	Nilphamari	1. Dimla	1000
		2. Jaldhaka	
<b>4</b>	Dinajupur	1. Biral	1000
		2. Fulbari	
<b>5</b>	Lalmonirhat	1. Hatibandha	1000
		2. Patgram	
		3. Aditmari	
<b>6</b>	Kurigram	1. Roumari	1000
		2. Chilmari	
		3. Ulipur	
<b>7</b>	Gaibandha	1. Fulchari	1000
		2. Sundarganj	
		3. Saghata	
<b>8</b>	Rangpur	1. Gangachhara	1000
		2. Pirganj	
<b>9</b>	Chuadanga	1. Damurhuda	1000
		2. Jiban nagar	
<b>10</b>	Magura	1. Sadar	1000
		2. Sripur	
	Total of families		10,000

### Activities planned:

- Door to door assessments
- Beneficiary registration
- Local procurement of some items according to International Federation standard procedures
- Dispatch and transportation by BDRCS to the distribution sites
- Storage and distribution of relief items, especially at unit level
- Distribution by trained Red Crescent Youth volunteers
- Regular detailed monitoring and reporting of distributions
- Ongoing monitoring and technical advice by the BDRCS national headquarters and the International Federation

### How we work

**All International Federation assistance seeks to adhere to the [Code of Conduct for the International Red Cross and Red Crescent Movement and Non-Governmental Organizations \(NGOs\) in Disaster Relief](#) and is committed to the [Humanitarian Charter and Minimum Standards in Disaster Response \(Sphere\)](#) in delivering assistance to the most vulnerable.**

The International Federation's activities are aligned with its Global Agenda, which sets out four broad goals to meet the Federation's mission to "improve the lives of vulnerable people by mobilizing the power of humanity".

#### Global Agenda Goals:

- Reduce the numbers of deaths, injuries and impact from disasters.
- Reduce the number of deaths, illnesses and impact from diseases and public health emergencies.
- Increase local community, civil society and Red Cross Red Crescent capacity to address the most urgent situations of vulnerability.
- Reduce intolerance, discrimination and social exclusion and promote respect for diversity and human dignity.

### Contact information

**For further information specifically related to this operation please contact:**

#### In Bangladesh:

- Bangladesh Red Crescent Society, Mr. Mostafa Kamal, Acting Secretary General, email: [bdrcs@bangla.net](mailto:bdrcs@bangla.net), phone: +88.02.935.2226.

International Federation country office:

- Mr. Udaya Regmi, Head of country office, email: [udaya.regmi@ifrc.org](mailto:udaya.regmi@ifrc.org), phone: +88.02.933.7314, fax: +88.02.934.1631.

#### In India:

International Federation South Asia regional office:

- Mr. Azmat Ulla, Head of regional office, email: [azmat.ulla@ifrc.org](mailto:azmat.ulla@ifrc.org), phone: +91 11 2411 1122, fax: +91 11 2411 1128.

#### In Malaysia:

International Federation Asia Pacific zone office:

Jagan Chapagain, Deputy Head of Zone, email: [jagan.chapagain@ifrc.org](mailto:jagan.chapagain@ifrc.org), phone + 603 9207 5700

- For disaster management: Elzat Mamutalieva, Disaster response coordinator, phone: +603 9 207 5727; mobile: +6019 274 4960, email: [elzat.mamutalieva@ifrc.org](mailto:elzat.mamutalieva@ifrc.org)
- For pledges of funding: Penny Elghady, Resource mobilization and planning, monitoring, evaluation reporting coordinator, phone +603 9207 5775, email: [penny.elghady@ifrc.org](mailto:penny.elghady@ifrc.org)

**[<DREF budget summary and map below; click here to return to the title page>](#)**

## **DREF BUDGET SUMMARY**

Bangladesh - Cold Wave

MDRBD005

**ORIGINAL**

### **RELIEF NEEDS**

Clothing & Textiles 176,923

---

**Total Relief Needs 176,923**

### **TRANSPORT, STORAGE & VEHICLES**

Storage - Warehouse 769

Distribution & Monitoring 10,769

Transport & Vehicles Costs 7,385

### **PERSONNEL**

National Society Staff 3,846

### **GENERAL EXPENSES**

Travel 3,077

Information & Public Relations 1,077

Office running costs 769

Communication Costs 308

Financial Charges 138

### **PROGRAMME SUPPORT**

Programme Support - PSR (6.5% of total) 14,256

---

**Total Operational Needs 219,317**

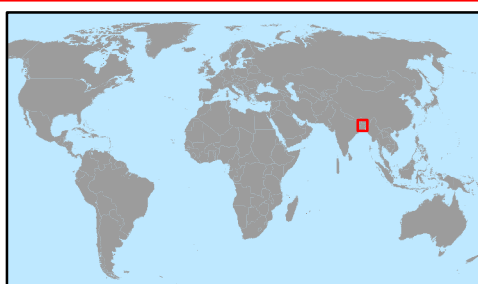
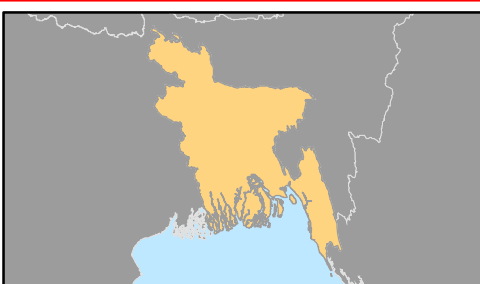
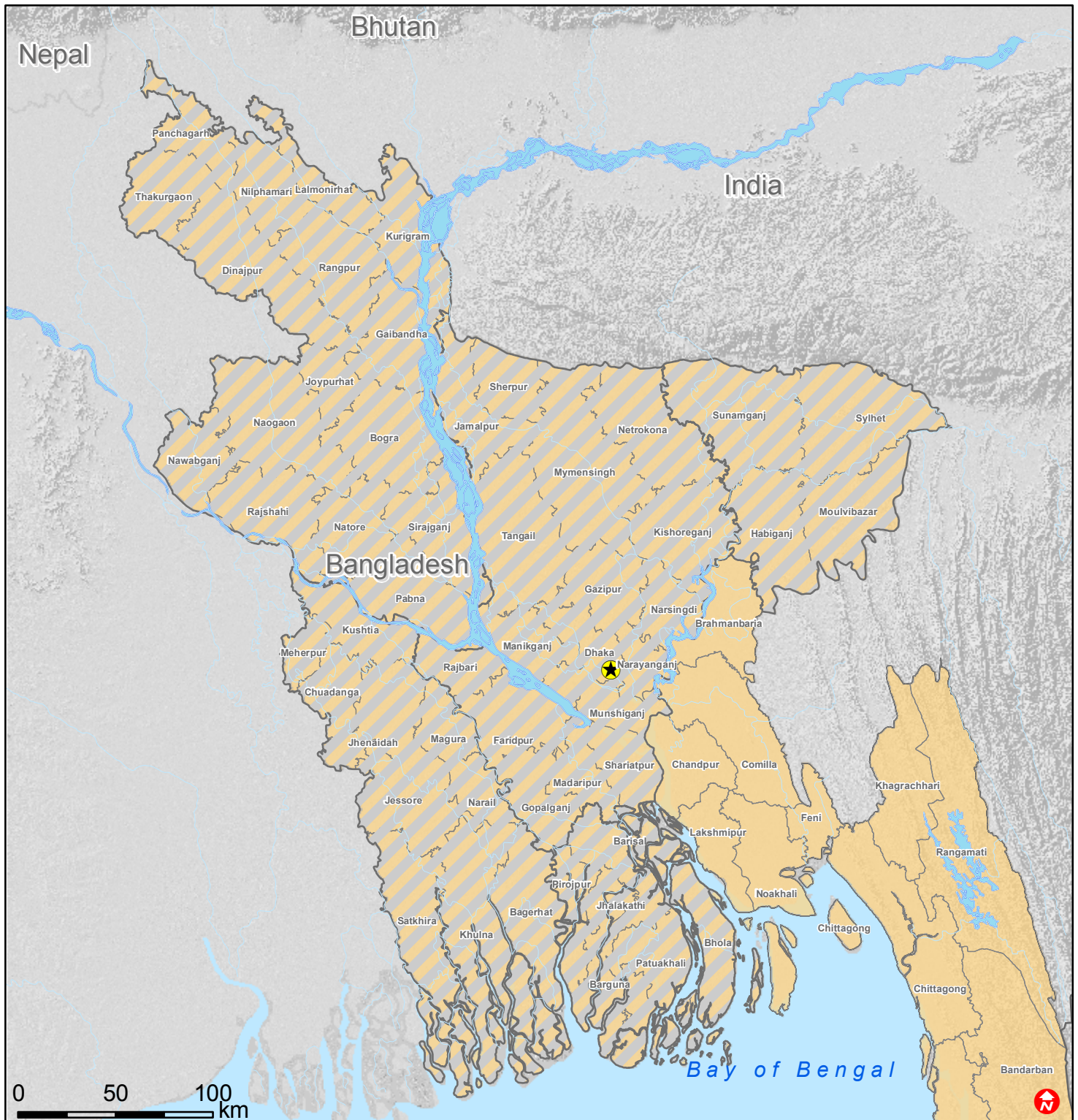
---

**Total DREF Budget (Cash & Kind) 219,317**

---



# Bangladesh: Cold wave



- Capitals
- Rivers
- lakes
- Most affected regions
- Districts