

DREF operation



International Federation
of Red Cross and Red Crescent Societies

Benin: Floods

DREF operation n° MDRBJ007
GLIDE n° FL-2010-000202-BEN
15 October, 2010

The International Federation of Red Cross and Red Crescent (IFRC) Disaster Relief Emergency Fund (DREF) is a source of un-earmarked money created by the Federation in 1985 to ensure that immediate financial support is available for Red Cross and Red Crescent emergency response. The DREF is a vital part of the International Federation's disaster response system and increases the ability of National Societies to respond to disasters.

CHF 183,673 (USD 191,773 or EUR 137,332) has been allocated from the International Federation of Red Cross and Red Crescent Societies (IFRC)'s Disaster Relief Emergency Fund (DREF) to support the National Society in delivering immediate assistance to 10,000 beneficiaries. Unearmarked funds to repay DREF are encouraged.

Summary: Continuous rainfall in Benin and the overflow of the Niger River have caused heavy flooding in many parts of the country since July 2010. Recent precipitations during the last week of September exacerbated flooding that displaced over 150,000 people and caused more than 10 deaths. Household items as well as houses, farmlands and livestock worth thousands of dollars were submerged in 22 of the 77 districts in the country.

The situation has been compounded by poor hygiene and sanitation practices among the affected population, thus increasing the risk of water-borne diseases. A cholera outbreak has also been in some parts of the country since June 2010 prompting Red Cross of Benin to scale-up hygiene promotion and social mobilisation on the prevention of communicable diseases.

The Red Cross of Benin carried out preliminary assessment of the situation to determine the damage and needs. The National Society is working in collaboration with other humanitarian agencies to reduce the impact of floods among the displaced and affected families now sheltered in public buildings, some under trees thereby exposing them to several communicable diseases. The Government of Benin has intervened by providing limited relief assistance to some of the affected communities and has called on humanitarian agencies in the country including the Red Cross of Benin to complement its effort.

With support from the IFRC, the National Society envisages extending relief assistance to 10,000 target beneficiaries. The Red Cross of Benin has already mobilized its volunteers in the affected communities to carry out evacuation, First Aid, psychological support and sensitization on good hygiene practices. The National Society also provided NFIs to some 1,061 affected households, whilst flooding continues due the persistent heavy rainfall.



Some of the families displaced by floods:
Photo: Red Cross of Benin

This operation is expected to be implemented over two months, and will therefore be completed by December, 2010; a Final Report will be made available three months after the end of the operation (by March, 2011).

[<click here for the DREF budget; here for contact details; here to view the map of the affected area>](#)

The situation

The heavy rains in the north of Benin since the beginning of July 2010 has caused the Niger River to overflow into the smaller rivers of Alibori, Mékrou and Sota, which have also overflowed thereby causing serious flooding in the districts of Karimama, Malanville, Tchaourou and Bassila in the upper region of Benin. The release of water from the Nagbéto hydro-power dam coupled with the overflow from the Niger River has also led to the overflow of River Ouémé and caused heavy flooding in the central region of the country. Communities most affected were Zagnanado, Ouinhi, Zogbodomey, Bonou, Adjohoun, Dangbo, Aguégoués, Sèmè-Podji, Pobè, Ifangni, Adjarra, Porto-Novo, Cotonou, So-Ava, Abomey-Calavi, Karimama, Malanville, Tchaourou (Bétérou), Bassila, Athiémé, Lokossa and Grand-Popo, i.e. 22 districts out of 77 in the country. According to government source and local press, over 150,000 persons have been rendered homeless while 13 lives were claimed. According to the same sources, more than 5,247 houses and 26,115 hectares of farmland were destroyed by the floods disaster. Many of the displaced persons are sheltered in temporary camps and some under trees without tents, mats and blankets thereby being exposed to cold, pneumonia and acute respiratory infections (ARI) as well as cholera and malaria.

Inaccessibility to many of the affected communities because of the bad roads and collapse of bridges has been the major hindrance to the preliminary assessment carried out by Red Cross volunteers. However, as flood water recedes, the volunteers managed to reach the flooded communities to carry out initial damage and needs assessment; the results are shown in the table 1 below:

Table 1: Results of the initial damage assessment by Red Cross of Benin

Affected districts	Number of affected households	Number of affected persons
Tchaourou	437	2,306
Zagnanado	1,188	5,940
Ouinhi	746	3,815
Zogbodomey	843	4,324
Bonou	953	4,811
Adjohoun	1,030	5,205
Dangbo	775	3,875
Aguégoués	473	6,031
Sèmè-Podji	485	2,407
Cotonou	3,143	15,823
Abomey-Calavi	1,957	9,814
So-Ava	574	2,832
Athiémé	1,301	6,532
Lokossa	673	3,465
Grand-Popo	563	2,764
Total	15,141	79,944

Flooded waters have submerged potable water wells, latrines and some houses making the affected families use unsafe water sources for domestic purposes. In addition, poor sanitation and poor hygiene practices increased the risk of communicable diseases, in an already precarious situation where an outbreak of cholera had been reported since the second week of June 2010. Bonou and Aguégoués have recorded 113 cases of cholera with two deaths. As at end of August 2010, 510 cases have been recorded in these communities. However, with the intervention of humanitarian actors including the Red Cross, reported cases have been on the decrease. The flooding situation risks changing these downward trends unless hygiene promoting and provision of water and sanitation services are increased among the flood affected population.

Coordination and partnerships

Government authorities have visited the affected communities to assess the extent of the damages and provide moral support to the affected populations. The government has also donated some food and non-food items (NFIs) such as mosquito bed nets, mats, water treatment tablets, blankets and tents. The Department of Civil Protection is leading the coordination with the Red Cross of Benin participating in the meetings organized by the department. The objective of the coordination meetings is to harmonize efforts of the humanitarian actors in order to ensure effectiveness, efficiency and relevancy to the needs of the displaced and affected people.

Red Cross and Red Crescent action

The Red Cross of Benin mobilized its volunteers and in collaboration with the government, local authorities, UN agencies and other humanitarian organizations carried out a preliminary assessment of the situation. Despite the challenges encountered in accessing some of the affected communities because of the high level of flood water, the Red Cross of Benin was able to identify the most affected households. With the support of the IFRC West Coast Regional Representation in Abuja, the National Society has distributed NFIs to 1,061 affected households in Karimama and Malanville. NFIs distributed include mosquito bed nets, blankets, children clothes, jerry cans, soap and water treatment tablets. The Red Cross volunteers have also been sensitizing the affected communities on water treatment, good hygiene and sanitation practices. The Red Cross of Benin relief assistance aims to reduce the impact of the floods and prevent the spread of communicable diseases. With the flood disaster likely impact on the increase of cholera cases especially in Cotonou, the Red Cross of Benin has been scaled up hygiene and health education. With support from UNFPA, the Red Cross of Benin has distributed hygienic birth kits to pregnant women whose settlements have been cut off from maternity centres by the flood.

The IFRC West Coast Regional Representation provided some of the NFIs distributed from its regional stock in Porto-Novo, while the National Society exhausted its national emergency stock from the DISAO+ project funded by the Spanish cooperation. The IFRC West Coast Regional Representation also provided some funding support for the National Society to facilitate the distribution of the NFIs to beneficiaries. The national disaster response team (NDRT) members continue carrying out assessment of the situation and registration of affected households.

The needs

Beneficiary selection: The Red Cross of Benin is targeting 2,000 families (10,000 persons) including children and the elderly. In addition to the NFIs, the Red Cross of Benin will also provide health and hygiene education carried out by the trained Red Cross volunteers. Below are the estimated quantities of the required NFIs.

Items	Shelter kits	Blankets	ITNs	Mats	Soap	Water tablets	Plastic buckets	Kitchen sets
Quantity	500	4,000	3,000	2,000	8,000	100,000	2,000	250

The International Federation, through its West Coast Regional Representation in Abuja, Nigeria will continue to work closely with the Red Cross of Benin by supporting its staff and volunteers in all activities of the Red Cross and ensuring that management as well as operational issues are directed and implemented within the principles and core values of the Red Cross Movement to reach the needs of the most vulnerable.

The proposed operation

Relief distributions (food and basic non-food items)	
Outcome: 2,000 most vulnerable households have received basic non-food items based on the assessment and selection criteria of Red Cross of Benin.	
Output / Expected Results	Activities Planned
Relief items are procured and distributed to 2,000 most affected households and selected through established Red Cross selection criteria.	<ul style="list-style-type: none"> • Mobilize and train 70 Red Cross volunteers on assessment and distribution strategies of the Red Cross; • Make contact and establish a relationship with local authorities in the affected communities; • Conduct assessment - compile and verify the list of the most affected population in each targeted community; • Ensure the availability of a reliable beneficiary data base; • Procure and distribute 4,000 blankets, 2,000 sleeping mats and 250 kitchen sets to the most affected households; • Monitor the emergency activities and produce reports on the distribution of relief items.
Emergency Health	
Objective: To contribute to the prevention of communicable diseases among 2,000 most vulnerable families.	
Output / Expected Results	Activities Planned
The risk of communicable diseases spread among the affected communities is reduced	<ul style="list-style-type: none"> • Train 50 volunteers on prevention of diarrheal and communicable diseases; • Produce and distribute information, education and communication (IEC) materials on health, water, sanitation and risk reduction sensitization activities. • Conduct health sensitization activities among the affected communities.
Objective: To reduce the morbidity and mortality due to malaria among 1,500 flood affected families.	
Output / Expected Results	Activities Planned
1,500 most affected families are reached by volunteers through the dissemination of messages on malaria prevention and control, distribution of LLIN and assisting with the correct hanging.	<ul style="list-style-type: none"> • Procure and distribute 3,000 mosquito nets for 1,500 most affected families; • Procure nail and strings for mosquito nets (LLIN) hang-up campaign for 1,500 affected families. • Disseminate key messages concerning use of LLIN and malaria, targeting pregnant women and caretakers for children under five years.
Water, Sanitation, and Hygiene Promotion	
Objective: To reduce the risk of waterborne diseases through provision of drinking water, health education and sensitization on good hygiene practices to the flood affected communities	
Output / Expected Results	Activities Planned
2,000 most affected households in the flood affected communities have access to potable water, hygiene and sanitation facilities.	<ul style="list-style-type: none"> • Strengthen the capacity of 70 volunteers in water treatment. use of water treatment tablets and hygiene promotion; • Procure and distribute 100,000 water treatment tablets and 2,000 jerry cans for 2,000 most affected households; • Procure and distribute 8,000 bars of soap to 2,000 most affected households • Disinfect water wells in the target communities; • Sensitize the population on good hygiene and sanitation practices and • Conduct a cleanup campaign.

Emergency Shelter	
Outcome: 500 most affected households are sheltered with dignity.	
Output / Expected Results	Activities Planned
Shelter kits have been distributed to 500 most affected households and support given in the construction of temporary shelters.	<ul style="list-style-type: none"> • Mobilize and brief 70 Red Cross volunteers on assessment and emergency shelter strategy of the Red Cross; • Procure and distribute 500 shelter kits to the most affected households; • Construction of temporary emergency shelters.

Communications – Advocacy and Public information

The proposed Red Cross of Benin relief operation supported by IFRC West Coast Regional Representation will provide an opportunity for the National Society to demonstrate its auxiliary role to the local authorities in disaster response. The National Society will ensure adequate and effective national and international coverage of the Red Cross intervention. The IFRC assists with the formulation of strategies to address the public and the media during the operation, document the distribution process, disseminate Red Cross principles and values through the production of relevant articles and photographs. The communication and advocacy activities will contribute to enhancing the visibility of the Red Cross in Benin as well as strengthening internal capacity on communication and information dissemination during an emergency operation.

How we work

All IFRC assistance seeks to adhere to the [Code of Conduct for the International Red Cross and Red Crescent Movement and Non-Governmental Organizations \(NGO's\) in Disaster Relief](#) and the [Humanitarian Charter and Minimum Standards in Disaster Response \(Sphere\)](#) in delivering assistance to the most vulnerable.

The IFRC's vision is to inspire, encourage, facilitate and promote at all times all forms of humanitarian activities by National Societies, with a view to preventing and alleviating human suffering, and thereby contributing to the maintenance and promotion of human dignity and peace in the world.

The IFRC's work is guided by [Strategy 2020](#) which puts forward three strategic aims:

1. Save lives, protect livelihoods, and strengthen recovery from disaster and crises.
2. Enable healthy and safe living.
3. Promote social inclusion and a culture of non-violence and peace.

Contact information

For further information specifically related to this operation please contact:

- **In Benin:** Fabien Sounkoto, Executive Secretary, Red Cross of Benin; Phone: +229.96.666.997; Email: sounkofabien@yahoo.fr
- In **IFRC West Coast Regional Representation:** Thierry Coppens, Regional Representative, Abuja, Phone: +234.9.870.3924; email: thierry.coppens@ifrc.org;
In **IFRC West Coast Regional Representation:** Jerry Niati, Regional Disaster Management Manager, Abuja, Phone: +234.703.414.2708; email: niati.jerry@ifrc.org
- **In IFRC Africa Zone:** Dr Asha Mohammed, Head of Operations, Johannesburg, Email: asha.mohammed@ifrc.org, Phone: +27.11.303.9700, Fax: + 27.11.884.3809; +27.11.884.0230
- In **Geneva:** Christine South, Acting Operations Coordinator for Africa; phone: +41 22 730 4529 (direct) Mobile: +41 79 308 98 24; Fax: +41 22 733 03 95; email: christine.south@ifrc.org

[<DREF budget and map below; click here to return to the title page>](#)

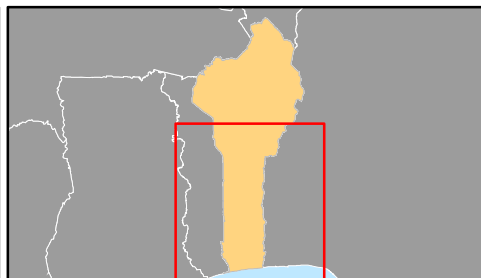
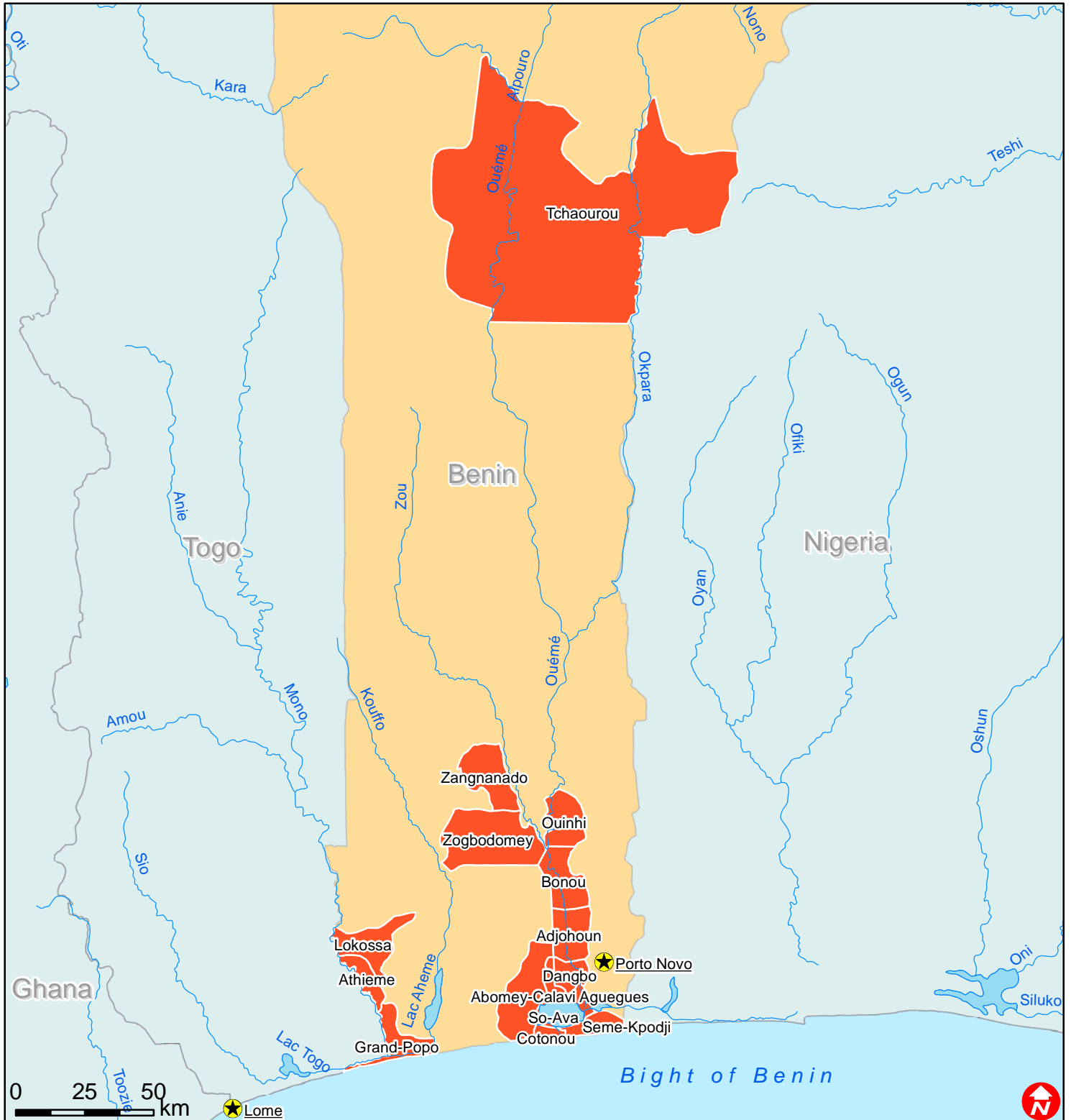
BUDGET SUMMARY

Budget Group	DREF Grant Budget	TOTAL BUDGET CHF
Shelter - Relief	22,000	22,000
Shelter - Transitional	0	0
Construction - Housing	0	0
Construction - Facilities / Infrastructure	0	0
Construction - Materials	6,000	6,000
Clothing & Textiles	87,900	87,900
Food	0	0
Seeds & Plants	0	0
Water & Sanitation	6,500	6,500
Medical & First Aid	0	0
Teaching Materials	0	0
Utensils & Tools	19,000	19,000
Other Supplies & Services & Cash Disbursements	0	0
Total Supplies	141,400	141,400
Land & Buildings	0	0
Vehicles	0	0
Computer & Telecom	0	0
Office/Household Furniture & Equipment	0	0
Medical Equipment	0	0
Other Machinery & Equipment	0	0
Total Land, vehicles & equipment	0	0
Storage	300	300
Distribution & Monitoring	5,250	5,250
Transport & Vehicle Costs	5,750	5,750
Total Transport & Storage	11,300	11,300
International Staff	0	0
Regionally Deployed Staff	0	0
National Staff	0	0
National Society Staff	16,013	16,013
Other Staff benefits	0	0
Consultants	0	0
Total Personnel	16,013	16,013
Workshops & Training	600	600
Total Workshops & Training	600	600
Travel	0	0
Information & Public Relation	0	0
Office Costs	750	750
Communications	1,200	1,200
Professional Fees	0	0
Financial Charges	0	0
Other General Expenses	1,200	1,200
Total General Expenditure	3,150	3,150
Cash Transfers to National Societies	0	0
Cash Transfers to 3rd parties	0	0
Total Contributions & Transfers	0	0

Program Support	11,210	11,210
Total Programme Support	11,210	11,210
Services & Recoveries		0
Shared Services		0
Total Services	0	0
TOTAL BUDGET	183,673	183,673



Benin: Floods



 Affected districts