

Emergency appeal



Guatemala: tropical storm Agatha

Emergency appeal n° MDRGT002
GLIDE n° TC-2010-000105-GTM
1 June 2010

This Preliminary Emergency Appeal seeks CHF 1,223,815 (USD 1,046,045 or EUR 862,265) in cash, kind, or services to support the Guatemalan Red Cross to assist 1,500 families (7,500 people) for six months; the operation will be completed by the end of November 2010. A Final Report will be made available at the end of February 2011 (three months after the end of the operation).

CHF 172,274 was allocated from the Federation's Disaster Relief Emergency Fund (DREF) to support this operation. Unearmarked funds to replenish DREF are encouraged.

Summary: Tropical Depression Agatha is the first tropical storm in 2010 in the Pacific Ocean region. In Guatemala, this high precipitation and low pressure storm has caused 92 deaths and led to 54 missing people; 85,537 people are affected, with another 21,868 at risk. Based on the situation, this Preliminary Emergency Appeal responds to a request from the Guatemalan Red Cross (GRC), and focuses on appropriate and timely humanitarian response to provide food and non-food relief items, emergency shelter and water and sanitation to 1,500 affected families (7,500 people).



The Guatemalan Red Cross carries out Evacuation activities in Coatepeque.

[<click here to view the attached Emergency Appeal Budget; here for a map of the affected area; or here to view contact details>](#)

The situation

Following the eruption of the Pacaya Volcano on 27 May 2010, Guatemala has been hit by a tropical storm which rapidly developed into a tropical depression, now named Tropical Depression Agatha. This storm, reaching an increased force on 29 May 2010, is the first tropical storm of 2010 in the Pacific Ocean region.

This tropical depression, which is characterized by heavy precipitation and low pressure centre in the air masses, has severely affected 39 percent of the national territory. High levels of affectation have been

reported in 129 municipalities in the departments of Escuintla, Suchitepéquez, Retalhuleu, San Marcos, Quetzaltenango, Huehuetenango, Totonicapán, Sololá, Chimaltenango and Guatemala. All of the country continues to experience heavy rainfall. The Guatemalan Meteorological Institute (INSIVUMEH) has registered the highest amount of rainfall since 1949 with precipitation reaching 200 to 359 mm between 25 and 28 May 2010.

As of 31 May 2010, the National Coordinating Body for Disaster Reduction (*Coordinadora Nacional para la Reducción de Desastres*- CONRED) has reported 92 deaths (49 in Chimaltenango, 26 in Guatemala, 8 in Quetzaltenango, 8 in Quiché and 1 in Jalapa). Rains have damaged at least 9,732 houses and currently have put another 5,395 homes at risk. The most recent CONRED figures state that 21 people have been injured and 54 people are missing; 85,537 people are affected and another 21,868 are at risk. Although the INSIVUMEH has reported a diminution of rainfall, continued rains have been forecast.

At least 150,000 people have been evacuated from their homes, of which 34,100 people are in temporary shelters. The high amount of precipitation has caused rising river levels and flooding in the Michatoya, Paz, Sis, Ocosito, Ostua and Villalobos rivers, among others. Flooding has affected major roads (the Palin-Escuintla highway is functioning with one-lane and the old road between Escuintla and Puerto San José has been closed). Blocked roads and damaged bridges have left some communities incommunicado. Traffic accidents have been reported and travel in general is difficult. La Aurora international airport in Guatemala City is closed to international flights for three days. Emergency humanitarian aid via helicopter, however, is being accepted. Due to this national emergency, schools and universities have suspended classes this week.

This tropical depression follows after the eruption of the Pacaya Volcano on 27 May 2010 for which the Guatemalan government declared state of calamity in the affected area. The Guatemalan government has extended the state of public calamity at national level and is soliciting international support to respond to the overlapping emergencies.

Coordination and partnerships

The Guatemalan Red Cross emergency response benefits from its established relationships with state institutions, including the National Coordinating Body for Disaster Reduction – CONRED and INSIVUMEH, as well as the agencies of the United Nations system in Guatemala. Coordination structures to respond to this emergency are in the process of being established with special attention to ensuring GRC's support and coordination with state-led actions.

The GRC is active in the National Emergency Operations Coordination (COE) via the National Secretariat for Disasters. Additionally, the National Society is a participating member in the Humanitarian Network, composed of the Executive Secretariat of CONRED, agencies of the United Nations and local and international NGOs. This network has been essential in ensuring constant monitoring of the situation at national level, as well as coordinating inter-institutional emergency relief actions. Two meetings have been held with all the participating members; these members have maintained regular communication and coordination since the initial emergency.

In response to the national authorities' initial needs assessment, and employing emergency state funds for the state of calamity, CONRED is providing food, blankets, clean water, hygiene items and medicines. The GRC response in the framework of this operation will supplement these actions to provide humanitarian assistance to the most vulnerable people and communities. The GRC overall plan of action targets 5,000 vulnerable families (25,000 people); this Preliminary Emergency Appeal seeks to assist 1,500 of these families (7,500 people) Additional support is being provided by partner National Societies and other agencies.

Red Cross and Red Crescent action

Immediately following the start of the increased precipitation, the Guatemalan Red Cross activated its Emergency Operations Centre (EOC). The EOC ensures coordination of the initial response actions at national level.

Members of the National Team for Damage and Needs Assessment (DANA) are conducting damage assessments in regions affected by floods and landslides. This data will supplement that provided by CONRED. This Preliminary Appeal is based on the initial figures provided from the field and the official CONRED evaluation of damage and needs. The GRC has drafted a Plan of Action, on which this preliminary

appeal is based, which will be adjusted as more complete information of damages and needs of the most vulnerable people and communities are further identified.

The National Society of Guatemala has a well-established and well-trained National Intervention Team (NIT), including several with experience as members of the Regional Intervention Team (RIT) deployed in other emergencies in the Americas. Currently NIT members have been deployed to the affected regions and have joined the Incident Command System also active in the emergency response.

The GRC is coordinating with the delegations of the Netherlands Red Cross, the Norwegian Red Cross and the Spanish Red Cross present pre-disaster in Guatemala to plan and implement the emergency relief actions. The Norwegian Red Cross has supported the logistics costs involved in the first 72-hours of the disaster starting with the Pacaya Volcano eruption. The Spanish Red Cross already has approved EUR 10,000 for the relief operation. Other National Societies have committed to supporting the GRC's operation. The Mexican Red Cross will support the GRC with a large truck with food and non-food relief items (food packets, personal and family hygiene kits).

The needs

The Guatemalan Red Cross is basing its beneficiary selection on the International Movement's Fundamental Principles, prioritizing the most vulnerable people and communities. The implementation also will be based on the application of the Sphere standards, the Code of Conduct for Disaster Relief, and other policies of the International Movement. This operation will benefit 1,500 families (7,500 people) with non-food relief items, emergency health care and shelter and water and sanitation. Details of the proposed actions are provided below in the respective objectives.

The proposed operation

The Guatemalan Red Cross operation in response to Tropical Depression Agatha will provide 1,500 families (7,500 people) with food and non-food relief items, emergency health care and shelter and water and sanitation. Special attention will be given to the most vulnerable households, including those with young children, elderly adults and families otherwise additionally challenged. Based on the information obtained by the National Society's DANA and NIT members in the field, and supplemented with CONRED data, this operation will focus on these interrelated priority areas which complement and/or further actions by State institutions and other actors in the affected regions. Furthermore, these are intervention areas where the GRC has proven expertise.

Based on the information obtained from Guatemalan Red Cross DANA, NITs and volunteers in the affected areas, as well as that from other State and non-State agencies, the National Society has organized this operation into two interconnected phases:

- The first phase is taking place now with the National Society is coordinating to establish an effective and efficient emergency response. CONRED, with GRC participation, has established the functioning of the National COE. This phase responds to the humanitarian needs identified in the alert issued by the National COE. The GRC has focused on search and rescue, pre-hospital health care, evacuation and organization of temporary shelters. At the local level, at least ten GRC branches have been activated in this emergency response. Five GRC branches (Tecún Umán, Retalhuleu, Mazatenango, Coatepeque and Quetzaltenango) have been fully activated whilst five are partially activated (Serchil, Tejutla, Sacapulas, Cobán, Concepción and Chiquirichapa). Many of these branches have been central to the establishment of local COEs as well as fomenting inter-institutional coordination and cooperation.
- The second phase are the actions to attend to the population's medium and long-term needs for humanitarian aid, emergency health and disaster preparation. All of these are detailed in the following objectives.

Relief distributions (food and basic non-food items)

Outcome: Affected families have access to food and non-food items to support their efforts to resume essential household activities.	
Outputs (expected results)	Activities planned
Up to 1,500 households (7,500 people) resume household activities through the distribution of one food kit, one	<ul style="list-style-type: none"> • Conduct rapid emergency needs and capacity assessments. • Develop a beneficiary targeting strategy and a registration system to deliver intended assistance. • Distribute relief supplies and control supply movements from point of

hygiene kit, one kitchen set and four blankets.	<p>dispatch to end user, prioritizing local tendering.</p> <ul style="list-style-type: none"> • Maintain inter-institutional coordination. • Monitor and evaluate the relief activities and provide reporting on relief distributions. • Develop an exit strategy.
---	---

This objective responds to initial need assessments conducted by the GRC. This operation will provide basic food and non-food items (NFIs) to 1,500 households (7,500 people) and in coordination with other institutions so as not to duplicate efforts.

Each household will receive one food kit, one hygiene kit, one kitchen set, and four blankets. The kitchen set contains 2 cooking pots (5 and 7 litres), a frying pan (2.5 litre), a kitchen knife, a wooden spoon, a stainless steel wire scouring pad and 5 each of the following: fork, spoon and knife. The hygiene kit contains 12 rolls of toilet paper, 5 bars of body soap, 5 tubes of toothpaste, 500 ml of shampoo, 5 razors, 1 package of sanitary pads (10), 5 hand towels, 2 deodorants and 2 combs.

As part of this objective, the GRC will distribute food packets for to 1,500 households. This food packet consists of local food which is culturally-appropriate and nutritious. Each household will be given 30 pounds of corn flour used for corn tortillas, 30 pounds of beans, 20 pounds of rice, 1 gallon of oil, 2 pounds of salt, 5 pounds of sugar and 5 pounds of a fortified cereal (Incaparina). The latter item is also combined with the work done under the hygiene objective, thus permitting training opportunities on a healthy and balanced diet employing local products.

Additionally, under the water, sanitation and hygiene objective each of the households will receive two jerry cans, a water bucket, two mosquito nets and water filters.

In addition to the aforementioned objectives, the Mexican Red Cross will donate and assist in the distribution of food items. The Guatemalan Red Cross respectfully requests that in-kind donations outside the framework of this appeal be coordinated before transportation to Guatemala. The GRC will tender items locally and thus support economic stimulation after this disaster.

Emergency shelter

Outcome: Ensure that the most vulnerable families have a healthy, safe and dignified shelter solution to preserve their physical and mental well-being and prevent the further deterioration of the humanitarian situation.	
Outputs (expected results)	Activities planned
Up to 500 households receive shelter kits to assist the building or repairing of emergency shelters.	<ul style="list-style-type: none"> • Conduct rapid emergency needs and capacity assessments. • Develop a community and beneficiary targeting strategy in coordination with local authorities and institutions. • Assess the extent of the emergency shelter needs, employing local suppliers when possible. • Provide technical support for the building or repairing of emergency shelters.

Combined with the distribution of other NFIs, this objective guarantees that 500 households (2,500 people) will receive shelter kits. These are standard IFRC shelter kits which contain 30 metres of rope, a handsaw, roofing nails and nails for wood, a shovel, a hoe, a claw hammer, and tie wire. These shelter kits establish a dignified emergency shelter solution and facilitate household recovery following the disaster; they also foment autonomy by which affected people can determine what type of housing to build.

Emergency health and care

Outcome: The health risks of the emergency on the affected population are reduced through provision of preventive and community-based health care, including sexual and reproductive health, hygiene promotion, disease prevention and psychosocial support to the affected communities.	
Outputs (expected results)	Activities planned
Comprehensive emergency health services are provided to at least 5,000 people in affected	<ul style="list-style-type: none"> • Conduct rapid evaluation of health needs. • Provide sexual and reproductive health care, including the distribution of condoms, prophylaxis kits for post-exposure and

communities and individuals with special attention to the priorities of the vulnerable population and employing a community-based healthcare approach.	<ul style="list-style-type: none"> • birth control pills. • Provide rapid tests and support for HIV/ AIDS testing.
Selected affected groups and communities receiving psychosocial support have increased their resilience and coping mechanisms.	<ul style="list-style-type: none"> • Training of GRC volunteers in skills in community based psychosocial support and psychological first aid. • Provide psychosocial support to targeted affected groups, communities and GRC volunteers.

The comprehensive health services provided under this objective directly respond to the initial assessments conducted by State institutions and the GRC. This health objective complements the emergency health services provided by the State and particularly focuses on reproductive and sexual health and psychosocial support for affected groups and individuals.

Initial assessments have found high levels of health problems throughout the country, including among people who are now located in collective shelters. Whilst initial health care is available in these shelters, the demand remains high, particularly related to gastrointestinal, dermatological and respiratory illnesses in adults as well as children.

This objective also draws upon the IFRC and GRC expertise in providing psychosocial support for people affected by disasters. This objective entails the training of GRC volunteers so these skills can be reproduced at the local level by branch volunteers, and particularly targeting adults and children living in collective shelters.

Water, sanitation, and hygiene promotion

Outcome: The health of affected communities is improved with the provision of clean water, minimum sanitation and hygiene promotion.	
Outputs (expected results)	Activities planned
<p>Appropriate water and sanitation materials will be provided to 1,500 families (7,500 people) which include two jerry cans, one water bucket, two mosquito nets and water filters.</p> <p>The health status of the population is improved through behaviour change and hygiene promotion activities.</p>	<ul style="list-style-type: none"> • Conduct rapid health and water and sanitation emergency needs and capacity assessments in coordination with the relevant local authorities. • Develop a community and beneficiary targeting strategy in coordination with local authorities. • Provide water to people located in communal shelters. • Support the building and use of community latrines. • Train and mobilize GRC volunteers in water, sanitation and hygiene promotion teams using the participatory hygiene and sanitation transformation (PHAST) methodology and a technical team in water evaluation. • Conduct hygiene promotion activities (personal and community hygiene, epidemic and vector control, solid and human waste disposal, disinfection of wells).

The tropical depression with its increased precipitation has destroyed water and sanitation infrastructure. In combination with the relief items listed previously, the GRC will provide two jerry cans, a water bucket, two mosquito nets and a one-month supply of water filters to 1,500 households (7,500 people).

Combining hygiene promotion with water and sanitation actions, the GRC will provide community-based training in water, sanitation and hygiene promotion to avoid the outbreak of water-related illnesses and epidemics.

Logistics

The Regional Logistics Unit (RLU) in Panama will support the Guatemala Red Cross Society in arranging the appropriate transportation and storage of the relief items. The RLU will coordinate procurement and mobilization of non-food items included in this emergency appeal.

Communications – Advocacy and Public information

The Guatemalan Red Cross has established an internal institutional objective to ensure that its national communication and dissemination area has the ability to respond efficiently to this emergency. This plan includes the production of press releases, maintaining local and national press contacts, creating radio and television spots on the GRC operation and other actions to provide needed information during the emergency and recovery phases.

The GRC has been providing information to national media, as well as to members of the International Movement since the emergency first began. Two situation reports have been written for the International Federation's Disaster Management Information System (DMIS) on this emergency.

Additionally, the GRC's national communication and dissemination area has produced two information bulletins which have been presented to local media outlets.

The Americas Zone information team has provided support to the GRC communication and dissemination area. This technical support is part of the cross-cutting actions to build upon the already significant skills of the National Society.

Capacity of the National Society

As mentioned above, the Guatemalan Red Cross prior to this emergency had established working relationships with state bodies and institutions involved in disaster management, including the Humanitarian Network and CONRED.

Since the start of the emergency, ten GRC branches (Tecún Umán, Retalhuleu, Mazatenango, Coatepeque and Quetzaltenango, Serchil, Tejutla, Sacapulas, Cobán, Concepción and Chiquirichapa) have been activated and are involved in the humanitarian emergency response. Many of these branches have been central to the establishment of local COEs as well as promoting inter-institutional coordination and cooperation. GRC volunteers and staff are working side-by-side with other actors to provide efficient and immediate humanitarian assistance. With well-established NIT teams, and members specifically trained and experienced in DANA, the National Society has well-qualified human resources.

The GRC has written a preliminary Plan of Action targeting 5,000 beneficiary families, of which 1,500 are included under this Preliminary Emergency Appeal; the plan draws upon the information gathered and its institutional strengths. This plan includes activities to strengthen the National Society's existing human and material resources. Capacity building at branch and community level is a cutting-edge component of this operation. Special attention will be given to activities to improve the GRC's disaster response and management capacities.

Capacity of the International Federation

The IFRC's Pan-American Disaster Response Unit (PADRU) has constant contact with the Guatemalan Red Cross. Working together, the GRC has foreseen the incorporation of a PADRU delegate during phase II of the operation. The delegate arrived in Guatemala City on 31 May.

Additionally, PADRU will continue to provide technical support, including for the tendering and purchasing processes within country. This support could include material and technical support for all of the objectives as needed.

Budget summary

See attached budget (Annex 1) for details.

Yasemin Aysan
Under Secretary General
Disaster Response and Early Recovery Division

Bekele Geleta
Secretary General

How we work

All International Federation assistance seeks to adhere to the [Code of Conduct for the International Red Cross and Red Crescent Movement and Non-Governmental Organizations \(NGO's\) in Disaster Relief](#) and the [Humanitarian Charter and Minimum Standards in Disaster Response \(Sphere\)](#) in delivering assistance to the most vulnerable.

The International Federation's vision is to inspire, encourage, facilitate and promote at all times all forms of humanitarian activities by National Societies, with a view to preventing and alleviating human suffering, and thereby contributing to the maintenance and promotion of human dignity and peace in the world.

The International Federation's work is guided by [Strategy 2020](#) which puts forward three strategic aims:

1. Save lives, protect livelihoods, and strengthen recovery from disaster and crises.
2. Enable healthy and safe living.
3. Promote social inclusion and a culture of non-violence and peace.

Contact information

For further information specifically related to this operation please contact:

- In Guatemala: Teresa J. Marroquin, Responsible for the GRC Disaster Response Office, phone: (502) 23816536; email: desastres@guatemala.cruzroja.org
- In Costa Rica: Fabricio López, Regional Representative for Central America and Mexico, phone: (506) 526-4092; email: fabricio.lopez@ifrc.org
- In Panama: Francisco Maldonado; Acting Head of the Pan American Disaster Response Unit (PADRU), phone: (507) 316 1001; fax: (507) 316 1082; email: francisco.maldonado@ifrc.org
- In Panama: Nelson Castaño, Disaster Risk Management Coordinator, phone: (507) 380-0250, email: nelson.castaño@ifrc.org
- In Geneva: Pablo Medina, Pablo Medina, Operations Coordinator; email: pablo.medina@ifrc.org; phone: (41) 79 2173376; fax: (41) 22 730 0395.
- For the mobilization of relief items and logistics inquiries: Miia Pollanen, Regional Logistics Unit Panama, phone: +507 67 475 676; fax +507 316 13 47; e-mail: miiia.pollanen@ifrc.org
- For resource mobilization inquiries: Zuleyka Maynard; Resource Mobilization Officer; phone: (507) 380 0250; email: zonerm.americas@ifrc.org

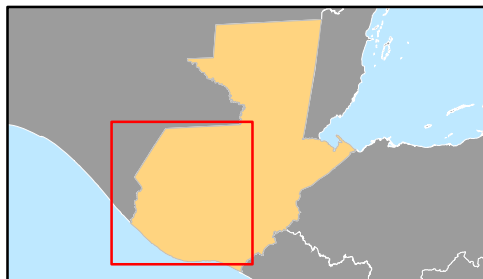
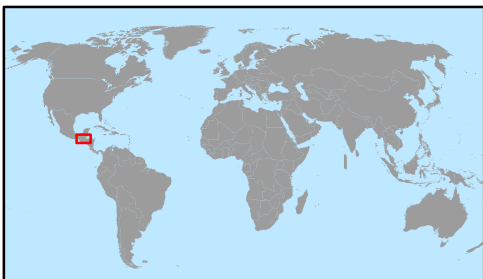
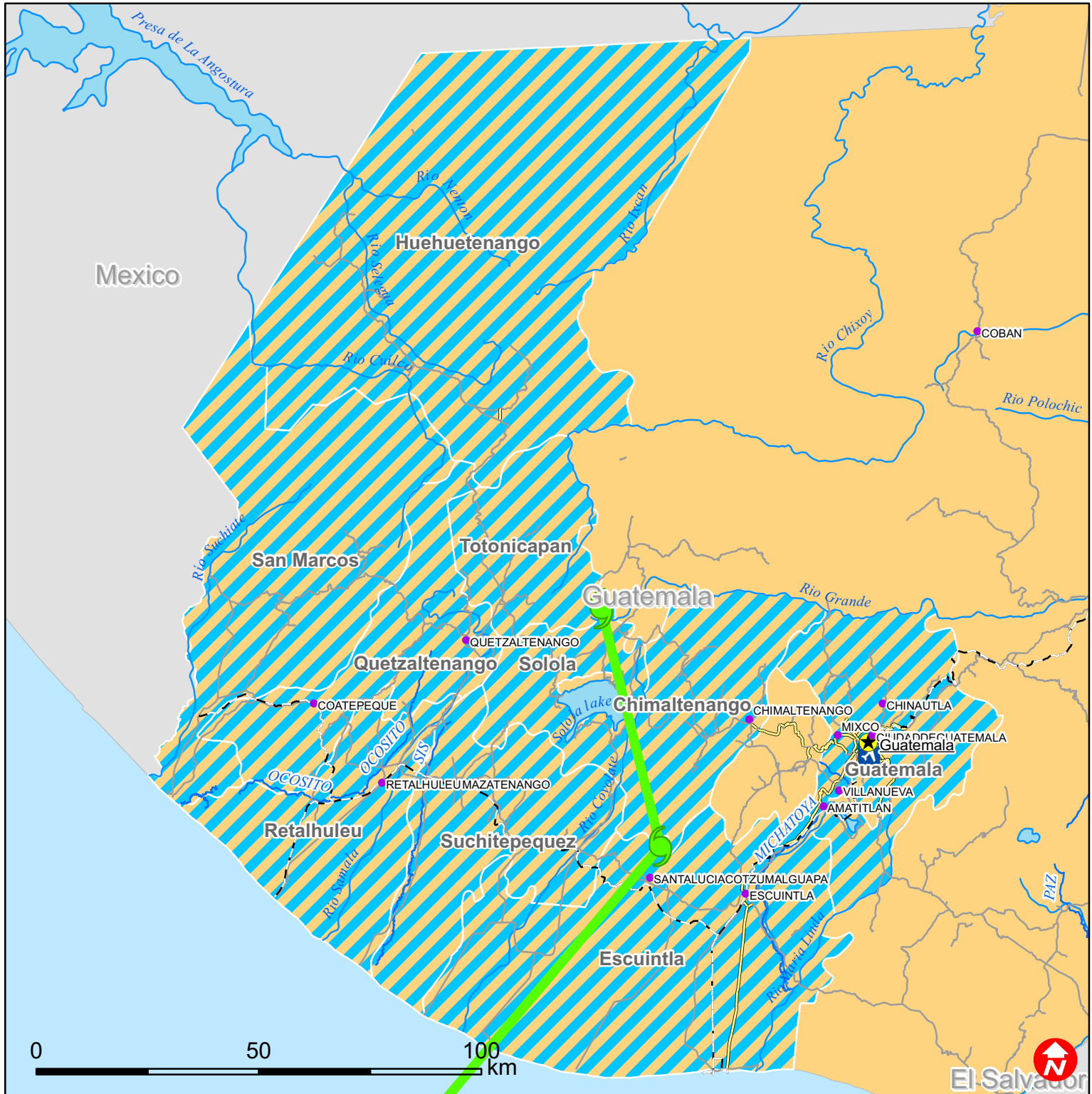
[<Preliminary Emergency Appeal budget and map below; click here to return to the title page>](#)

BUDGET SUMMARY

Budget Group	TOTAL BUDGET CHF
500 Shelter - Relief	289,660
501 Shelter - Transitional	0
502 Construction - Housing	0
503 Construction - Facilities / Infrastructure	0
505 Construction - Materials	0
510 Clothing & Textiles	64,198
520 Food	111,229
523 Seeds & Plants	0
530 Water & Sanitation	57,932
540 Medical & First Aid	92,691
550 Teaching Materials	0
560 Ustensils & Tools	72,994
570 Other Supplies & Services & Cash Disbursements	43,449
571 ERU (Emergency Response Units)	0
Total Supplies	732,154
580 Land & Buildings	0
581 Vehicles	34,759
582 Computer & Telecom	6,952
584 Office/Household Furniture & Equipment	5,793
587 Medical Equipment	0
589 Other Machinery & Equipment	0
Total Land, vehicles & equipment	47,504
590 Storage	0
592 Distribution & Monitoring	28,966
593 Transport & Vehicle Costs	23,173
Total Transport & Storage	52,139
600 International Staff	86,898
640 Regionally Deployed Staff	34,759
661 National Staff	23,173
662 National Society Staff	69,518
669 Other Staff benefits	0
670 Consultants	0
Total Personnel	214,348
680 Workshops & Training	12,513
Total Workshops & Training	12,513
700 Travel	8,690
710 Information & Public Relation	11,586
730 Office Costs	3,476
740 Communications	6,952
750 Professional Fees	0
760 Financial Charges	34,759
790 Other General Expenses	0
Total General Expenditure	65,464
830 Cash Transfers to National Societies	0
831 Cash Transfers to 3rd parties	0
Total Contributions & Transfers	0
599 Program Support	74,693
Total Programme Support	74,693
594 Services & Recoveries	25,000
799 Shared Services	0
Total Services	25,000
TOTAL BUDGET	1,223,815



Guatemala: Tropical storm Agatha



- Affected departments
- Agatha's path
- Main cities (> 20'000)
- Capitals
- Int. airport La Aurora
- Railroad
- Primary road with median
- Primary road without median

The maps used do not imply the expression of any opinion on the part of the International Federation of the Red Cross and Red Crescent Societies or National Societies concerning the legal status of a territory or of its authorities.

Map data sources: ESRI, DEVINFO, ISCGM, UNISYS, International Federation - MDRGT002.mxd