

Emergency appeal



International Federation
of Red Cross and Red Crescent Societies

Kenya: Floods

Preliminary Emergency appeal n°
MDRKE012

GLIDE n° FL-2010-000047-KEN

14 May 2010

This Preliminary Emergency Appeal seeks CHF 7,311,822 (USD 6,908,734 or EUR 5,231,857) in cash, kind or services to support the Kenya Red Cross Society (KRCS) to assist 111,743 beneficiaries for 6 months, and will be completed by the end of October 2010. A Final Report will be made available by end of January 2011 (three months after the end of the operation).



*Flooded village in Mogotio, South Rift
Photo by KRCS.*

Summary: This Preliminary Emergency Appeal is being launched to assist communities affected by floods in various parts of the country. This follows heavy rains that have resulted in flooding in various parts of the country after four successive seasons of drought causing moderate to severe food insecurity in the affected regions.

The onset of the long rainy season in Kenya has started with devastating impacts in the country. Since early onset in March, 66 people have been reported dead in various parts of the country. Over 7,525 households approximately 44,270 people have been displaced and 111,743 people have been affected by floods countrywide. Large tracts of land under cultivation and domestic livestock have also been destroyed by flood waters thereby threatening not only the food security of those affected but also compromising the livelihoods of these mostly rural communities.

The destruction of infrastructure such as bridges and roads has been widespread thereby slowing down relief efforts to the affected areas. At least 40 bridges have been destroyed and water systems affected in North Rift, South Rift, Upper Eastern, South Rift and North Eastern regions. Some 11 classes and an administration block have been destroyed in six schools across the country.

On 30 April 2010, Kenya Electricity Generating Company (Kengen) issued a flood alert warning responders of imminent floods due to release of excess waters since the dam was filling up. With an overspill of excess waters in Masinga Dam, over 150,000 people are likely to be affected in Garissa and Tana Delta.

Based on the situation, the KRCS aims to respond to the immediate needs of floods affected populations focusing on search and rescue operations, distribution of non-food items and implementing health, water

and sanitation interventions to mitigate the effects of the floods. Additionally, the National Society will endeavour to support early recovery processes among the population affected by the floods with an attempt to restore their livelihood.

[<click here to view the attached Preliminary Emergency Appeal Budget; here to link to a map of the affected area; or here to view contact details>](#)

The situation

The long rains season predicted in Kenya has resulted in enhanced rainfall over many parts of the country since its onset in March 2010. The Kenya Meteorological Department predicted enhanced rainfall in most parts of the country in January and February 2010. This trend is expected to continue until June 2010, with above average rainfall amounts already evident in many parts of the country. Enhanced rainfall amounts have been recorded in several areas in Coast, Rift Valley, North Eastern, Lake Basin, Central Highlands and Upper parts of Eastern Province resulting in flash floods and landslides; the most affected districts include Tana River, Malindi, Mogotio, Narok, Maragua, Makindu, Nyatike, Nyakach, Nyando and parts of Nairobi.

The KRCS assessments reports at least 66 deaths as a result of the rains either through floods, landslides or lightning. An estimated 7,525 households (44,270 people) have been displaced by floods from their homes. The total number of affected population in the country is 111,743 people.

Destruction of infrastructure by floods threatens the speed of humanitarian response due to inaccessibility of some heavily flooded areas. A major concern is the spread of gastrointestinal and vector borne diseases due to contamination of water sources and deteriorating hygiene conditions during floods. Furthermore, majority of those affected and displaced by floods are part of the population that was relying on relief aid following prolonged drought in 2009 that affected over 3.8 million people in pastoral, agro-pastoral and marginal agricultural areas.

Areas prone to mudslides and landslides have been put on high alert, among them Kakamega, Kisii, Murang'a and Nandi Hills.

Lower Eastern

Heavy rains in Nairobi, on 1 March 2010, displaced 46 households in Gando, Uthiru. The affected families were temporarily accommodated by friends, relatives and well-wishers. At least 30 pit latrines serving about 600 people in the area were flooded. Two people were drowned in flooded seasonal rivers in Kajiado. In Makindu, at least two houses were swept away by flood waters after River Kulie burst its banks on 10 March 2010. Sekeleni Primary School in Makindu was also affected and some latrines in Calvary Church collapsed. The Jomo Kenyatta International Airport (JKIA) area in Nairobi was hit by a hailstorm accompanied with strong winds. Trees fell on the roads causing a major traffic snarl up along Mombasa Road. Hailstorms caused extensive damage to cars.

Kitui and Kajiado districts have been placed under flood alert as a result of increasing rainfall amounts recorded in these areas.

Upper Eastern

In Isiolo, 200 households were displaced in Garfasa area in Garbatula District. On 4 March 2010, some 600 staff members working in tour lodges in Samburu were displaced after River Ewaso Nyiro broke its banks and flooded the Samburu National Park. Staff members sought refuge in nearby hills. In Moyale, strong winds in the area destroyed three classrooms and an administration block at St. Anne Primary School. At least 125 pupils and six teachers lost property of unknown value. In Dori Village in Moyale District, at least 66 people were displaced, 200 shoats and 80 cattle were swept by flood waters.

A rain storm in Marsabit District on 7 March 2010 resulted in death of a person and displacement of an estimated 420 households. The most affected areas include Burgabo, Tigo, Bubisa, Shegen and Chalbi. Two children drowned in Maua while playing in a water pool following heavy rains in the area.

Some 169 households were affected in Moyale after heavy rains in Ethiopia resulted in flash floods from 15 to 16 April 2010. Areas affected were Nana, Bor, Anona, Madoadi and Waye Goda, in Kinisa Location. A large water pan was destroyed by flood waters in the area causing destruction of a fruits and vegetable farm run by a self-help group. People living downstream of Wirwita Dam were advised by the Ethiopian authorities to evacuate from the area for fear of more floods.

From 20 to 30 April 2010, over 2,000 households were displaced and evacuated after heavy rains caused widespread floods in Moyale and Sololo Districts. At least 120 huts were destroyed in Gadel and Godom and over 1,500 livestock animals were swept away. Two people drowned in the area. Fapante dam, which had about 1.3 million cubic meters of water in Ethiopia, is swollen. A warning of imminent floods has been issued to residents living around the dam.

On 26 April 2010, some 35 households were displaced and moved to stay with relatives and friends in Mia Moja Village in Meru District. In Kangatia Village, one person was swept away by floods, but was rescued and taken to Nanyuki Hospital for treatment. A lorry was swept away by flash floods at Nyambera, Isiolo, on 30 April 2010. A female teacher who was among 35 passengers on board a bus, perished while 34 others were rescued by the locals and volunteers from KRCS Meru Branch. Those injured were transferred to Meru Hospital. A land cruiser was swept away by floods, but there were no casualties.

West Kenya (Nyanza and Western Provinces)

In Nyanza, most rivers have been flowing above normal level, with River Nzoia flowing at 2.8m - just 0.2m from its flood alert level. Areas affected by floods in this area have been placed on alert by the local administration.

In Rachuonyo, rooftops of five classrooms in Dol Primary School were blown away by wind that hit the area on 1 March 2010.

Trans Nzoia was hit by mild floods on 10 March 2010 after receiving mild rainfall for two days. Namajalala Location comprising four villages namely Maliki, Sabwani, Nasiada and Duyanji flooded after the swelling of River Nzoia due to heavy rains pounding in Mt Elgon. The KRCS Trans Nzoia in conjunction with the local administration commenced sensitisation of the locals on the importance of early evacuation. Rooftops of three classes of Rongo Primary School in Rongo were also blown off by strong winds.

At least 200 pupils resorted to studying under trees after strong winds blew the rooftops of their classes in Got Kachola Primary School in Migori.

On 8 March 2010, five fishermen died after their boats capsized in a rain storm in Lake Victoria. Four fishermen were rescued by the locals.

In Homa Bay, the KRCS disaster response team (DRT) provided the National Society's emergency hotline numbers to communities who were in the risk of floods in order to ensure early warning. A KRCS team assessed Kochia Location in Rangwe Division on 1 April 2010. The residents of East Kanyada and Kochia in Homa Bay have been put on a flood alert due to the heavy rains pounding the area.



*Flooded section in Nyando, West Kenya.
Photo by KRCS.*

In Kasipul Kabondo, a joint team consisting of Government of Kenya (GoK) and KRCS officials carried out a public sensitization drive in the area to train the villagers near Ranyiinya Hill on early response strategies in the event of a landslide. The villagers were also advised to be on the lookout for any potential dangers. Some 50 households have so far been evacuated to Uhuru market from Ranyiinya hill due to a high alert for a potential landslide.

On 25 April 2010 six households in Kanabi Division, West Rachuonyo District were affected by heavy rainfall that pounded the area and submerged some houses.

South Rift

On 2 March 2010, three people died in Rhoda area in Nakuru and Mogotio after they drowned in raging flood water. Some 90 households were displaced on 25 March 2010 after flash floods hit Mogotio, Kures and Molosirwe where 40 households, 30 households and 20 households were displaced respectively.



*A flooded section in Kikopeye, South Rift.
Photo by KRCS.*

North Eastern

Arabia town in Mandera District was hit by floods that displaced at least 350 households. Mandera town was hit by floods, leading to displacement of 800 households and death of three children. Some 169 latrines collapsed due to flooding thereby posing a health in the community. The main water system in the town was destroyed after flood waters swept away the main water grid pipes. Seven boreholes and five wells collapsed as a result of the floods. In response, KRCS Mandera Branch dispatched eight plastic toilet slabs and 20 tarpaulins to Arabia Boys Secondary School using a military vehicle. The Ministry of Health also responded by dispatching a nurse with drugs to attend to the affected population.

Dobale, Dhano and Gumar villages in Garissa District were hit by floods after heavy rains pounded the areas on 2 April 2010. At least 158hh were displaced by flash floods in Dadaab while 65 other others were displaced in Seretho on 20 April 2010.

Three houses were marooned and 15 people affected after flooding reported on 23 April 2010. The Moyale to Isiolo Road was also cut off making it impassable.

Some 40 households in Irimani and 35 households in Village Six were affected by flash floods which occurred in Bura Division on 25 April 2010. The flash floods were triggered by waters flowing from Ukambani Hills.

On 29 April 2010, heavy rains caused an earth dam in Shimbir Fatuma in Mandera to break releasing waters which displaced about 568 households and destroyed about 100 pit latrines. Over 420 livestock were swept by floods.

North Rift

River Terem in Mt Elgon burst its banks and destroyed the Terem-Emia Bridge thereby rendering the Kapsiro-Emia Road impassable. Residents have since been placed on high alert by local authorities.

Turkana East was hit by floods after Kerio River in Lokori burst its banks on 7 March 2010, destroying irrigation canals in Morulem and Lokubae irrigation schemes. The floods swept 1,006 shoats and three cows and cut off access to the Turkana-Marich Road. At least 600 households were displaced and over 300 households were ordered to evacuate to safer ground.

In Turkana North, a flash flood hit Kakuma Division of Turkana North following an increase in water levels on River Tarach on the 8th March 2010. At least six deaths reported from this incident with 400 households displaced. At least six other people also reportedly died as a result of the flood waters. Some 372 shoats were swept by flood waters in Turkana South District.

On 1 April 2010, at least 42 acres of land and an irrigation canal were destroyed following flooding in Jonuk Location, Turkana South District. In Pokot, seven households were displaced after their houses were swept

away by flood waters after Kerio River broke its banks. At least four deaths reported in Central Pokot following the flooding. A landslide occurred on 5 March 2010 in Anapngetuny, Tinderet in Nandi South, leading to death of two children and injury of one person who was admitted in hospital. Some two cows and one donkey were also lost in the landslide. A granary with 14 bags of 90kg maize was destroyed by the landslide. The area authorities have put 2,000 people on alert. The areas affected include Elelea, Mololeni and Iten which are located on the lower part of Cherangani hills.



Search and rescue following a landslide in Marakwet East.
Photo by KRCS.

Another landslide occurred in Marakwet East causing 12 deaths and injuring 10 others. Those injured were airlifted to the Moi Teaching and Referral Hospital, two of them critically injured. Some 150 households were ordered to evacuate the landslide area.

Most rivers in Nandi South, Nandi North, Marakwet, Turkana, Moi's Bridge, West Pokot, East Pokot and Central Province are flowing at dangerous levels and residents near the rivers have been put on high alert. In Nandi South, 15 bridges were swept away by flood waters, three houses were completely destroyed and three others partially destroyed.

A windstorm hit Keiyo in Tambach and Kamariny divisions on 4 April 2010, affecting at least 150 households in the most affected area of Anin Location. Two persons were injured after rocks in uphill areas dislodged and hit their houses. On 21 April 2010, five households were displaced following floods in Kakichuma Location in Malakisi Division, Bungoma District. The area is currently receiving enhanced rainfall. Two other deaths were reported in Bungoma on 27 April 2010 due to raging flood waters.

River Sabwani which originates from Mt Elgon and flows through Trans Nzoia District swell at Namajalala Village in Trans Nzoia, putting at risk some 2,000 households. The households will have to be evacuated to identified safer ground if heavy rains continue to be experienced in the area.

At least two women in West Pokot lost their lives on 27 April 2010 after River Konyana broke its banks and caused floods. The Turkwel River also burst its banks sweeping crops in farms near it. The rain storm also destroyed three houses displacing three households.

Coast

On 17 March 2010, floods hit Waldena area in Galole Division, Holo District. The Holo-Waldana Road was cut off, thereby hindering KRCS Coast Region's response. Due to inaccessibility, food supply in the area has been affected and thus doubled in prices. One kg of maize flour is now retailing at Ksh.100 from Ksh.80 while 1kg of sugar is retailing at Ksh.150, up from Ksh.80. The only health centres, Waldena Health Centre and Titila AIC Health Centre have insufficient medical supplies due to lack of medical supplies. Latrines in the area have collapsed and water sources have been contaminated. Diarrhoea cases have also been reported.

Since 21 March to 3 April 2010, heavy rains in the Tana Delta caused floods leading to heavy losses in Nanigi, Magogo, Waldena and Chwele locations where at least 165 households were displaced and 3,019 households were affected. At least five donkeys, camels and goats were swept by raging water.

Some 66 households were displaced in Malindi after River Athi broke its banks. The KRCS distributed non-food items (NFIs) to more than 325 people, who also received food from the Government. At least 97 households were marooned in flood waters.

At least 25 households were displaced by floods in Bura in Holo Village, Hilima Location following rains received in the area for two to three hours. The 70 people affected by floods have been evacuated to safer grounds. KRCS team has been sent to assess the area and a relief distribution will be carried thereafter.

Central

A heavy downpour left two houses in Thangira sub-merged in water and claimed one life on 4 April 2010. KRCS volunteers and Kakuzi Limited workers evacuated people at risk to safer grounds. A household was displaced after Mithi Swan Dam overflowed. Some 17 households were evacuated to safer grounds in this area while 67 households are at risk if heavy rains persist.

A school girl from Igikiro Primary School drowned in Saba Saba River while trying to cross the river which had increased water levels. A 9-year old girl drowned in a quarry filled with water.

On 25 April 2010, floods hit Timau area in Laikipia, displacing ten households and affecting 20 others. This occurred as a result of the heavy rains that are pounding the area.

A heavy downpour in Nyeri District on 5 May 2010 caused a landslide in the area, resulting in the death of at least two people in Mukurwe-ini. An additional 115 households have been evacuated to safer grounds for fear of continued landslides. On 5 May 2010 following heavy downpour in Nyeri, a household was covered by landslide resulting to the death of two peoples in Mukurwe-ini and 150hh moved to safer grounds.

Imminent Flooding in Tana River and Garissa Districts

On 30 April 2010, KENGEN issued an alert on the likelihood of Masinga hydroelectric dam reaching full supply level (fsl) and over spilling. This placed Garissa and Tana River Districts in direct line of flooding.

When Masinga reaches fsl, the excess water that will be released will lead to floods in the two districts. Over 150,000 persons are therefore at risk of displacement in Garissa and Tana River.

Based on the experience of the floods of 2006, Garissa and Tana River were affected with health, water, sanitation, food, and psychosocial needs arising. On 4 May 2010, Masinga and Kamburu dams with fsls of 1056.5m and had only 0.75m to reaching full supply level.

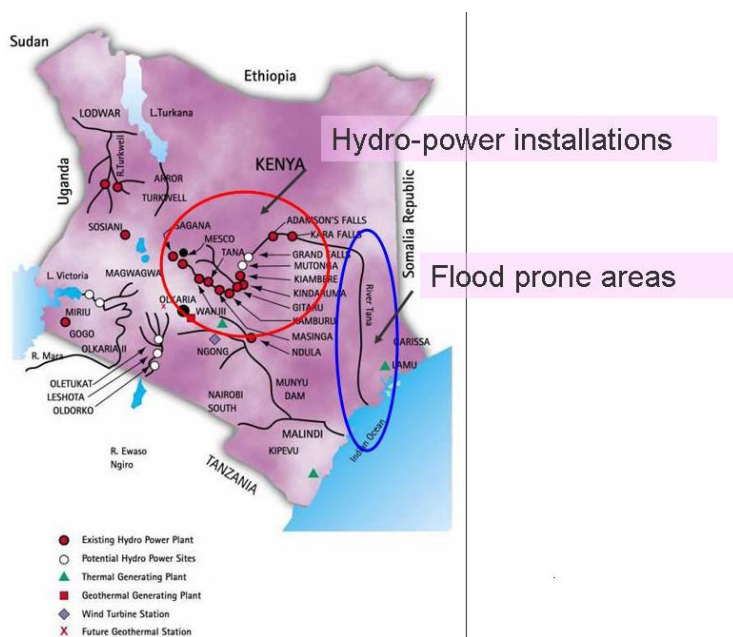
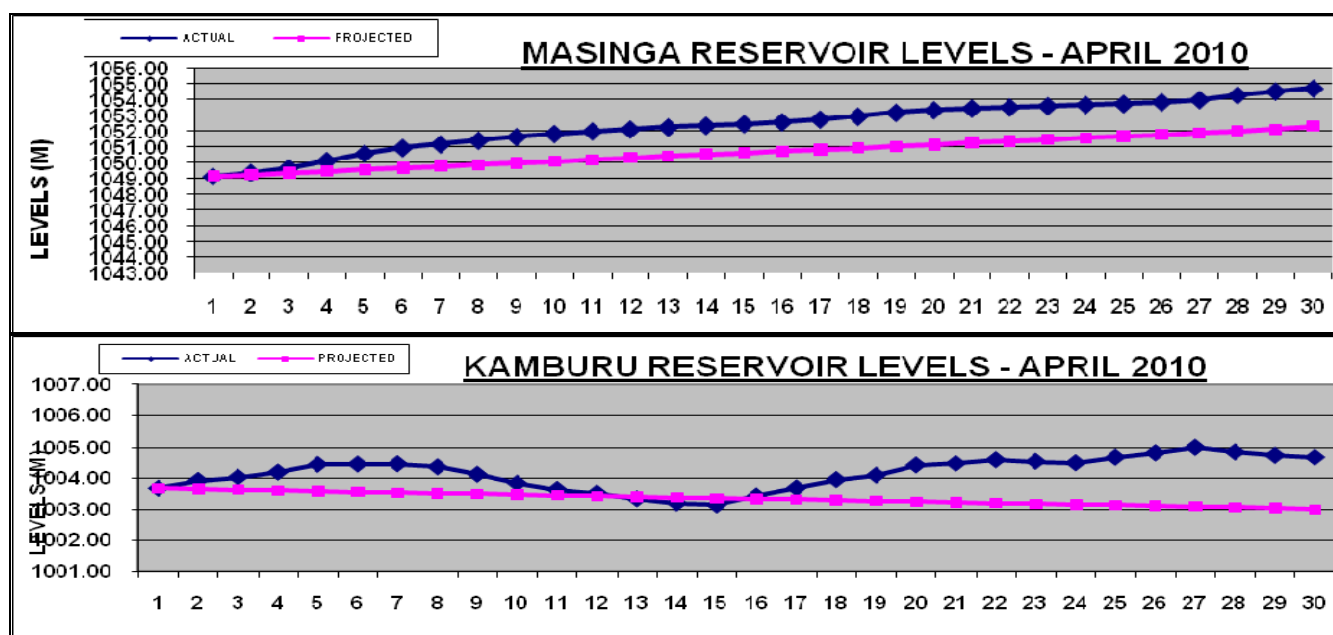


Figure 1 : Correlation between hydropower and Flood Risks in Tana River Basin



The flooding of the Tana River in December 2006, led to widespread flooding for 400km along the river on both sides. Large populations were displaced, food crops destroyed, infrastructure and livelihoods of approximately 753,000 people affected. It also led to outbreaks of Contagious Bovine Pleuro Pneumonia and Rift Valley Fever (RVF).

Figure 2: Statistics of populations affected by floods in Kenya before overflow of water in Masinga Dam

| Region | Dead | Displaced Households | Persons displaced | Affected Persons |
|---------------|-----------|----------------------|-------------------|------------------|
| North Rift | 35 | 1,168 | 7,008 | 17,508 |
| South Rift | 8 | 90 | 540 | 1,770 |
| West Kenya | 5 | 118 | 512 | 2,882 |
| Upper Eastern | 7 | 2,575 | 15,450 | 35,910 |
| Lower Eastern | 2 | 48 | 288 | 888 |
| Coast | 1 | 911 | 5,646 | 22,309 |
| Central | 5 | 174 | 180 | 2,400 |
| North Eastern | 3 | 2,441 | 14,646 | 28,076 |
| Total | 66 | 7,525 | 44,270 | 111,743 |

Data covers March 2010 to 6 May 2010

Health and Nutrition

Over the past three years, Kenya has been grappling with outbreaks of Cholera and dysentery among other diarrhoeal diseases. Some districts currently affected by floods have had active Cholera transmission over the past three months. In situations of poor sanitation and overcrowding in displacement centres, there is a high risk of recurrence of outbreaks of communicable diseases considering the disease carriers within the population.

Lack of access to safe water is expected to complicate the population displacement. Contamination of communal water points has been reported in the floods affected districts following collapse of pit latrines used for disposal of human waste, overflowing of latrine contents as a result of the rise in water table due to soil saturation. This situation is expected to further sustain transmission of cholera and other diarrhoeal

diseases especially among the communities displaced by floods and those indirectly affected and without access to safe water and adequate sanitation facilities. The recent outbreaks of measles and polio is likely to increase transmission in displacement camps, especially among the communities that reported high levels of malnutrition caused by the just-ended drought and famine in some of the floods affected areas. The whole scenario is complicated by the prevailing poor access to health care services by the affected population. Some of the health facilities are also poorly equipped in terms of drugs, medical supplies and human resources to handle such health crisis.

Flooding has in the past been known to increase the risk of outbreaks of diseases transmitted by arthropod vectors including malaria, dengue fever and Rift Valley Fever. In 1997 and 2006 floods (though related to the El Nino cycles), the RVF caused major outbreaks in livestock and human populations, causing widespread panic, loss of livelihoods to pastoralist communities due to livestock deaths, strained health care due to increased morbidity and loss of human lives. The disease also caused disruption of local economies following the quarantines in livestock movements and a subsequent ban on consumption of animals and animal products.

Water and Sanitation

Due to displacement of people and damage to relevant infrastructure in the affected areas, access to safe water and adequate sanitation facilities has been compromised. Most of the displaced population do not have access to safe drinking water and appropriate sanitation facilities posing a health risk to the affected population. This is likely to have resulted to the upsurge of diarrheal cases already reported in those affected places. Some of the effects that have come about as a result of the floods include collapsed latrines in parts of the Coast Region like Waldera (Hola District), Turkana and Narok which has resulted in faecal contamination of water sources. The Masinga Dam is nearly filling up and the gates are likely to be opened any time, consequently flood alerts have been issued for the Garissa and/or Tana River areas which could impact negatively on the fragile water sources within this areas and lead to more latrines collapsing.

Coordination and partnerships

The KRCS co-chairs the Rapid-Onset Disaster Committee with the Office of the President. The Committee is a body that comprises international non-governmental organization (INGOs), United Nations agencies and Government ministries. The KRCS is also a member of the Kenya Food Security Steering Group (KFSSG), which is the main organ for coordination of food security matters. During emergencies, KRCS holds regular briefings and works with Red Cross and Red Crescent Movement partners including Partner National Societies (PNS), the International Committee of the Red Cross (ICRC) and the International Federation of Red Cross and Red Crescent Societies (IFRC). The East Africa Regional Secretariat provides technical support. KRCS is currently working with the Ministry of Special Programmes, National Disaster Operations Centre (NDOC) in the Office of the President, Kenya Wild Life Service, the Kenya Police and other Government departments during disaster preparedness and response.

The National Society has built its preparedness and response capacity from challenges and experiences of past disaster operations including floods, drought and 2007/08 and post election violence. All mitigation programmes are designed with sufficient consultation at community level, using and enhancing community structures where possible, and ensuring an equal representation of men and women at decision-making bodies.

The KRCS has placed its Disaster Response Teams (DRTs) on standby in all flood-prone zones. The Disaster Management Department through its Emergency Operations Centre (EOC) is working with the Kenya Meteorological Department (KMD), KENGEN, KRCS regions and branches, Tanzania Meteorological Agency (TMA), Kilimanjaro and Tanga branches of Tanzania Red Cross National Society, other regional and international weather centres to forecast, monitor and issue alert on floods.

Daily information on water levels and water influx rates from KENGEN reservoirs' control rooms are received, interpreted and conveyed down to the KRCS Regional and Branch offices. The information then informs the community based EWS already in place in most parts of the country with the help of disaster risk reduction (DRR) activities of KRCS. The National Society in collaboration with other stakeholders monitors and forecasts threats posed to various communities. This is complemented by updates on flood situation around the country through radio, Global System for Mobile (GSM) and Internet communication from the KRCS branches.

The KRCS headquarters through its countrywide branch network will coordinate the floods operation activities.

Red Cross and Red Crescent Action

The KRCS staff and volunteers are working in collaboration with local elders and the Government line ministries in conducting assessments to establish extent of damage and number of people affected by the floods. KRCS has responded to the areas affected by floods in various parts of the country through distribution of the National Society's prepositioned NFIs.

figure 3: KRCS NFI distribution to date by region as at 28 April 2010

| No | Region | Tarpaulins | Blankets | Kitchen sets | Mosquito nets | Jerry cans | Bar soap |
|----|---------------|--------------|--------------|--------------|---------------|--------------|--------------|
| 1 | North Rift | 580 | 1,260 | 580 | 1,260 | 580 | 1,260 |
| 2 | South Rift | 197 | 394 | 197 | 394 | 394 | 394 |
| 3 | West Kenya | 0 | 0 | 0 | 0 | 0 | 0 |
| 4 | Upper Eastern | 0 | 0 | 0 | 0 | 0 | 0 |
| 5 | Lower Eastern | 50 | 100 | 50 | 100 | 100 | 100 |
| 6 | Coast | 554 | 1,108 | 554 | 1,108 | 1,108 | 1,108 |
| 7 | Central | 0 | 0 | 0 | 0 | 0 | 0 |
| 8 | North Eastern | 0 | 0 | 0 | 0 | 0 | 0 |
| | Total | 1,381 | 2,862 | 1,381 | 2,862 | 2,182 | 2,862 |

The KRCS has placed all its Disaster Response Teams in the flood zones on high alert. The EOC of KRCS is working round the clock with the KMD, the KENGEN, the KRCS Regional and Branch centres, and weather agencies in neighboring countries to forecast, monitor and issue flood alerts. KRCS also continues to receive daily water levels and rates from KENGEN reservoirs' control rooms.

This data enables the centre to forecast flooding that may be triggered by release of spill water from the Hydro-Electric Dams (HEDs). This data is used to project rainfall in the highlands where the rivers to the HEDs originate.

The Needs

Beneficiary selection

Beneficiaries will be identified through disaster risk mapping, floods rapid and detailed impact assessments which will be conducted in affected areas and those at risk of floods. The affected persons will be registered and targeted for assistance.

Immediate needs

Relief

The KRCS will continue with needs assessment to establish extent of damage following the effects of floods. Thousands of people have been displaced and houses submerged or damaged. Farms have also been submerged leading to destruction of crops, livestock feed and grazing land. Infrastructure has been destroyed affecting access to essential services like markets and schools. This has led to loss of lives and livelihood and increased vulnerability. Priority relief needs include food and non-food items to affected populations. There will be need for search and rescue services to recover bodies and restore family links. Other needs will be the sustainable food supply and small scale food production measures among the beneficiaries. Training needs will also be inevitable for quick and efficient utilization of basic agronomic practices for increased yield and post harvest management to reduce harvest losses and storage.

Emergency Health and Care

Kenya's health care system is expected to be severely affected by increased service demand attributed to the effects of floods which include population displacement and deaths, destruction of physical infrastructure and expected increase in injuries. This will further stretch the available resources, given the current challenges in health care financing and it is expected to ground health care operations in affected districts, with a ripple effect countrywide due to reallocation of the meager resources. With the expected epidemics including malaria, RVF, cholera and dysentery, support to health service delivery to affected populations will be inevitable if excess morbidity and mortality is to be avoided. KRCS proposes to support delivery of preventive and promote health services for prevention of epidemics, support the strengthening of community based surveillance for early detection of outbreaks through community health strategy, support in procurement and distribution of emergency supplies and enhance community health education. This will include offering psychosocial support to affected population.

Water and Sanitation

Due to displacement of people and damage to relevant infrastructure in the affected areas, access to safe water and adequate sanitation facilities has been compromised. Effects as a result of the current floods include collapsed latrines in parts of the Coast, North Eastern, Nyanza and South Rift regions resulting in contamination of water sources.

There is need to enhance the target communities' access to safe water and proper sanitation as the community will largely rely on water from surface sources which are likely to be contaminated. Open defecation practiced by the community will exacerbate the situation further.

The proposed operation

Goal: To contribute to reduction of deaths, suffering and restoration of livelihood targeting 111,743 floods affected population country wide.

Relief

The National Society will continue to conduct rapid flood risk assessment that will lead to the production of flood risk maps and parameters. The assessment findings will be used to establish flood evacuation routes and centres. The KRCS will preposition relief items and resources in areas affected to ensure that such areas continue to receive relief aid. At the same time, KRCS will also preposition search and rescue equipment in strategic areas in relation to the floods. Among displaced population, the Society will coordinate and solicit for food items from the Government through the ministry of special programmes and World Food Programme (WFP). The KRCS will also distribute non-food items which will include kitchen sets, shelter materials, clothing, mosquito nets, soaps and water jerry cans to the most vulnerable. The National Society has worked very closely with United Nations International Children's Fund (UNICEF) in prepositioning of NFIs (family kits, learning tents and water jerry cans) in West Kenya (Nyanza and Western provinces). This will be informed by detailed needs assessment by a multi-sector and all inclusive team across the various stakeholders in disaster management. This includes other non-governmental organizations (NGOs) and government line ministries across the country. Continuous awareness and sensitization of the public will be ensured through community meetings and use of local media.

Early Recovery

In order to enhanced food security and economic empowerment, KRCS will spearhead recovery efforts through distribution of seeds among farming communities and restocking of livestock among pastoralists. This will be aimed at restoring destroyed means upon which the communities depended upon before the devastating effects that were brought about by the floods. It is estimated that 9,774 household among the farming communities will be supported with a total of 120 Metric tons of seed (Maize and Cowpea) and 2,500 households among the pastoralist supported through restocking of 20 shoats and a donkey for each household. The recovery process will also seek to provide skills on agronomic practices to address long term food security and nutrition and basic animal husbandry. Beneficiaries among the farming groups will also receive post harvest management training and food preservation while the animal keepers on the other hand

trained on basic animal disease control and supported with vaccination to avoid animal disease epidemics during the restocking exercise.

On water provision, the National Society will rehabilitate and/or drill eight boreholes and/or shallow wells and support pipeline extension from existing boreholes. Water management committees will be set up at the rehabilitated and/or newly drilled water points and trained on management and organization to ensure sustainability. During the early recovery period, benefiting communities will be supported to link with appropriate support agents among the various development players, government bodies and other NGOs in order for them to move towards full recovery phase by themselves.

Water and Sanitation

The proposed activities for water and sanitation will be aimed at ensuring access to sustainable safe water, proper sanitation facilities and promotion of hygiene to prevent water borne diseases. The National Society will distribute household water filters, chlorine tablets for household water treatment, sanitation platforms and tarpaulins for latrines. The KRCS will also provide emergency water supply through five mobile water treatment plants. Participatory hygiene and sanitation transformation (PHAST) training will be carried out to sensitize the affected communities on proper hygiene and sanitation practices. To further strengthen this training, various information, education and communication (IEC) materials like T-shirts and posters with positive hygiene messages will be designed and produced.

Provision of Basic Health Care and Support

With the above described poor health indicators compounded by vast distances to already stretched health facilities that have affected health service delivery to the communities, there is the felt need to establish and strengthen community and/or village health structures and systems. These structures and systems will deliver the health services to the far, hard to reach vulnerable population with suitable health services and products. Key interventions include child survival approaches in immunization coverage and nutrition, hygiene promotion, reproductive health issues including HIV and AIDS and psychosocial support. Community mobilization and sensitization will be undertaken by KRCS volunteers and MoH Community Health Extension Workers (CHEWs) to ensure sustainability. The National Society will also deploy basic health emergency response units in hard to reach areas in addition to implementation of mobile medical outreaches in affected areas. To support this, interagency health kits, drugs and medical supplies will be procured.

| Relief | |
|---|---|
| Objective 1: To assist 44,270 displaced persons through provision of non-food items in the affected areas to reduce their vulnerability. | |
| <p>Expected Results</p> <ul style="list-style-type: none"> • Persons affected by floods evacuated to higher grounds. • Non-food items distributed to communities affected by floods. • Improved links with line ministries and other relevant stakeholders. • Enhanced capacity of disaster response teams to ensure effective and efficient response. | <p>Planned Activities</p> <ul style="list-style-type: none"> • To continue conducting rapid needs assessments. • To conduct search and rescue operations. • To distributed non-food items to 7,525 households. • To support EOC operations. • To support standby teams in all regions for rapid deployment. • To equip the search and rescue teams with basic rescue gear. |

| Early Recovery | |
|---|--|
| Objective 2: To assist 7,525 displaced households towards early recovery from the effects of floods. | |
| Expected Results | Planned Activities |
| <ul style="list-style-type: none"> Enhanced food production among farming communities affected by floods to contribute towards sustainable food security Support pastoral communities affected by floods to early recovery through restocking with a viable herd size | <ul style="list-style-type: none"> Distribution of crop production inputs to the most vulnerable members of the farming community. <ul style="list-style-type: none"> 120 Mt of Seed Training on basic agronomic practices to enhance crop yield. Training on post harvest management to reduce crop losses including storage. Restocking to 2,500 household with 20 shoats and a donkey each among the most vulnerable members of the pastoral community Support vaccination of 50,000 shoats and 2,500 donkeys during distribution to the affected communities. |

Water, sanitation and hygiene promotion

| | |
|--|--|
| Objective 3 (a): Improve access to clean, safe and sustainable water facilities for 111,743 flood affected persons. | |
| Expected results | Activities planned |
| <ul style="list-style-type: none"> Improved access to safe water. | <ul style="list-style-type: none"> Rehabilitate and/or drill and equip eight boreholes and/or shallow wells. Lay 20 KMs of pipeline from the boreholes to enhance water supply to target community. Form and train eight water management committees to manage the constructed and/or rehabilitated water facilities. Distribute water treatment products to 7,344 vulnerable households. Establish and/or strengthen community water committees within the rehabilitated water points. Deployment of five mobile water treatment units. |
| Objective 3 (b): To promote hygiene and appropriate gender responsive sanitation for an estimated 111,743 floods affected persons. | |
| Expected results | Activities planned |
| <ul style="list-style-type: none"> Improved health status of the population through behaviour change and hygiene promotion activities. Key hygiene messages disseminated effectively at household and/or community level and positive hygiene behaviour adopted by targeted households. Sanitation access improved. | <ul style="list-style-type: none"> Train 40 volunteers and/or TOTs on PHAST methodologies. Conduct continuous hygiene promotion and awareness campaigns among the affected individuals. Produce and distribute generic hygiene promotional IEC materials. Construction of 500 emergency latrines. Construction of 120 VIP latrines. Production and distribution of sanplats. |

| Health and Care | |
|--|--|
| Objective 4: To contribute to reduction of morbidities and mortalities among 111,743 floods affected beneficiaries by strengthening community health structure and systems. | |
| Expected Results | Activities planned |
| <ul style="list-style-type: none"> Enhanced community awareness on common communicable disease prevention and control. Increased access to basic health care services. Enhanced coping mechanism for survivors (as part of psychosocial support). | <ul style="list-style-type: none"> Capacity enhancement for 250 KRCS Volunteers and 50 Ministry of Health - CHEWs. Stakeholder sensitization and/or advocacy for MoH and KRCS BMC workshops (15 pax). Development of 250 volunteers and/or CHWs kit with community health manuals and key health messages. Design and production of assorted IEC materials targeting common diseases prevention. Deploy health Emergency response unit in 2 most affected districts Procure and preposition 5 IEHK and 5 supplementary modules. Procure and preposition 10 cholera kits and malaria module. Procure and preposition 400 occupational and 600 volunteer First Aid kits. Procure and pre-position 5 reproductive health kits. Provision of post trauma counselling for survivors and responders (KRCS volunteers). Procurement and distribution of 3,000 dignity kits to affected population. |

Communication – Advocacy and Publicity

The KRCS Public Relations Office aims to coordinate various awareness and publicity activities, to sensitize the public and media on the situation on the ground and humanitarian response.

Planned Activities

- Produce weekly floods information bulletins and share with relevant stakeholders.
- Facilitate media field trips to floods affected areas to create awareness.
- Monitor media coverage of floods and floods recovery activities.
- Produce IEC materials on floods disaster preparedness and response.
- Produce and air radio and/or TV spots, print adverts and/or supplements on KRCS interventions.
- Purchase a back up video camera, accessories and multimedia equipment to facilitate documentation.

Capacity of the National Society

- Kenya Red Cross Society has good response capacity and the ability to make rapid deployment for affected areas as well as put in place high readiness capacity for areas yet to be affected. With 67 branches, eight regional offices and 70,000 volunteers, the National Society has capacities at regional levels to make an initial response which can later on be reinforced by headquarter re-enforcement both in human and material terms.
- Kenya Red Cross society has undertaken recovery programmes following onset of disasters, including floods recovery programmes after the 2006 floods. The National Society has developed a good track record for using recovery programmes to enhance relief development continuum. This capacity cuts across human, material, as well as planning and mobilization of communities for risk reduction and development. The competency of the staff and volunteers cuts across relief, rehabilitation and development and ability to address all aspect of the disaster management cycle with proven track record.

Monitoring and Evaluation

The Monitoring and Evaluation unit works closely with regions and branches countrywide in the targeted areas to ensure quality delivery of humanitarian assistance to the flood victims. The National Society together with members of the sudden onset disaster committee and the IFRC Zone secretariat technical personnel will assume the overall monitoring and evaluation role to ensure accountability, timely and quality response.

During the operation the main activities under Monitoring and Evaluation include;

- Measuring the impact, effectiveness, efficiency, relevance and timeliness of various interventions of the operation to the affected communities.
- Documenting the best practices and lessons learnt for sharing internally and externally.

Capacity of the Federation

The Federation's East Africa Regional office is located in Kenya and will provide technical support to the operations through its Disaster Management Department. The Food Security Advisor for the East Africa Region will assist with implementation of activities and monitoring interventions. Additional technical support in Health and water and sanitation (WatSan) are also in place at the East Africa Regional office.

Budget summary

See attached budget (**Annex 1**) for details.

Yasemin Aysan
Under Secretary General
Disaster Response and Early Recovery Division

Bekele Geleta
Secretary General

How we work

All International Federation assistance seeks to adhere to the [Code of Conduct for the International Red Cross and Red Crescent Movement and Non-Governmental Organizations \(NGO's\) in Disaster Relief](#) and is committed to the [Humanitarian Charter and Minimum Standards in Disaster Response \(Sphere\)](#) in delivering assistance to the most vulnerable.

The International Federation's vision is to inspire, encourage, facilitate and promote at all times all forms of humanitarian activities by National Societies, with a view to preventing and alleviating human suffering, and thereby contributing to the maintenance and promotion of human dignity and peace in the world.

The International Federation's work is guided by [Strategy 2020](#) which puts forward three strategic aims:

1. Save lives, protect livelihoods, and strengthen recovery from disaster and crises.
2. Enable healthy and safe living.
3. Promote social inclusion and a culture of non-violence and peace.

Contact information

For further information specifically related to this operation please contact:

- **In Kenya:** Mr. Abbas Gullet, Secretary General, Kenya Red Cross Society, email: gullet.abbas@kenyaredcross.org Phone 254.20.60.35.93; 254.20.60.86.81/13 Fax: 254.20.60.35.89
- **In Kenya:** East Africa Regional Office (Nancy Balfour, Disaster Management Coordinator, East Africa, Nairobi), phone: +254.20.283.5208; Fax: + 254.20.271.2777; email: nancy.balfour@ifrc.org
- **In Kenya:** East Africa Regional Office (Alexander Matheou, Regional Representative, East Africa, Nairobi), phone: +254.20.283.5124; fax: 254.20.271.27.77; email: alexander.matheou@ifrc.org
- **In South Africa:** Africa Zone Office (Dr. Asha Mohammed, Head of Operation, Africa Zone, Johannesburg), +27 11 303 97 00, Fax: + 27 11 884 3809.; email: asha.mohammed@ifrc.org
- **In Geneva:** Pablo Medina, Operations Coordinator for Eastern Africa; phone: +41.22.730.43.81; fax: +41 22 733 0395; email: pablo.medina@ifrc.org

[< Preliminary Emergency Appeal budget and map below; click here to return to the title page >](#)

International Federation of Red Cross and Red Crescent Societies

MDRKE012 - KENYA FLOODS

PRELIMINARY EMERGENCY APPEAL BUDGET TOTAL

Multilateral Response

7,311,823

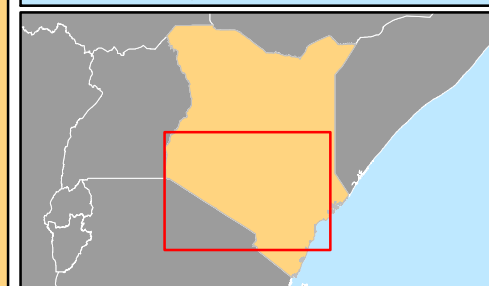
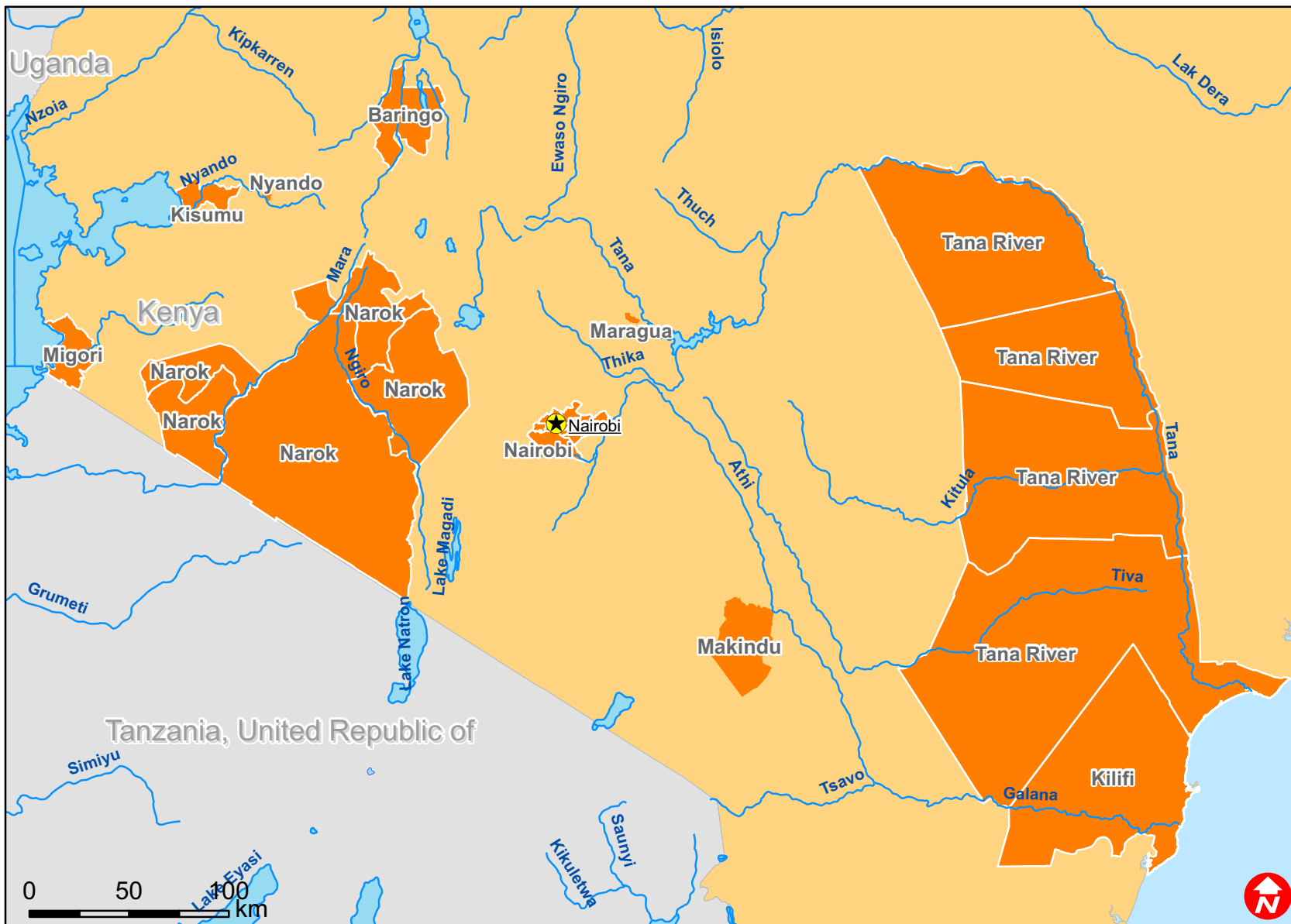
7,311,823

BUDGET SUMMARY

| Budget Group | Multilateral Response | Inter-Agency Shelter Coordination | Coordinated Support (ERUs) | TOTAL BUDGET CHF |
|--|-----------------------|-----------------------------------|----------------------------|------------------|
| Shelter - Relief | | | | 0 |
| Shelter - Transitional | | | | 0 |
| Construction - Housing | | | | 0 |
| Construction - Facilities / Infrastructure | | | | 0 |
| Construction - Materials | | | | 0 |
| Clothing & Textiles | 259,498 | | | 259,498 |
| Food | | | | 0 |
| Seeds & Plants | 166,893 | | | 166,893 |
| Water & Sanitation | 1,063,772 | | | 1,063,772 |
| Medical & First Aid | 472,185 | | | 472,185 |
| Teaching Materials | | | | 0 |
| Ustensils & Tools | 298,847 | | | 298,847 |
| Other Supplies & Services & Cash Disbursements | 2,959,411 | | | 2,959,411 |
| ERU (Emergency Response Units) | | | | 0 |
| Total Supplies | 5,220,606 | 0 | 0 | 5,220,606 |
| Land & Buildings | | | | 0 |
| Vehicles | | | | 0 |
| Computer & Telecom | 1,628 | | | 1,628 |
| Office/Household Furniture & Equipment | 1,628 | | | 1,628 |
| Medical Equipment | | | | 0 |
| Other Machinery & Equipment | | | | 0 |
| Total Land, vehicles & equipment | 3,256 | 0 | 0 | 3,256 |
| Storage | 20,353 | | | 20,353 |
| Distribution & Monitoring | 181,018 | | | 181,018 |
| Transport & Vehicle Costs | 123,948 | | | 123,948 |
| Total Transport & Storage | 325,319 | 0 | 0 | 325,319 |
| International Staff | | | | 0 |
| Regionally Deployed Staff | | | | 0 |
| National Staff | 168,521 | | | 168,521 |
| National Society Staff | | | | 0 |
| Other Staff benefits | | | | 0 |
| Consultants | | | | 0 |
| Total Personnel | 168,521 | 0 | 0 | 168,521 |
| Workshops & Training | 364,247 | | | 364,247 |
| Total Workshops & Training | 364,247 | 0 | 0 | 364,247 |
| Travel | 63,162 | | | 63,162 |
| Information & Public Relation | | | | 0 |
| Office Costs | | | | 0 |
| Communications | 20,353 | | | 20,353 |
| Professional Fees | | | | 0 |
| Financial Charges | | | | 0 |
| Other General Expenses | 744,724 | | | 744,724 |
| Total General Expenditure | 828,239 | 0 | 0 | 828,239 |
| Cash Transfers to National Societies | | | | 0 |
| Cash Transfers to 3rd parties | | | | 0 |
| Total Contributions & Transfers | 0 | 0 | 0 | 0 |
| Program Support | 401,635 | 0 | 0 | 401,635 |
| Total Programme Support | 401,635 | 0 | 0 | 401,635 |
| Services & Recoveries | | | | 0 |
| Shared Services | | | | 0 |
| Total Services | 0 | 0 | 0 | 0 |
| TOTAL BUDGET | 7,311,823 | 0 | 0 | 7,311,823 |
| Available Resources | | | | |
| Multilateral Contributions | | | | 0 |
| ERUs contributions | | | | 0 |
| TOTAL AVAILABLE RESOURCES | 0 | 0 | 0 | 0 |
| NET EMERGENCY APPEAL NEEDS | 7,311,823 | 0 | 0 | 7,311,823 |



Kenya: Floods



 Affected districts