

DREF operation



International Federation
of Red Cross and Red Crescent Societies

Malawi: Measles Epidemic

DREF operation n° MDRMW006
GLIDE n° EP-2010-000117-MW1
29 June, 2010

The International Federation's Disaster Relief Emergency Fund (DREF) is a source of un-earmarked money created by the Federation in 1985 to ensure that immediate financial support is available for Red Cross and Red Crescent response to emergencies. The DREF is a vital part of the International Federation's disaster response system and increases the ability of national societies to respond to disasters.

CHF 125,701 has been released from the International Federation of The Red Cross and Red Crescent's (IFRC)'s Disaster Relief Emergency Fund (DREF) to support Malawi Red Cross Society (MRCS) to carry out a measles vaccination campaign targeting 80,000 beneficiaries.

Summary: Malawi has experienced its worst measles outbreak in 13 years, which has affected 23 out of 28 districts in the country. The southern region has been the most affected by the recent outbreak of measles, both in terms of the number of districts affected and the number of cases and deaths reported.

A total of 11,461 cases and 62 deaths have been reported as at 8 June, 2010. (Malawi, WHO). MRCS is targeting 80,000 people from eight districts, four in the central and four in the southern regions with social mobilisation and health promotion campaigns. To enable the National Society to effectively initiate the response operation focusing on social mobilisation, the IFRC has provided emergency funding to support the following activities:

- Training 800 volunteers on measles prevention and control using the Epidemic Control Manual as well as the Community-Based Health and First Aid (CBHFA) methodology.
- Production of materials for training and health education on transmission and prevention of measles.
- Dissemination of measles and health related prevention messages by MRCS volunteers among the affected districts.
- Supporting vaccination efforts of the Ministry of Health targeting children.

This operation is expected to be implemented over two months, and be completed by August 2010. A final report will be made available three months after the end of the operation (i.e. November, 2010).



Education session on measles to people in the community

[<click here for the DREF budget,](#)
[here for contact details,](#)
[or here to view the map of the affected area>](#)

The situation

Malawi recorded its worst measles outbreak in 13 years with the first measles case reported in December 2009. Since then, outbreaks have been detected in 24 of the country's 28 districts. Among the three administrative regions of the country, the southern region has been the worst affected in terms of reported number of affected districts, measles cases and related deaths. In the central region, all the nine districts have been affected whilst only two (Mzimba and Nkhatabay) out of nine districts in the northern region have reported confirmed cases.

Table 1: Trend in measles cases for the last 13 years

Malawi Measles Cases in the last 13 years				
1997	1998	1999	2000	2001
10,845	3,591	152	304	150
2002	2003	2004	2005	2006
92	167	1,116	184	1
2007	2008	2009	2010(June)	
143	20	21	11,461	

Source: Gideon Epidemiology www.gideononline.com

Whilst the epidemic is affecting almost all age groups, half of the cases reported are amongst children below the age of 15 years. The age-specific attack rate at 83 per 100,000 cases is highest among children under one year. The age specific attack rate for children aged 12-59 months and aged 5-14 years is 33 per 100,000 and 22 per 100,000 respectively. People aged 15 years and above have the lowest attack rate of 7 per 100,000 population. Based on a measles outbreak risk analysis conducted recently, 15 out of 28 districts are believed to have a large number of susceptible children.

As at 8 June 2010, 11,461 cases and 62 deaths had been reported from 24 districts in the country. Mortality rate was very high for infants at 38 per 100 cases. The outbreak has also affected the prison population in Blantyre, Zomba, Thyolo, Mwanza and Lilongwe.

The Government of Malawi, through the Ministry of Health (MoH), has plans to carry out a nationwide measles vaccination campaign in order to curb the spread of the disease. Vaccination campaigns have been planned for June and July 2010. The target is to vaccinate over six million children nationwide at an estimated cost of USD 4.1 million. With limited funding at its disposal, the Malawi Government is appealing for financial support to roll out the national vaccination campaign.

Other organisations such as MSF have responded to the appeal by supporting government efforts in carrying out social mobilisation campaigns in Blantyre, Chiradzulu and Mzimba districts, whilst there are plans to implement response activities including emergency immunization campaigns in Thyolo district.

MRCS has also responded by requesting for DREF assistance from the IFRC to support and complement government efforts in carrying out measles social mobilisation and health promotion campaigns targeting the eight districts of Mchinji, Lilongwe, Kasungu, Ntcheu, Lilongwe, Mulanje, Zomba and Balaka.

Coordination and partnerships

MRCS is an important strategic partner to the government and its auxiliary role to the government is well recognised. Through its networks in community-based health and care, water and sanitation, hygiene promotion and HIV and AIDS programmes, the MRCS participates in the MoH's coordination meetings. At the National Measles Outbreak Response task force meeting held at the MoH offices on 12 March 2010 and 28 May 2010, the MRCS' strategic role in health promotion was recognized. For this measles response operation, MRCS will partner with the MoH in carrying out social mobilisation activities in support the Government's measles campaign.

MSF has already started supporting Government efforts by conducting 'mop-up' vaccination campaigns in Blantyre and Mzimba Districts that have recorded 5,058 and 486 cases of measles respectively. The 'mop-up' campaign targeted children between the ages of six months and 14 years. The WHO and UNICEF have also pledged to support the Government with USD 100,000 and USD 186,000 respectively, whilst USAID pledged USD 10,000 towards the campaign. The MoH still has a huge funding gap for it to achieve its planned target.

Red Cross and Red Crescent action

MRCS is a national humanitarian organization, with a nationwide network of 28 divisions (districts) and sub-divisions and over 40,000 members. MRCS has experience in the following activities: community-based health care, maternal and child health; water and sanitation; HIV and AIDS community home-based care, support to orphans and vulnerable children; malaria and tuberculosis interventions; health in emergencies, disease outbreaks; food security; blood donor promotion and recruitment services; First Aid training and services; disaster preparedness and response; tracing service for refugees; dissemination of information on fundamental principles and humanitarian law; and refugee care and welfare.

The National Society carries out most of its activities through utilizing its trained community-based volunteers. The MRCS is able to capitalize on its community knowledge, trust, and established infrastructure to mobilize an extensive network of divisions and volunteers into social action, both for short-term and long-term disasters. The MRCS volunteers are members of the communities they serve as they are recruited from those very same communities.

Beneficiary selection

Measles has been known to mostly attack children between the ages of 9 months and 14 years. As such the planned vaccination campaign by the MoH will therefore target that age group. However, the social mobilisation activities will target the whole population in trying to create awareness about the disease and how it can be prevented at community level. MRCS intends to reach out to eight districts that have experienced the worst effects of the measles outbreak. Blantyre, Mzimba and Chiradzulu districts have not been included as MSF has already started social mobilisation and emergency vaccinations in those districts.

The proposed operation

Emergency Health

Objective: To improve measles and immunization awareness before and during the national campaign by targeting communities in eight districts with social mobilisation and health promotion campaigns – with a special focus on marginalised populations at risk of non-attendance (e.g. religious sects like the apostolic faith who are presumed carriers)

Expected Results:

- The number of cases of measles is significantly reduced.
- Target communities are effectively mobilised to prevent the spread of measles.

Activities planned:

Table 2: The planned activities

Activities planned	Target	Time frame
Participation in coordination meetings at national and district level	27 monthly meetings (three at national and three each in the eight targeted districts)	July , August, September
Sourcing and printing of IEC materials	8,000	July
Visibility (procurement of bibs, t-shirts, reflectors)	1,000	July
Provide logistical support to health workers and volunteers	80,000	July to September
Recruitment and training of volunteers and supervisors for social mobilisation	800	July
Dissemination of messages (number of days pre/during campaign)	-	July to September
Support vaccination site activities	-	July to September
Monitoring and supervision of activities at headquarters	Twice per month for three people	July to September
Monitoring and supervision at district level	Twice per week for three people	July to September

Target Beneficiaries:

The distribution of targeted beneficiaries is as follows; southern region 50,000 people, central region 20,000 people and northern region 10,000 people. MRCS is targeting to train 500 volunteers in the southern regions, 200 in the central region and 100 northern region.

Social Mobilisation Activities

Objective: To strengthen the capacity of the National Society to prepare for, mitigate and control the outbreak of epidemic diseases.

Expected Results:

- The capacity and quality of MRCS social mobilisation activities are improved.
- The capacity of RC staff and volunteers on epidemic control is improved.
- The capacity of MRCS to evaluate and prepare plans of action for future outbreaks is improved.

Activities planned:

- A three-day workshop for 26 participants from headquarters and branches affected by the measles outbreak.
- An evaluation of Red Cross activities carried out in response to the measles campaign.
- Development of measles campaign plan of action and contingency plans in the branches affected by the measles outbreak.

National Society visibility and relations

Objective: To improve relations with Ministry of Health and enhance visibility of the national society by contributing to human, material and financial resources through the DREF.

Expected Results:

- The partnership between MRCS and MoH is strengthened.
- Visibility of Red Cross as a player in humanitarian work is enhanced.

Activities planned:

- Participation in coordination meetings at national and district levels.
- Provide logistical support MoH vaccination activities.
- Production of reports on the measles campaign operation.

How we work

All International Federation assistance seeks to adhere to the [Code of Conduct for the International Red Cross and Red Crescent Movement and Non-Governmental Organizations \(NGO's\) in Disaster Relief](#) and is committed to the [Humanitarian Charter and Minimum Standards in Disaster Response \(Sphere\)](#) in delivering assistance to the most vulnerable.

The International Federation's activities are aligned with its Global Agenda, which sets out four broad goals to meet the Federation's mission to "improve the lives of vulnerable people by mobilizing the power of humanity".

Global Agenda Goals:

- Reduce the numbers of deaths, injuries and impact from disasters.
- Reduce the number of deaths, illnesses and impact from diseases and public health emergencies.
- Increase local community, civil society and Red Cross Red Crescent capacity to address the most urgent situations of vulnerability.
- Reduce intolerance, discrimination and social exclusion and promote respect for diversity and human dignity.

Contact information

For further information specifically related to this operation please contact:

- **In Malawi Red Cross Society:** Lawson Kasamale, Secretary General, Email mrcs@eomw.net; Phone: Tel 265.1.775.290; Fax: 265.1.775.590
- **In IFRC Southern Africa Region:** Ken Odur, Regional Representative, Johannesburg, Email: ken.odur@ifrc.org, Phone: +27.11.303.9700, Fax: + 27.11.884.3809; +27.11.884.0230

For coordination of the operation:

- **In IFRC Southern Africa Region:** John Fleming; Health and Care Coordinator, Johannesburg; Email john.fleming@ifrc.org; Phone: Tel: +27.11.303.9700; Mobile: +27.83.469.9831; Fax: +27.11.884.3809; +27.11.884.0230
- **In Geneva:** Christine South, Operations Coordinator for Southern Africa region; Phone: Tel +41.22.730.4529; fax: +41.22.730.0395; email: christine.south@ifrc.org

For performance and accountability enquiries:

- **In Africa Zone:** Theresa Takavarasha; Performance and Accountability Manager, Johannesburg; Email terrie.takavarasha@ifrc.org; Phone: Tel: +27.11.303.9700; Mobile: +27.83.413.3061; Fax: +27.11.884.3809; +27.11.884.0230

[<DREF budget and map below; click here to return to the title page>](#)

DREF APPEAL BUDGET SUMMARY

MDRMW006

ORIGINAL

RELIEF NEEDS

Shelter	0
Shelter - Transitional	0
Construction Materials	0
Clothing & Textiles	0
Food	0
Seeds & Plants	0
Water & Sanitation	0
Medical & First Aid	9,738
Teaching Materials	13,333
Utensils & Tools	0
Other Supplies & Services	0
Emergency Response Units (ERUs)	0

Total Relief Needs 23,071

CAPITAL EQUIPMENT

Land & Buildings	0
Vehicles Purchase	0
Computers & Telecom Equipment	0
Office/Household Furniture & Equip.	0
Medical Equipment	0
Other Machinery & Equipment	0

TRANSPORT, STORAGE & VEHICLES

Storage - Warehouse	500
Distribution & Monitoring	0
Transport & Vehicles Costs	3,760

PERSONNEL

International Staff	0
Regionally Deployed Staff	0
National Staff	0
National Society Staff	24,000
Consultants	0

WORKSHOPS & TRAINING

Workshops & Training	34,166
----------------------	--------

GENERAL EXPENSES

Travel	21,480
Information & Public Relations	0
Office running costs	4,686
Communication Costs	1,715
Professional Fees	2,000
Financial Charges	2,652
Other General Expenses	0
Depreciation	0

PROGRAMME SUPPORT

Programme Support - PSR	7,672
-------------------------	-------

SERVICES & RECOVERIES

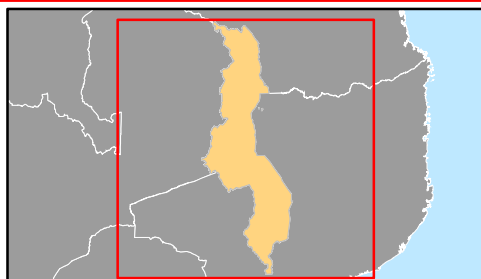
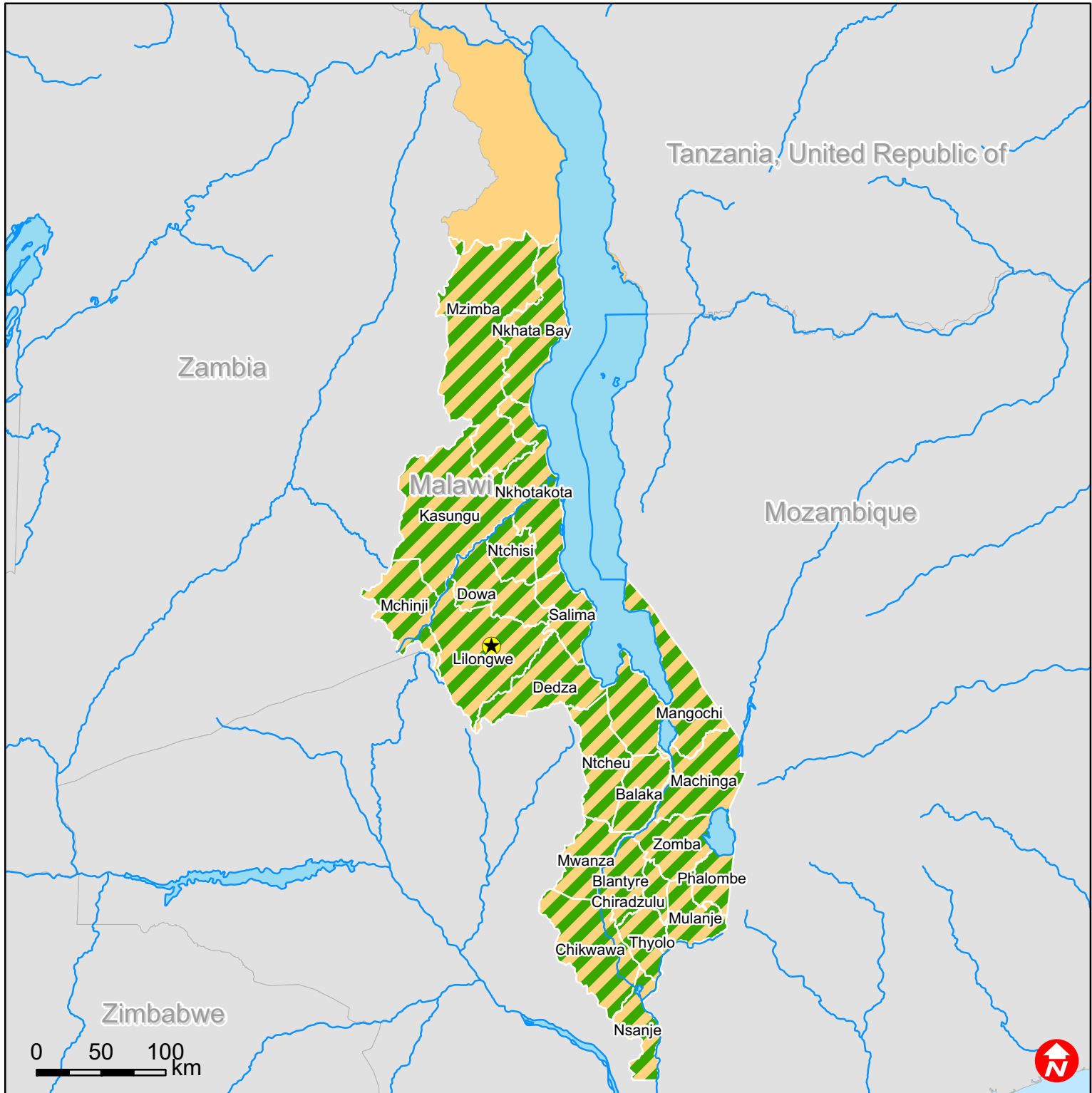
Services & Recoveries	
-----------------------	--

Total Operational Needs 102,630

TOTAL 125,701



Malawi: Epidemic (Measles)



 Affected districts