

# Operations update



International Federation  
of Red Cross and Red Crescent Societies

## Niger: Food Insecurity

Emergency appeal n° MDRNE005  
GLIDE n° OT201000028-NER  
12-month summary update  
30 April, 2011

**Period covered by this Ops Update:** March 2010 to March 2011.

This update represents a 12-month summary of the operation.

**Appeal target (current):** CHF 3,670,686 [<click here to view the attached Revised Emergency Appeal Budget>](#)

**Appeal coverage:** 54%; [<click here to go directly to the updated donor response report, or here to link to contact details >](#)

### Appeal history:

- This Emergency Appeal was initially launched on 18 March 2010 for CHF 986,862 for nine months to assist 300,000 beneficiaries.
- **Disaster Relief Emergency Fund (DREF):** CHF 229,046 was initially allocated from the Federation's DREF to support the National Society to respond.
- **Operations Update no. 1** covering the period from 18 March to 29 April 2010 focused on the cash for work programme.
- **Appeal budget revision and extension:** The appeal was revised to CHF 3.65 million and extended until March 2011 because of new updates from the government and partners (19 May, 2010) which raised the number of people affected by severe food insecurity affected population from 2.7 to 3.3 million.
- **Operations Update no. 2** (6 months) covering the period from 18 March 2010 to 31 September 2010 focused on the cash for work programme: food distribution, nutrition activities.
- **Operations Update no. 3** (10 months) covering the period from 18 March to 31 December 2010 again focused on the cash for work programme.
- **Operations Update no. 4** (12 months): The current update covers the 12-month period from March 2010 to 31 March 2011. It also requests extension of the operation until June 2011, in order to continue activities and meet commitments to beneficiaries and partners, and to measure outcomes achieved by the operation.



Food Distribution for Malnourished Children in Dosso/Photo RCSN

### Summary:

Since the beginning of 2010, the population of Niger has suffered from food shortage and resulting nutritional crisis, especially among children under 5 years old. The crisis is largely the result of failed rains. The rains arrived too late and ended too early. According to an assessment of the government released on 19 May 2010, nearly half of the population of Niger (7.1 million people) were affected. About 3.3 million have been classified as severely food insecure; unable to meet their minimum daily dietary requirements. The Red Cross Society of Niger (RCSN) with support from the International Federation of Red Cross and Red Crescent Societies (IFRC) has implemented activities in accordance with the disaster response plan of action in three of the eight regions in

Niger. These activities are related to the recuperation of eroded lands through the Cash for Work programme, the reinforcement of farming activities through the free distribution of improved seeds for the households, coordination of nutrition activities, and food distribution in partnership with WFP.

The initial strategy of RCSN was to focus on carrying out cash for work activities; to distribute food and seeds/plants in collaboration with partners to start the June/July farming seasons in the best possible conditions, and to contribute to supporting health centres to provide appropriate nutritional services to the affected communities. However, the revised appeal took into consideration the results of the latest assessments showing severe food insecurity, acute malnutrition of children and a precarious food situation in some urban centres (Niamey), accompanied by skyrocketing food prices in markets. The National Society, IFRC and other Participating National Societies (PNS) therefore increased their existing cash programme activities in Zinder, Diffa and Tahoua, and extended them to Dosso and Niamey suburbs (the choice was made in consultation with partners because not many humanitarian organizations have been covering these regions).

## The situation

The population in Niger has suffered from a serious food shortage since the beginning of 2010 because of the latest poor rainy season in Niger. Indeed, rains were irregular: they arrived late and stopped earlier than normal. This thinned harvests and led to a 31 percent decrease in crop production compared to the previous year (410,000 tonnes less), according to the Niger government. The most affected regions in Niger were Diffa (328,781 people), Zinder (1,707,695) and Tahoua (1,983,452). The same regions suffered from the food security crisis in 2005.

Food insecurity has drastic consequences especially on children's health and education. Malnourished children are prone to infections and diarrhoeal diseases, which in turn affect their school attendance. The effects of acute food insecurity can undermine years of progress on the Millennium Development Goals. Food shortages, if lasting, will also increase adults' vulnerability to various epidemics.

On 18 March 2010, the IFRC launched an emergency appeal for CHF 986,862 to support the Red Cross Society of Niger in its assistance to 300,000 people in 120 villages over 9 months. Due to other reports of the government and the United Nations agencies, which raised the severe food insecurity affected population from 2.7 to 3.3 million the appeal was revised to CHF 3.65 million and extended until March 2011.

Despite late availability of funds and commitments towards partners in the field, the following activities have been carried out: recovery activities, creation of cereal banks, distribution of improved seeds and follow up of farmers, the signature of an MoU with FAO and the Ministry of Agriculture, and the finalization of nutrition activities. This update is seeking a three-month extension until end of June. This would allow analysing programme outcomes and impacts prior to the production of a final report.

## Coordination and partnerships

To coordinate the intervention of the Movement partners, the Sahel Regional Office and the field delegate/Country Representative based in Niamey supported RCSN to hold meetings on the food insecurity situation, to analyse interventions made so far and plans to regularly update the declared intentions of all partners. Coordination has also been made at regional level. The National Society has been supported through the Federation by the British, Danish, Swedish, Japanese, New Zealand, Chinese (Hong Kong), Norwegian Red Cross Societies, and bilaterally by French, Irish, Monaco, Spanish Red Cross Societies, Qatar Red Crescent, the IFRC and ICRC as well as other Partner National Societies, OPEC and USAID. An agreement on nutrition has been signed on 16 July 2010 between RCSN and UNICEF. To facilitate the early community screening of children under five years, UNICEF has agreed to provide for RCSN 425 Mid Upper Arm Circumferences (MUAC) measures, 30 stadiometers and 30 Salter Scales. This agreement allows UNICEF to follow up the National Society's nutrition activities and advise accordingly.

In November, a memorandum of understanding was signed between NRC and WFP to distribute ready to use therapeutic food and food parcel in Integrated Health Centres (CSI).

A status agreement between RCSN/IFRC and the Government of Niger has also been signed. This provides the Federation with a legal status in Niger and leads to an increase in programme activities and coordination of all Movement partners in Niger.

From 11 to 13 July, 2010 the Secretary General of the IFRC, the Director of Africa Zone and the Regional Representative for Sahel office paid an official visit to Niger. They met many officials and Red Cross Red Crescent Movement partners and witnessed the impact of the food and nutrition crisis that has affected nearly half of Niger's population. The Secretary General took the opportunity of his visit to sign a status agreement between the IFRC and the Government of Niger. This provided the Federation with a legal status in Niger and lead to an increase in programme activities and coordination, with all Movement partners in Niger. The Secretary General also took advantage of his stay to advocate in favour of more support to the Niger population from the international community.

A country representative for Niger was appointed on September 2010, to better support the RCSN and coordinate the Movement's response to the food security crisis.

#### **National Society Capacity Building:**

The continual support of PNS and the Federation since 2005 has improved available technical competences. As a result, compared to 2005, the RCSN has better equipped branches, increased number of trained volunteers and technical staff at headquarters.

## Red Cross and Red Crescent action

### **Overview**

To cope with the growing severe food insecurity and provide more comprehensive assistance to an increased number of beneficiaries, the IFRC trebled its emergency appeal to 3.67 million Swiss francs. IFRC support has enabled the RCSN to rapidly scale-up its immediate activities focusing on four major areas to increase the resilience of the most vulnerable populations. Within the framework of the revised appeal of the Red Cross Society of Niger, a strategy for the implementation of the cash distribution has been elaborated in order to undertake all the related activities with equity and transparency for the benefit of targeted beneficiaries.

Additionally the RCSN has recruited qualified local staff to increase response capacity and has received three vehicles from the Dakar stock to support operations. Sahel Regional Representation staff and a country-based delegate/country Representative within the NRCS worked closely with the National Society to manage the emergency operation.

### **Progress towards outcomes**

#### **Cash for work**

**Outcome: Support cash programming, food and seed distribution in Diffa, Zinder, Tahoua Niamey areas, resulting in increased community resilience and improved agriculture production**

<b>Outputs (expected results)</b>	<b>Activities planned</b>
Livelihoods of 1,500 persons per region in 61 villages (Zinder, Tahoua and Diffa) improved through the cash programme.	<ul style="list-style-type: none"> <li>Scale-up the current operation in 61 villages on cash programming;</li> <li>Work with the communities in 61 villages on anti-erosion and water harvesting measures according to the communal development plan to improve agricultural production;</li> <li>Equip the above villages with soil working tools and the most appropriate species to plant (e.g. herbaceous, gum tree)</li> <li>Improve the skills of 75 volunteers, foremen and supervisors;</li> <li>Purchase office and other equipment (see budget) for Diffa branch to offer timely and good quality response to food insecurity;</li> <li>Increase the capacity of the RCSN and the Sahel Regional Office in narrative and financial reporting;</li> <li>Conduct ongoing, mid-term and end of project review of outcomes and impacts for beneficiaries.</li> </ul>
The cash programme is extended to Dosso and Niamey suburbs (1,500 households in 90 days in each).	<ul style="list-style-type: none"> <li>Identify and develop baselines in villages for cash programme (cash for work, cash transfer, cash training, and vouchers) in Dosso and Niamey suburbs;</li> <li>Strengthen logistic, financial and managerial capacities of branches and the RCSN headquarters to implement cash programming and other activities;</li> <li>Identify and deploy four international and regional staff to support the cash programming;</li> </ul>

	<ul style="list-style-type: none"> <li>• Conduct ongoing, mid-term and end of project review of outcomes and impacts for beneficiaries.</li> </ul>
In addition to the initial 61 villages, the most vulnerable families in 917 target villages have received general food distribution during the cropping season.	<ul style="list-style-type: none"> <li>• Identify and develop baselines on the most vulnerable households in 978 (917+61) target villages;</li> <li>• Increase the capacity of 60 volunteers on distribution techniques;</li> <li>• Distribute food to 1,758 households in 61 target villages in May;</li> <li>• Distribute food to 14,306 households (second round);</li> <li>• Monitor, evaluate and provide regular reports on the number of beneficiaries receiving food support.</li> </ul>

### Progress:

Within the framework of the revised appeal, a strategy for the implementation of the Cash Programme has been elaborated to undertake all the related activities in equity and transparency for the benefit of targeted beneficiaries. The first component of this strategy has been the identification of the beneficiaries. In this regard, some committees have been set up for the selection of the vulnerable households. On the basis of a set of criteria (households headed by women, families with more than 10 people, families with a pregnant woman and those that are not supported by any other programme), the committees have selected a total of 965 household beneficiaries in three main communities (Afala, Bambéye, Kalfou).

**Seeds and forest seeding distribution:** 65.46 tons of local improved seeds (43.64 tons of millet and 21.82 tons of cowpeas - *niébé*) have been distributed to 4,364 households, i.e. 30,558 people in 119 villages in the regions of Diffa, Tahoua and Zinder. Some 73,900 forest seedlings were produced for the reforestation of recovered eroded sites. Altogether, 65,920 forest seedlings were planted in Diffa, Tahoua and Zinder. Some 8,000 others were donated to the government as the contribution of the Red Cross Society of Niger during the celebration of the national tree day in Tahoua. Another 2,600 bags of *herbaceous* were sown on the recovered eroded sites in the three regions.

**Table 1:** Seeds, forest plants and tools distributed

Region	Seeds	Plants	Tools					
	Herbaceous/Bag	Forest plants	picks	shovels	crowbar	gloves	string/m	ribbon/m
Tahoua	1,400	24,000	228	288	15	288	100	50
Zinder	800	1,920	392	392		392	600	150
Diffa	400	40,000	48	48		48	50	50
<b>Total</b>	<b>2,600</b>	<b>65,920</b>	<b>668</b>	<b>728</b>	<b>15</b>	<b>728</b>	<b>750</b>	<b>250</b>

Food distribution, the team of the RCSN distributed food provided by the World Food Programme in 61 villages in Zinder. The first round of distribution, conducted in May, benefitted 1,786 households (12,309 persons). The second round of distribution was carried out in July in Zinder, supported by the Irish Red Cross. It was extended to 82 villages for 2,657 households (18,598 persons); 293 tonnes of food received from WFP were distributed.

At the same time in Mirriah department, 835 targeted villages, with 14,306 households (100,142 persons) received 1,574 tonnes of food. In September, 293 tonnes of food were distributed to 380 households (2,663 persons) in Tanout department.

**Table 2:** Improved seed distribution

Region	Villages	Households	Total Beneficiaries	Seeds cowpeas (Niébé) in KG	Seeds Millet en Kg	Total Kg
Zinder	44	1,492	11,047	7,460	14,920	22,380
Tahoua	55	2,160	15,120	10,800	21,600	32,400
Diffa	20	712	4,984	3,560	7120	10,680
<b>Total</b>				119	4,364	31,151

### Cash for work programme

The project enabled 3,887 people to get cash by working in anti-erosion sites. Although the activities were implemented in 61 targeted villages, 11 additional villages provided labor. In total, 72 villages have benefited from the cash-for-work programme, i.e. 3,887 households or 27,209 persons.

**Table 3: Cash for work (RCSN)**

Region	Number of beneficiary villages	Number of beneficiary households	Total indirect beneficiaries	Recovered Lands (ha)
Tahoua	11	115	805	58,8
Zinder	37	3,552	24,864	74
Diffa	24	220	1540	110
	72	3,887	27,209	242.8

### Cash transfer programming

1,965 especially vulnerable families received cash transfers, including a round of CFA 50,000 to 1,000 households experiencing deficits during harvest time. Another round was distributed to 965 families in Zinder, Diffa and Tahoua, mainly for people unfit to work.

**Table 4: Free Cash transfer (RCSN)**

	Commune	Number of villages	Beneficiaries Households
<b>Tahoua Region (Harvest time)</b>	Afala	3	134
	Kalfou	8	419
	Bambéye	10	447
<b>Zinder; Diffa, Tahoua/emergency</b>		72	965
	Total	93	1,965

**Challenges:** The selection of targeted beneficiaries has been conducted with equity and transparency. However, in some villages communities did not agree with the criteria of selection. They were reluctant to cooperate with the committees in charge of the selection of beneficiaries.

### Improve health of children under 5

**Outcome: To improve nutritional and health status of children under 5 in Zinder, Dosso and Niamey Suburbs.**

Outputs	Activities planned
The prevalence of global acute malnutrition among children under five years old is decreased.	<ul style="list-style-type: none"> <li>Conduct assessments on targeted villages and referral centres (related needs);</li> <li>Train 700 volunteers and 50 supervisors on anthropometric measurement, bilateral oedema detection and interpretation of nutritional index;</li> <li>Monthly screening of children under five years old;</li> <li>Refer moderate malnourished children to CRENAM<sup>1</sup></li> <li>Provide support to CRENAM according to needs;</li> <li>Refer severe acute malnourished children without /with complication to CRENAS/CRENI;</li> <li>Organize weekly distribution of Ready to Use Therapeutic Food for Severe Acute Malnourished without complication, if CRENAS is not accessible;</li> <li>Provide transport for referral of severe acute malnourished children to CRENI if there are difficulties with the access;</li> <li>Distribution of cash grant for 600 discharged children from CRENAS/CRENI;</li> </ul>

<sup>1</sup> Intensive Nutritional Rehabilitation Centres (CRENI), Rehabilitation Centres for Severe Malnutrition (CRENAS), Rehabilitation Centres for Moderate Malnutrition (CRENAM)

	<ul style="list-style-type: none"> <li>• Support the rehabilitation of ten CSI;</li> <li>• Install internet and telephone in the office and installation of data connectivity facilities and provision of IT support;</li> <li>• Training of radio operator and drivers to facilitate the management of the project.</li> </ul>
<p>Infant and young child feeding practices are improved through nutrition and health education sessions.</p>	<ul style="list-style-type: none"> <li>• Identification of peer educators;</li> <li>• Organization of workshop for peer educators;</li> <li>• Train 80 volunteers on communication toolkit including beneficiary communication, news releases, information bulletin, fact-sheets, video footage and photos with extended captions;</li> <li>• Conduct weekly cooking demonstrations;</li> <li>• Train 80 volunteers on infant and young child feeding practices;</li> <li>• Provide weekly nutrition education focused on hygiene promotion and balanced diet (peer to peer education);</li> <li>• Rehabilitation of Dosso branch office for the management of the operation;</li> <li>• Conduct review of project outcomes and impact on nutritional and health status of infants and children, as well as the household as a whole;</li> <li>• Train the targeted groups on oral rehydration salt (ORS) use and hygiene promotion;</li> <li>• Raise awareness activities on health promotion;</li> <li>• Organise cleaning up campaign at community level.</li> </ul>

### Progress:

The rate of total acute malnutrition in Niger exceeded the emergency threshold and reached a level of 16.7%. The severe acute malnutrition rate rose from 2.1% in 2009 to 3.2% in 2010. The National Society as well as the IFRC played a major role in the reinforcement of the capacity of volunteers in the regions of Dosso and Niamey. The volunteers were trained in early screening, referral and support to health centres and sensitizing households. The Community-based activities have been conducted in Zinder, Dosso and Niamey suburbs to support the identification of malnourished children, referral and support to health centres in 234 villages. In June, a total of 114,222 malnourished children were referred to health centres while health and nutrition education sessions were conducted in 200 villages. The early screening activity started in the CSI of Goudel, which is 12 km away from Niamey.

### Recruiting nutritionists

Three nutrition focal points for the districts of Niamey, Loga and Doutchi have been recruited since September. Two consultant nutritionists were also recruited to support the National Society implementing the planned nutrition activities in Niamey and Dosso. In September and October, nutrition activities were mainly achieved in 40 health centres in districts located in Niamey, Doutchi and Loga outskirts. From November, they were extended to 45 health centres in the department of Dosso.

### Training volunteers

At this level, 950 community volunteers and 95 supervisors or team leaders were recruited and trained (by the nutritionist and the heads of health centres) in the districts of Niamey and Dosso region). Volunteers are trained on malnutrition, community screening, the observance of anthropometrical measures, and the use of MUAC (material for screening community malnutrition). Volunteers have also acquired communication knowledge to carry out sensitization sessions on various themes like the promotion of mother and child health, hygiene and the importance of the utilization of local diversified food.

### Active community screening and referral of malnourished to CREMAM/CRENAS/CRENI

A total of **123'126** children aged 6-59 months have been screened of which **19'098** malnourished children were referred to the health centres of the two regions where the Red Cross Society of Niger is intervening. Some **14'592** children are moderate malnourished, while **4'505** are severe malnourished with complications. As for pregnant and breastfeeding women, 2,657 have been screened of which 336 had a PB less than 230 mm. They have also been referred to the district of Dosso department.

### Sensitization sessions on health promotion

Some 730 sensitization sessions on various themes linked to health and nutrition were organized by volunteers from 40 health districts in Loga (192), Doutchi (153) and Niamey (385 in the 3 districts). About 42 sessions of culinary demonstration on local food were organized in the health district of Doutchi. Three days of the week are

**Table 5:** Summary of the active screening of malnutrition (September-December 2010)

Region	District	6-59 months children screened	Malnourished children referred	Number of moderate malnourished	Number of severe malnourished
Niamey	Total	45'624	4'616	3'250	1'365
	District I	10'770	2'018	1'293	725
	District II	19'224	1'428	1'117	311
	District III	15'630	1'170	840	329
Dosso	Total	77'502	14'482	11'342	3'140
	Doutchi	20'383	3'380	2'713	667
	Dosso	33'589	7'228	5'767	1'461
	Loga	23'530	3'874	2'862	1'012
Total		123'126	19'098	14'592	4'505

reserved to door-to-door or group active screening, and two days reserved to the organization of sensitization sessions on various themes like the importance of exclusive breastfeeding up to six months and vaccinations, family planning, environment hygiene, fight against child diseases, etc.

Volunteers of the 45 health centres of the district of Dosso Department have sensitized parents of screened children. All moderate and severe malnourished children are referred to CREN where in addition to the food ration they have received from WFP; their parents are sensitized on good practices concerning nutrition and prevention of child diseases.

### Construction and rehabilitation of recovery centres

Needs assessment of CREN (*Centre de récupération nutritionnelle*) revealed that the construction of shelter for parents is a priority. Indeed, parents are very often waiting for therapeutic food from WFP for their malnourished children under the sun. A total of 10 sheds were constructed: 4 in Niamey, 3 in Loga and 3 Doutchi.

### Support free care for 0-5 year children

The active screening that community Red Cross volunteers are carrying leads to an important use of health centres whose capacities proved to be very limited, the constant lack of drugs in health centres has caused many recurrences. As a result, RCSN/IFRC have procured first-aid drugs and made them available to the CSI of Loga, Doutchi and Niamey where the project is being implemented.

### Cash discharge ration for malnourished children from most vulnerable families

About 350 mothers selected amongst women released from CRENI with malnourished children received each a cash discharge ration. Identification activities are still ongoing with Red Cross focal points (to meet the initial 600 households that were planned), heads of recovery centres and the representative of COGES from CSI for transparency/equity of this activity. Distribution is done upon presentation of the health record of the malnourished child. The beneficiaries are, within the intervention area of the RC, households that were not taken into account in "Blanket feeding" or other cash or food support programme.

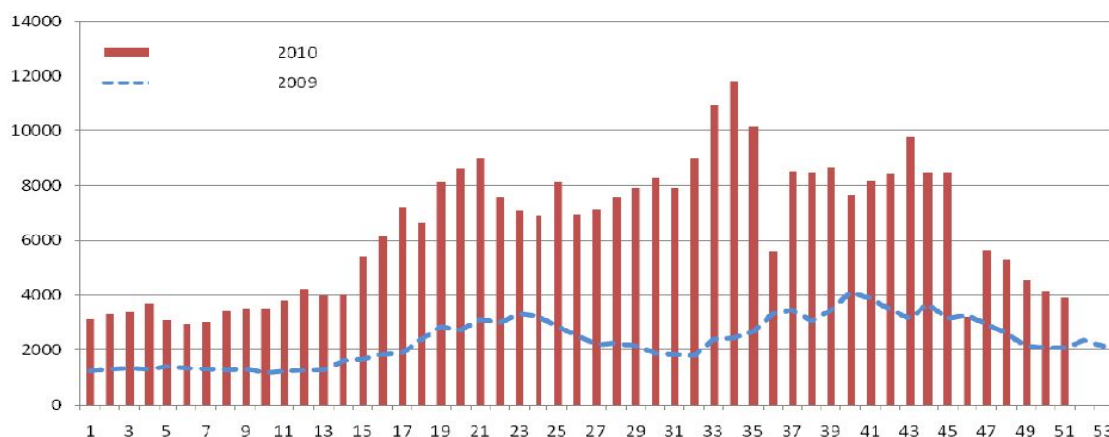
### Lessons Learned:

- Involvement of local and regional authorities;
- Willingness of populations to collaborate with the RC;
- Strong involvement of officials of CSIs that facilitated the work of volunteers.

### Challenges:

- Difficulty to find good nutritionists for short-term contract as focal points of the Regions;
- Late and inadequate response of donors: activities that were supposed to begin in July started timidly in September when there was a decline in the food crisis;
- Shortage of dry ration (CSB, oil, sugar) in some health centres for the treatment of moderate malnourished; this situation discouraged some mothers to go to the CSI;
- Non-permanent presence of district's officials and nutrition's leaders in their CSI.

**Figure 1:** 2009-2010 increase in weekly referrals of children with severe acute malnutrition (SAM) referred to CRENAS and CRENI in Niger 2010 (source: UNICEF/Niger)



### Recommendations:

- To continue activities until end of June 2011 to better meet commitments vis-à-vis vulnerable and partners, and to better measure outcomes and impacts of Red Cross actions;
- At least scaling up the nutritional activities until December 2011 and extend to 80 integrated health centres;
- To ensure sustainability by integrating mass de-worming campaigns, iodization of food, and distribution of vitamin A by community volunteers who can join all areas not reached by leaders of CSI.

### Long-term food security/Risk reduction

**Outcome: To ensure medium and long term access, availability and utilisation of food by the target populations.**

Outputs	Activities planned
120 villages have received cereal donations to Grain banks (in Partnership with WFP) to have cereals to sell at village level and to fill their account (10 tons for the new ones and 5 tons for existing banks).	<ul style="list-style-type: none"> <li>• Identify and select the villages with grain banks that need to be reinforced in the zone of intervention;</li> <li>• Elaborate and finalize the agreement with WFP to provide cereals;</li> <li>• Organize training/refreshing sessions for the management committee of the grain banks;</li> <li>• Assist in the creation of grain banks in the zones of intervention;</li> <li>• Carry out monitoring and evaluation activities of the cereal management by the grain bank;</li> <li>• Document the process and use for learning to improve future interventions.</li> </ul>
The most vulnerable 40 households in the 120 villages (4,800 households) have received improved seeds (20 kg) for the forthcoming seasons.	<ul style="list-style-type: none"> <li>• Develop a suppliers list on approved "improved" seed producers;</li> <li>• Identification of the 40 most vulnerable households in the 120 villages;</li> <li>• Provision of improved seeds to 4,800 households in collaboration with</li> </ul>

	<p>the World Food Programme;</p> <ul style="list-style-type: none"> <li>• Monitoring and evaluation of distribution activities.</li> </ul>
Replanted maize (in coordination with FAO) is promoted in urban areas.	<ul style="list-style-type: none"> <li>• Identification of short cycle maize;</li> <li>• Identification of households with cropping potential in towns;</li> <li>• Training volunteers on replanted maize;</li> <li>• Extension of replanted maize;</li> <li>• Test plots of replanted maize;</li> <li>• Monitoring and evaluation of replanted maize activities.</li> </ul>
Out of the 120 villages, 10 are identified for long-term interventions.	<ul style="list-style-type: none"> <li>• Support the RCSN complete the food security vulnerability analysis and to use the analysis to develop plan of action for future food insecurity situations and emergencies;</li> <li>• Assist the most vulnerable villages with the highest potential in agricultural production increase through long term food security intervention;</li> <li>• Reinforce the National Society's capacity (at community, branch and national levels) in food security assessment, planning and project implementation.</li> </ul>

### Progress:

The recuperation of eroded lands through the Cash for Work project was carried out and about 132.8 ha of lands have been recovered in Tahoua and Zinder regions by 4,667 households. The recuperation of the eroded lands has two main objectives; providing financial means to the households so that they can have access to foodstuffs, and recovery of the eroded lands. As for the distribution of improved seeds, a total of 2,692 households in 98 villages have received 40,380 tons of improved seeds in Tahoua and Zinder regions. Additionally the second round of the targeted general distribution was launched in Mirriah by the Administrative head. Following the rains recorded in early July, the farming situation improved. This situation has led to an improvement of the seedling coverage in some farming areas. On July, the seedling coverage was 94% against 85% in the year 2009 at the same period and the lifting of millet crops was visible.

According to the food security manager of the Niger Red Cross, ongoing recovery activities should be completed by the end of June. A cash pledge was confirmed by September 2011. By that time, all humanitarian actors in the country were focused on the closure of the agricultural campaign 2010 (harvest). Assessment missions conducted by the authorities and UN Agencies were carried out in January and February to identify deficit and vulnerable areas requiring intervention or support. The National Society used among other the recommendations of these assessments to develop his recovery plan of action.

### Summary of the ongoing Recovery activities:

- 4,800 households in 120 villages are targeted in Tahoua Region;
- Construction of 10 Graham Banks and providing with 10 tons of cereal. The villages have been selected and the store are being constructed;
- Negotiations with WFP to properly provide the banks with cereal will be carried out very soon;
- Distribution of improved seed to 40 households in 120 villages: 3,200 vulnerable households and 5 women associations were identified in 80 villages and are being trained;
- In cooperation with FAO, a list of suppliers of improved seed was elaborated and improved seeds have been selected and ordered. The seeds should be stored in a National Society warehouse and distributed with the onset of rains and the beginning of the 2011-2012 agricultural campaign;
- Organisation of EVC: the ToR were finalized and participants selected for training for the strengthening of the National Society's capacity in monitoring and evaluation, project planning & elaboration;
- Long-term intervention: 10 villages are identified (the selected villages will be part of those targeted by EVC) long-term integrated programme and intervention will be developed and included in the Strategic plan and in the 2011 Plan.

### Challenges:

- Insufficiency of funding although there are opportunities on the field;
- Replanted maize is promoted in urban areas. This activity will not be implemented because it does not correspond to the eating habits of the target population. It will be then included in the long term programme;

- HR support is needed for one month, to work on the National Society strategic plan, and elaborate 2011 plan of action and some marketing tools for local fundraising,
- Bring the National Society to undertake an internal audit;
- Launch the CAS process after completed all required conditions.
- Bring all PNS to focus their programme and intervention on National Society strategic plan developed according to Strategy 2020.

### **Strengthening the Capacity of the RCSN**

An assessment on “food insecurity in Niger and the impact of Red Cross Red Crescent Movement’s response to the 2010 crisis” was conducted in September by the IFRC Sahel Regional Representation, the IFRC Africa zone office and IFRC Geneva. The report is available and can be shared upon request. The RCSN has amended and approved the report and the conclusions and recommendations were taken into account while drafting its strategic plan (2011-2015).

The main recommendations of the assessment mission for the Niger Red Cross to be able to improve its approach and financing were as follows:

### **Recommendations for Niger Red Cross**

- Applying the principle of separation between governance and management at both headquarters and branch level, internal (SNP) and external partners would have more confidence and would be quicker to work with it;
- Institutionalizing an annual internal audit system, which will also make it possible for RCSN to have more credibility vis-à-vis its partners;
- Providing job description for each member of the various bodies at both headquarters and local level, and defining possible interactions;
- Promoting team spirit and common activity programming;
- Designing and implementing a functional literacy programme as a priority for branch level leadership members who are illiterate;
- Capitalizing on the participating National Societies’ relations to develop partnerships with United Nations agencies, NGOs, and other technical and financial partners;
- Defining intra and inter-structures’ communication mechanisms and channels (headquarters and regional committees) to ensure a better information sharing;
- Conducting awareness raising and information campaigns on the principles of voluntary action principles, targeting, among others, students;
- Defining a volunteer recruitment and retaining strategy;
- Making it mandatory to use a distinctive sign on the ground: patch or t-shirt for more visibility;
- Capacity building in the area of disaster risk reduction and adaptation to climate change to better prepare communities.

### **Recommendations for participating national societies**

- Supporting Niger Red Cross in programming and implementing the above mentioned activities;
- Investing themselves in training RCSN members on management, and resource mobilization;
- Accepting, for any recruitment of project coordinator, to have a RCSN counterpart for a better capitalization and sustainability of actions in the field.

### **Recommendations for IFRC**

- Supporting Niger Red Cross in programming and implementing the above mentioned activities;
- Playing a crucial role in planning and coordinating the activities of the Red Cross/Red Crescent Movement for more overall consistency, and endeavouring to make response actions in line with Government plans;
- Assuming the role of facilitator for the improvement of RCSN and SNP relations;
- Visiting, on a regular basis, the field to monitor and evaluate activities, CRN needs assessment and capacity building;
- Supporting the RCSN Disaster and pandemic Response by highlighting its added value based on lesson learned gained from the management of the past disaster;
- Support the National Society reducing the risks and consequences of drought, floods, wildfires, and epidemics;
- Reducing the vulnerability and risks due to climate change;
- Supporting the National Society in long-term development of its branches;

- Strengthening the capacity of the National Society in the dissemination of the Movement's Principles and Values, non-violence, humanitarian diplomacy, and implementing post-crisis recovery activities and programmes.

#### Overall lessons learned:

- An integrated approach would have more impact on beneficiary communities;
- The capacity building of the National Society branches in terms of technical services, infrastructure and cooperation skills will be the key to the success of Red Cross action;
- Community-based approaches should be strengthened by involving beneficiaries throughout the project cycle from planning to evaluation.

#### Way forward

The way forward is charted by the aforementioned recent analysis, including the recently-validated 2011-2015 strategic plan and the recommendations of the assessment of food security and of the Movement's response. Additionally, a vulnerability and capacity assessment (VCA) is being carried out. Based on this analysis, a workshop with the National Society is being organized in order to draft a cooperation strategy on how to support the Niger RC optimally.

## How we work

All IFRC assistance seeks to adhere to the [Code of Conduct for the International Red Cross and Red Crescent Movement and Non-Governmental Organizations \(NGO's\) in Disaster Relief](#) and the [Humanitarian Charter and Minimum Standards in Disaster Response \(Sphere\)](#) in delivering assistance to the most vulnerable.

The IFRC's vision is to inspire, encourage, facilitate and promote at all times all forms of humanitarian activities by National Societies, with a view to preventing and alleviating human suffering, and thereby contributing to the maintenance and promotion of human dignity and peace in the world.

The IFRC's work is guided by [Strategy 2020](#) which puts forward three strategic aims:

1. Save lives, protect livelihoods, and strengthen recovery from disaster and crises.
2. Enable healthy and safe living.
3. Promote social inclusion and a culture of non-violence and peace.

## Contact information

**For further information specifically related to this operation please contact::**

- In **Niamey**: Aly Bandiaré, President, Red Cross Society of Niger, Niamey; phone: +227 73 30 37, Fax: +227 73 24 61; email: [crniger@intnet.ne](mailto:crniger@intnet.ne);
- In Niamey. Pierre Kana; Country Representative Niger, phone: +227 207383 34; fax: +227 2073 83 34; email: [pierre.kana@ifrc.org](mailto:pierre.kana@ifrc.org);
- In **Dakar**: Momodou Lamin Fye, Regional representative for Sahel, phone: +221 33 869 3641; fax: +221 33 820 25 34; email: [momodoulamin.fye@ifrc.org](mailto:momodoulamin.fye@ifrc.org);
- In **Johannesburg**: Dr Asha Mohammed, Head of Operations, email: [asha.mohammed@ifrc.org](mailto:asha.mohammed@ifrc.org), phone: +27.113.03.97.00, fax: + 27.11.884.38.09; +27.11.884.02.30
- In **Geneva**: Christine South, Quality assurance senior officer, phone: +41.22.730.45.29, email: [christine.south@ifrc.org](mailto:christine.south@ifrc.org)

[<Financial statement attached below; click here to return to the title page>](#)

Selected Parameters	
Reporting Timeframe	2010/3-2011/3
Budget Timeframe	2010/2-2011/3
Appeal	MDRNE005
Budget	APPEAL

All figures are in Swiss Francs (CHF)

## I. Consolidated Funding

	Disaster Management	Health and Social Services	National Society Development	Principles and Values	Coordination	TOTAL
<b>A. Budget</b>	<b>3,670,686</b>					<b>3,670,686</b>
<b>B. Opening Balance</b>	<b>229,000</b>					<b>229,000</b>
<b>Income</b>						
<b>Cash contributions</b>						
<i>British Red Cross</i>	183,396					183,396
<i>China Red Cross, Hong Kong branch</i>	43,871					43,871
<i>Danish Red Cross (from Danish Government)</i>	136,927					136,927
<i>IFRC at the UN Inc (from Kraft Foods Foundation)</i>	23,790					23,790
<i>Ireland - Private Donors</i>	1,084					1,084
<i>Japanese Red Cross</i>	121,100					121,100
<i>Monaco Red Cross</i>	16,353					16,353
<i>New Zealand Red Cross</i>	20,000					20,000
<i>Norwegian Red Cross</i>	83,279					83,279
<i>On Line donations</i>	469					469
<i>OPEC Fund For International Development</i>	200,803					200,803
<i>Swedish Red Cross</i>	116,277					116,277
<i>Swedish Red Cross (from Swedish Government)</i>	509,311					509,311
<i>United Arab Emirates Red Crescent</i>	10,511					10,511
<i>United States Government - USAID</i>	499,255					499,255
<b>C1. Cash contributions</b>	<b>1,966,426</b>					<b>1,966,426</b>
<b>Other Income</b>						
<i>DREF Allocations</i>	-229,000					-229,000
<b>C4. Other Income</b>	<b>-229,000</b>					<b>-229,000</b>
<b>C. Total Income = SUM(C1..C4)</b>	<b>1,737,426</b>					<b>1,737,426</b>
<b>D. Total Funding = B + C</b>	<b>1,966,426</b>					<b>1,966,426</b>
<b>Appeal Coverage</b>	<b>54%</b>					<b>54%</b>

## II. Movement of Funds

	Disaster Management	Health and Social Services	National Society Development	Principles and Values	Coordination	TOTAL
<b>B. Opening Balance</b>	229,000					<b>229,000</b>
<b>C. Income</b>	1,737,426					<b>1,737,426</b>
<b>E. Expenditure</b>	-1,513,762					<b>-1,513,762</b>
<b>F. Closing Balance = (B + C + E)</b>	<b>452,664</b>					<b>452,664</b>

International Federation of Red Cross and Red Crescent Societies  
MDRNE005 - Niger - Food Insecurity

Appeal Launch Date: 18 mar 10

Appeal Timeframe: 22 feb 10 to 31 mar 11

Interim Report

Selected Parameters	
Reporting Timeframe	2010/3-2011/3
Budget Timeframe	2010/2-2011/3
Appeal	MDRNE005
Budget	APPEAL

All figures are in Swiss Francs (CHF)

### III. Consolidated Expenditure vs. Budget

Account Groups	Budget	Expenditure					TOTAL	Variance
		Disaster Management	Health and Social Services	National Society Development	Principles and Values	Coordination		
A							B	A - B
<b>BUDGET (C)</b>		<b>3,670,686</b>					<b>3,670,686</b>	
<b>Relief items, Construction, Supplies</b>								
Shelter - Relief	22,320	5,976				5,976	16,344	
Construction - Facilities		13,373				13,373	-13,373	
Construction Materials		17,447				17,447	-17,447	
Clothing & textiles	10,000	531				531	9,469	
Food	10,000	109,022				109,022	-99,022	
Seeds & Plants	146,776	115,521				115,521	31,254	
Water, Sanitation & Hygiene	10,000	582				582	9,418	
Medical & First Aid	3,122	24,029				24,029	-20,907	
Teaching Materials	5,580	337				337	5,243	
Utensils & Tools	19,128	16,419				16,419	2,709	
Other Supplies & Services	1,671,809	65,539				65,539	1,606,270	
Cash disbursement		137,062				137,062	-137,062	
<b>Total Relief items, Construction, Supl</b>	<b>1,898,735</b>	<b>505,838</b>				<b>505,838</b>	<b>1,392,896</b>	
<b>Land, vehicles &amp; equipment</b>								
Land & Buildings	44,643						44,643	
Vehicles	202,679	2,813				2,813	199,866	
Computers & Telecom	43,079	14,677				14,677	28,402	
Office & Household Equipment	20,982	17,892				17,892	3,091	
Medical Equipment	13,438						13,438	
<b>Total Land, vehicles &amp; equipment</b>	<b>324,820</b>	<b>35,382</b>				<b>35,382</b>	<b>289,438</b>	
<b>Logistics, Transport &amp; Storage</b>								
Storage		7,011				7,011	-7,011	
Distribution & Monitoring	127,064	15,348				15,348	111,716	
Transport & Vehicle Costs	239,400	69,249				69,249	170,151	
Logistics Services		3,439				3,439	-3,439	
<b>Total Logistics, Transport &amp; Storage</b>	<b>366,464</b>	<b>95,047</b>				<b>95,047</b>	<b>271,417</b>	
<b>Personnel</b>								
International Staff	122,000	143,295				143,295	-21,295	
National Staff	56,612	31,240				31,240	25,371	
National Society Staff	308,469	120,172				120,172	188,297	
Volunteers		105,312				105,312	-105,312	
<b>Total Personnel</b>	<b>487,081</b>	<b>400,020</b>				<b>400,020</b>	<b>87,061</b>	
<b>Consultants &amp; Professional Fees</b>								
Consultants		30,373				30,373	-30,373	
Professional Fees		2,061				2,061	-2,061	
<b>Total Consultants &amp; Professional Fe</b>		<b>32,433</b>				<b>32,433</b>	<b>-32,433</b>	
<b>Workshops &amp; Training</b>								
Workshops & Training	182,230	52,367				52,367	129,864	
<b>Total Workshops &amp; Training</b>	<b>182,230</b>	<b>52,367</b>				<b>52,367</b>	<b>129,864</b>	
<b>General Expenditure</b>								
Travel	14,500	52,497				52,497	-37,997	
Information & Public Relation	60,963	22,460				22,460	38,503	
Office Costs	23,276	52,413				52,413	-29,136	
Communications	16,920	23,255				23,255	-6,335	
Financial Charges	3,786	51,302				51,302	-47,516	
Other General Expenses	67,878	3,425				3,425	64,453	
Shared Support Services		10,000				10,000	-10,000	
<b>Total General Expenditure</b>	<b>187,324</b>	<b>215,352</b>				<b>215,352</b>	<b>-28,028</b>	

International Federation of Red Cross and Red Crescent Societies

MDRNE005 - Niger - Food Insecurity

Appeal Launch Date: 18 mar 10

Appeal Timeframe: 22 feb 10 to 31 mar 11

Interim Report

Selected Parameters	
Reporting Timeframe	2010/3-2011/3
Budget Timeframe	2010/2-2011/3
Appeal	MDRNE005
Budget	APPEAL

All figures are in Swiss Francs (CHF)

### III. Consolidated Expenditure vs. Budget

Account Groups	Budget	Expenditure					TOTAL	Variance
		Disaster Management	Health and Social Services	National Society Development	Principles and Values	Coordination		
A							B	A - B
<b>BUDGET (C)</b>		<b>3,670,686</b>					<b>3,670,686</b>	
<b>Operational Provisions</b>								
Operational Provisions		69,209					69,209	-69,209
<b>Total Operational Provisions</b>		<b>69,209</b>					<b>69,209</b>	<b>-69,209</b>
<b>Indirect Costs</b>								
Programme & Service Support	224,032	91,364					91,364	132,669
<b>Total Indirect Costs</b>	<b>224,032</b>	<b>91,364</b>					<b>91,364</b>	<b>132,669</b>
<b>Pledge Specific Costs</b>								
Earmarking Fee		12,351					12,351	-12,351
Reporting Fees		4,400					4,400	-4,400
<b>Total Pledge Specific Costs</b>		<b>16,751</b>					<b>16,751</b>	<b>-16,751</b>
<b>TOTAL EXPENDITURE (D)</b>	<b>3,670,686</b>	<b>1,513,762</b>					<b>1,513,762</b>	<b>2,156,924</b>
<b>VARIANCE (C - D)</b>		<b>2,156,924</b>					<b>2,156,924</b>	