

DREF operation update



International Federation
of Red Cross and Red Crescent Societies

Pakistan: Hunza landslides and floods

DREF operation n° MDRPK004
GLIDE n° [LS-2010-000004-PAK](#)
Operation Update 1
15 June 2010

The International Federation of Red Cross and Red Crescent (IFRC) Disaster Relief Emergency Fund (DREF) is a source of un-earmarked money created by the Federation in 1985 to ensure that immediate financial support is available for Red Cross and Red Crescent emergency response. The DREF is a vital part of the International Federation's disaster response system and increases the ability of National Societies to respond to disasters.

Period covered by this update: 6 June to 11 June 2010

History:

- On 5 June 2010, CHF 187,128 (USD 162,160 or EUR 132,492) was allocated from the International Federation's Disaster Relief Emergency Fund (DREF) to support the Pakistan Red Crescent Society (PRCS) in delivering immediate assistance to 14,700 beneficiaries. Unearmarked funds to repay DREF are encouraged.

Summary:

Massive landslides hit Hunza (Gilgit Baltistan) on 4 January 2010, sliding two villages into the Hunza river. This resulted in the blockage of the river and the Karakorum highway, thereby damming up the area. The situation deteriorated during the second half of May as the monsoon season started and temperatures increased, which resulted in further rise of the water level in the dam. According to the latest updates made available during the general coordination meeting organized by UNOCHA, as of 10 June, over 27,600 people have been internally displaced and they are living in more than 24 different camps as well as with host families.



PRCS response team arriving in Hunza. Photo: Source

PRCS has been at the forefront of the response and carrying out preparedness efforts in the affected areas through its provincial and district branches as well as disaster response cells. As an immediate response to the landslide, PRCS provided food packs, non-food item (NFI) kits, medicines, health, and psychosocial (PSP) and restoring family links (RFL) services to more than 330 families (2,331 individuals). In coordination with government and non-governmental agencies, PRCS has been directly managing two camps, one with 209 registered families and another with 73 families, with available in-country resources, providing food and non-food items to people residing in the camps, continuously monitoring the situation and developing contingency plans for potential red zone areas. PRCS plans to scale up its efforts and funds allocated from DREF will be used for the provision of NFIs, emergency shelter materials, and emergency health and water and sanitation interventions for the most vulnerable 2,100 families (14,700 beneficiaries).

PRCS sent an assessment team to Hunza on 12 June 2010. The assessment team will assess the needs of people living in upper stream areas of Hunza. These areas are inaccessible through road and boats, therefore, the team travelling to villages there by helicopter. The team also aimed to have a detailed assessment of the actual needs of the affected people and revise plans on the basis of its assessment. As there are concerns from the PRCS management that emergency shelters might not be needed.

The current operation is expected to be implemented over three months, and will therefore be completed by 5 September 2010; a Final Report will be made available three months after the end of the operation (by 5 December 2010).

The major donors and partners of the DREF include the Danish Red Cross/ Danish government, Irish Red Cross/ Irish government, Japanese Red Cross, Monaco Red Cross/ Monaco government, Netherlands Red Cross/ Netherlands government, Norwegian Red Cross/ Norwegian government, Swedish Red Cross/ Swedish government, Canadian government, Italian government, AusAID, United Kingdom Department for International Development (DFID), DG ECHO, OPEC Fund for International Development, and corporate and private donors. IFRC, on behalf of the Pakistan Red Crescent Society, would like to thank all donors for their generous contributions.

Details of all donors can be found on:

<http://www.ifrc.org/what/disasters/responding/drs/tools/dref/donors.asp>

[<click here to view contact details>](#)

The situation

A series of landslides hit Hunza valley in Gilgit Baltistan province on 4 January 2010. According to local authorities, two villages were slid into the river due to landslides. The landslides blocked Hunza River and created an artificial dam, where water level rose at initially 2.7-3 feet per day. The total water deposit has reached 368 feet and the dam has stretched from 15km to 22km. Since January, Frontier Works Organization (FWO) has been working to excavate a spillway to reduce the risk of massive flooding. The spillway has been completed and any excavation work has been stopped now. Situation deteriorated during the second half of May as the monsoon season started and glaciers melted, resulting in the expansion of the lake. As of 29 May 2010, water started to flow through the spillway at 100 cusecs. According to UNOCHA updates on 8 June 2010, the overall length of the lake formed is 20.2km, with the height of water at 383.7 feet. The water inflow at 4,800 cusecs and the total outflow at 4,900 cusecs and the water level is reducing at 5 inches per 24 hours, which is a very slow progress. The experts are monitoring the situation of lake and as soon as the situation stabilizes, there are chances that boat services to upper stream areas could be resumed.

Details of internally displaced people		
(Data source: UNOCHA Pakistan update, 10 June 2010)		
Districts	Households	Individuals
Hunza-Nagar	1,107	8,997
Gilgit	1,593	14,283
Diamer	391	4,200
Astore	15	120
Total	3,106	27,600

To date, 24 camps have been set up to accommodate over 27,600 individuals of Gilgit and Hunza, which were evacuated in anticipation of outburst.

The PRCS Gilgit Baltistan district branch was among the first one to start relief operation in the affected areas. PRCS-IFRC rapid assessment results and government reports indicate that there is a critical need of food, NFIs and health services to the upper stream areas, where the estimated population is 25,000. The relief efforts of government and non-governmental organizations continue, with additional services needed to cover gaps. PRCS will continue to monitor the situation and work on disaster response and contingency plans. If the situation deteriorates, PRCS will look into mobilizing additional resources with support of IFRC and other Movement partners.

Coordination and partnerships

IFRC is facilitating Red Cross Red Crescent Movement coordination through formal and informal meeting and information sharing activities. PRCS is closely coordinating its activities with the governmental agencies particularly with the national disaster management authority (NDMA), provincial disaster management authority (PDMA) and district authorities. Additionally, other key stakeholders including 27 different agencies (governmental, UN agencies and NGOs) are actively engaged in responding to the Hunza flood-landslide.

In addition, the Federation country office is maintaining coordination with international organizations by participating various coordination and information sharing meetings including the general coordination meeting (GCM) organized by UNOCHA, Pakistan.

Red Cross and Red Crescent action

Progress towards outcomes



PRCS health team attending a patient in Hunza. Photo: IFRC

PRCS has been assisting the affected communities from the first day of the landslide disaster through the district branch staff. The DREF is being utilized for continuation of the ongoing response activities as well as to address the evolving needs of the affected population. Currently, PRCS is managing one camp with 209 families and supporting three other camps. It has been providing food, non-food items, health services and psychosocial support to the affected people. In addition, the National Society is conducting "Gender in disaster" sensitization sessions and "camp management" orientation to the people living in camps in order to address cross-cutting issues in a systematic way. The support of PRCS has been highly appreciated by the affected people, NDMA and other agencies.

Relief distributions (food and basic non-food items)

Outcome:

Immediate needs of at least 14,700 people (2,100 families) residing in camps have been met through relief distributions.

Activities planned:

- Local procurement of relief items according to IFRC standard procedures;
- Despatch and transportation by PRCS to the distribution sites;
- Storage and distribution of relief items by trained volunteers and staff;
- Regular detailed monitoring and reporting of distributions; including lesson learnt workshop;
- Ongoing monitoring and technical advice by the PRCS national headquarters and IFRC.

Progress:

- PRCS has been managing one camp with 209 families and supporting 3 other camps.
- PRCS has developed a detailed plan of action in anticipation of outburst of the dam. The PRCS is planning to revise as the situation is evolving i.e. the displaced population will continue to stay in the camp and with the host families longer period of time therefore the PRCS is commencing another rapid assessment from 12- 14 June 2010, in order to identify the evolving need and revise the DREF plan of action particularly regarding the emergency shelter needs.

In-camp distributions by PRCS:

Location	Tents erected by PRCS	Total NFI distributed by PRCS
Chilmisdass camp *	228 (247 were pitched, but 19 were moved to KIU girls hostel as the need arose there after shifting of people)	316
KIU girls hostel (People shifted from Chilmisdass)	19 (Taken from Chilmisdass)	-
Cheetah colony Gilgit	67	92
Hunza Nagar	45	45
Prince colony Gilgit	0	30
Normal village	22	0
Total	381	483

*The affected people have been shifted to safe locations, after Chilmisdass was declared a red zone.

Emergency health

Outcome:

Reduced health risks through the provision of primary health care services and safe water and sanitation to affected families residing in camps.

Activities planned:

- Assess and regularly monitor the health, water and sanitation situation, and immediate needs of displaced population, particularly women, children and the elderly;
- Deliver preventive and curative services for common health problems of most vulnerable people in camps; establish a referral system with health authorities/facilities in host communities;
- Provide health teams and trained volunteers working in camps with locally-procured basic medicines and first aid kits;
- Conduct activities, through health teams and volunteers, regarding disease prevention, health/hygiene/sanitation promotion, together with the displaced families;
- Produce and distribute information, education, communication (IEC) materials that address key/common health and sanitation problems;
- Provide safe drinking water and sanitation facilities to 300 families;
- Conduct orientation/community sessions on safe use of water treatment products;
- Ensure that the health and sanitation situation and activities in camps are coordinated with local health authorities and relevant agencies;
- Conduct ongoing monitoring and technical advice by the PRCS national headquarters and IFRC.

Progress:

- 3 health teams of PRCS (1 mobile health unit and 2 basic health units) have been working in field. The mobile health unit provides possible support to the affected people outside the camps or in inaccessible villages.
- 7 health sessions were conducted for 91 beneficiaries
- 26 hygiene promotion sessions were conducted for 375 beneficiaries
- 2 showers were constructed in Cheeta colony,
- 3 latrines were constructed in Cheeta colony
- 88 dustbins were distributed in Cheeta colony



PRCS staff conducts a hygiene promotion session. Photo: IFRC

People targeted under health from 19 May to 8 June 2010

Location	Patients treated	Health sessions conducted
Shamshal (near Wah Khan border)	626	0
Passu	458	0
Lower Nagar	439	0
SEC complex	2,024	38
Cheeta colony (women and girls only)	241	31
Nasirabad upper	204	0
Nasirabad lower	323	0
Mayon	283	0
Kharimabad Hunza	316	0
Total	4,914	69

How we work

All IFRC assistance seeks to adhere to the [Code of Conduct for the International Red Cross and Red Crescent Movement and Non-Governmental Organizations \(NGOs\) in Disaster Relief](#) and the [Humanitarian Charter and Minimum Standards in Disaster Response \(Sphere\)](#) in delivering assistance to the most vulnerable.

The IFRC's vision is to inspire, encourage, facilitate and promote at all times all forms of humanitarian activities by National Societies, with a view to preventing and alleviating human suffering, and thereby contributing to the maintenance and promotion of human dignity and peace in the world.

The IFRC's work is guided by [Strategy 2020](#) which puts forward three strategic aims:

1. Save lives, protect livelihoods, and strengthen recovery from disaster and crises.
2. Enable healthy and safe living.
3. Promote social inclusion and a culture of non-violence and peace.

Contact information

For further information specifically related to this operation please contact:

In Pakistan: Pakistan Red Crescent Society:

- In Pakistan, Pakistan Red Crescent Society: phone: Ilyas Khan, Secretary General, mobile: +92 333 511 4223; email: sec.general@prcs.org.pk.

In Pakistan: IFRC country office:

- In Pakistan, Federation country office: Pepe Salmela, Head of country office, phone: +92 308 888 8954; email: pepe.salmela@ifrc.org.
- Younos Karim, Programme/ Movement coordinator, phone: + 92 300 555 4503; email: younos.karim@ifrc.org.

In India: IFRC South Asia regional office:

- Azmat Ulla, Head of regional office, phone: +91 11 2411 1125; fax: +91 11 2411 1128; email: azmat.ulla@ifrc.org.
- Michael Higginson, Regional programme coordinator, +91 11 2411 1125; fax: +91 11 2411 1128; email: michael.higginson@ifrc.org.

In Malaysia: IFRC Asia Pacific zone office, phone: +603 9207 5700

- Alistair Henley, Head of Zone, email: alistair.henley@ifrc.org.
- Elzat Mamutalieva, operations coordinator phone: +603 9 207 5727; mobile: +60 19 27 44 960; email: elzat.mamutalieva@ifrc.org.
- Jeremy Francis, regional logistics coordinator, phone: +603 9207 5753, fax: +603 2168 8573, email: jeremy.francis@ifrc.org.
- Penny Elghady, resource mobilization and PMER coordinator, phone: +603 9207 5775, email: penny.elghady@ifrc.org.
- Please send all funding pledges to zonerm.asiapacific@ifrc.org.
- For media enquiries: Jason Smith, zone communications manager, mobile: +6012 387 0829, email: jason.smith@ifrc.org.

[<click here to return to the title page>](#)

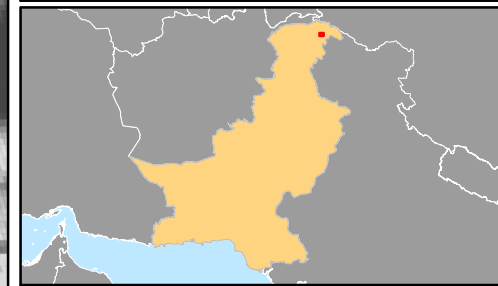
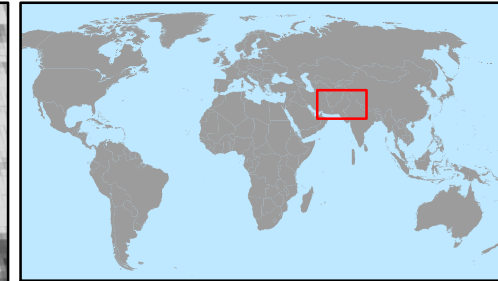
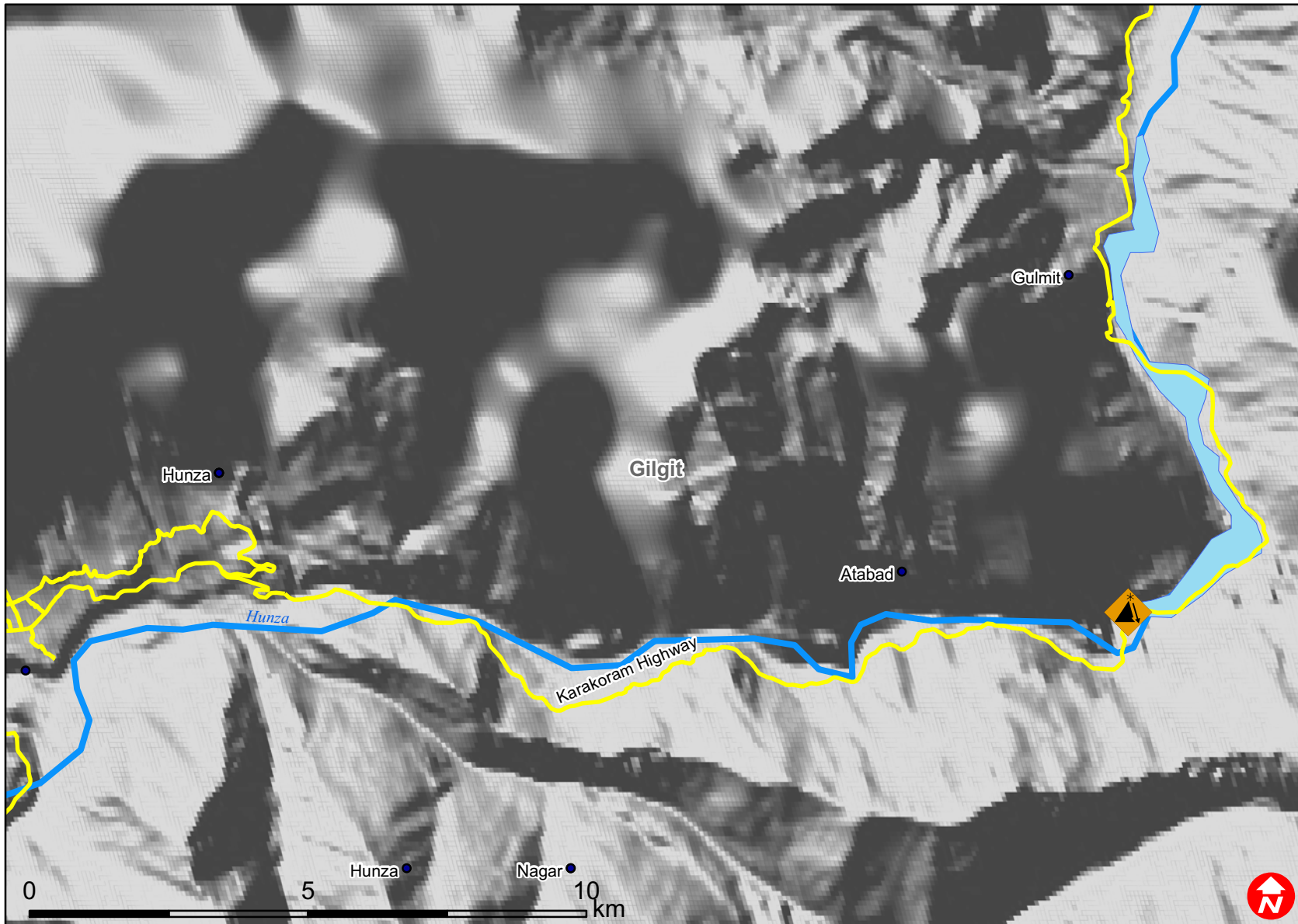
Pakistan: Hunza Landslides & Floods

DREF BUDGET SUMMARY

Budget Group	Total Budget CHF
Shelter - Relief	93,000
Water & Sanitation	14,619
Medical & First Aid	25,000
Teaching Materials	2,500
Other Supplies & Services & Cash Disbursements	4,500
Total Supplies	139,619
Storage	5,120
Distribution & Monitoring	16,000
Transport & Vehicle Costs	2,300
Total Transport & Storage	23,420
National Society Staff	1,800
Total Personnel	1,800
Workshops & Training	3,168
Total Workshops & Training	3,168
Travel	1,500
Information & Public Relation	4,000
Communications	1,200
Other General Expenses	1,000
Total General Expenditure	7,700
Program Support	11,421
Total Programme Support	11,421
TOTAL BUDGET	187,128



Pakistan: Hunza landslide and floods



- Places
- ▲ Landslide
- Highway