

# DREF operation



International Federation  
of Red Cross and Red Crescent Societies

## Serbia: Floods

DREF operation n° MDRRS005  
GLIDE n° FL-2010-000250-SRB  
8 December, 2010

The International Federation's Disaster Relief Emergency Fund (DREF) is a source of un-earmarked money created by the Federation in 1985 to ensure that immediate financial support is available for Red Cross and Red Crescent emergency response. The DREF is a vital part of the International Federation's disaster response system and increases the ability of National Societies to respond to disasters.

**CHF 59,800 (USD 61,049 or EUR 45,757) has been allocated from the Federation's Disaster Relief Emergency Fund (DREF) to support the National Society in delivering immediate assistance to some 4,000 beneficiaries. Unearmarked funds to repay DREF are encouraged.**

**Summary:** Due to the heavy rain in Montenegro, Bosnia and Herzegovina/ Republic of Srpska, the water level in rivers Drina and Lim has been on a steady increase since 1 December until 3<sup>rd</sup> December, with water spilling out of the river beds and flooding the houses, buildings and agricultural land in five municipalities in the western Serbia. 3000 people were evacuated between 1<sup>st</sup> and 3<sup>rd</sup> December and approximately 720 houses are under water at the moment. The levels of Drina and Lim rivers have been receding since 4<sup>th</sup> December, however the river Sava's water level is on the rise further endangering several municipalities along its bank, including the capitol, Belgrade. The Red Cross of Serbia has reacted immediately, doing rapid assessment of needs in the five affected municipalities and distributing food and non food items to affected and evacuated people from 960 households. This DREF operation will include replenishment of emergency stocks of the Red Cross of Serbia, another distribution of hygiene parcels and assistance with water draining, mud removal and dehumidifying of living facilities for approximately 4000 people. The operation is expected to be implemented over four months and will be therefore completed by the end of March 2011. A final report will be available by the end of June 2011 (three months after the end of operation).



Ljubovija under water. Photo: Red Cross of Serbia

[<click here for the DREF budget, here for contact details, or here to view the map of the affected area>](#)

## The situation

Due to the heavy rain in Montenegro, Bosnia and Herzegovina/ Republic of Srpska, the water level in rivers Drina and Lim has been on a steady increase since 1 December. The water spilled from river beds between 2<sup>nd</sup> and 3<sup>rd</sup> December, flooding houses and agricultural land in the municipalities of Loznica, Mali Zvornik and

Ljubovija (Drina) as well as Prijepolje (Lim). The water level stagnated after three days and started decreasing after 4<sup>th</sup> December, however, the heavy rainfalls in northwest as well as increased volumes of water coming in from Drina and Lim caused the level of river Sava to rise, endangering the municipality of Šabac. Flood defences have been built along the Sava bank in the length of 77 kilometres. In Belgrade, the water level is expected to reach the line of regular flood defence between 8 and 9 December, but no major floods are foreseen.

Prijepolje was without drinking water between 2<sup>nd</sup> and 3<sup>rd</sup> December with some 100 people evacuated but at the moment safe water is available in all of the affected communities, through distribution of mobile water in some of the villages. A bridge was destroyed in Brodarevo, municipality of Prijepolje by water. In Bogatić, the high level of subterranean water is affecting more than 150 acres of farmland as well. Electricity supply is regular in most of the communities after the first two days where there were shortages.



Fighting the floods in Ljubovija. Photo: Red Cross of Serbia

Three border crossings between Serbia and Bosnia and Herzegovina were closed for traffic in the first three days due to safety concerns, as the roads were flooded.

Emergency has been declared by the authorities in municipalities of Ljubovija, Prijepolje and Loznica.

At the moment, the water level of Drina and Lim has been on a decrease for three days, however, approximately 5000 flooded houses, buildings and facilities are still under water and there are no signs of retreat. There are approximately 3000 people evacuated from some 720 households in Ljubovija, Mali Zvornik, Loznica, Priboj and Prijepolje. Majority of them

are staying with their relatives while a small number is in collective accommodation at hotels and schools. The damage to their houses, land and possessions will be assessed after the water has retreated.

## Coordination and partnerships

Ministry of Public Administration and Local Government will allocate emergency aid of RSD 9.5 million (95,000 €) to municipalities in Serbia affected by the floods. The funds are earmarked for floods rehabilitation and for repairing the damage caused by water.

## Red Cross and Red Crescent action

The Red Cross of Serbia assessment teams have been active in all of the affected municipalities. The most pressing needs of the affected and evacuated population were identified and the emergency distribution of relief items was organised between 3<sup>rd</sup> and 4<sup>th</sup> December. The following table shows the breakdown of distributed goods:

Unit	Items	units	Municipalities				Šabac	Mali Zvornik	Total
			Prijepolje	Priboj	Ljubovija	Loznica			
1.	Family hygiene parcels	pieces	80	30	200	350	170	130	<b>960</b>
2.	Disinfectant	litres	80	30	200	300	-	100	<b>710</b>
3.	Rubber boots	pairs	75	30	100	150	30	-	<b>385</b>
4.	Tea	boxes	100	50	250	350	-	-	<b>750</b>
5.	Canned meat beef –150gr	pieces	450	150	600	240	-	-	<b>1.440</b>
6.	Meat pate –150 gr	pieces	450	60	-	240	-	-	<b>750</b>

7.	Canned fish – 125 gr	pieces	450	240	600	240	-	-	1.530
8.	Canned meat Pork –150gr	pieces	-	-	600	-	-	-	600
9.	Ready to eat meals – beans/ sausage 300-400gr	pieces	-	-	-	350	-	-	350
10.	Ready to eat meals – beans/ bacon 300-400gr	pieces	-	-	200	350	-	-	550
11.	Ready to eat meals – risotto 300-400gr	pieces	450	150	200	-	-	-	800
12.	Ready to eat meals – cabbage 300-400gr	pieces	-	-	200	350	-	-	550
13.	Blankets	pieces	150	60	200	300	300	-	1010
14.	Red Cross of Serbia marking	pieces	40	20	20	25	-	-	105
15.	<b>Equipment (to be returned to the RCS warehouse after use)</b>								
16.	Dehumidifiers	pcs	10	10	15	15	-	-	50
17.	Mud pump	pcs	10	5	10	10	-	-	35
18.	Disinfection pumps	pcs	5	5	5	5	-	-	20

**Table 1: The relief items distributed by the Red Cross of Serbia as well as the equipment prepared for further operation**

## The needs

Beneficiary selection: The Red Cross will in its efforts be focusing on the most vulnerable population: those below the poverty line, whose capacity of replenishing the lost goods and possessions is very low, the children, the older vulnerable people, single mothers and the socially marginalized families.

At the moment, according to the Red Cross of Serbia assessment in all the affected municipalities, some of the immediate needs of the evacuated population in terms of food and hygiene have been met through the emergency stock disbursement; however the needs still persist and will be met through subsequent distribution. The Red Cross of Serbia will assist with water/ mud removal and with dehumidification and disinfection of households as soon as the water has receded. It is estimated that for this activity the operational timeframe will be up to three months after the water has receded, including another round of distribution of hygiene parcels.



**Assessment in Ljubovija. Photo: Red Cross of Serbia**

The population to be covered by the activities includes all the evacuated people as well as the most vulnerable from the affected but non-evacuated households, amounting to approximately 1000 households and approximately 4000 people.

## The proposed operation

### Relief distributions (food and basic non-food items)

**Outcome: The necessary relief items for the most vulnerable among the affected population (canned food, blankets, rubber boots) will be distributed to 4000 beneficiaries according to assessment and selection criteria that identify actual needs and vulnerable groups.**

Outputs (expected results)	Activities planned
The food and non-food needs of 4000 of the most vulnerable and evacuated people for four months will be met through provision of adequate relief	<ul style="list-style-type: none"> <li>• Conduct rapid emergency needs and capacity assessments.</li> <li>• Develop beneficiary targeting strategy and registration system to deliver intended assistance.</li> <li>• Distribute relief supplies and control supply movements from point of dispatch to end user.</li> </ul>

items.	<ul style="list-style-type: none"> <li>• Monitor and evaluate the relief activities and provide reporting on relief distributions.</li> <li>• Develop an exit strategy.</li> </ul>
--------	--

## Water, sanitation, and hygiene promotion

**Outcome: For 1,000 affected families/ 4,000 people the risk of water-borne and water related diseases has been reduced through the provision of adequate sanitation and hygiene promotion and the population was assisted in its return to normal living within a period of four months.**

Outputs (expected results)	Activities planned
4,000 vulnerable people from the affected areas manage to preserve their health through the use of hygiene items, rubber boots and disinfectants in the four months following the flooding and evacuation.	<ul style="list-style-type: none"> <li>• Conduct rapid emergency needs and capacity assessments.</li> <li>• Develop beneficiary targeting strategy and registration system to deliver intended assistance.</li> <li>• Distribute relief supplies and control supply movements from point of dispatch to end user.</li> <li>• Assist with disinfecting the living quarters so that the population can return to safe environments</li> <li>• Monitor and evaluate relief activities and provide reporting on distributions.</li> <li>• Develop an exit strategy.</li> <li>• Maintain contact and coordination with the local crisis headquarters in the affected areas.</li> </ul>
4,000 vulnerable people from the affected areas manage to resume normal living in their households within four months from the floods.	<ul style="list-style-type: none"> <li>• Conduct rapid emergency needs and capacity assessments.</li> <li>• Develop beneficiary targeting strategy and registration system to deliver intended assistance.</li> <li>• Provide equipment for water drainage and house cleaning.</li> <li>• Provide house cleaning kits (disinfectant, mops, wall paint, toolkits).</li> <li>• Provide training to the municipal Red Cross disaster management teams in efficient response, use of equipment, internal and external communication, monitoring and reporting.</li> <li>• Conduct a lessons learned workshop for local responders, based on the work already done through the municipal disaster preparedness project.</li> <li>• Monitor and evaluate relief activities and provide reporting on distributions.</li> <li>• Develop an exit strategy.</li> <li>• Maintain contact and coordination with the local crisis headquarters in the affected areas.</li> </ul>

## How we work

All International Federation assistance seeks to adhere to the [Code of Conduct for the International Red Cross and Red Crescent Movement and Non-Governmental Organizations \(NGO's\) in Disaster Relief](#) and the [Humanitarian Charter and Minimum Standards in Disaster Response \(Sphere\)](#) in delivering assistance to the most vulnerable.

The International Federation's vision is to inspire, encourage, facilitate and promote at all times all forms of humanitarian activities by National Societies, with a view to preventing and alleviating human suffering, and thereby contributing to the maintenance and promotion of human dignity and peace in the world.

The International Federation's work is guided by [Strategy 2020](#) which puts forward three strategic aims:

1. Save lives, protect livelihoods, and strengthen recovery from disaster and crises.
2. Enable healthy and safe living.
3. Promote social inclusion and a culture of non-violence and peace.

## Contact information

For further information specifically related to this operation please contact:

- **In the Red Cross of Serbia:** Vesna Milenović, Secretary General; [secretary@redcross.org.rs](mailto:secretary@redcross.org.rs); phone: +381 11 30 32 117; fax: +381 11 634 348
- **In the Country Representation for Serbia:** Nenad Andrić, Head of Office, Belgrade, email:

[nenad.andric@ifrc.org](mailto:nenad.andric@ifrc.org) ; phone: +381 113282202; fax: +381 113281791

- **In Europe Zone Office:** Slobodanka Curic, Disaster Management Coordinator, Budapest, phone: +361 8884 510; fax: +36 1 336 1516; email: [slobodanka.curic@ifrc.org](mailto:slobodanka.curic@ifrc.org)
- **In Geneva:** Pablo Medina, Operations Coordinator; phone: +41 22 730 4381; email: [pablo.medina@ifrc.org](mailto:pablo.medina@ifrc.org)

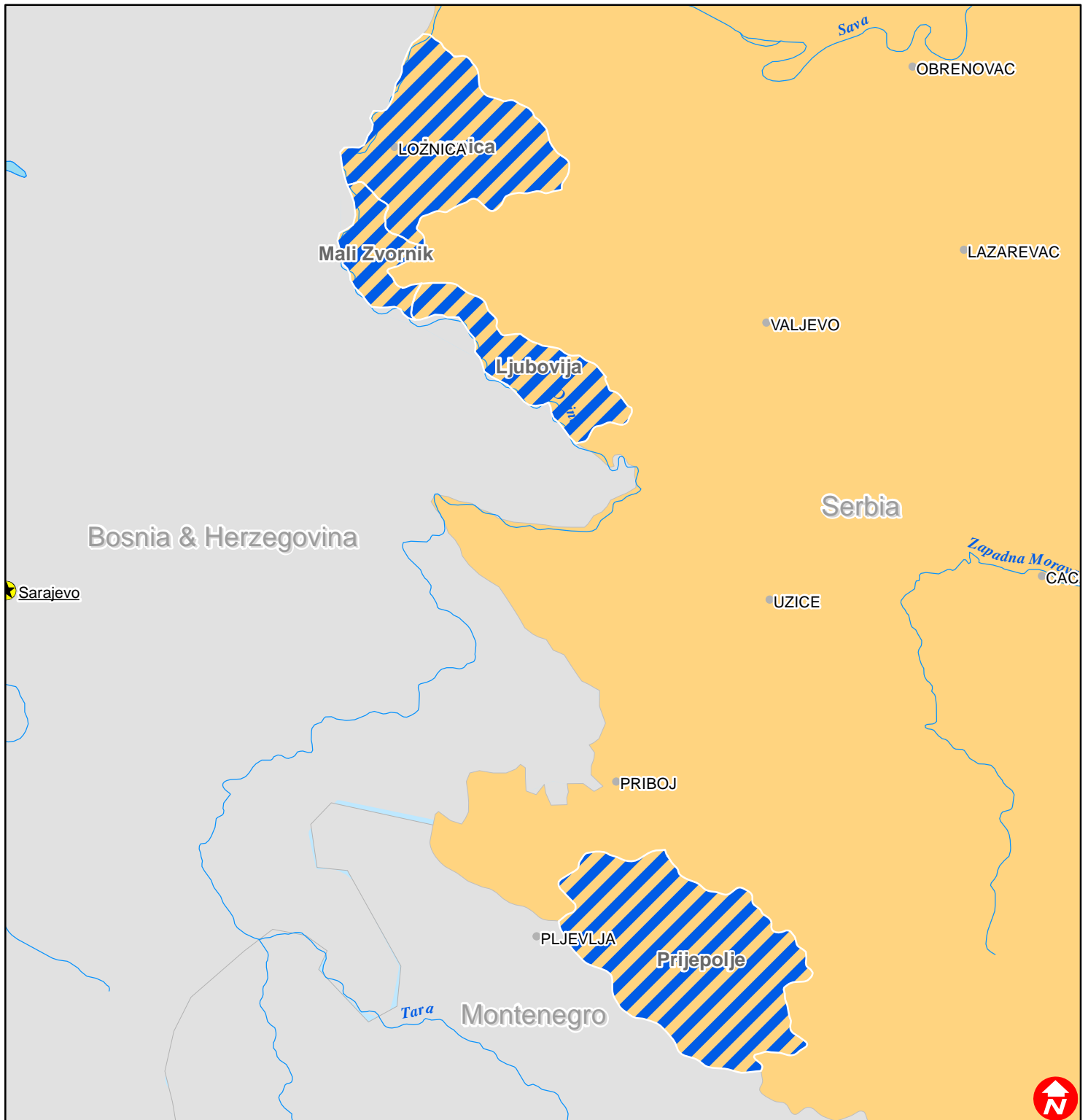
[<DREF budget and map below; click here to return to the title page>](#)

**BUDGET SUMMARY**

Budget Group	DREF Grant Budget	TOTAL BUDGET CHF
Clothing & Textiles	9,500	9,500
Food	10,500	10,500
Water & Sanitation	15,400	15,400
Teaching Materials	2,500	2,500
Ustensils & Tools	2,000	2,000
<b>Total Supplies</b>	<b>39,900</b>	<b>39,900</b>
Distribution & Monitoring	2,000	2,000
Transport & Vehicle Costs	2,000	2,000
<b>Total Transport &amp; Storage</b>	<b>4,000</b>	<b>4,000</b>
National Staff	3,500	3,500
National Society Staff	3,500	3,500
<b>Total Personnel</b>	<b>7,000</b>	<b>7,000</b>
Workshops & Training	2,500	2,500
<b>Total Workshops &amp; Training</b>	<b>2,500</b>	<b>2,500</b>
Travel	500	500
Information & Public Relation	2,000	2,000
Communications	150	150
Other General Expenses	100	100
<b>Total General Expenditure</b>	<b>2,750</b>	<b>2,750</b>
Program Support	3,650	3,650
<b>Total Programme Support</b>	<b>3,650</b>	<b>3,650</b>
<b>TOTAL BUDGET</b>	<b>59,800</b>	<b>59,800</b>



# Serbia: Floods



 Affected areas