

# DREF operation



International Federation  
of Red Cross and Red Crescent Societies

## Sudan: Floods

DREF operation n° MDRSD009  
GLIDE n° FL-2010-000139-SDN  
27 August, 2010

The International Federation's Disaster Relief Emergency Fund (DREF) is a source of un-earmarked money created by the Federation in 1985 to ensure that immediate financial support is available for Red Cross and Red Crescent emergency response. The DREF is a vital part of the International Federation's disaster response system and increases the ability of National Societies to respond to disasters.

**CHF 346,944 (USD 337,817 or EUR 265,791) has been allocated from the Federation's Disaster Relief Emergency Fund (DREF) to support the National Society in preparing to deliver immediate assistance to some 3,270 households (16,350 beneficiaries) affected by floods. Unearmarked funds to repay DREF are encouraged.**

**Summary:** The rains predicted in Sudan only started during the first week of July 2010, gradually intensified and resulted in destruction of property and infrastructure. According to the Metrological Authority (SMA) and Ministry of Irrigation, continued heavy rains over the Ethiopian highlands caused rising trends of the Blue Nile water level. Sobat river running from Ethiopian and feeding into the Nile increased the water levels in the Upper Nile State, Jonglei and central Equatoria as a result of the heavy rains. Gash is overflowing its bank because of the heavy rain over Eritrean highland, endangering Kassala State.



River Nile state, Flash Floods, 2010

On 25 August 2010, the Civil Defence in Sudan estimated 50 deaths related to the floods and the displacement of thousands of people in several parts of the country such as in River Nile, Gedaref, White Nile, North Kordofan, North Bahr El Ghazal, Sennar, Central Equatoria, and Jonglei states.

In response to the effects of the flash floods, the Under Secretary of Ministry of Humanitarian Affairs in mid August requested the Sudanese Red Crescent Society (SRCS) to intervene and assist the affected people. The SRCS, with support of the IFRC disaster relief emergency fund (DREF) plans to assist 3,270 families for a period of three months. The SRCS focuses on the eight most affected areas with a total of 13,078 families, thus intend to assist 25 percent of the affected. This is the gap from actions of other humanitarian agencies including Civil Defence, Local Governments, National Youth Union, Zhakati (charity) Chamber. SRCS relief operation focuses on assisting the affected families with non-food items (NFI), health education, hygiene promotion, access to clean water and sanitation services.

[<click here for the DREF budget, here for contact details, here to view the map of the affected area>](#)

## The situation

The heavy rains in Sudan started during the first week of July 2010, and resulted in flash floods that damaged property and infrastructure in some part of the country. During the initial stage of the rainy season, the communities and local authorities supported by the Civil Defence managed to address the needs of the few affected families. As the rains gradually intensified, they caused flash floods, which culminated into extensive flooding and cumulative effects on the vulnerable communities. The floods mainly affected the following eight states: River Nile, Gedaref, White Nile, North Kordofan, North Bahr El Ghazal, Sennar, Central Equatoria, and Jonglei. The number of people affected increased whilst the communities were not able to cope with damage, which prompted the Civil Defence to seek for assistance in response actions.

According to the daily flood watch update (23 Aug 2010), issued by the Early Warning and Emergency Information Centre (EWIC); moderate to light rainfall is predicted over Greater Kordofan, greater Darfur, Central Equatoria, Eastern Equatorial and Jonglie, Upper Nile and White Nile state six days cumulative rainfall outlook; moderate to heavy rains are expected over Eastern states namely Kassala, Gedaref, as well as Sinnar, Blue Nile, Upper Nile, Greater Kordofan, Greater Darfur and Greater Bahr Al-Ghazal. Flash floods are expected over Greater Kordofan and Darfur, Jonglei, Unity and Central Equatoria. Heavy rainfall is forecasted over the highland of Ethiopia. Whilst reports on the impact of the floods are still coming from various states; the figures in table 1 below are likely to increase.

**Table 1: Statistics on the effects of the floods as at 25 August 2010**

No	State	Missing	Death toll	Injured	Houses totally collapsed	Houses partially damaged	Total affected households
1	Red Sea	11	13	4	1,129	1,680	2,809
2	Kassala	0	0	0	171	288	459
3	North Kordofan	0	0	0	0	128	128
4	Sinnar	0	0	0	491	320	811
5	Gadaref	0	5	9	150	248	398
6	Gezira	0	0	0	0	87	87
7	North Darfur	0	0	0	365	638	1,003
8	River Nile	0	2	0	430	1,528	1,958
9	White Nile	0	1	2	516	1,610	2,126
10	Northern Bahr Elghazal (Awil)	0	0	0	0	2000	2,000
11	Northern State	0	0	0	884	461	1,345
12	Central Equatoria	0	0	0	0	1,857	1,857
13	Jonglei	0	0	0	0	3,800	3,800
<b>Total of 13 areas</b>		<b>11</b>	<b>21</b>	<b>15</b>	<b>4,136</b>	<b>14,645</b>	<b>18,781</b>
<b>Total of 8 target areas</b>							<b>13,078</b>

A total of the eight target areas (North Kordofan, Sinnar, Gadaref, River Nile, White Nile, Northern Bahr Elghazal (Awil) Central Equatoria and Jonglei) have **13,078** households. Out of these households 3,270 households (25 percent) will be covered by SRCS.

## Coordination and partnerships

The SRCS Branches in the flood-prone areas have been active, and with Federation support, are working closely with State Government, humanitarian agencies and local communities on resource mobilization, logistics, and other relief activities. The Government of Sudan has established a coordination mechanism known as the High Committee of Civil Defence, led by the Humanitarian Aid Commission (HAC). The SRCS is a member of this committee and the National Council of Civil Defence. The SRCS's headquarters in Khartoum is also working closely with the Ministry of Irrigation, Meteorological Department and other stakeholders in monitoring the weather conditions in the country. The UN's Joint Logistics Centre (JLC) is also part of the flood task force and is facilitating the delivery of relief items in the affected areas.

The ICRC and Partner National Societies compose the Movement coordination mechanisms. Within the Movement, coordination will be carried out through regular task force meetings. Regular situation reports prepared by the SRCS emergency office will be shared with partners and other stakeholders. The Partner National Societies with presence in Sudan (Austrian, Danish, German, Netherlands, Norwegian, Spanish and Swiss Red Cross and the Qatar Red Crescent consistently receive information on the floods situation and SRCS operation. The SRCS is still in need of the partners' technical and funding support for this operation. The SRCS has also engaged the ICRC on discussion on possible support at branch level. In Kutum (north Darfur) ICRC provided 254,000 non food items towards the SRCS response operation.

## Red Cross and Red Crescent action

The SRCS flood emergency teams responded by carrying out a rapid assessment in the affected areas, working closely with the local Red Crescent volunteers and community members. The assessment revealed that mostly the traditionally built houses of mud brick walls have been destroyed or severely damaged due to rains saturating straw and mud roofs. Therefore, the families in living in these houses were in need of relief assistance as their household property was damaged.

A flood emergency office has been established in SRCS headquarters in Khartoum. The office will ensure coordination of assessment and dissemination of findings and reports, the distribution of relief items and implementation of other planned activities. The flood emergency office composed of key National Society staff and representatives of the IFRC Country Representation Office will also coordinate mobilization of resources. The SRCS has updated its floods contingency plan into a clear plan of action (PoA) aimed at addressing the immediate needs of the affected families. The PoA has been shared with the Movement partners for coordination purpose and as a resource mobilisation tool.

The response operation is coordinated at the headquarters and implementation led by the Branches. The SRCS has been in constant contact with the affected Branches and local authorities collecting information on the effects of the floods and the needs of the affected families. The assessments will be continued in order to ensure accuracy in the statistics and to provide for the development of the operational plans.

**Table 2: The non-food items distributed by SRCS as at 25 August 2010:**

No	Items	quantities	State/locations	State/locations
1	Kitchen sets	1,000	River Nile State - Shendi town	Red Sea Agig Locality
2	Empty sack	20,000	Gadaref State Alwahida, Alfashaga and Alkrida	
3	Aqua tabs (pcs)	350,000	River Nile - Shendi town	White Nile –Gabalein and Salam localities
4	Piece of soap	24,000	Red Sea Agig Locality	River Nile – shendi town and Mesiktab
5	Digging tools (axes, hoes, shovels)	480	Gadaref State - Alwahida, Alfashaga and Alkrida	
6	Oral Rehydration Solution sachets	32,000	White Nile- Alsalam locality	River Nile - Shendi town

All the states along the Blue Nile, White Nile and River Nile have established monitoring points (tents) and SRCS volunteers stationed there are monitoring the situation and indentifying areas with critical needs. The volunteers are working in collaboration with the local authorities in relief activities as well as in tracing services. In Kassala and Red Sea, the volunteers carried out vector control campaigns and conducted house-to-house awareness related to waterborne diseases. In River Nile, the volunteers assist in a mobile clinic of Ministry of Health.

The floods operation is mostly supported by the IFRC DREF on the distribution of non-food items such as mosquito nets, plastic sheets, aqua tabs, soap, kitchen sets and jerry cans. Activities on hygiene promotion, vector control, water chlorination and health education will take off soon Approximately 200 volunteers in the eight affected states will support the implementation of various activities, more volunteers will be mobilized as necessary. The DREF will also support National Society development initiatives, particularly in disaster response.

## The needs

According to the findings of the initial assessment the priority needs are NFIs) such as tarpaulin and kitchen sets, blankets and empty jerry cans. The health system is expected to be critically affected by the floods and epidemics including malaria, cholera and dysentery are inevitable. The SRCS proposes to support delivery of preventive health services and promotion of hygiene in order to prevent outbreak of diseases. The National Society will strengthen community-based surveillance for early detection of outbreaks. The proposed activities for water and sanitation will ensure access to safe water and promotion of hygiene to prevent water-borne diseases. Identified needs include water treatment and hygiene promotion.

## The proposed operation

To provide immediate relief assistance to an initial 3,270 households affected by flooding in eight states of Sudan.

Relief distributions (basic non-food items)	
Objective: To provide non-food items to an initial 3,270 affected households for three months	
Expected results:	Activities
<ul style="list-style-type: none"> <li>3,270 households receive essential household items for immediate needs.</li> <li>Vulnerability of the targeted population is reduced.</li> </ul>	<ul style="list-style-type: none"> <li>Continue assessments in flooding-affected States in alongside the distribution of NFI;</li> <li>Mobilize 200 volunteers and provide them with necessary tools in the targeted eight states for various response activities including distribution of relief items, health education and hygiene promotion;</li> <li>Procure 30,000 empty sacks for communities in high risk area to strengthen their coping mechanism capacity and readiness level;</li> <li>Provide affected households with 3,270 plastics sheets;</li> <li>Provide 2,270 kitchen sets (already 1,000 delivered);</li> <li>Provide 6,540 blankets;</li> <li>Provide 6,540 empty jerry cans.</li> </ul>

Water, sanitation, and hygiene promotion	
Objective: To meet the basic health needs of at least 3,270 households affected	
Expected results:	Activities
<ul style="list-style-type: none"> <li>Access to safe drinking water is increased and secured for 3,270 households.</li> <li>The threat of vector and water borne diseases reduced.</li> </ul>	<ul style="list-style-type: none"> <li>Procure and distribute 16,350 pieces of soap;</li> <li>Procure and distribute 6,540 mosquito nets;</li> <li>Procure and distribute 350,000 aqua taps;</li> <li>Procure and distribute 50 litres insecticide;</li> <li>Organize hygiene promotion activities among the affected and high risk population.</li> </ul>

Emergency Health	
Objective: To provide health education to an initial 3,270 affected households for three months	
Activities planned:	Activities
<ul style="list-style-type: none"> <li>Increased awareness of safe hygiene and sanitation practices.</li> </ul>	<ul style="list-style-type: none"> <li>Organize health education activities among the affected and high risk population.</li> </ul>

## Monitoring and Evaluation

The day-to-day monitoring of the operation will coordinated by be SRCS branches but supervised closely by the national headquarters to ensure accountability, transparency and financial management of the operation. The affected states will be visited by the SRCS monitoring teams on regular basis. This will help identify and, where possible and necessary, resolve any problems. The situation in the field will be reported on through regular reports. Reports will provide necessary information in relation to: the progress of the operation; changes in the situation during the reporting period and challenges and solutions to overcome then as well as the unmet needs of the affected communities.

## How we work

All International Federation assistance seeks to adhere to the [Code of Conduct for the International Red Cross and Red Crescent Movement and Non-Governmental Organizations \(NGO's\) in Disaster Relief](#) and the [Humanitarian Charter and Minimum Standards in Disaster Response \(Sphere\)](#) in delivering assistance to the most vulnerable.

The International Federation's vision is to inspire, encourage, facilitate and promote at all times all forms of humanitarian activities by National Societies, with a view to preventing and alleviating human suffering, and thereby contributing to the maintenance and promotion of human dignity and peace in the world.

The International Federation's work is guided by [Strategy 2020](#) which puts forward three strategic aims:

1. Save lives, protect livelihoods, and strengthen recovery from disaster and crises.
2. Enable healthy and safe living.
3. Promote social inclusion and a culture of non-violence and peace.

## Contact information

**For further information specifically related to this operation please contact:**

- **In Sudan:** Osman Gafer Abdalla, Secretary General Sudanese Red Crescent Society; Phone: +249.8.378.48.89 email: [srcs\\_sg@yahoo.com](mailto:srcs_sg@yahoo.com)
- **In Sudan:** IFRC Country Representation Office; Dr. Dietrich Fischer, Country Representative; Khartoum; Phone: +249.9.123.04.023; email: [dietch.fischer@ifrc.org](mailto:dietch.fischer@ifrc.org)
- **In East Africa Region:** Eastern Africa Regional Representation Office: Alexander Matheou; Regional Representative, , phone: +254.20.283.5124; fax: 254.20.271.27.77; Email: [alexander.matheou@ifrc.org](mailto:alexander.matheou@ifrc.org)
- **In Geneva:** Pablo Medina, Operations Coordinator for Eastern and Southern Africa; Phone: +41.22.730.43.81; fax: +41 22 733 0395; email: [pablo.medina@ifrc.org](mailto:pablo.medina@ifrc.org)

For Performance and Accountability (planning, monitoring, evaluation and reporting (enquiries):

- In IFRC Africa Zone: Terrie Takavarasha; Performance and Accountability Manager, Johannesburg; Email: [terrie.takavarasha@ifrc.org](mailto:terrie.takavarasha@ifrc.org); Phone: Tel: +27.11.303.9700; Fax: +27.11.884.3809; +27.11.884.0230

[<DREF budget and map below; click here to return to the title page>](#)

## **APPEAL BUDGET SUMMARY**

Floods in Sudan

MDRSD009

### **RELIEF NEEDS**

Shelter	63,765
Construction Materials	0
Clothing & Textiles	65,400
Food	0
Seeds & Plants	0
Water & Sanitation	28,483
Medical & First Aid	0
Teaching Materials	0
Utensils & Tools	92,586
Other Supplies & Services	0

---

**Total Relief Needs** **250,235**

### **CAPITAL EQUIPMENT**

Land & Buildings	0
Vehicles Purchase	0
Computers & Telecom Equipment	0
Office/Household Furniture & Equip.	0
Medical Equipment	0
Other Machinery & Equipment	0

### **TRANSPORT, STORAGE & VEHICLES**

Storage - Warehouse	1,247
Distribution & Monitoring	3,742
Transport & Vehicles Costs	6,669

### **PERSONNEL**

International Staff	0
Regionally Deployed Staff	0
National Staff	0
National Society Staff	52,500
Consultants	0

### **WORKSHOPS & TRAINING**

Workshops & Training	0
----------------------	---

### **GENERAL EXPENSES**

Travel	0
Information & Public Relations	7,000
Office running costs	0
Communication Costs	3,000
Professional Fees	0
Financial Charges	0
Other General Expenses	0

### **PROGRAMME SUPPORT**

Programme Support - PSR	22,551
-------------------------	--------

---

**Total Operational Needs** **346,944**

---

**Total Appeal Budget (Cash & Kind)** **346,944**

---

**Available Resources\*\*** **0**

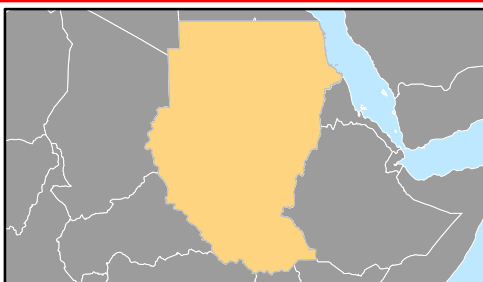
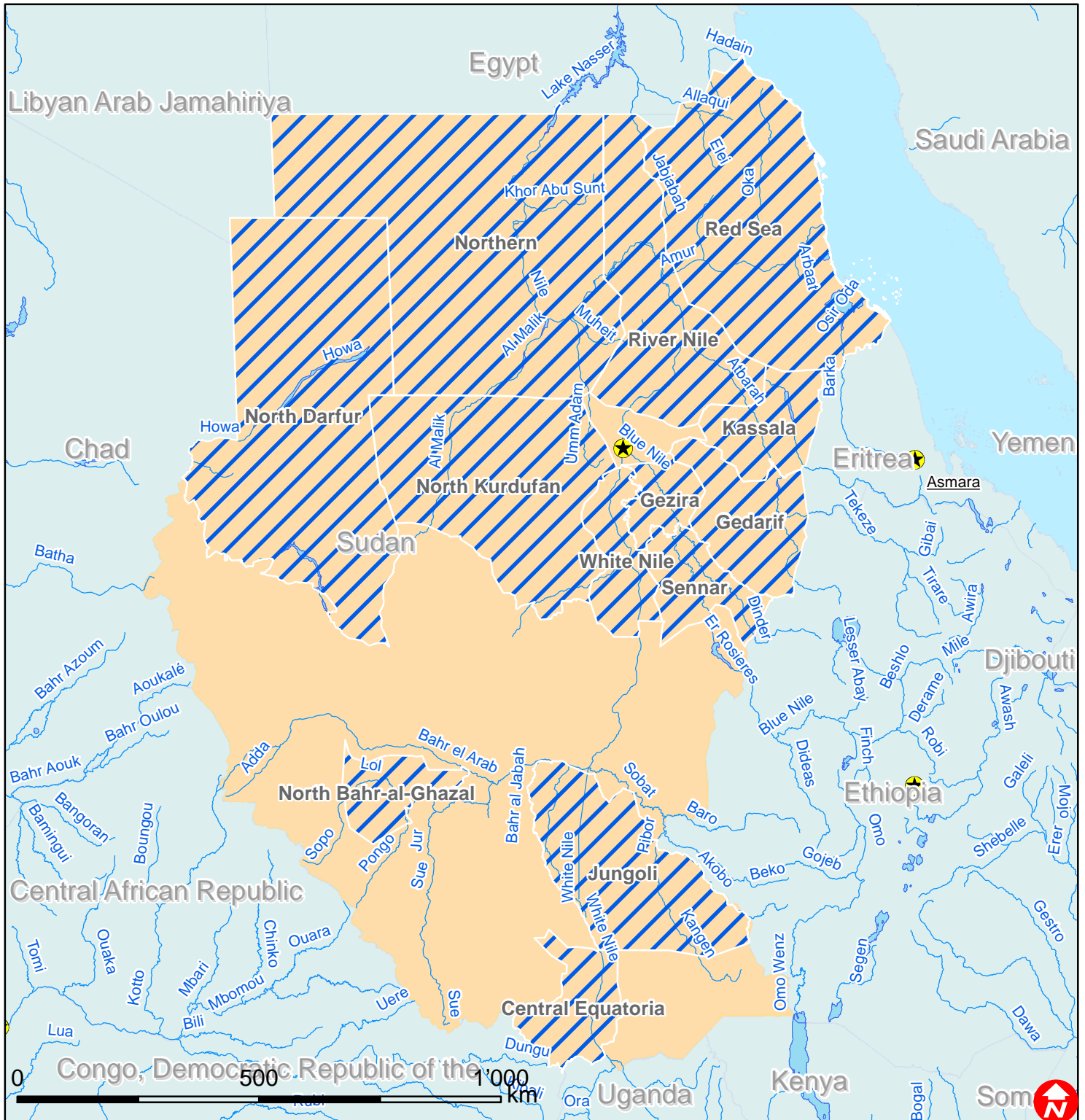
---


**Net Request** **346,944**

---



# Sudan: Floods



 Affected states