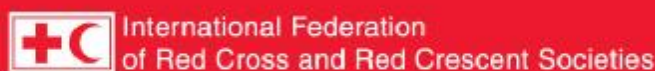


# DREF operation



## Togo: Floods

DREF operation n° MDRTG003  
GLIDE n° FL-2010-000215-TGO  
28 October, 2010

The International Federation of Red Cross and Red Crescent (IFRC) Disaster Relief Emergency Fund (DREF) is a source of un-earmarked money created by the Federation in 1985 to ensure that immediate financial support is available for Red Cross and Red Crescent emergency response. The DREF is a vital part of the International Federation's disaster response system and increases the ability of National Societies to respond to disasters.

**CHF 244,001 (USD 251,392 or EUR 179,386) has been allocated from the Federation's Disaster Relief Emergency Fund (DREF) to support the Togolese Red Cross in delivering immediate assistance to some 1,500 families and replenish the National Society's relief stock. Unearmarked funds to repay DREF are encouraged.**

**Summary:** The heavy downpour during the week of 11 to 17 October, 2010 has worsened the flooding situation that Togo has been experiencing since the beginning of the rainy season in June especially in the Maritime Region. This has been compounded with the overflowing of River Mono because of the excessive water flow from the bigger River Niger. The flooding has led to extensive damages to property including means of livelihood and houses with thousands of persons rendered homeless and sheltered temporarily in camps and with friends and relatives. The Red Cross through its emergency first-aid team members have been providing first-aid support to the affected people and in some cases assisting them in evacuation. After a preliminary assessment



Togolese Red Cross volunteers going for an assessment in the Maritime / TRCS

by Red Cross volunteers, there is the need to provide immediate relief assistance to the affected population. The Togolese Red Cross will be using the non-food items (NFIs) from its national prepositioned stock and relief items from ICRC to support some of the most affected families. In addition, the DREF allocation from the International Federation shall be used to fill the gap in the distribution of NFIs (blankets, sleeping mats, mosquito nets, kitchen sets, jerry cans, shelter kits, hygiene kits) and replenish the National Society' (NS) prepositioned stock. The NS continues to collaborate with other humanitarian actors and related government agencies to avoid duplication of tasks and increase quality of service to the affected population.

This operation is expected to be implemented over 3 months, and will therefore be completed by January, 2011; a Final Report will be made available three months after the end of the operation (by April, 2011).

[<click here for the DREF budget; here for contact details; here to view the map of the affected area>](#)

## The situation

The torrential rains of September and early October 2010 in West Africa and in Benin and Togo especially have caused the overflow of rivers and consequently causing floods in many parts of Togo, mainly in the South. The rainy season started in Togo in June and the downpour have been caused severe flooding in many parts of the country with a lot of humanitarian concerns. The Togolese Red Cross has been working in collaboration with UNICEF and other humanitarian agencies to assist the affected population, the floods have caused damages to bridges and roads mainly in the Maritime region of Togo. The Togolese Red Cross emergency first-aid team members deployed to the field have reported that 50 communities in four prefectures were mostly affected with one death, many injured and families displaced that are now sheltered in the three government temporary camps while some others have crossed over to neighbouring Benin Republic for shelter. The four most affected prefectures with devastating damages to property including houses are Yoto, Bas-Mono, Golfe and Lacs all in the Maritime Region. The Togolese Red Cross after a preliminary assessment has registered 5,910 families affected by the floods in this region; most of them are peasants who lost their houses and means of livelihood to the disaster.

## Coordination and partnerships

Humanitarian actors including the Togolese Red Cross have been collaborating to assist the affected population. The coordination team comprising of UNICEF, WHO, UNHCR, WFP, UNFPA, FAO, OCDI, PLAN-TOGO and the Swiss Red Cross is working closely with the Ministries of Health, Social Affairs and Civil Protection to avoid duplication of tasks during the operation. At NS headquarters, field coordination is ensured by the DM department. In-country PNS and ICRC are working in close collaboration with the NS based on the ORSEC plan.

The Togolese Red Cross had worked with UNICEF in assisting people affected by floods in June 2010. The Red Cross through its network of volunteers mobilized and deployed in the field assisted in the distribution of relief items provided by UNICEF to the affected population during that period.

## Red Cross and Red Crescent action

When the first flooding occurred the Togolese Red Cross commenced implement its flood contingency plan by deploying its volunteers in the affected communities. The volunteers provided first-aid support and evacuation to the affected population and they also carried out registration of persons most affected after a preliminary assessment was conducted to know the extent of damage and the immediate needs of the affected people.

Hundreds of Red Cross volunteers have been mobilized to support a sensitization and hygiene promotion campaign and the National Society had a prepositioned stock of non-food items for 250 households that were distributed in the aftermath of the disaster. With the request granted the Togolese Red Cross will be filling the gap of its assistance and also replenish its emergency prepositioned stock.

ICRC prepositioned the same items for 1,000 families that will be distributed to some of the identified and selected most vulnerable affected households.

## The needs

**Immediate needs:** With many of the affected people abandoning their houses and temporarily sheltered in camps, and with friends and relatives, they are in dire need of blankets, tarpaulins, mats, insecticide treated bed nets and disinfectant at the camps. As their main sources of potable water are contaminated by flood water, there is the need to prevent outbreak of water borne diseases by providing the affected population with safe water through provision of aqua tabs for the treatment of water. In some of the affected communities, there will be the need for complete rehabilitation or reconstruction of their water points. The situation in the affected communities is exposing community dwellers to epidemics such as cholera and malaria. There is need to scale-up

epidemiological surveillance and good health and hygiene sensitization amongst the affected people.

The NS will also be discussing with WFP on the need to cover the food items as many of the victims have lost their means of livelihood to the floods and are in need of food. The TRC intends to support some of the affected communities who are homeless in the reconstruction of their houses through provision of shelter kits.

The West Coast Regional Representation in Abuja, Nigeria will continue to work closely with the Togolese Red Cross by supporting its staff and volunteers in all Red Cross activities and ensuring that management and operational issues are directed and implemented within the principles and core values of the Red Cross Movement to meet the needs of the most vulnerable.

## The proposed operation

| <b>Relief distributions (food and basic non-food items)</b>   |   |
|---|---|
| <b>Objective: 1,500 most affected households identified and registered based on the assessment and criteria of the NS have received basic non-food items over a period of three months.</b> |   |
| <b>Expected results</b>   | <b>Activities planned</b>   |
| The TRC has procured and distributed basic relief items to 1,500 most affected households selected through established Red Cross selection criteria.  | <ul style="list-style-type: none"> <li>• Make contact and establish a relationship with local authorities in the affected communities;</li> <li>• Organize briefing for 60 Red Cross volunteers on targeting assessment and distribution strategies of the Red Cross;</li> <li>• Ensure the availability of reliable beneficiary data base for each targeted community;</li> <li>• Procure and distribute 3,000 blankets; 3,000 sleeping mats and 500 kitchen sets;</li> <li>• Monitor the emergency activities and produce reports on the distribution of relief items.</li> </ul> |
| <b>Objective: To replenish the NS contingency stock for 250 families.</b>   |   |
| <b>Expected results</b>   | <b>Activities planned</b>   |
| The contingency stock used from the NS's prepositioned stock for 250 families is replenished.   | <ul style="list-style-type: none"> <li>• Procure and stock NFIs of 500 blankets, 500 sleeping mats, 250 kitchen sets, 250 buckets, 250 jerry cans, 1,000 bars of soap and 500 mosquito nets.</li> </ul>   |
| <b>Emergency Shelter</b>  |   |
| <b>Objective: At least 500 most affected households are sheltered with dignity.</b>   |   |
| <b>Expected results</b>   | <b>Activities planned</b>   |
| Shelter kits have been distributed to 500 most affected households and support provided in the construction of temporary shelters.  | <ul style="list-style-type: none"> <li>• Mobilize and brief 20 Red Cross volunteers on assessment and emergency shelter strategy of the Red Cross;</li> <li>• Procure and distribute 500 shelter kits to the most affected households;</li> <li>• Construct emergency shelters.</li> </ul>  |
| <b>Emergency Health</b>   |   |
| <b>Objective: To contribute to the prevention of communicable diseases among 1,500 most vulnerable families.</b>  |   |

| <b>Expected results</b>   | <b>Activities planned</b>   |
|---|---|
| The risk of disease outbreak among the targeted population is reduced.  | <ul style="list-style-type: none"> <li>• Mobilization and briefing of 50 volunteers on health preventive measures on diarrheal cholera and other communicable diseases;</li> <li>• Provision of Information, Education and Communication (IEC) materials for health, water, sanitation and risk reduction sensitization activities.</li> <li>• Organization of health sensitization activities to the most affected communities.</li> </ul> |
| <b>Objective: To reduce the morbidity and mortality due to malaria among 1,500 flood affected families.</b>   |   |
| <b>Expected results</b>   | <b>Activities planned</b>   |
| 1,500 most floods affected are reached out by volunteers disseminating messages on malaria prevention and control and distribution of LLIN, usage, and assist in the correct hanging. | <ul style="list-style-type: none"> <li>• Procure and distribute 3,000 mosquito nets for 1,500 most affected families;</li> <li>• Procure nails and strings for mosquito nets hang-up campaign for 1,500 affected families.</li> <li>• Disseminate key messages concerning LLIN use and malaria (prioritizing pregnant women and households with children under 5);</li> </ul>   |

### **Water, Sanitation, and Hygiene Promotion**

| <b>Objective: To reduce the risk of waterborne diseases through provision of drinking water, health education and sensitization on good hygiene practices to the flood affected communities</b> |  |
|---|--|
| <b>Expected results</b>   | <b>Activities planned</b>  |
| 1,500 most affected households in the flood affected communities have access to safe drinking water, hygiene and sanitation facilities.   | <ul style="list-style-type: none"> <li>• Strengthen the capacity of 50 volunteers in water treatment and use of water treatment tablets and hygiene promotion;</li> <li>• Procure and distribute 75,000 water treatment tablets and sensitize on their use and 3,000 pieces of water jerry cans for 1,500 most affected households;</li> <li>• Procure and distribute 7,500 bars of soap to 1,500 most affected households;</li> <li>• Sensitize the population on good hygiene and sanitation practices and conduct a clean up campaign and disinfecting of water wells in the target communities.</li> </ul> |

### **Communications – Advocacy and Public information**

The IFRC West Coast Regional Representation shall continue to work closely with the Togolese Red Cross in profiling its activities during the operation and contribute in enhancing the visibility of the Red Cross within and outside Togo.

## How we work

All IFRC assistance seeks to adhere to the [Code of Conduct for the International Red Cross and Red Crescent Movement and Non-Governmental Organizations \(NGO's\) in Disaster Relief](#) and the [Humanitarian Charter and Minimum Standards in Disaster Response \(Sphere\)](#) in delivering assistance to the most vulnerable.

The IFRC's vision is to inspire, encourage, facilitate and promote at all times all forms of humanitarian activities by National Societies, with a view to preventing and alleviating human suffering, and thereby contributing to the maintenance and promotion of human dignity and peace in the world.

The IFRC's work is guided by [Strategy 2020](#) which puts forward three strategic aims:

1. Save lives, protect livelihoods, and strengthen recovery from disaster and crises.
2. Enable healthy and safe living.
3. Promote social inclusion and a culture of non-violence and peace.

## Contact information

For further information specifically related to this operation please contact:

- In **Togo**: Remy Afoutou, Secretary General, Togolese Red Cross; phone: +229 9165691; email: [remyaf@yahoo.fr](mailto:remyaf@yahoo.fr);
- In **Nigeria**: Thierry Coppens, Regional Representative, Abuja, Phone: +234.9.870.3924; email: [thierry.coppens@ifrc.org](mailto:thierry.coppens@ifrc.org); Jerry Niati, Regional Disaster Management Manager, Abuja, phone: +234.703.414.2708; email: [niati.jerry@ifrc.org](mailto:niati.jerry@ifrc.org);
- In **Southern Africa**: Dr Asha Mohammed, Head of Operations, Johannesburg, email: [asha.mohammed@ifrc.org](mailto:asha.mohammed@ifrc.org), Phone: +27.11.303.9700, Fax: + 27.11.884.3809; +27.11.884.0230
- In **Geneva**: Christine South, Acting Operations Coordinator for Africa; phone: +41 22 730 4529 (direct) Mobile: +41 79 308 98 24; Fax: +41 22 733 03 95; email: [christine.south@ifrc.org](mailto:christine.south@ifrc.org);

[<DREF budget and map below; click here to return to the title page>](#)

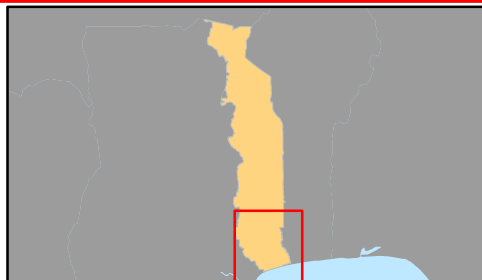
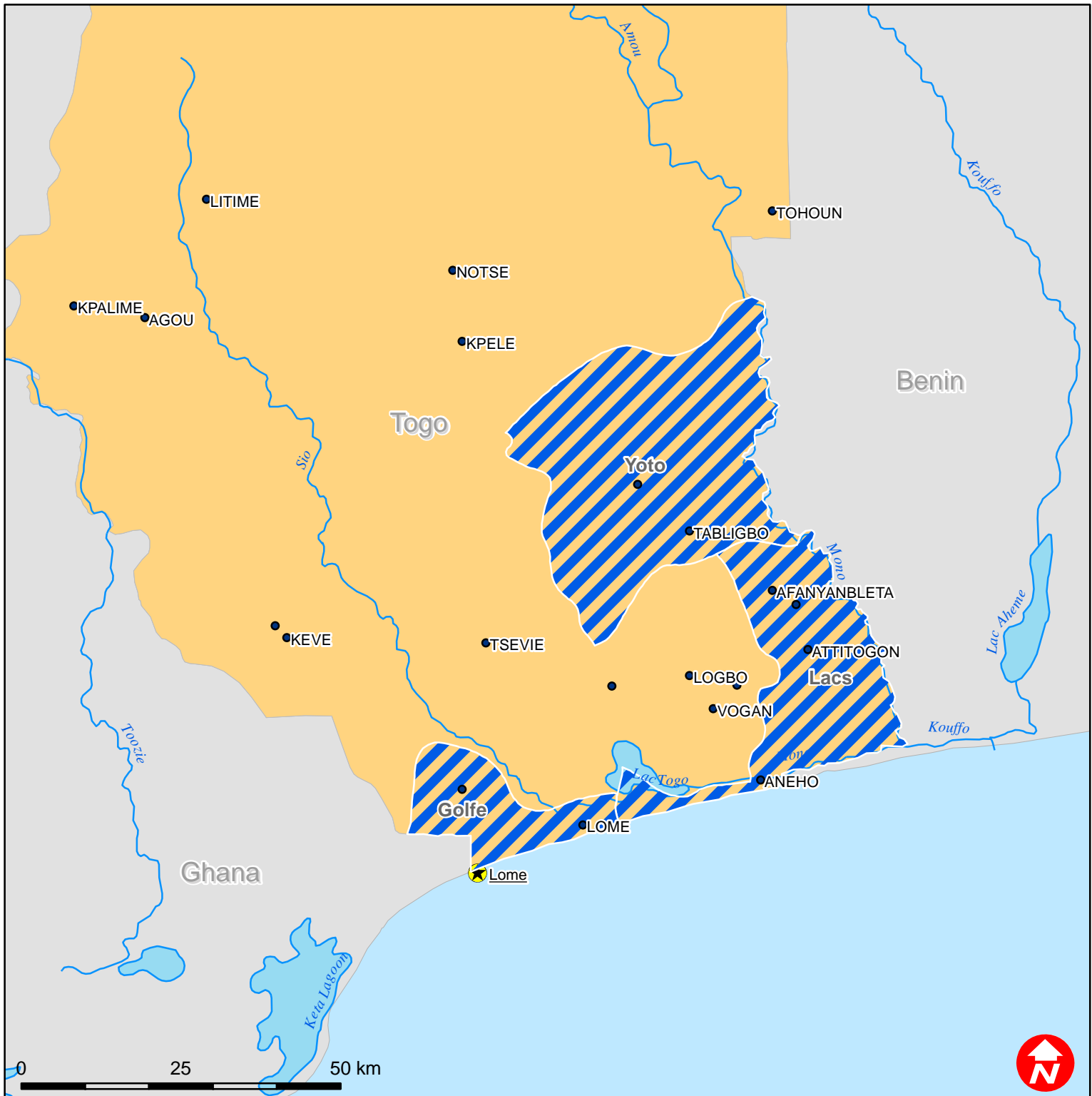
**BUDGET SUMMARY**

| Budget Group                                   | DREF Grant Budget | TOTAL BUDGET CHF |
|--|-------------------|------------------|
| Shelter - Relief                               | 39,115            | 39,115           |
| Shelter - Transitional                         | 0                 | 0                |
| Construction - Housing                         | 0                 | 0                |
| Construction - Facilities / Infrastructure     | 0                 | 0                |
| Construction - Materials                       | 5,000             | 5,000            |
| Clothing & Textiles                            | 46,000            | 46,000           |
| Food   | 0                 | 0                |
| Seeds & Plants                                 | 0                 | 0                |
| Water & Sanitation                             | 12,250            | 12,250           |
| Medical & First Aid                            | 0                 | 0                |
| Teaching Materials                             | 0                 | 0                |
| Utensils & Tools                               | 56,565            | 56,565           |
| Other Supplies & Services & Cash Disbursements | 0                 | 0                |
| <b>Total Supplies</b>                          | <b>158,930</b>    | <b>158,930</b>   |
| Land & Buildings                               | 0                 | 0                |
| Vehicles                                       | 2,436             | 2,436            |
| Computer & Telecom                             | 0                 | 0                |
| Office/Household Furniture & Equipment         | 0                 | 0                |
| Medical Equipment                              | 0                 | 0                |
| Other Machinery & Equipment                    | 0                 | 0                |
| <b>Total Land, vehicles &amp; equipment</b>    | <b>2,436</b>      | <b>2,436</b>     |
| Storage  | 612               | 612              |
| Distribution & Monitoring                      | 624               | 624              |
| Transport & Vehicle Costs                      | 19,250            | 19,250           |
| <b>Total Transport &amp; Storage</b>           | <b>20,486</b>     | <b>20,486</b>    |
| International Staff                            | 0                 | 0                |
| Regionally Deployed Staff                      | 0                 | 0                |
| National Staff                                 | 0                 | 0                |
| National Society Staff                         | 35,035            | 35,035           |
| Other Staff benefits                           | 0                 | 0                |
| Consultants                                    | 0                 | 0                |
| <b>Total Personnel</b>                         | <b>35,035</b>     | <b>35,035</b>    |
| Workshops & Training                           | 1,450             | 1,450            |
| <b>Total Workshops &amp; Training</b>          | <b>1,450</b>      | <b>1,450</b>     |
| Travel   | 0                 | 0                |
| Information & Public Relation                  | 0                 | 0                |
| Office Costs                                   | 1,650             | 1,650            |

|  |                |                |
|--|----------------|----------------|
| Communications                             | 2,422          | 2,422          |
| Professional Fees                          | 0              | 0              |
| Financial Charges                          | 0              | 0              |
| Other General Expenses                     | 4,000          | 4,000          |
| <b>Total General Expenditure</b>           | <b>8,072</b>   | <b>8,072</b>   |
| Cash Transfers to National Societies       | 200            | 200            |
| Cash Transfers to 3rd parties              | 2,500          | 2,500          |
| <b>Total Contributions &amp; Transfers</b> | <b>2,700</b>   | <b>2,700</b>   |
| Program Support                            | 14,892         | 14,892         |
| <b>Total Programme Support</b>             | <b>14,892</b>  | <b>14,892</b>  |
| Services & Recoveries                      |                | 0              |
| Shared Services                            |                | 0              |
| <b>Total Services</b>                      | <b>0</b>       | <b>0</b>       |
| <b>TOTAL BUDGET</b>                        | <b>244,001</b> | <b>244,001</b> |



# Togo: Floods



 Affected prefectures