

www.ifrc.org  
Saving lives,  
changing minds.

## Emergency appeal Bangladesh: Monsoon Floods

 International Federation  
of Red Cross and Red Crescent Societies

**Emergency appeal n° MDRBD009**  
**GLIDE n° FL-2011-000093-BGD**  
**26 August 2011**

This Emergency Appeal seeks CHF 1,267,094 in cash, kind, or services to support the Bangladesh Red Crescent Society (BDRCS) to assist 10,000 families (50,000 beneficiaries) for eight months, and will be completed by the end of April 2012. A Final Report will be made available by July 2012.

CHF 262,770 was allocated from the International Federation of Red Cross and Red Crescent Societies (IFRC) Disaster Relief Emergency Fund (DREF) to support this operation in Cox's Bazar.

Since mid-August excessive rains in many of the low-lying areas in districts such as Satkhira and Jessore has led to displacement of over 50,000 families. People are forced to seek shelter on the road side and raised ground. The overflowing water from the local river Kobodac in Jessore has added to the misery of people who will be trapped for an estimated two to three months and affected by the waterlogged conditions.



Women of Magura village in Satkhira district rushing to temporary shelters. **Photo:** BDRCS Satkhira unit.

Continuous torrential rain coupled with a monsoonal depression since July in the Bay of Bengal has affected a total of more than 700,000 people in the south-central and south west districts of Bangladesh, affecting at least 18 of the 64 districts. Cox's Bazar district was the first to be affected with severe flash flooding reported as a result of heavy rainfall and the increased tidal surge. Around 300,000 people were reported to be marooned. The districts of Satkhira and Jessore were severely affected. BDRCS quickly swung into action both in Cox's Bazar and in Satkhira and Jessore. BDRCS volunteers assisted the authorities in the safe evacuation of people and also provided some assistance through cooked food delivery and clothes distribution. BDRCS, through the IFRC DREF mechanism, initiated an operation in Cox's Bazar where it delivered emergency food and cash to 1,000 families and non-food items (tarpaulins, hygiene parcel, jerry cans) and standard family ration packs for 5,000 families.

Based on the urgent needs assessed on the flooding situation, this Emergency Appeal responds to a request from BDRCS, and focuses on providing support to 10,000 families (50,000 beneficiaries) to take an appropriate and timely response in delivering assistance and relief in food, emergency shelter, health, water, sanitation and hygiene (WatSan/HP) and livelihoods (through cash transfer).

The situation in south-western Bangladesh is evolving and likely to change as the country is experiencing a significant amount of rainfall almost every day. The BDRCS and the IFRC country office continue to monitor the situation, and may update the latest needs and plans as the flooding evolves.

[<click here to view the attached Emergency Appeal Budget; here to link to a map of the affected area; or here to view contact details>](#)

## The situation

The flood season arrived late in Bangladesh this year, and in mid-August, excessive downpour in many of the low-lying areas in districts like Satkhira and Jessore has led to displacement of over 50,000 families, who have to live on the road side and raised ground. The water overflows from the local river Kobodac in Jessore added misery to the suffering of people who will be trapped and affected in the water logging for an estimated two to three months. Moreover, a considerable number of districts in Bangladesh were reported to be flooded during the second and third weeks of July with Cox's Bazar district being the worst affected. Seasonal floods were compounded by factors such as heavier rainfall, increase of tidal water level due to depression in the Bay of Bengal, and overflow of water from areas upstream (the hills of India and Myanmar). Around 300,000 people in Cox's Bazar district were reported to be marooned as the flood situation deteriorated. Many people were moved to cyclone shelters and school buildings while some sought refuge on the main roads along with families and livestock as rainwater entered into their houses. To date, ten lives have been lost due to the floods in Cox's Bazar.



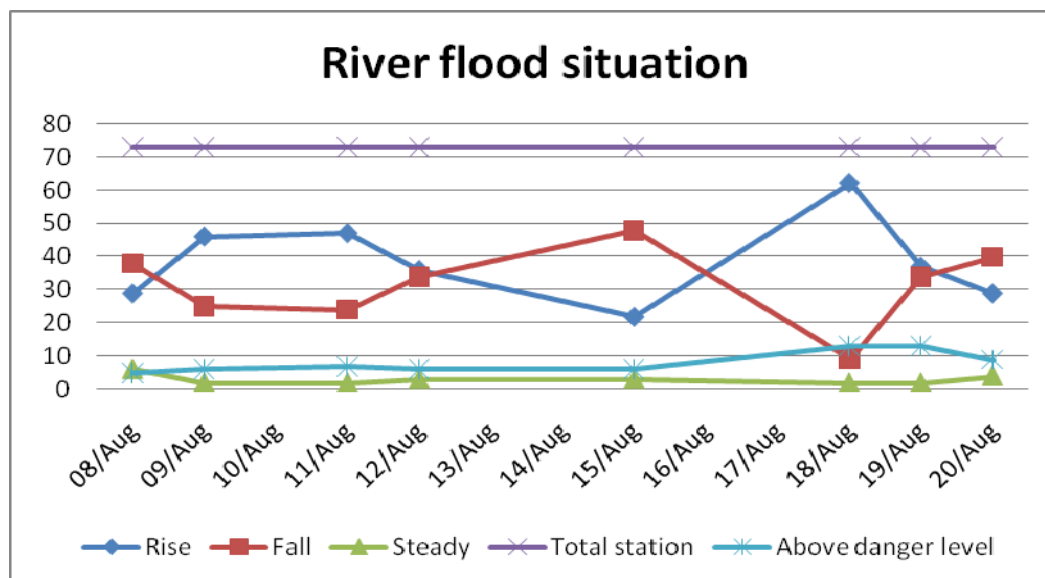
Flood affected people took refuge on a road in Tala, Satkhira. **Photo:** IFRC.

Following the flash floods during the third week of July in Cox's Bazar, Bangladesh is experiencing torrential rains coupled with monsoon depression in the Bay of Bengal. According to sources from the Bangladesh Red Crescent Society (BDRCS) district unit and local administration, the coastal and hilly areas of the Brahmaputra and Ganges basin districts are the worst affected with approximately 400,000 people taking refuge in temporary shelters or safer places. Significant reports of damage to people's lives, livelihood, income, crops and food security has been coming in from BDRCS and non-governmental organisations. According to the situation report of the Ministry of Food and Disaster Management (MoFDM) dated 18 August, monsoon floods have affected over 313,000 families (approximately 1.56 million individuals) in the south-western, northern, southern, south eastern, north-eastern and central districts of Satkhira, Jessore, Narail, Bagerhat, Chuadanga, Kustia, Bogra, Sirajganj, Pabna, Lalmonirhat, Thakurgaon, Kurigram, Sherpur, Netrokona, Cox's Bazar, Bandarban, Rajbari and Manikganj. Unlike the monsoon rain-induced flood across the country, the situation in Satkhira and Jessore is expected to be prolonged as these areas have ongoing problems with water logging.

According to the initial and ongoing assessments of BDRCS/IFRC, including consultation with local administration office and from field visits, the flood situation has made more than 80,000 people homeless in temporary shelters in Tala, Kolaroa, Sadar upazila of Satkhira, Keshobpur, Monirampur and Abhaynagar upazila of Jessore district. BDRCS Cox's Bazar unit reported that although the flash flood occurred in mid-July, there was significant damage to people's livelihoods, houses and crops. The assessment team also reported an increase in the number of cases of skin disease, respiratory infections, anaemia and diarrhoea. The team is reporting that neighbouring districts in the south-west (including Khulna district) are receiving heavy rainfall and may experience potential flooding.

The heavy downpour induced by the monsoon depression in the Bay of Bengal has already surpassed the average monthly rainfall in Satkhira. The cumulative rainfall in Satkhira up to 9 August has been 413.8 mm against the normal monthly (August) average of 332.1 mm. A similar trend is also being observed in Khulna and Jessore districts. On 9 August, the Flood Forecasting and Warning Centre (FFWC) reported that the Kobadak River water level has risen by 9 cm over the last 24 hours and was flowing at 12 cm over the danger level at the Jhikargacha monitoring station in Jessore District. On 13 August, a national daily newspaper (*Janakantha*), referring to the FFWC, reported that 84 mm of rainfall was recorded in six hours (6 am to 12 pm) which is unusual and indicative of a changing rainfall pattern.

According to the FFWC source (BWDB – [www.ffwc.gov.bd](http://www.ffwc.gov.bd); data date: 18 August), the flood situation in Munshiganj, Madaripur, Faridpur Jessor, Satkhira, Kustia, Tongi, Sunamganj, Sylhet, Netrokona and Sherpur was highlighted. Forecasts, as of mid-August, indicated that the Brahmaputra-Jamuna, the Ganges-Padma and the Meghna river systems are likely to rise. In addition, it is expected that the rivers around Dhaka are also likely to rise in the coming week. More recent reports note that the Brahmaputra-Jamuna and the Ganges-Padma have a falling trend while Meghna is in the rising trend.



According to FFWC, many rivers in the country were flowing well above the danger level mark from mid-July. (Vertical axis indicates number of flood monitoring stations)

According to the local administration and assessment of BDRCS and other humanitarian agencies (Solidarities, Muslim Aid, Concern Worldwide, Christian Aid, Dan Church Aid, Save the Children, and Islamic Relief) and *Uttaran*, a local non-governmental organization based in Satkhira, 190,087 families or around 1 million people, including 213,710 children, were severely affected and homeless due to the floods. As of 10 August, around 52,657 people have reportedly taken temporary shelters in schools, on roadsides or embankments. A large number of people, including women and children, are living in makeshift shanties or under open sky without basic food, drinking water and sanitation facilities. The rains have seriously constrained livelihood activities, particularly daily wage earners, and the impact on income has led to the reduction in the number of family meals consumed or in some cases, no food at all.



A vulnerable woman in Magura village, Satkhira Sadar, Satkhira district waiting to go a safer place. **Photo:** BDRCS Satkhira unit.

Around 20,000 houses collapsed completely in 548 villages of seven *upazila* (sub-districts) in Satkhira and Jessore districts which need external assistance to repair/rebuild. Poor farmers/share croppers have lost their investment in crops as over 66,000 acres of standing crops have been partially or fully damaged by floods which will impact on people's food security condition in the long run. Flood and excessive rain have either partially or fully destroyed over 7,000 water points of these villages, and has adversely affected access to safe drinking water and would lead to an increase in waterborne diseases. Floods have breached 100 km of embankment which had held back the flood waters from people's homesteads and crop lands. With these destroyed, water is likely to remain in the crop land for longer periods until irrigation canals can be unblocked. Livelihood assets in the form of poultry and livestock have been lost, with households reporting a loss of over

850,000 animals. In the flash flood in Cox's Bazar, around 12,000 families were severely affected, around 4,000 houses were completely destroyed, and 240 acres of crops were damaged.

Some districts of West Bengal in India, bordering Bangladesh are experiencing floods, which will in turn affect the south western districts, including Satkhira and Jessore. The same south-western region, although not flood prone, experienced similar flooding in 2000 due to the sudden onrush of water from bordering districts of West Bengal. The table reflects detailed flood damage figures:

District	Upazila	No. of affected unions	No. of affected villages	No. of most affected families	No. of houses fully destroyed	Crops damaged(acres) fully	No. of water points damaged	No. of IDP/people in shelter	No. affected livestock and poultry	Damaged embankment
										fully and partially(KM)
Satkhira	Tala	12	217	58,612	7,050	5,990	3,645	25,667	43,615	10
	Debhata	5	0	25,000	50	195	85	107	9,255	6.5
	Kalaroa	13	116	21,259	3,852	32,000	1,104	18,473	627,196	72
	Sadar	14	70	40,125	3609	395	526	1,975	143,382	-
	Municipality	1	6	22,000	375	1,600	-	-	-	-
<b>Total</b>	<b>5</b>	<b>45</b>	<b>409</b>	<b>166,996</b>	<b>14936</b>	<b>40,180</b>	<b>5,360</b>	<b>46,222</b>	<b>823,448</b>	<b>88.5</b>
Jessore	Monirampur	4	61	10,154	2104	10,515	428	2,011	14,640	5
	Keshobpur	3	78	12,937	2542	15,309	917	4,424	19,829	7
<b>Total</b>	<b>2</b>	<b>7</b>	<b>139</b>	<b>23,091</b>	<b>4646</b>	<b>25,824</b>	<b>1,345</b>	<b>6,435</b>	<b>34,469</b>	<b>12</b>
Cox's Bazar	Shadar	10	163	2,880	1193	20		0	2,200	47
	Ramu	11	101	8,298	1930	37		0	1,330	0.77
	Chokoria	18	335	0	102	183		0		10.5
	Moheshkhali	9	180	550	82	0		0		8
	Ukhia	5	54	185	110	0		0		1
	Teknaf	6	131	0	480	0		0	100	
<b>Total</b>	<b>6</b>	<b>59</b>	<b>964</b>	<b>11,913</b>	<b>3,897</b>	<b>240</b>	<b>0</b>	<b>0</b>	<b>3,630</b>	<b>67.27</b>
<b>Grand total</b>	<b>14</b>	<b>111</b>	<b>1,512</b>	<b>202,000</b>	<b>23,479</b>	<b>66,244</b>	<b>6,705</b>	<b>52,657</b>	<b>861,547</b>	<b>167.77</b>

Source: Sitrep of MoFDM (Ministry of Food and Disaster Management), and assessment of BDRCS and other agencies from mid-July to mid-August 2011.

The flood has led to miserable living conditions for the affected people, especially those living under the poverty line, with a dramatic impact on livelihoods, daily coping mechanisms, and basic economic activities, leading to a sudden drop of income. A significant number of people are living in makeshift houses and are in need of assistance to rebuild their collapsed houses. Daily wage earners and labours, such as rickshaw/van pullers and agri-labourers, have not been able to work, and the most vulnerable persons (women, children and the elderly) are most severely impacted and at risk of potential waterborne disease. Household items, including cooking utensils and food stocks, were damaged adding to the misery of women already struggling to feed their families who are trying to continue to do so in very difficult conditions without cooking facilities. People who are internally displaced and living in temporary shelters do not have the basic water, sanitation and primary health care facilities and are living without their normal daily diet. Since the water logging situation in Satkhira and Jessore is likely to be prolonged, people need longer term assistance in livelihood and income generation to recover from the losses caused by flood. The government, through its local administration, has distributed rice, cash grants and house building grants among the affected people. According to governmental source (NDRCC; DMRD; MoFDM; data date: 20 August @1200), the government has distributed 6,350 MT rice, cash grants of BDT 8,800,000 (CHF 93,266) and house building grants of BDT 3,950,000 (CHF 41,864), out of which Satkhira, Jessore and Cox's Bazar have received 1,200 MT rice and BDT 1,300,000 (CHF 13,783), 200 MT rice and BDT 400,000 (CHF 4,241) and 650 MT rice and BDT 2,200,000 (CHF 23,330) respectively.

BDRCS Cox's Bazar, Satkhira and Jessore unit Red Cross youth volunteers have provided support in evacuation of people to safer places, such as schools and other public buildings BDRCS and IFRC had a discussion with United Nations High Commission for Refugees (UNHCR) who has a big refugee programme in the Cox's Bazar area. UNHCR has contributed to BDRCS 2,000 plastic sheets and 1,500 jerry cans apart from some other non-food items to be distributed among the most affected families in Cox's Bazar. BDRCS Satkhira and Jessore units have mobilized resources and distributed cooked food among the people living in temporary shelter.

While the government responded swiftly, the response is undoubtedly inadequate in terms of covering the needs of such a large number of affected people.

## Coordination and partnerships

Coordination between ECHO and its partners and BDRCS has been established in terms of exploring support for humanitarian assistance to the flood affected vulnerable population. Discussions were held between BDRCS/IFRC and Cox's Bazar district administration in targeting geographic locations. In addition, BDRCS Cox's Bazar unit have been maintaining contact with district administration for identifying remote locations/pockets which remain uncovered by the government or other organizations for possible BDRCS intervention. Coordination has also been made with UNHCR in Cox's Bazar which is interested to provide some non-food items to BDRCS for distribution among affected families.

The affected BDRCS district units (Satkhira and Jessore) have established coordination and initially collected secondary information about the possible damage and immediate needs from the local administration. Based on the available information from local disaster management committee meeting of which BDRCS is a key member, BDRCS units have requested assistance from the national headquarters. Within the Red Cross Red Crescent Movement responses, discussions were held between BDRCS and partner national societies to explore possible support for assistance. BDRCS national headquarters has been communicating with the Bangladesh Meteorological Department (BMD) and FFWC to monitor the weather situation. In addition, BDRCS has been gathering situation updates from different agencies including Disaster Management Information Centre (DMIC) of the Ministry of Food and Disaster Management (MoFDM), the Network for Information, Response and Preparedness Activities on Disaster (NIRAPAD). Since BDRCS/IFRC are active members of the Disaster Emergency Response (DER) group, information and operation updates will be shared with other humanitarian agencies and the national government in order to avoid any overlapping of distribution.

IFRC organized a meeting with in-country Movement partners on 17 August to review the flood situation and explore support for BDRCS in a potential response to affected populations. BDRCS/IFRC is also coordinating with non-governmental organizations regarding their plan to respond the needs. Apart from the government response, several humanitarian agencies, including international non-governmental organizations such as Action Aid, Christian Aid, Muslim Aid and Oxfam, are likely to respond with emergency food and non-food items, emergency shelter and Watsan support.

ECHO has sent an assessment mission in the south-west water-logged areas and is likely to derive their emergency response support for the flood hit areas in both the south-east (Cox's Bazar district) and the south-west water-logged areas.

## Red Cross and Red Crescent action

BDRCS and IFRC have been closely monitoring the situation. The BDRCS response department conducted an assessment on the situation through its branch offices located in Cox's Bazar, Satkhira and Jessore district. Cox's Bazar district unit volunteers took part in the rescue operation together with government agencies and have also distributed some clothes to affected families. The BDRCS Satkhira local unit has mobilized resources and distributed cooked food among the people living in temporary places. Red Cross volunteers of Satkhira and Jessore districts provided support in the evacuation of people to safer places. The BDRCS local units are coordinating with local authorities in terms of exchanging information on the damage and needs of the affected population and the response by the government.



BDRCS Satkhira unit distributing cooked food among vulnerable people. **Photo:** BDRCS Satkhira unit.

BDRCS/IFRC is in communication with traditional partners, including ECHO, for possible support. BDRCS and IFRC have reviewed the stocks of non-food items available for dispatch to the affected areas. Stocks of jerry cans and tarpaulins have already been despatched, ex the IFRC regional warehouse in Malaysia. The fleet and national disaster response team (NDRT) are being utilized in ongoing response operation of BDRCS units in Cox's Bazar, Satkhira and Jessore.

On 8-16 August BDRCS national headquarters, together with the most affected units of Satkhira, Jessore and Cox's Bazar district, has conducted a detailed assessment to gather first hand information about damage caused to people's lives, livelihood and properties. The assessment team has been in regular contact with the headquarters response team to help develop situation reports for further action. Concurrently, a joint assessment for longer term needs comprising BDRCS/IFRC, World Food Programme (WFP) and Muslim Aid has been conducted in Cox's Bazar.

Responding to the Cox's Bazar flash flood in July, IFRC together with BDRCS, had launched a DREF operation in Cox's Bazar to initially assist 5,000 families with non-food items (emergency shelter materials, jerry cans) and hygiene parcels; 1,000 families with emergency food and cash; and in the second phase, all 5,000 families with BDRCS standard package of supplementary food. The supplementary food distribution began on 23 August and is expected to be completed by end of August.

BDRCS also plans to respond to other affected districts/ pockets where the scale of damage also requires external assistance for vulnerable people coping with the impact of floods. BDRCS has requested its in-country partners to explore resources within the Movement under the purview of their pre-disaster agreement. BDRCS management is also planning to launch a national appeal to raise funds to assist people in other affected areas.

### The needs

Based on the situation described above, people require both longer-term emergency assistance as well as immediate support in areas of flash floods, particularly as water levels recede. As reflected in the BDRCS/IFRC assessment most of the houses collapsed and will require early recovery/ recovery support, including repairing or re-building of houses.

Below is a summary of assessment findings in Cox's Bazar and Satkhira and Jessore with the various types of planned responses.

#### A. Cox's Bazar

##### Immediate needs

- Emergency food ration for most affected families or temporary displaced people.
- Emergency shelter.
- Emergency water supply.

- Cash for purchasing essential items.

#### **Short term needs**

- Supplementary food package.
- Hygiene promotion.

#### **Early recovery/recovery needs**

BDRCS/IFRC is coordinating with humanitarian agencies including ACF, Muslim Aid and Solidarities to carry out a joint assessment in exploring any further needs in form of food security, livelihood, shelter and WatSan of affected population.

### **B. Satkhira-Jessore**

#### **Immediate needs**

**People living in temporary shelters:** As of 10 August in Satkhira district, people staying in some 68 temporary shelters are living without basic food staples and clean drinking water and in unhygienic condition. They need dry/cooked food, drinking water and improved emergency sanitation facilities including hygiene parcel. They also need clothing as most of them – particularly women – cannot afford a spare set. Due to the proliferation of mosquito and other type of insects, the risk of malaria and dengue is high. There is a need for mobile medical team to treat diarrhoeal and other related diseases.

**People living on road side/raised ground:** People living in makeshift houses made with materials from collapsed structure, leaves and some rain proof materials need emergency shelter to protect them from rain and maintain minimum privacy of women and adolescent girls. They need food staples and cooking utensils to survive until they are able to go back home or safer places. Women and children need clothing to withstand cold and windy weather. As the sanitation system is broken, they also need hygiene parcel to maintain hygiene practice. Unlike people living in temporary shelter, risk of malaria and dengue is higher for people living in under open ground, who would need mosquito net and vector control.

**People marooned in their own houses:** People who are living in their inundated houses need staple items (household goods and food), clothing and cooking stove. In some villages households have erected platforms inside their houses to live above water levels. They are also curtailing meals as food stocks become depleted.

#### **Short-term needs**

**Food & Non-Food Items:** Vulnerable people seek supplementary food (staples) and non food items like household items (i.e. cooking utensils, movable stove, lantern, etc.), clothing, mosquito net, etc. Access to basic food is limited as people's income generation has been curtailed, hence they are forced to reduce their daily food intake. Women (especially lactating and pregnant mothers), children and the elderly are those most impacted. Since people cannot cook on traditional stoves due to the rain and humid condition and scarcity of fuel, women are facing difficulties and therefore require cooking utensils and movable stoves.

**Shelter:** In the affected locations, people traditionally live in mud-built hatchet houses which are easily eroded away with water. Flood and heavy rain caused the collapse of houses of vulnerable people who need shelter materials to rebuild their houses. People need to be provided with emergency shelter materials, core shelter and cash grant support.

**Water Sanitation and Hygiene (WatSan):** People, mostly women, who have suddenly been made homeless, are facing serious problems accessing safe water and sanitation facilities. Normal hygiene practices are compromised. Over 7,000 water points collapsed and people living in temporary shelters/places do not have access to sanitation facilities. There is need for clean drinking water and sanitation facilities.

**Early recovery/recovery needs:** Rapid assessment indicates early recovery/recovery needs in the form of livelihood tools and capital support for vulnerable people to recover from losses caused to crops and traditional livelihood/income. As per the ongoing assessment, people need assistance to recover from the losses as their seed bed, growing crops and shrimp farms were damaged by floods affecting daily income of agri labours, daily wage earners, and small business people.

## The proposed operation

The operation supports the most urgent needs of affected people in form of emergency relief (emergency food-cooked/dry food, sari and lungi), shelter (emergency shelter materials-tarpaulin), emergency health and WatSan/HP (distribution of safe drinking water, water purification tablet (WPT), oral rehydration solution (ORS), hygiene promotion), latrines, and livelihood/income generation/shelter through cash grant for early recovery.

The activities to be undertaken in Cox's Bazar will be completed by 30 August. The first phase of activities in Satkhira/Jessore are expected to be completed by October and the second phase to be completed by 31 December. The table below charts the phased approach of both Cox's Bazar and Satkhira/Jessore areas. Two months will be utilized to carry out an impact assessment of the livelihood cash grant component and a lesson-learned workshop will also be organized after the evaluation of the operation in April 2012. Stocks utilized will also be replenished during this period.

The tables below show the phased approach of the operation and the area-wise beneficiary family numbers.

District	Phase	Intervention	No. of Families
Cox's Bazar	1 <sup>st</sup> phase	NFI and shelter (1 piece tarpaulin and 2 pieces jerry can/family). Hygiene parcel (1 standard box of 1 piece bathing soap, 1 piece laundry soap, washing powder ½ kg /family)	5,000
		Emergency food (5 kg rice, 3 kg dhal, 2 litres edible oil, 1kg sugar, ½ kg shuji) plus BDT 500 cash.	1,000
	2 <sup>nd</sup> phase	Standard supplementary food (20 kg rice, 5kg dhal, 2 litres edible oil, 1 kg salt).	5,000
Satkhira and Jessore	1 <sup>st</sup> phase	Emergency food (cooked food/dry food) for 5 days. NFI and shelter (1 piece sari and 1 piece lungi and 1 piece tarpaulin). Supplementary food (20 kg rice, 5kg dal, 2 litres edible oil, 1 kg salt). Rationing water, WPT, ORS, standard hygiene parcel (laundry, bathing soap, washing powder, coconut oil, comb, towel, etc).	5,000
	2 <sup>nd</sup> phase	Livelihood/income generation/shelter through cash grant of BDT 10,000 or BDT 5,000/family depending on needs. WatSan (sanitary latrines) 1 set/family.	5,000

Table: Proposed district wise beneficiary families breakdown under BDRCS response

District	Upazila	No. of Families
Cox's Bazar	Chokoria	1,400
	Teknaf	500
	Ukhia	300
	Sadar	1,200
	Ramu	1,600
Satkhira	Tala	2,000
	Sadar	1,000
	Koloroa	500
Jessore	Keshobpur	1,000
	Monirampur	500
<b>Total</b>		<b>10,000</b>

### Relief distributions (food and basic non-food items)

<b>Outcome:</b> The risk of malnutrition and the adverse living conditions due to flood impact of 10,000 families or 50,000 people is reduced.	
Outputs (expected results)	Activities planned
5,000 families of Cox's Bazar provided with basic NFIs (jerry cans).	<ul style="list-style-type: none"> <li>Conduct needs assessment.</li> <li>Identify, select and register appropriate beneficiary families as per vulnerability criteria.</li> </ul>
1,000 families of Cox's Bazar	<ul style="list-style-type: none"> <li>Procurement of items following BDRCS/ IFRC standard</li> </ul>

<p>provided with emergency food and cash.</p> <p>5,000 families of Satkhira and Jessore provided with NFIs (sari and lungi).</p> <p>10,000 families of Cox's Bazar, Satkhira and Jessore provided with supplementary food.</p>	<p>procedures.</p> <ul style="list-style-type: none"> <li>• Distribute items as per the plan of action developed by the respective BDRCS units.</li> <li>• Dissemination about the relief package among target beneficiaries.</li> <li>• Documentation for record or audit trial.</li> <li>• Monitor and evaluate the relief activities and provide reporting on relief distributions.</li> </ul>
--	---

### Emergency shelter

<p><b>Outcome:</b> Improved living condition of 10,000 families (50,000 individuals) in temporary places or makeshift shelters protected from rain, bad weather and with privacy of people particularly women through provision of emergency shelter materials.</p>	
Outputs (expected results)	Activities planned
<p>10,000 families of Cox's Bazar, Satkhira and Jessore provided with emergency shelter materials (tarpaulins).</p>	<ul style="list-style-type: none"> <li>• Conduct needs assessments.</li> <li>• Identify, select and register appropriate beneficiary families as per vulnerability criteria.</li> <li>• Procurement of tarpaulins through KL Regional Logistics Unit pre-positioned stocks in Malaysia following IFRC standards.</li> <li>• Distribute items as per the plan of action developed by the respective BDRCS units.</li> <li>• Training of volunteers to sensitise the use of and fixing tarpaulins.</li> <li>• Assist beneficiary families to build emergency shelters using tarpaulins by BDRCS unit volunteers.</li> <li>• Documentation for record or audit trial.</li> <li>• Monitor and evaluate the relief activities and provide reporting on relief distributions.</li> </ul>

### Water & Sanitation and Hygiene promotion

<p><b>Outcome:</b> The risk of water and sanitation related diseases have been reduced through the provision of safe water, appropriate sanitation as well as hygiene promotion to up 10,000 families (50,000 individuals).</p>	
Outputs (expected results)	Activities planned
<p>10,000 families of Cox's Bazar, Satkhira and Jessore provided with hygiene parcel, ORS, WPT and hygiene promotion activities.</p>	<ul style="list-style-type: none"> <li>• Conduct assessment for primary health care needs in affected areas.</li> <li>• Identify, select and register appropriate beneficiary families as per vulnerability criteria.</li> <li>• Procurement of hygiene parcel, ORS, and WPT following IFRC/BDRCS and Sphere standards.</li> <li>• Distribute and demonstrate how to treat Water with WPT, and how to use ORS and the hygiene parcels.</li> <li>• Develop, print and disseminate IEC materials for hygiene education.</li> <li>• Implement activities as per the PoA developed by the respective BDRCS units.</li> <li>• Maintain coordination/liaison with local civil surgeon office or other health/WatSan intervention agencies.</li> <li>• Documentation for record or audit trial.</li> <li>• Monitor and evaluate the use and feedback from hygiene promotion and WPT at household level.</li> <li>• Monitor and evaluate the WatSan/HP activities and provide reporting.</li> </ul>
<p>5,000 families of Satkhira and Jessore provided with safe drinking water and household and</p>	<ul style="list-style-type: none"> <li>• Conduct assessment for water, sanitation and hygiene needs in affected areas.</li> <li>• Identify, select and register appropriate beneficiary families as per vulnerability criteria.</li> <li>• Distribute safe drinking water/rationing among people at temporary shelters</li> </ul>

community sanitary latrines.	<p>by BDRCS unit volunteers.</p> <ul style="list-style-type: none"> <li>• Design latrine or following the Department of Public Health and Engineering (DPHE) model as appropriate to the local context.</li> <li>• Procurement of materials for 3,000 household latrines as per the IFRC procurement standards. These latrines will be constructed by householders.</li> <li>• Assist beneficiary families to build sanitary latrines by BDRCS unit volunteers.</li> <li>• Construction of five community latrines for temporary shelters that will add to existing facilities for 2,000 families living in these shelters.</li> <li>• Disseminate list of target beneficiaries with other actors to avoid duplication.</li> <li>• Maintain coordination with local administration and other agencies at the ground for avoiding duplication.</li> <li>• Monitor and evaluate the process of construction.</li> </ul>
------------------------------	---

### Health Care

**Outcome:** The risk of diarrhoeal, skin and respiratory diseases has been reduced through the provision of mobile medical teams for 25,000 people.

Outputs (expected results)	Activities planned
25,000 people of Satkhira and Jessore provided with medical treatment where needed.	<ul style="list-style-type: none"> <li>• Conduct assessment for emergency health care needs in affected areas.</li> <li>• Mobilization and deployment of eight mobile medical teams for two weeks.</li> <li>• Service delivery through medical teams.</li> <li>• Maintain records of cases and promoting for referrals.</li> <li>• Maintain coordination/liaison with local civil surgeon office or other health intervention agencies.</li> <li>• Documentation for record or audit trial.</li> <li>• Monitor and evaluate the use and feedback from hygiene promotion and WPT at household level.</li> <li>• Monitor and evaluate the WatSan/HP activities and provide reporting.</li> </ul>

### Livelihood/income generation/shelter through cash grant

**Outcome:** The food security, employment situation and dignified living standards for the 5,000 worst affected families or 25,000 people would be enhanced.

Outputs (expected results)	Activities planned
5,000 families of Satkhira and Jessore are provided with conditional cash grant support.	<ul style="list-style-type: none"> <li>• Conduct assessment for livelihood, food security and shelter needs, identify, select and register appropriate beneficiary families as per vulnerability criteria following BDRCS/IFRC standard cash grant programme.</li> <li>• Collection of investment plan of cash grant from each of 5,000 families through household survey by BDRCS unit volunteers.</li> <li>• Distribution of cash following BDRCS/IFRC standard procedures (through bank).</li> <li>• Monitor progress of beneficiaries' investment in livelihood tools, capital, income generation, and/or shelter repairing.</li> <li>• Maintain coordination with local administration and other agencies at the ground for avoiding duplication.</li> <li>• Documentation for record or audit trial.</li> <li>• Monitor and evaluate the relief activities and provide reporting on relief distributions.</li> </ul>

### Logistics

Logistics support will be provided following IFRC procedures to source and procure relief items needed, and to ensure the efficient and timely delivery of these items for the success of the operation. The BDRCS and IFRC in-country logistics teams, supported by the regional logistics unit (RLU) based in Kuala Lumpur, Malaysia, will carry out the following activities (if and when necessary):

- Conduct a rapid assessment for storage facilities in concerned BDRCS units.

- Launching tendering for procurement of items to be procured locally.
- Procurement of food and non-food items in coordination with RLU in KL.
- Quality inspection of goods.
- Warehousing of goods at Dhaka and district level.
- Utilizing BDRCS/IFRC fleet for transporting goods.
- Support replenishment of DP stocks through mobilisation of pre-positioned stocks from RLU in KL.
- Fleet management.
- Custom clearances and warehousing.
- If mobilization table is set-up, IFRC will work on mobilizing specific relief items to respond to needs in the field (for now no mob table has been requested). As such, donors should coordinate with the RLU regarding outstanding needs. The RLU will provide shipping instructions and issue a consignment tracking number before any goods are shipped to the operation. Procurement of goods and transport can also be arranged through RLU.

### **Communications – Advocacy and Public information**

The BDRCS and IFRC communications teams will work closely together to position and promote the Red Cross Red Crescent emergency and early recovery operation, ensuring a steady flow of timely and accurate information targeted at key stakeholders including the media, national societies, and prospective donors. This will build on the already extensive media coverage from the first days of this disaster. Articles and blogs on themes relating to the humanitarian situation and the Red Cross Red Crescent response will be promoted through IFRC communications channels including the BDRCS website, the news section of [www.ifrc.org](http://www.ifrc.org) as well as relevant social media platforms. Press releases and audio-visual content will be shared with media outlets and story ideas and spokespeople on the ground will be pitched to key broadcasters. In addition, updates on the evolving humanitarian situation and Red Cross Red Crescent action will be maintained on DMIS.

A regular flow of information will also be maintained between the BDRCS-led relief operation and the disaster affected population, to improve access for beneficiaries on our operations, so as to ensure transparency and accountability in aid delivery. Efforts will also be made to increase knowledge and understanding amongst beneficiaries about the Red Cross Red Crescent Movement and the Fundamental Principles, through the dissemination of related information.

All relief activities will be supported with appropriate branding, including banners, aprons and other items designed to improve awareness of BDRCS and IFRC's roles in relief efforts. Logos of BDRCS/IFRC and donors (as appropriate) will be printed on package of items like rice and other major relief items, so as to enhance Red Cross Red Crescent and donors' visibility. The South Asia regional office has deployed a communication officer to develop web stories on the flood situation to support the appeal coverage.

### **Capacity of the National Society**

BDRCS has 68 district/city branches throughout the country with a membership of more than 350,000 people. It also has 34,000 volunteers trained in community-based disaster preparedness/management across flood-prone areas. Another 40,000 volunteers are trained in cyclone preparedness programme (CPP) in cyclone-prone areas, one third of which are women.

BDRCS Satkhira, Jessore and Cox's Bazar units have a strong volunteer base (about 300 volunteers) with knowledge and skills in emergency response that are ready to be mobilized for response activities. BDRCS, with support from IFRC, has created a pool of national and regional disaster response team members who are kept standby to be deployed.

The National Society has extensive experience in responding to flood emergencies. Its leadership, officers and volunteers have wide-ranging operational experience in disaster relief. Currently in BDRCS, there are a number of officers who have international exposure working with the Movement. Its operational capacity has been developed through its experience in a number of extensive disaster relief and preparedness programmes over the last few years and most recently, the floods, Cyclone Sidr and Cyclone Aila operations. Though provision of cash grants in emergency operations is a new concept for BDRCS, they have gained considerable experiencing in implementing this in last couple of emergency and recovery operations of Cyclones Sidr and Aila.

Being mandated in the Standing Orders on Disaster of MoFDM, the BDRCS (through its district units) plays a vital role in local level disaster management committee to coordinate response operation activities of the government and other humanitarian actors.

In the current relief operation, unit level officers based at the district level are coordinating activities at the local level and also are assisting the units in assessment, distribution, monitoring and reporting on a regular basis. They are organizing the volunteers and mobilizing communities for implementing the current projects. The National Society also has a number of health facilities. Technical support is provided by the IFRC country, regional and zone offices. Owing to the recent large-scale flood and Cyclone Sidr operations, the capacity of BDRCS headquarters has been enhanced.

BDRCS has kept fleet on standby to immediately transport the goods from the national headquarters warehouse. The Cox's Bazar unit will also utilize the transport from their ongoing Myanmar Refugee Relief Operation (MRRO) in transporting items to the distribution spots.

### **Capacity of the IFRC**

The IFRC country office comprises of the head of delegation, disaster management coordinator, disaster management manager and disaster management officer. In addition, the country office also has an experienced programme coordinator and a project advisor for CCP. They assist BDRCS actively and continuously monitor the situation and help with the implementation of certain aspects of the operation. The Asia Pacific Disaster Management Unit in Kuala Lumpur is also providing technical support. In addition, South Asia regional office in Delhi provides technical support to the country team as and when required.

The IFRC disaster management team extends support to BDRCS in maintaining liaison and coordination with other humanitarian actors, including traditional partner ECHO, for the purpose of resource mobilization to the BDRCS response operation.

IFRC organizes in-country Movement partners meetings to explore and channel funding/support for any response to the emergency. IFRC supports BDRCS organize pre-disaster meetings annually where partners join together to look at response tools and procedures to keep them updated. Through the pre-disaster meeting held in 2011, IFRC has been providing technical support for the BDRCS response department to finalize the pre-disaster agreement which will be signed by all Movement partners in-country to mobilize resources internally in dealing with small and medium scale disasters which do not meet the criteria either of DREF or an emergency appeal. In addition, continuous support is given to the disaster management counterparts at BDRCS for timely producing reports/updates, etc.

The team is further supported by IFRC's South Asia regional office in Delhi as well as the Asia Pacific zone office in Kuala Lumpur, with additional technical capacity and specialists in disaster management, shelter, livelihoods, health and care, planning, monitoring, evaluation and reporting (PMER), media and communications, organisational development and finance.

### **Budget summary**

See attached budget (Annex 1) for details.

Mathias Schmale  
Under Secretary General  
Programme Services Division

Bekele Geleta  
Secretary General

## Contact information

**For further information specifically related to this operation please contact:**

- **Bangladesh Red Crescent Society:** Capt (ret'd) Abu Bakar, Secretary General, email: [bdracs@bangla.net](mailto:bdracs@bangla.net), phone: +88.02.935.2226.
- **IFRC Bangladesh country office:** Mr Udaya Kumar Regmi, Head of office, email: [udaya.regmi@ifrc.org](mailto:udaya.regmi@ifrc.org), phone: +88.02.933.7314, fax: +88.02.934.1631.
- **IFRC South Asia regional office, in India:**
  - Mr Azmat Ulla, Head of regional office, email: [azmat.ulla@ifrc.org](mailto:azmat.ulla@ifrc.org), phone: +91 11 2411 1122, fax: +91 11 2411 1128.
  - Mr Michael Higginson, Regional programme coordinator; email: [michael.higginson@ifrc.org](mailto:michael.higginson@ifrc.org); phone: +91.11.2411.1125; fax: +91.11.2411.1128.
- **IFRC Asia Pacific Zone office, in Malaysia:**
  - Ms Rose Dew, Operations Coordinator, phone: +603 9207 5735; mobile: +6012 213 0149; email: [rose.dew@ifrc.org](mailto:rose.dew@ifrc.org).
  - Mr Al Panico, Head of Operations, phone: + 603 9207 5700, email: [al.panico@ifrc.org](mailto:al.panico@ifrc.org).
  - Mr Alan Bradbury, Head of Resource Mobilization and Planning, Monitoring, Evaluation and Reporting (PMER), email: [alan.bradbury@ifrc.org](mailto:alan.bradbury@ifrc.org). phone: +603 9207 5775.
  - Mr Jeremy Francis, acting head of regional logistics unit; mobile: +6012 298 9752; email: [jeremy.francis@ifrc.org](mailto:jeremy.francis@ifrc.org).



Click here

1. **Emergency Appeal budget and map [below](#)**
2. **Click [here](#) to return to the title page**

## How we work

All IFRC assistance seeks to adhere to the Code of Conduct for the International Red Cross and Red Crescent Movement and Non-Governmental Organizations (NGO's) in Disaster Relief and the Humanitarian Charter and Minimum Standards in Disaster Response (Sphere) in delivering assistance to the most vulnerable.

The IFRC's vision is to inspire, encourage, facilitate and promote at all times all forms of humanitarian activities by National Societies, with a view to preventing and alleviating human suffering, and thereby contributing to the maintenance and promotion of human dignity and peace in the world.

[www.ifrc.org](http://www.ifrc.org)  
Saving lives, changing minds.



The IFRC's work is guided by Strategy 2020 which puts forward three strategic aims:

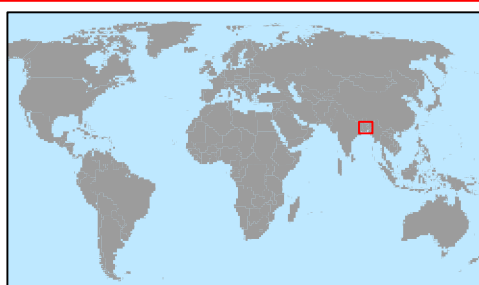
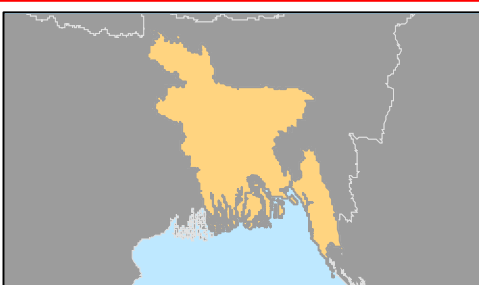
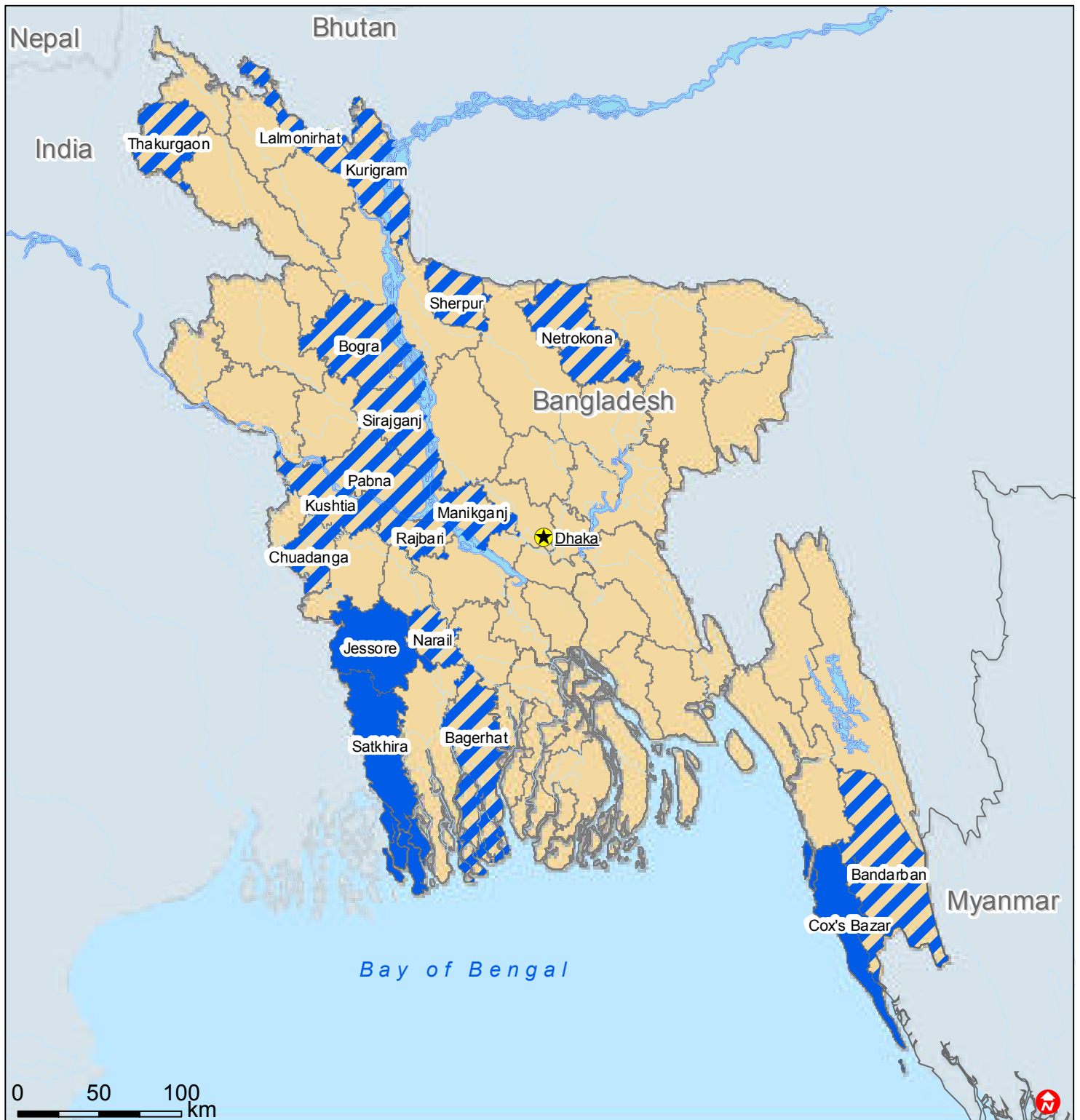
1. Save lives, protect livelihoods, and strengthen recovery from disaster and crises.
2. Enable healthy and safe living.
3. Promote social inclusion and a culture of non-violence and peace.

**BUDGET SUMMARY**

Budget Group	Multilateral Response	TOTAL BUDGET CHF
Shelter - Relief	127,040	127,040
Food	262,420	262,420
Water & Sanitation	66,485	66,485
Medical & First Aid	11,764	11,764
Ustensils & Tools	38,375	38,375
Other Supplies & Services & Cash Disbursements	511,780	511,780
<b>Total Supplies</b>	<b>1,017,864</b>	<b>1,017,864</b>
Computer & Telecom	1,883	1,883
Office/Household Furniture & Equipment	7,059	7,059
<b>Total Land, vehicles &amp; equipment</b>	<b>8,942</b>	<b>8,942</b>
Storage	1,412	1,412
Dsitribution & Monitoring	23,600	23,600
Transport & Vehicle Costs	9,600	9,600
<b>Total Transport &amp; Storage</b>	<b>34,612</b>	<b>34,612</b>
International Staff	19,200	19,200
National Staff	19,576	19,576
National Society Staff	18,584	18,584
Other Staff benefits	122	122
Consultants	15,000	15,000
<b>Total Personnel</b>	<b>72,482</b>	<b>72,482</b>
Workshops & Training	5,304	5,304
<b>Total Workshops &amp; Training</b>	<b>5,304</b>	<b>5,304</b>
Travel	7,200	7,200
Information & Public Relation	5,680	5,680
Office Costs	8,000	8,000
Communications	6,000	6,000
Financial Charges	2,400	2,400
Other General Expenditure	21,275	21,275
<b>Total General Expenditure</b>	<b>50,555</b>	<b>50,555</b>
Program Support	77,334	77,334
<b>Total Programme Support</b>	<b>77,334</b>	<b>77,334</b>
<b>TOTAL BUDGET</b>	<b>1,267,094</b>	<b>1,267,094</b>



# Bangladesh: Monsoon floods



- Most affected districts
- Affected districts