


www.ifrc.org
Saving lives,
changing minds.

Emergency appeal (Revised) Ethiopia: Drought

 International Federation
of Red Cross and Red Crescent Societies

Emergency appeal n° MDRET010 GLIDE n° DR-2011-000101-ETH 26 September 2011

This Revised Emergency Appeal seeks CHF 25,408,085 (plus CHF 3,000,000 for bilateral Emergency Response Units) totalling CHF 28,408,085 in cash, kind, or services to support the Ethiopian Red Cross Society (ERCS) to assist 570,000 beneficiaries for 12 months and will be completed by 31 August 2012. A final report will be made available by 30 November 2012 (3 months later).

Current appeal coverage: 51% against current budget; 19.7% on the revised (increased) appeal budget. Please note that the Ethiopian Red Cross is on the direct cash transfer system.

Appeal history:

- CHF 200,000 was allocated from the International Federation of Red Cross and Red Crescent (IFRC) Disaster Relief Emergency Fund (DREF) to support this operation. Unearmarked funds to replenish DREF are encouraged.
- A [Preliminary Emergency Appeal](#) was initially launched on 5 August 2011 for CHF 10,978,250 for 6 months to assist 165,000 beneficiaries.
- An [Operations Update no.1](#) was published on 30 August 2011 informing on the deployment of a multi-sector assessment team to the affected region of Moyale.



The ERCS/IFRC multi-sector assessment team in a community meeting in Gofa woreda in Moyale. Source: IFRC.

Summary: Based on the immediate needs identified during the initial assessments, the IFRC logistics and ERCS procurement department initiated the local tendering of 8,100 MT of maize, 810 MT of beans (in bags of 50 kg.), 725 MT of CSB (in bags of 25 kg.) and 270,000 litres of vegetable oil. These food items are in process of being procured and will be delivered to Moyale by end of September 2011. In addition, the tendering process for 16,000 locally procured mosquito nets has been completed and 34,000 additional mosquito nets have been procured by the Regional Logistics Unit in Dubai. The 50,000 nets will be distributed to a total of 25,000 most affected families in the Guji and Borena Zones.

This Revised Appeal includes scaling up of activities in the water, sanitation and health sectors based on the preliminary findings from the in-depth assessment team deployed to Moyale (Borena and Liben zones), Guji and Bale zones of Oromiya Region¹. The final report of the assessment is available for sharing with partners. The ERCS is preparing a response plan to address drought priorities following the recommendations of the assessment and the existing capacities. The High Level Coordinator (HLC) for Horn of Africa (HOA) drought response operations paid a visit to Ethiopia together with the Head of Operations for Africa and Under Secretary

¹ **Second phase of assessment:** The team was composed of members from Ethiopian Red Cross Society (ERCS), IFRC and Partner National Societies (PNS) of Austria, Britain, Canada, Germany and Spain

General, Programme Service Division, in the second half of August 2011. From the meetings held with ERCS, PNSs, UN and Governmental agencies, it was agreed with the National Society to revise the appeal and include new operational areas and related activities. Consequently, based on the situation, this revised emergency appeal responds to a request from the National Society and presents a scaling up of the appeal activities and an increase in budget and operational timeframe for up to 12 months.

[<Click here to view the attached revised Emergency Appeal Budget; here to view a map of the affected areas; or here to view contact details>](#)

The situation

According to the International Organization for Migration (IOM), the severe drought affecting vast areas of Ethiopia is resulting in a considerable increase in complex, multi-directional migration flows, both within and across international borders. According to the United Nations High Commissioner for Refugees (UNHCR) reports, the outflow from Somalia into Ethiopia has slowed, but the Dollo Ado camps continue to face challenges, and the health of newly arriving refugees continues to be poor. Although the number of new arrivals from Somalia in the Dollo Ado area has increased slightly over the previous weeks' average, the mortality rates amongst the refugee population remain high. Meanwhile, some 20,000 refugees from Sudan are estimated to have arrived in Ethiopia from Blue Nile State. Of the new arrivals, some 2,700 have already been transferred to Sherkole camp in Ethiopia's Beneshangul Gumuz Region. UNHCR, the Administration for Refugee and Returnee Affairs (ARRA) and health partners continue to battle the high child mortality rate. Urgent interventions in health and nutrition continue, with hygiene promotion activities ongoing. Four satellite health clinics have already been established, with plans to further decentralize services so that refugees can more easily access medical health care. Facilities are now open on a 24-hour basis at Medecin sans Frontiers (MSF's) clinics in Hilaweyn, and construction has begun on Dollo Ado's second stabilization centre for acutely malnourished children in Kobe camp, where measles immunization has been completed. In Somali Region, the Disaster Prevention and Preparedness Bureau (DPPB) is now issuing a weekly water trucking "hot spot" list so that humanitarian actors provide assistance accordingly and scale up their response activities. Gaps in water provision continue to emerge, particularly in lowland Oromiya (Guji and Borena Zones).

The World Health Organization (WHO) has reported localized outbreaks of measles in the Southern Nations, Nationalities, and People's region (SNNPR-namely, Gamo-Gofa and Segen Areas Peoples' zones). Similar reports have been received from Amhara (North Wollo and North Shewa zones). MSF-Holland is providing support in vaccinations. According to the United Nations Office for the Coordination of Humanitarian Affairs (OCHA), up to four million people need assistance through water trucking, rehabilitation and maintenance of boreholes and other water sources, as well as provision of water purification and treatment chemicals for the second half of the year. Water scarcity continues to affect many parts of Somali, Oromiya, Afar and Tigray regions, necessitating a range of interventions including water trucking. Response so far has been from Water, Sanitation and Hygiene (WASH) cluster in supporting 79 water trucks, benefiting 126,000 people. In order to expand the current response, the United Nations Children's Fund (UNICEF) is establishing new agreements with Oxfam International to work on WASH for host communities in the Somali Region, and with CARE in drought-affected areas of Oromiya Region. Food insecurity is prevalent in the pastoral, agro-pastoral and belg producing parts of Oromiya Region as a result of drought, and in East and West Hararghe zones due to increase in grain prices, absence of gap filling crops and reduced livestock prices. The Ethiopian Grain Trade Enterprise has signed a contract to import 300,000 tonnes of wheat to be used primarily for domestic price stabilization purposes and to assure food supply amid drought.

In Afar Region, the Government of Ethiopia (GoE) informs that at least 44,600 people have been affected by the drought. The drought has affected Erebt, Kori, Bidu, Teru, Semerub, and Megale woredas (districts) and new areas are expected to be affected in this region. Federal and regional governments and humanitarian agencies in the region have responded rapidly to the emergency. The regional government conducted rapid assessments, established a drought coordination task force and prepared a response plan in health and nutrition, water, sanitation and hygiene education, agriculture and livestock.

Water availability is the overall most critical issue in the worst affected areas of Oromiya and Afar. This has been confirmed by the assessment mission findings (by UNICEF, UNHCR and ARRA) and is partly linked to the drought situation itself and partly to the structural failures. The following factors characterize the situation:

1. Water points are not working due to the lack of maintenance, broken pumps, pipes and other mechanical defects.

2. Lack of contingency capacity when it comes to addressing water problems, with a lack of water resources, water tanks and shallow wells are dried out.
3. There is a general lack of deep wells, insufficient water points and wells, leading to insufficient fresh water in the dry season.

With regard to livestock, the Food and Agriculture Organization (FAO) reports that while there are no official estimates of anticipated losses due to drought, mortality rates can be expected to be around 60 per cent in cattle, 40 per cent in sheep and 25-30 per cent in goats, representing a huge loss of livestock with profound impact at the household and national economic levels. While livestock prices remain stable in most of the country, the price of emaciated animals in drought-affected areas of the southern highlands has collapsed. The recovery period will take quite a long time for the affected population and farmers could take several years to restore their livelihoods.

This revised appeal is based on the above information provided by the government and UN agencies and on findings obtained by the IFRC and ERCS assessment teams to better address the real needs of the affected population.

Coordination and partnerships

This revised emergency appeal is a result of the coordinated approach between Movement partners working in Ethiopia and supporting ERCS operations. Similarly, the implementation of the activities defined under this appeal will be carried out in the spirit of coordination and collectiveness by the RC/RC Movement led by ERCS. The ERCS, as the lead implementing organization, is supported by the IFRC country office, Partner National Societies (PNSs) and the ICRC within their capacities.

The ERCS leads monthly Movement Cooperation Meetings (MCM) at country level. The MCM is a forum for Movement partners in-country, to update each other on activities carried out, share experiences, discuss cross-cutting issues and coordinate interventions. Currently, there are four PNSs present in-country including Austrian, German, Italian and Spanish Red Cross implementing bilateral projects with ERCS. The National Society, in coordination with IFRC, deployed a ten member in-depth assessment team to the Oromiya and Somali regions. Members of the team included ERCS staff and Austrian, British, German and Spanish Red Cross delegates. Based on the information provided by the assessment and recommendations by the team and other agencies, this appeal is being revised.

Since the onset of the operation an Operational Task Force (OTF) was established between ERCS and Movement partners in order to address operational matters. Meetings are on-going and are chaired by the ERCS Deputy Secretary General for Operations and include ERCS key departments and the IFRC. Additionally, the IFRC Country Representative and the High Level Coordinator for Horn of Africa Operations are currently overseeing the planning and implementation of this operation before an in-country Operations Coordinator is in place. A separate operations management unit, led by the Operations Coordinator, will be established to plan, coordinate and implement drought response related activities. Operations management unit will be serving as umbrella unit for coordinated and collective response to drought by the Movement partners.

The ERCS selection of operational areas and beneficiaries has been agreed upon with the relevant authorities at Federal, Regional, Zonal and Woreda (districts) levels. The final allocation of target areas will be done by the GoE, taking into account the interventions from all other actors' in-country. In addition, ERCS and IFRC members attend regular UN meetings to share information on the current emergency and avoid any duplication of actions.

National Society Capacity Building: Drought, food insecurity and seasonal floods are the main hazards affecting Ethiopia. Since the early 1980's, ERCS has been implementing and delivering large-scale operations involving disaster relief, food security and improving livelihoods for the most vulnerable. One of the four core programmes of ERCS is the Food Security and Disaster Preparedness/Response department since ERCS realizes the necessity and importance of disaster preparedness and response in times of natural disasters. Over the years, the ERCS has established a National Disaster Response Team (NDRT) and Branch Disaster Response Team (BDRT) in order to respond to emergencies as fast as possible. In terms of disaster preparedness activities, pre-positioning of non-food items has been ensured by ERCS to respond faster in case disaster strikes. The current emergency operation will be incorporating and addressing the certain NS capacity building elements related to emergency response, water and sanitation, health and branch capacity building to deliver better services to the communities during emergencies.

Red Cross and Red Crescent action

Overview: The Ethiopian Red Cross Society, supported by the IFRC and PNS, has been implementing food security and drought response operations in different parts of the country for a number of years. Presently, the ERCS is involved in food security and drought related operations in the Moyale Area (southern Oromiya), Bale Zone (Oromiya), South Wollo and North Shoa zones (Amhara) and Tigray. These projects are supported by the German and Spanish Red Cross bilaterally as well as the Swedish and Swiss Red Cross multilaterally through the IFRC.

ERCS conducted assessments in Moyale, in April 2011, which confirmed the emerging drought situation and recommended activities in both parts of Moyale – Somali and Oromiya. Most of the proposed activities are included in the project funded by the Swiss Red Cross.

In response to the emerging crisis in the southern part of Ethiopia, the ERCS conducted an assessment following the launch of the Government's Humanitarian Requirements Document (HRD) at the beginning of July 2011. The ERCS governance and senior management decided to scale up response activities and asked the IFRC and the PNSs to support their assessment. British, Spanish and Swedish Red Cross as well as the IFRC deployed personnel to support the rapid assessment in Borena and Guji zones, in Oromiya Region. The locations were selected based on available data, previous analysis/assessments and the severity of the problem highlighted in the HRD. Despite the Somali Region being the hardest hit areas by the drought, with communities hosting a high proportion of refugees from Somalia, the region was not considered within the initial assessment as the area comes under the mandate of the ICRC and negotiations were ongoing with the government over access. The assessment was conducted by three ERCS/PNS/IFRC teams with debriefing and presentations carried out at the headquarters level in Addis Ababa. Due to time limitations, the teams could not collect sufficient information and data to define the exact size or areas of interventions for scale-up.

A second assessment team was deployed to Oromiya and Somali regions for an in-depth evaluation from 12 to 26 August 2011. Each team member was experienced in the specific sectors including disaster risk reduction, food security, health, nutrition, WatSan, livelihoods and markets, logistics and finance and organizational development. The team assessed woredas in Oromiya Region (Borena, Moyale, Mio, Dire, Saba Boru and Meda Welabu). The major findings and conclusions of the assessment relate to and address the following: water and sanitation, food interventions, health, food security, livelihood, risk reduction and capacity building of branches. The final report of the assessment is available for sharing with partners. The ERCS is preparing a response plan to address drought priorities following the recommendations of the assessment and the existing capacities.

The ERCS has been working steadily throughout the crisis, within the field of food and health, and is now ready to step up its efforts in close cooperation with the Red Cross/Red Crescent Movement partners.

It was agreed to set up a special operation management unit, with the ERCS coordinating and following up implementation of activities under the emergency appeal. Four positions within the operations unit have been advertised: Operations Coordinator, Logistics Coordinator, WatSan Coordinator and Health Coordinator. For more information: <https://jobnet.ifrc.org/public/index-ifrc.asp>.

The needs

Overall, there are 4.5 million people in need of emergency food interventions from July to December 2011.² The total amount of the appeal launched by the Government of Ethiopia through its HRD is USD 398 million. This amount includes provision for emergency food interventions, health and nutrition, water and sanitation, agriculture and livestock and education. It is worth mentioning that based on the HRD, the at-risk population identified under the health component is approximately 8.8 million. Plans include the control of epidemics/outbreaks of communicable diseases including acute watery diarrhoea (AWD), Measles, Malaria and Meningitis. The planned intervention also encompasses strengthening the health service delivery system in high risk woredas through health and nutrition interventions for the most affected people, as well as building the capacity of the health system to effectively respond to public health emergencies. WASH sectoral provisions include rehabilitation and maintenance of the existing water schemes, construction of new water supply schemes, water purification and treatment chemicals, sanitation and hygiene facilities.

² Humanitarian Requirements Document (HRD) – July 2011, Government of Ethiopia.

Beneficiary selection: Target beneficiaries for initial interventions are selected based on the estimations provided by the Disaster Risk Management and Food Security Sector (DRMFSS) of the Ministry of Agriculture. The cumulative target number of beneficiaries in Oromiya, Afar and in Moyale, Somali regions to be supported by the Ethiopian Red Cross Society is approximately 570,000. This number of beneficiaries is based on the rapid and in-depth assessments carried out so far.

Generally, targeting of the beneficiaries is carried out in coordination with the DRMFSS local offices and local authorities with direct participation of communities and local committees for household targeting, based on vulnerability criteria. The ERCS, with its volunteers, will undertake screening of beneficiaries in collaboration with the *kebele* (village) committees, register them, conduct distributions and monitor the process of interventions.

Immediate needs: Water is considered the most critical need in the worst affected areas of Oromiya and Afar. Food insecurity continues to be widely prevalent in the pastoralist, agro-pastoralist and belg crop-producing areas of Oromiya Region, as a result of failure of two consecutive rainy seasons. The affected communities in those areas have lost significant livestock assets and malnutrition is on the rise. In southern pastoral areas, particularly in Borena Zone, shortage of pasture and water is widely prevalent and is a major concern reported by the assessment team. Pasture and water availability is relatively better in Guji and Bale. The physical condition of livestock is very weak in the lowlands of Borena Zone. The majority of households in affected and assessed areas have significant food consumption gaps, resulting in acute malnutrition rates that are above or near to recognized emergency thresholds. The most urgent needs for communities are related to access to safe water, cash and food, animal health and feeding, health awareness and where appropriate restocking to pastoralist families who lost key stock.

The proposed operation

Based on the findings of the assessments teams, recommendations by the Government of Ethiopia and other UN agencies, this revised appeal includes increasing activities in the areas of water, sanitation and health. The areas of intervention will be in the Oromiya and Afar regions by implementing water projects: rehabilitation of water points and water ponds, well refurbishing, water distribution, construction of shallow wells and deep well drilling. These activities have been planned through six PNS water packages described below. In addition, four (4) ERU deployments are being considered to support a new Refugee camp in Bora Mino (Dollo Ado zone in Somali Region) to provide water and sanitation and basic health care services. For the moment, the rest of the sectors included in this appeal will remain the same until a final plan of action is completed by the ERCS with support of the IFRC.

Relief distributions (basic food items)

Outcome: Household food consumption among targeted drought affected population is improved.	
Outputs (expected results)	Activities planned
Appropriate food rations are distributed to targeted beneficiaries.	<ul style="list-style-type: none"> • Develop Memoranda of Understanding (MoU) or agreements between the Government of Ethiopia and the ERCS. • Sourcing 8,910MT of food (8,100MT of maize, 810MT of beans and 725MT of CSB) and 270,000Lt of cooking oil. • Establish a logistics hub in each operational area. • Contract local service providers to transport food from hubs to the distribution points. • Mobilize 120 volunteers for facilitating beneficiary identification and relief distributions. • Identify beneficiaries; agree on distribution lists including verification and validation. • Distribute food up to 135,000 beneficiaries in Guji and Borena zones of Oromiya region. • Distribute supplementary food for families with children under 5-years of age, elderly persons, pregnant and lactating women (35 percent of caseload). • Monitoring, evaluation and reporting.

Progress: The IFRC logistics and ERCS procurement department have initiated the local tendering of 8,100 MT of maize, 810 MT of beans (in bags of 50 kg.), 725 MT of CSB (in bags of 25 kg.) and 270,000 litres of vegetable

oil. These food items are in process of being procured and delivered to Moyale by end of September 2011. Once the detailed plan of action is completed, a distribution plan will be shared with exact number of beneficiaries and locations based on the findings of the multi-assessment team. Possible areas of intervention based on the below information from the assessment team can be the following:

Moyale (Oromiya):

- 17,200 beneficiaries require assistance. This figure increased since July 2011 figure of 14,570 beneficiaries.
- Distribution of 4 months of full ration, September to December 2011.
- Beneficiary identification has been completed for kebeles and distribution points and storage points have been identified. Warehouse capacity and travel distances have been compiled as well as potential transport hubs and costs.

Mio, Borena (Oromiya):

- 31,925 beneficiaries are currently receiving food rations from the government.
- 7 delivery points have been identified, warehousing, capacity and distances from Hitiola. Majority of the points are on the main road to Moyale.
- Woreda administration strongly recommends to distribute maize and livestock feed to 596 HHs in 7 kebeles.

Dire, Borena (Oromiya):

- 28,999 beneficiaries are currently receiving food rations from the government.
- Same 7 delivery points identified in Mio.
- A distribution plan to be shared with exact number of beneficiaries

Saba Boru (Guji) Oromiya:

- 59,471 beneficiaries are currently receiving emergency food aid from the government.
- Recommendation to ERCS to distribute food items from September-December 2011, four rounds of full food rations. A distribution plan to be shared with exact number of beneficiaries
- Shakiso identified for distribution hub and 7 distribution points identified across the kebele.

Relief and early recovery through cash transfer interventions

Outcome: Selected households have their remaining assets protected and some lost assets replaced so improving their ability to produce food or restart livelihoods and reduce use of negative coping strategies.

Outputs (expected results)	Activities planned
Household access to food, essential household items and livestock in targeted areas has improved by assisting with conditional cash transfers.	<ul style="list-style-type: none"> • Agree with local authorities and communities on criteria for targeting beneficiaries for cash grants. • Identify most vulnerable households through community screening. • Identify modalities and distribution mechanisms for cash transfers as well as cash grant value and monitoring mechanisms. • Distribute cash grants equivalent to USD 250 per HHs for 4,000 households (20,000 people). (To be refined based on assessment). • Establish joint community-ERCS supervision committee to effectively and transparently manage cash grant programming. • Closely monitor and evaluate intervention at the end of the piloting.

Progress: The interdisciplinary team from ERCS, IFRC and delegates from the Austrian, British and German Red Cross conducted fieldwork in six woredas between 12 and 26 August 2011. The team assessed the potential cash intervention and has provided some recommendations to ERCS for this kind of intervention. The ERCS has not made final agreement with authorities and communities to plan and expedite cash grants. Coordination and experience sharing forums involving international and national NGOs for cash grants has been recently established in Borena Zone, Oromiya Region.

Emergency health and care

Outcome: Excess morbidity and mortality from diseases related to malnutrition and lack of access to clean drinking water are prevented by providing targeted health and nutrition interventions to up to 150,000 people over a period of 12 months.	
Outputs (expected results)	Activities planned
The health status of the population is improved through early detection and management of epidemic disease outbreak and under nutrition.	<ul style="list-style-type: none"> • Train 250 volunteers in the Guji and Borena Zones on epidemic disease control for volunteers, to enable them to support the existing extension health workers to conduct health and hygiene promotion, nutritional screening and active case finding to prevent, manage and control potential disease outbreak. • Enable 250 volunteers logistically (transport, IEC material etc), conduct a minimum of 3 interventions per volunteer per week in health and hygiene promotion, nutritional screening, active case finding and management of epidemic disease outbreak and under nutrition.
Contribute to the control of the current measles outbreak by providing support to the MoH in the upcoming emergency measles vaccination.	<ul style="list-style-type: none"> • Deploy 250 volunteers trained on epidemic control for the upcoming measles vaccination campaign to assist with social mobilisation and campaign activities.
25,000 most affected families are reached by volunteers disseminating messages on malaria prevention and control and distribution of long lasting insecticide nets (LLIN), usage, and assist in the correct hanging of the nets.	<ul style="list-style-type: none"> • Procure and distribute 50,000 mosquito nets to 25,000 most affected families in the Guji and Borena Zones. • Procure nails and strings to enable appropriate hang up of mosquito nets. • Disseminate key messages concerning LLIN use and malaria (targeting pregnant women and caretakers for children under 5) utilizing the 250 trained volunteers, extension health workers and community members.
Sustainably contribute to an improved health status of the population in the drought affected Woredas through regular health activities based on Community Based Health and First Aid interventions.	<ul style="list-style-type: none"> • Train and manage 250 volunteers in CBHFA . • Enable 250 volunteers to conduct regular CBHFA activities in the Guji and Borena Zones.

Progress: The tendering process for 16,000 locally procured mosquito nets has been completed. In addition, 34,000 mosquito nets have been procured by the Regional Logistics Unit in Dubai. The 50,000 nets will be distributed to a total of 25,000 most affected families in the Guji and Borena Zones.

A Health Coordinator position has been published on IFRC's [jobnet](#). This person will assist in jump starting the initial planned activities in the health sector.

The multi-assessment team visited the areas of Moyale, Mio, Dire, Saba Boru and Meda Welabu in Oromiya Region. The preliminary findings in all of the areas indicate no signs of major outbreaks related to the drought. Nevertheless, health posts need support as there is a shortage of drugs and the incoming refugees in Somali Region need basic health care. Activities in this sector will be revised when a detailed plan of action is completed.

Water, sanitation, and hygiene promotion

Outcome: Increased access to water through new and repaired water points in Oromiya and Afar. Increased knowledge and ability to maintain and repair water points.	
Outputs (expected results)	Activities planned
Availability and access to water for both households and livestock increased.	<ul style="list-style-type: none"> • 48 new deep well boreholes. • 72 refurbished water points. • 12 refurbished water ponds. • 60 shallow wells refurbished, with water reservoirs • Water trucking at a limited scale to cover absolute emergency phase needs.

The health status of the population is improved through behaviour change and hygiene promotion activities.	<ul style="list-style-type: none"> • 100 community volunteers trained in PHAST to act as hygiene and behaviour change agents by facilitating community dialogues with their respective communities. • Produce PHAST tool kits. • Establish PHASTER groups in targeted communities and cascade the training. • Procure 486,000 water treatment chemicals and distribute to 27,000 households. • Communities and volunteers trained on appropriate use of water treatment chemicals. • Develop information, education and communication (IEC) materials focusing on prevention of AWD and other water born diseases.
Appropriate sanitation is provided to 15,000 beneficiaries in Guji and Borena zones of Oromiya region.	<ul style="list-style-type: none"> • Produce a total of 3,000 san-plats and build model latrines as a precursor for large-scale latrine construction as part of longer-term recovery following PHAST methodology. • Distribution of san-plats in targeted communities. • Community sensibilization and training on the use of latrines.

Progress: The ERCS/IFRC is aiming at a thorough and massive upgrade of the water point structures in Oromiya and Afar, approximately reaching 62,000 people. This will be achieved by a systematic mapping of the following three elements:

- Addressing the water points that are not working due to a lack of spare parts or lack of maintenance, etc.
- Addressing the water points' lack of surge capacity, lack of reservoirs and water tanks as well as the shallow wells that are dried out
- Systematic mapping of needs for new deep wells boreholes.

The ERCS/IFRC is planning to establish 6 water teams working alongside the three pillars above. Each of the teams will also be assigned to a package whereby a PNS³ will be involved (lead role), taking on full technical and financial responsibility. This will involve the deployment of:

- Two water teams focused on maintenance, repair and refurbishing of water points;
- Two water teams focused on refurbishing of shallow water wells and surge water capacity;
- Two water teams on deep well and boreholes drilling.

Water trucking will be used solely as a temporary emergency solution. With the deployment of the six water teams, the ERCS/PNS/IFRC will address the structures and the root causes of the lack of water in Oromiya and Afar. A Water and Sanitation Coordinator position for this operation has been published on [jobnet](#).

The multi-assessment team has provided the following preliminary findings in this sector:

- There is a need for water trucking in Moyale.
- In Mio (Borena) there is no need for water trucking. There are 9 trucks already providing service from other agencies.
- In Dire (Borena) 2 additional trucks are required to increase capacity. There are 4 trucks already providing service from other agencies to each point on a weekly basis. Several dysfunctional ponds with a range of technical problems were identified and need maintenance.
- In Saba Boru (Guji) there is limited water access due to poor road conditions. Long term recommendations are to rehabilitate shallow wells and ponds including roof catchments⁴.
- In Meda Welabu (Bale) there is an immediate need for a water truck and water storage. 12 dysfunctional water sources were identified. For longer term response, recommendations are to provide concrete sanplat latrine slabs and conduct water committee trainings.

Refugee assistance in Dolo Ado

Outcome: Provide emergency relief to two sites: Bora Mino A (40,000 refugees) and B (20,000 refugees) with the provision of health and care and water services.	
Outputs (expected results)	Activities planned
The health status of refugee	<ul style="list-style-type: none"> • Deploy assessment team to Dollo Ado and identify possible areas of

³Some PNS have already expressed their interest in these 6 water packages.

⁴ Roof catchments: containers placed on the roof to trap rain water

population in new camps around Dollo Ado is improved	<p>interventions by the ERCS supported by the RC/RC Movement partners.</p> <ul style="list-style-type: none"> • Draft a Plan of Action based on the assessment outcome. • Agree with relevant government authorities and UNHCR on intervention scope and size by the ERCS.
Availability of and access to water.	<ul style="list-style-type: none"> • Deployment of additional water teams and/or ERUs according to needs (based on assessment outcomes).

Progress: According to the OCHA Report no. 14, dated 15 September 2011, UNHCR has informed that the number of new arrivals from Somalia in the Dollo Ado area has increased slightly over the previous weeks' average, while mortality rates amongst the incoming population remains high. There are approximately 194,000 refugees in Dollo Ado in four (4) camps and others also established on a temporary basis since the available camps are over crowding thus leading to poorer standards of health, hygiene and water services. UNHCR intends to open two (2) new camp sites namely, Bora Mino A and Bora Mino B. The ERCS, with IFRC support, has been requested to assist in offering some services in the 2 camps that will open in 4 to 6 weeks. The plan of action, once finalized will provide exact activities to be implemented as well as the beneficiary figures. At the moment, the revised appeal has allocated an estimate budget of CHF 3,000,000 for possible deployment of ERUs⁵:

Logistics

The IFRC will provide support to the ERCS in implementing the emergency operation including logistics. Logistics delegates will be deployed to support the ERCS in setting-up necessary supply chains and controlling and monitoring supply movements to the final distribution points. A detailed logistics and procurement plan for the operation will be developed by ERCS supported by IFRC. The plan describes all necessary steps with the timeframe from the procurement to transportation and deliveries to the final destination of the beneficiaries. A number of delegates will be identified at a later stage within the revised document to respond to the scaled-up size of the operation. Support for the provision of fleet services and vehicles will be provided by the Dubai Regional Logistics Unit (RLU) and Fleet Base. Potential scaling-up would require considerable capacities in logistics, procurement and warehousing which may be ensured by mobilizing surge capacities and strengthening existing capacities within the ERCS.

Outcome: Humanitarian goods are procured, stored, delivered and distributed in a timely, transparent and cost-effective manner.	
Outputs (expected results)	Activities planned
<p>Well coordinated mobilization of relief goods;</p> <p>Coordinated delivery to the operational areas ensuring proper storage and distribution to affected communities;</p> <p>Provision of all necessary vehicles for the operation and effective fleet management;</p> <p>The Federation will also work with the Ethiopian Red Cross Society to support and build logistics capacity through training, workshops, and providing delegates to support the logistics function.</p>	<ul style="list-style-type: none"> • Assist the ERCS in setting up effective and efficient supply chain and provide reporting on performance. • Support the ERCS in developing detailed logistics and procurement plan for the operation. • Build necessary fleet base capacities to support the operation. • Assist the operation in developing a beneficiary targeting strategy and registration system. • Distribute relief supplies and control supply movements from the point of dispatch to the end user. • Assist the operation in delivering services for the communities including procurement of goods, services and other equipment. necessary for effective implementation of the planned activities. • Work closely with the ERCS to strengthen their capacities in procurement, fleet management and supply chain management including training of the operational staff. • Procure required items. • Establish a logistics hub in each operational area. • Contract local service providers to transport food from hubs to the distribution points.

⁵ The final assessment report for this component may provide new findings which may change the budget figures as well as the decision to deploy ERUs.

Progress: A detailed and up-to-date mobilization table is available on the International Federation's Disaster Management Information System (DMIS). The IFRC is working on mobilizing specific relief items to respond to the needs in the field and donors/partners need to coordinate with the IFRC's Dubai Regional Logistics Unit (RLU) regarding the outstanding needs. Tendering and procurement process have been completed for mosquito nets and plastic water tankers. The tendering process for food items is underway. A logistics coordinator position has been advertised for the operation and selection process completed. All local, regional and international procurement will be carried out following IFRC procurement procedures.

The IFRC logistics and ERCS procurement department have initiated the local tendering of 8,100MT of maize, 810MT of beans (in bags of 50kg.), 725MT of CSB (in bags of 25kg.) and 270,000 litres of vegetable oil. These food items are in process of being procured and delivered to Moyale by end of September 2011. As mentioned before, the tendering process for 16,000 locally procured mosquito nets has been completed and 34,000 mosquito nets have been procured by Dubai RLU.

Shipping instructions and mobilization guidelines will be provided to donors by Dubai RLU, with a consignment tracking number issued prior to shipping any goods to the operation. Procurement of goods and transportation can be arranged through Dubai RLU.

Communications – Advocacy and Public information

Maintaining a steady flow of timely and accurate information between the field and other major stakeholders is vital for fundraising, advocacy and maintaining the profile of emergency operations. During an operation, communications between affected populations and the Red Cross and Red Crescent, as well as with the media and donors, is an essential mechanism for effective disaster response and the cornerstone to promote greater quality, accountability and transparency. The communications activities outlined in this appeal are aimed at supporting the National Society to improve their communications capacities and develop appropriate communication tools and products to support effective operations.

A detailed plan of action will be developed with the National Society that puts an emphasis on both positive media relations and producing content that outlines the needs of the affected populations and the positive stories of previous/ongoing drought interventions.

Outcome: The profile and position of the host national society and the IFRC are enhanced, leading to increased availability of funds and other resources to support this and future emergency operations.	
Outputs (expected results)	Activities planned
<ul style="list-style-type: none"> Communications products are made available to media and stakeholders. 	<ul style="list-style-type: none"> News releases, fact sheets, video, photographs and interviews with qualified spokespeople are developed and made available to media and key stakeholders. Direct outreach will be coordinated with the Host National Society and conducted with national and international media. The launch of this appeal and other major milestones throughout the operation will be supported with people-centred, community level diverse content, including web-stories, video footage and photos will be posted to ifrc.org and shared with other global humanitarian web portals and international media An IFRC communications officer will be deployed immediately to the affected region, coordinating the gathering and dissemination of communication materials, liaising with and supporting the Host National Society and acting as spokesperson/media relations focal point for international media.
Existing and potential donors, national societies and other partners receive and use high quality communications materials and tools they need to raise funds and build awareness for this emergency.	<ul style="list-style-type: none"> A communications tool-kit will be developed and distributed to key stakeholders that includes draft news releases, opinion pieces linking the operation to IFRC advocacy priorities (e.g. early warning, emergency health, IDRL), key messages, talking points, reactive lines addressing existing and potential risks to reputation, beneficiary profiles, photos, extended captions and access to video footage for use in the partners' domestic markets. Conference calls for global communicators will be held as needed to share updated information and to understand emerging opportunities and needs in the communications arena.

Progress: The IFRC has been supporting all communication activities with the deployment of the Africa Zone communications coordinator who has conducted visits, media interviews and obtaining film photographs. Case studies were made available to the global Red Cross Red Crescent Movement. These materials were used on channels such as the [IFRC website](#), National Society websites and international media to give visibility to the needs of the affected populations as well as highlight ERCS response to the drought situation.

Capacity of the National Society

Outcome: ERCS capacity at Headquarters and branch levels to deliver more effective services to vulnerable people and respond to future emergencies has increased.	
Outputs (expected results)	Activities planned
Capacities of the ERCS branches in operational areas strengthened to ensure adequate service deliveries to vulnerable communities.	<ul style="list-style-type: none"> • Provide necessary technical guidance, information technologies and equipment. • Provide with adequate transport and fleet capacities to ensure mobility and rapid response. • Provide necessary office equipment and furniture. • Training of branch staff in disaster management, logistics, first aid, nutrition, volunteer/youth mobilisation and project management. • Conduct training of the Branch governance on relationships between the management and the governance in operational branches.
Enhanced capacity of the National Society to better respond to humanitarian challenges and coordinate branch activities.	<ul style="list-style-type: none"> • Provide necessary information technologies and equipment. • Conduct training of the staff and volunteers in disaster management, logistics, first aid, nutrition, reporting and project management. • Organize programme review meetings at branch and HQ level. • Organize peer education and exchange visits with sister National Societies • Organize training of the ERCS HQ and branch staff in “early recovery” and “cash programming”. • Training and dissemination of Sphere standards. • Conduct programme evaluation and/lessons learnt exercises to identify strengths and weakness of the response activities and take relevant measures for future operations –organizational learning. • Strengthen the ERCS PMER capacities through peer support, trainings and recruitment of necessary staff at HQs and branch levels. • Train ERCS volunteers and staff in community development approach in operational branches.

Progress: There has been limited progress in this sector. An Organizational Development officer was part of the assessment team deployed to Moyale Region. There is a need to strengthen ERCS branches in the areas of the planned interventions. The current emergency interventions could serve as entry point in further strengthening ERCS Borena Zone Branch particularly in Moyale Town and Yabello (Zone center). The activities within this objective will be updated once the plan of action is completed.

Budget summary

Please note that the Ethiopian Red Cross is on the direct cash transfer system. See attached budget (Annex 1) for revised budget details.

Mathias Schmale
Under Secretary General
Programme Services Division

Bekele Geleta
Secretary General

Contact information

For further information specifically related to this operation please contact:

- **In Ethiopia:** Mrs. Frehiwot Worku, Secretary General, Ethiopian Red Cross Society, Addis Ababa; Phone: +251.11.515.38.53; Email: ercs.sg@ethionet.et
- **In Ethiopia:** George Gigiberia, Country Representative, IFRC Phone: +251 11 551 45 71, 551 43 17; Mobile: +251 911 20 71 63; Email: george.gigiberia@ifrc.org
- **IFRC Africa Zone:** Dr Asha Mohammed, Head of Operations, Johannesburg; Phone: +27 11 3039700; Email: asha.mohammed@ifrc.org.
- **In Geneva:** Pablo Medina, Operations Quality Assurance; Phone: +41.22.730.43.81; Email: pablo.medina@ifrc.org
- **Regional Logistics Unit (RLU):** Aysegul Bagci; Phone: +971 4 4572993; Email: aysegul.bagci@ifrc.org

For Resource Mobilization and Pledges:

- **In IFRC Africa Zone:** Ed Cooper, Resource Mobilization and Performance and Accountability Coordinator; Johannesburg; Phone: Tel: +27.11.303.9700; Email: ed.cooper@ifrc.org

For Performance and Accountability (planning, monitoring, evaluation and reporting)

- **In IFRC Africa Zone:** Robert Ondrusek, PMER/QA Delegate, Johannesburg; Phone: +27.11.303.9700; Email: robert.ondrusek@ifrc.org

Click [here](#) to return to the title page

How we work

All IFRC assistance seeks to adhere to the Code of Conduct for the International Red Cross and Red Crescent Movement and Non-Governmental Organizations (NGO's) in Disaster Relief and the Humanitarian Charter and Minimum Standards in Disaster Response (Sphere) in delivering assistance to the most vulnerable.

The IFRC's vision is to inspire, encourage, facilitate and promote at all times all forms of humanitarian activities by National Societies, with a view to preventing and alleviating human suffering, and thereby contributing to the maintenance and promotion of human dignity and peace in the world.

www.ifrc.org
Saving lives, changing minds.



The IFRC's work is guided by Strategy 2020 which puts forward three strategic aims:

1. Save lives, protect livelihoods, and strengthen recovery from disaster and crises.
 2. Enable healthy and safe living.
 3. Promote social inclusion and a culture of non-violence and peace.
-

EMERGENCY APPEAL

26/09/2011

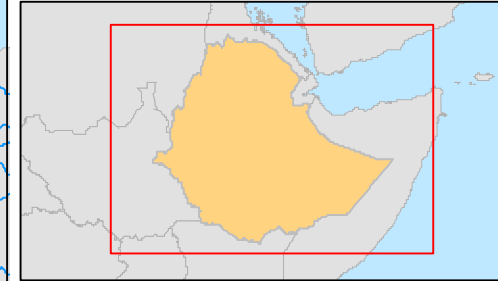
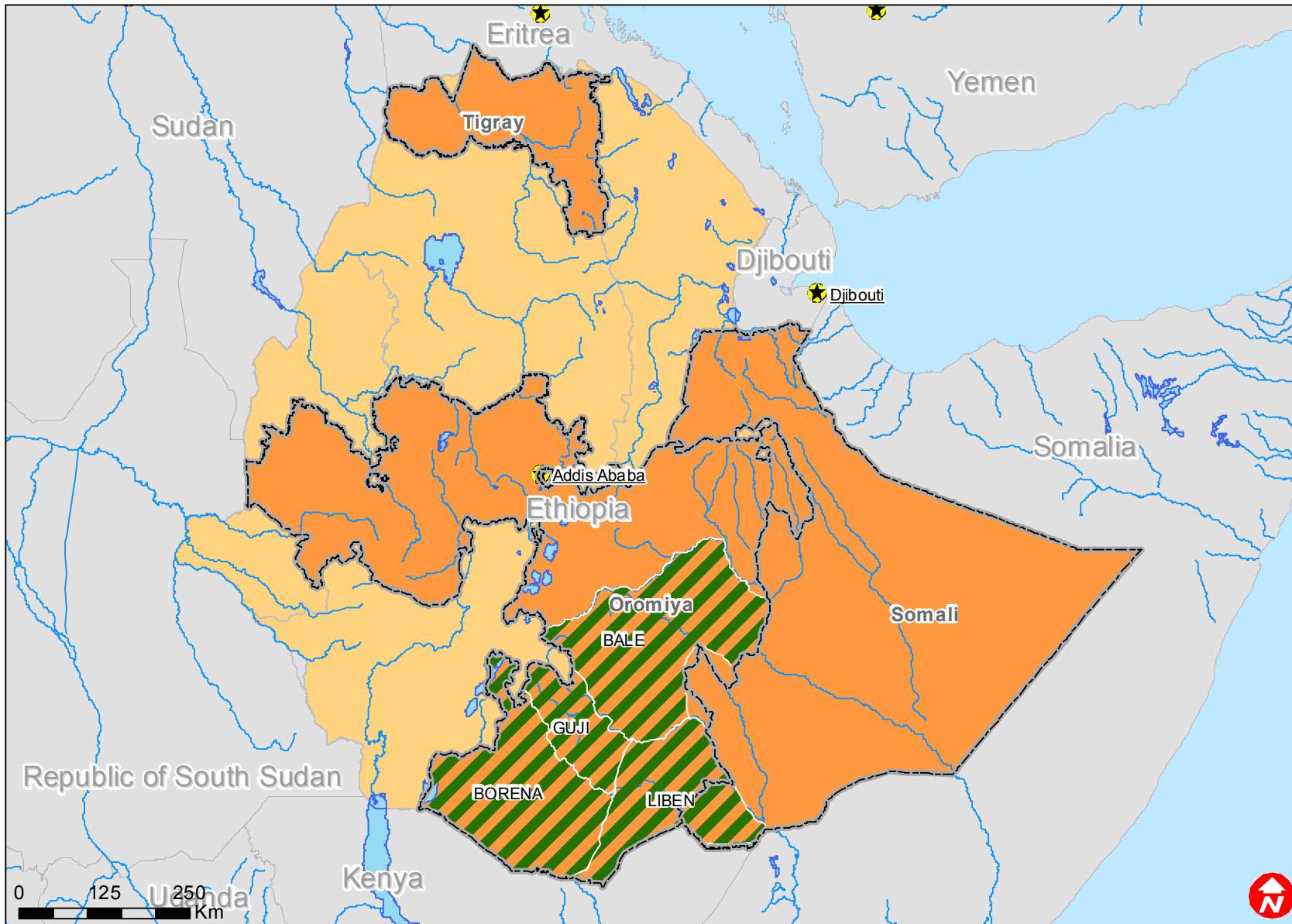
MDRET010

ETHIOPIA DROUGHT

Budget Group	Multilateral Response	Inter-Agency Shelter Coord.	Bilateral Response	Appeal Budget CHF
Clothing & Textiles	350,000			350,000
Food	5,830,370			5,830,370
Water, Sanitation & Hygiene	13,257,760			13,257,760
Emergency Response Units			3,000,000	3,000,000
Cash Disbursements	1,000,000			1,000,000
Total RELIEF ITEMS, CONSTRUCTION AND SUPPLIES	20,438,130	0	3,000,000	23,438,130
Computer & Telecom Equipment	37,800			37,800
Office/Household Furniture & Equipment	19,000			19,000
Medical Equipment				0
Other Machiney & Equipment				0
Total LAND, VEHICLES AND EQUIPMENT	56,800	0	0	56,800
Storage, Warehousing	113,470			113,470
Dsitribution & Monitoring	60,500			60,500
Transport & Vehicle Costs	548,640			548,640
Logistics Services				0
Total LOGISTICS, TRANSPORT AND STORAGE	722,610	0	0	722,610
International Staff	770,000			770,000
National Staff	41,800			41,800
National Society Staff	134,246			134,246
Volunteers				0
Total PERSONNEL	946,046	0	0	946,046
Consultants	63,000			63,000
Professional Fees	40,000			40,000
Total CONSULTANTS & PROFESSIONAL FEES	103,000	0	0	103,000
Workshops & Training	230,170			230,170
Total WORKSHOP & TRAINING	230,170	0	0	230,170
Travel	25,000			25,000
Information & Public Relations	100,000			100,000
Office Costs	61,500			61,500
Communications	39,000			39,000
Financial Charges	4,000			4,000
Other General Expenses	1,131,101			1,131,101
Shared Support Services				0
Total GENERAL EXPENDITURES	1,360,601	0	0	1,360,601
Partner National Societies				0
Other Partners (NGOs, UN, other)				0
Total TRANSFER TO PARTNERS	0	0	0	0
Programme and Supplementary Services Recovery	1,550,728	0	0	1,550,728
Total INDIRECT COSTS	1,550,728	0	0	1,550,728
TOTAL BUDGET	25,408,085	0	3,000,000	28,408,085
-				
TOTAL AVAILABLE RESOURCES	0	0	0	0
NET EMERGENCY APPEAL NEEDS	25,408,085	0	3,000,000	28,408,085



Ethiopia: Drought



-  Affected areas
-  Affected States