


www.ifrc.org  
Saving lives,  
changing minds.

# Emergency appeal

## Tanzania: Drought and Food Insecurity

 International Federation  
of Red Cross and Red Crescent Societies

---

### Emergency appeal n° MDRTZ012 GLIDE n° DR-2011-000145-TZA 28 September 2011

---

This Preliminary Emergency Appeal seeks CHF 1,352,126 in cash, kind, or services to support the Tanzania Red Cross National Society (TRCNS) in delivering assistance to some 20,000 beneficiaries for 12 months, and will be completed by the end of September 2012. A Final Report will be made available by 31 December 2012.

CHF 250,000 was allocated from the International Federation of Red Cross and Red Crescent (IFRC) Disaster Relief Emergency Fund (DREF) to support the related start-up costs of this operation. Unearmarked funds to replenish DREF are encouraged.

**Summary:** Over one million people are food insecure in Tanzania. According to information from the Ministry of Agriculture, Food Security and Cooperatives, a total of 56 administrative districts in 16 regions countrywide are experiencing acute food scarcity. The North Eastern areas of Tanzania are most affected by the drought. According to an assessment conducted by the Tanzania Red Cross National Society, 7 districts in 3 regions have been severely affected and need immediate food assistance. They include Simanjiro District (Manyara Region), Same, Mwanga and Rombo districts (Kilimanjaro Region) and Longido, Ngorongoro and Monduli districts (Arusha Region).



Tanzania Red Cross Volunteers distributing seeds and fertilizer in a Village in Simanjiro District – Arusha region. Photo by Tanzania Red Cross

Based on the situation, this Emergency Appeal responds to a request from the Tanzania Red Cross National Society, and focuses on providing support for only five districts (Ngorongoro, Simanjiro, Same, Rombo and Mwanga) because the other two districts (Longido and Monduli) are already earmarked for government food assistance. Food assistance is urgently needed for the identified 2,760 most food insecure households in the 5 target districts. Out of this, 1,000 households in Kilimanjaro Region will receive unconditional cash grants targeting female-headed households, child headed households, isolated individuals and elderly people. Early recovery activities will also be conducted focusing on improving food production in the affected community through support with agricultural inputs (fertilizer and seeds), farming tools (hoes, machetes, axes and shovels) and training the community on dry land farming and food storage techniques. A total of 4,000 farming households will be reached.

[<Click here to view the attached Emergency Appeal Budget; here to link to a map of the affected area; or here to view contact details>](#)

## The situation

The Horn of Africa Region is currently facing the most serious food and nutrition crisis in the world in terms of both scale and severity. According to the United Nations, over 13 million people are in need of humanitarian assistance in the Horn of Africa (Somalia, Kenya, Ethiopia and Djibouti) and parts of East Africa.

As the Horn of Africa is experiencing a significant food security crisis, drought and food insecurity have also hit a significant number of regions and districts in Tanzania. Over one million people are food insecure in the country. According to information from the Ministry of Agriculture, Food Security and Cooperatives, a total of 56 administrative districts in 16 regions countrywide are experiencing acute food scarcity. The North Eastern areas of Tanzania are most affected by the drought. Pastoralists have been forced to send their livestock toward the south hoping to find better pasture and water while lowland farmers experienced major production losses of maize and beans. Given the well known dependence on rain-fed production, this drought seriously affected household food security, generating an immediate need for food assistance.

Most lowland farmers and pastoralists usually suffer annual food shortage before the rainy season. Drought is chronic in several locations in northern Tanzania; for the past 5 years, crop production has been in many instances below normal; and a major drought in 2009/2010 killed around 65% of the livestock. Further due to the severity of the drought a majority of the affected households have resorted to selling parts of their assets including livestock, bicycles, radios and other movable items as a last resort coping mechanism. This is affecting their livelihoods and hence a need to reinforce their asset ownership status. The fragile food security situation of these populations and this year's drought will aggravate the poor nutritional status characterizing most lowland farmers and pastoralists in the affected areas.

In August 2011, the Tanzanian Red Cross, reacting to the government's announcement that country-wide about one million people in 56 districts in 16 regions were affected by the drought, requested support to start a response operation. The IFRC recommended that an initial food security assessment be conducted by TRCNS to determine needs and appropriate interventions.

At the same time, the government, in collaboration with the UN, the TRCNS and NGOs launched a Comprehensive Food Security and Nutrition Assessment (CFSNA) in order to identify the food and nutrition insecure and vulnerable populations resulting from food availability, accessibility and utilization problems, to establish the magnitude of the problem, and to determine and recommend appropriate interventions for the affected populations. The results of the CFSNA are expected by the end of September 2011.

According to an assessment conducted by the NS 7 districts in 3 regions were confirmed to have been severely affected and in need of immediate food assistance. They include Simanjiro District (Manyara Region), Same, Mwanga and Rombo districts (Kilimanjaro Region) and Longido, Ngorongoro and Monduli districts (Arusha Region). The affected areas are characterized as among the poorest and most food insecure in Tanzania, and are also geographically remote. This appeal seeks assistance for only five districts (Ngorongoro, Simanjiro, Same, Rombo and Mwanga) because the other two districts (Longido and Monduli) are already earmarked for government food assistance. Two livelihood groups are mainly affected by the current situation: lowland agro-pastoralists (mainly in Kilimanjaro Region) and pastoralists (mainly in Arusha and Manyara regions). Most vulnerable groups are characterized by a high reliance on self-produced food and few alternative means of livelihoods. The most food insecure villages following the drought are the lowland villages that rely mostly on farming and agro-pastoral activities, are far away from markets, have poor road access and reduced labour opportunities.

The drought aggravated food insecurity for particularly vulnerable households. This includes female-headed households, child headed households, isolated individuals, and elderly people who have limited labour and few livelihood opportunities. The cash distribution component of this appeal will specifically target these vulnerable members of the community in Kilimanjaro, for asset protection / replacement and meeting diverse household needs.

High food prices are a major hurdle for poor households to access food. The poor harvest, combined with high food demand from Kenya, increased transportation costs, inflation and high agricultural input prices has led to significant increases in the prices of food commodities. There are no reported problems of food availability in major markets at the national level as most of the food required is available in the southern part of the country.

It is anticipated that food insecurity will intensify towards the next rainy season which begins in November to December for short rains and March to May for longer rains. The already scarce maize and beans stocks will be depleted and, as is usual in the lean season, maize prices will rise to even higher levels than the current prices. Casual labour will also be more difficult to find. The situation will be especially troublesome for villages with poor road access. The result will be greater food insecurity in both extent and severity. Hunger could result for the most vulnerable groups. If assistance is not provided soon, the situation is likely to get worse. As cultivation season approaches, many affected farmers will divert their attention to finding food and income. It was

observed that the community had shortage of seed stocks due to previous poor harvest. Normally, the community keeps part of the harvest for seeds. Consequently, affected farmers do not have the time, energy or resources to plant the next harvest. If the problem is not addressed, the negative impacts of the drought will extend well into 2012.

## Coordination and partnerships

The government has put into force a ban on all cereal exports particularly to neighbouring countries as one of the measures aimed at controlling the situation. The government also has mobilized food from the national strategic grain reserve to the worst hit districts for distribution/sale at subsidized prices.

TRCNS is working closely with the Government's Disaster Management Department as well as the Ministry of Agriculture, Food Security and Cooperatives to provide relief assistance to the most vulnerable. The TRCS is a permanent member of the Comprehensive Food Security and Nutrition Assessment (CFSNA) Team.

Spanish Red Cross, a PNS based in-country and in partnership with TRCNS, are currently implementing a one year project in Simanjiro District in Manyara Region with the objective of improving the food security situation of approximately 800 worst hit households (4,000 people) in the targeted communities.

Several UN Agencies are present in Tanzania, including UNDP, UNICEF, WFP, UNFPA, WHO and UNHCR. The World Food Programme (WFP) is undertaking school feeding programmes in targeted areas. UNICEF in Tanzania is in close contact with TRCNS and it is ready for nutrition interventions through TRCNS by way of a standby contingency Project Cooperative Agreement (PCA) for emergency WASH, Nutrition and Health. Apart from the Government interventions (distributing subsidized/free food to some selected communities) to date there are no other partners known to be responding to the situation.

The National Society coordinated closely with French Red Cross who provided technical and financial support in carrying out the initial need assessment.

## Red Cross and Red Crescent action

Following the initial food security assessment in seven food insecure districts across three regions, the IFRC East Africa Regional Representation Office in Nairobi deployed its Disaster Management Coordinator to support the National Society in developing this emergency appeal in response to the identified needs. This appeal seeks assistance for only five districts (Ngorongoro, Simanjiro, Same, Rombo and Mwanza) because the other two districts (Longido and Monduli) are already covered for government food assistance. Below is an outline of the needs and subsequent interventions to be conducted by the National Society.

**Table 1: Needs and proposed intervention to specific target populations in 5 districts**

Cause of the intervention	Type of intervention	Primary target groups	Comments
<b>Immediate action</b>			
Shortage of maize and beans	Between 1-3 months in-kind distribution of food.	Pastoralist and agro-pastoralist in severely affected villages	Targeting the most vulnerable HH in areas which are not yet included in the government response
Lack of seeds for planting	Seed distribution	Low-land farmers in affected villages	All affected small agropastoralists in affected villages.
<b>Medium and long term action</b>			
Reduced purchase power for pastoralists	Livestock improvement programme	Pastoralists in affected villages (focusing on Arusha region)	<ul style="list-style-type: none"> <li>• Water point for livestock</li> <li>• Animal health intervention</li> <li>• Breed improvement</li> <li>• Community awareness focusing on livestock marketing</li> </ul>
Low food availability for	Crop production	Irrigated farms in	• Irrigation schemes

remote communities	improvement programme	highlands	<ul style="list-style-type: none"> <li>• Dry farming techniques</li> <li>• training</li> <li>• Fertilizers distribution</li> </ul>
<b>Further assessment needed</b>			
Monitor (after 2 months) the impact of the government food assistance in all districts			
Quantify the needs for seeds			
Assess the impact on nutrition.			
Monitor the situation in the affected areas as well as in other districts and provinces in order to respond in cases where the situation does not improve.			

## The needs

On the basis of initial needs assessment report by the NS, a total number of 286,000 individuals were established to have been affected by the drought out of which 20,000 have been determined as the most affected and in need of immediate support in terms of food relief and early recovery measures.

**Immediate needs:** Food assistance is urgently needed for the identified 2,760 most food insecure households in Ngorongoro, Simanjiro, Rombo, Same and Mwanga districts. Food distribution to cover two months is proposed for all targeted households. The food aid basket will comprise of cereals (maize grain) and beans. Each individual will receive a monthly ration of 12 Kg of maize grain and 3.6 Kg of beans. Food distribution will be conducted in areas where availability of food items is highly constrained.

**Early recovery needs:** this will focus on improving food production in the affected community through support in the form of agricultural inputs (fertilizer and seeds), non-food items; farming tools (hoes, machetes, axes and shovels) and community training in dry land farming and food storage techniques. This will involve training selected community members from the targeted villages. This process will be facilitated through TRCNS agronomists in collaboration with the government agricultural extension services. The dry farming technique will include sensitizing the community to engage in the cultivation of drought resistance crops, and improvement of local food storage facilities.

In addition, cash distribution to 1,000 households will be conducted in Kilimanjaro Region. This will target families already affected by the 2009/10 drought who have had to sell their assets and who therefore require asset protection / replacement support and assistance in meeting diverse household needs. As part of this early recovery programme, this initiative will go a long way to reforming their asset ownership status. A total of 1,000 households in Kilimanjaro Region will each receive a cash disbursement of CHF 221 for 2 months (CHF 110 per month). This amount has been established for budgetary purposes and is based on past experience. It may be adjusted based on further assessments. This will include female-headed households, child headed households, isolated individuals and elderly people, whose accessibility to food is limited

A further detailed needs assessment is proposed to be conducted to review the operation progress and establish basis for medium to longer term interventions. A decision on the assessment will be communicated through an operations update.

## The proposed operation

The proposed operation will involve the provision of both emergency relief food distribution and cash disbursement to targeted households. The early recovery activities will focus on improvement of food production and hence food availability.

### Relief distributions (food items)

<b>Outcome: Immediate food needs of 2,760 households (13,800 beneficiaries) from Ngorongoro, Simanjiro, Rombo, Same and Mwanga districts are met for 2 months</b>	
<b>Outputs (expected results)</b>	<b>Activities planned</b>
Appropriate food rations are distributed to 2,760 of the most vulnerable in Ngorongoro, Simanjiro, Rombo, Same and Mwanga districts.	<ul style="list-style-type: none"> <li>• Develop beneficiary identification and targeting strategy and registration system to deliver intended assistance.</li> <li>• Local procurement, storage, transport, and distribution of 331.2MT of maize and 99.36MT of beans (13,800 beneficiaries for 2 months).</li> <li>• Monitor distribution of food relief supplies to 2,760 households and control supply movements from point of dispatch to end</li> </ul>

	<p>user.</p> <ul style="list-style-type: none"> <li>• Monitor and evaluate the relief activities and provide reporting on relief distributions.</li> </ul>
--	--

<b>Recovery</b>	
<b>Outcome: Reduced food insecurity among 4,000 affected households</b>	
<b>Agricultural inputs (farming tools, seeds and fertilizer)</b>	
<b>Outputs (expected results)</b>	<b>Activities planned</b>
4,000 households receive seeds, farming tools, and fertilizers in pre-determined quality and quantities.	<ul style="list-style-type: none"> <li>• Registration of earmarked households for agricultural inputs support.</li> <li>• Local procurement, storage and transport of seeds (40,000 kg of maize, 16,000 kg of beans, 4,000 kg of simsim, 5,200 kg of sorghum), 50,000 kg of UREA fertilizer and farming tools including 8,000 pcs of hoes, 4,000 pcs of pangas, 4,000 pcs of axes and 4,000 pcs of shovels.</li> <li>• Community sensitization meetings and training on best agricultural practices.</li> <li>• Develop beneficiary targeting strategy and registration system to deliver intended assistance.</li> <li>• Development of modal farms in selected communities.</li> <li>• Actual distribution of seeds and fertilizers.</li> </ul>
<b>Community capacity building (dry land farming technique trainings)</b>	
1,000 community members from targeted districts are trained on dry land farming techniques	<ul style="list-style-type: none"> <li>• Identification of training participants.</li> <li>• Preparation of training materials.</li> <li>• Conducting training sessions on best agricultural practices, 3 trainings in each districts.</li> <li>• Development of modal farms in selected communities.</li> </ul>
<b>Cash distribution</b>	
Cash transfers are provided to 1,000 of the most vulnerable households in three districts of Kilimanjaro (Rombo, Same and Mwanga districts).	<ul style="list-style-type: none"> <li>• Develop beneficiary identification and targeting strategy and registration system to deliver intended assistance.</li> <li>• Engage relevant stakeholders including banks to facilitate cash transfers.</li> <li>• Disburse funds to 1,000 most vulnerable households (female-headed households, child headed households, isolated individuals and elderly people). Each households will receive CHF 221 for the 2 months.</li> <li>• Community sensitization.</li> <li>• Monitor and evaluate the disbursement.</li> </ul>

## Logistics

**Outcome: Planned activities are implemented following the IFRC procedures to source, procure, store and transport the requested relief items in an efficient, transparent and timely manner for the success of the operation.**

Outputs (expected results)	Activities planned
<ul style="list-style-type: none"> <li>• Well coordinated sourcing and procurement of the requested relief items;</li> <li>• Coordinated delivery to the operational areas, ensuring proper transport and storage of relief items;</li> <li>• Provision of necessary vehicles for the operation and effective fleet management;</li> </ul>	<ul style="list-style-type: none"> <li>• Coordination of timely and cost-efficient sourcing options for the requested relief items.</li> <li>• Ensuring that local, regional and international procurement of goods and services are carried out following IFRC procurement procedures.</li> <li>• Leasing of 2 vehicles through the Federation vehicle rental programme (VRP).</li> <li>• Local procurement of 4 motorcycles, 20 bicycles.</li> <li>• Setting up of necessary fleet management capacities to support the operation.</li> <li>• Maintaining a minimum number of vehicles to support movement of staff/volunteers, food items and non food items during the operation.</li> </ul>

## Communications – Advocacy and Public information

Maintaining a steady flow of timely and accurate information between the field and other major stakeholders is vital for fundraising, advocacy and maintaining the profile of emergency operations. During an operation, communications between affected populations and the Red Cross and Red Crescent, as well as with the media and donors, is an essential mechanism for effective disaster response and the cornerstone to promote greater quality, accountability and transparency. The communications activities outlined in this appeal are aimed at supporting the National Society to improve their communications capacities and develop appropriate communications tools and products to support effective operations.

A detailed plan of action will be developed with the National Society that puts an emphasis on both positive media relations and producing content to communicate the needs of the affected populations and the positive stories of previous/ongoing drought interventions.

**Outcome: The profile and position of the host National Society and the IFRC are enhanced, leading to increased availability of funds and other resources to support this and future emergency operations.**

Outputs (expected results)	Activities planned
<p>Communications products are made available to communities, media and relevant stakeholders.</p>	<ul style="list-style-type: none"> <li>• Development and production of IEC materials for community awareness on dry land farming techniques.</li> <li>• Documentation of programme activities.</li> <li>• Production/printing of visibility materials for volunteers and programme staff; T-shirts, reflector bibs, stickers and Red Cross flags.</li> </ul>

## Capacity of the National Society

The Tanzania Red Cross National Society is auxiliary to the public authorities and has been providing emergency support to affected people during disasters. This operation will contribute to reinforcing National Society branch capacity by providing training to volunteers on beneficiary identification, targeting and distribution, and Sphere standards. Four branch offices in the operation areas will be supported with computers, motorcycles and furniture. The operation will strengthen the branch's ability to coordinate operations as well as in becoming more prepared for future disasters.

## Capacity of the IFRC

The IFRC East Africa Regional Representation Office has the necessary capacities to support the TRCNS in capacity building, food security, and relief. The IFRC presence in Tanzania will be ensured through the deployment of a delegate and finance officer for this operation.

The IFRC's East Africa Regional Representation Office will continue providing necessary technical assistance within the Regional Framework. This will include support in implementation, monitoring and reporting, resource mobilization as well as financial issues. The Africa Zone Office will provide technical expertise upon request to further support the operation.

### Budget summary

See attached budget for details.

Mathias Schmale  
Under Secretary General  
Programme Services Division

Bekele Geleta  
Secretary General

## Contact information

### For further information specifically related to this operation please contact:

- **In Tanzania:** Tanzania Red Cross National Society (Mr. Joseph Kimaryo, Disaster Management Director), phone: +255 713.325.042; email: [utouh2009@yahoo.com](mailto:utouh2009@yahoo.com)
- **In Kenya:** IFRC East Africa Regional Representation; Alexander Matheou, Regional Representative, East Africa, Nairobi, phone: +254.20.283.5124; fax: 254.20.271.27.77; email: [alexander.matheou@ifrc.org](mailto:alexander.matheou@ifrc.org)
- **IFRC Africa Zone:** Dr Asha Mohammed, Head of Operations, Johannesburg; Phone: +27 11 3039700; Email: [asha.mohammed@ifrc.org](mailto:asha.mohammed@ifrc.org).
- **In Geneva:** Pablo Medina, Operations quality assurance; Phone: +41.22.730.43.81; Email: [pablo.medina@ifrc.org](mailto:pablo.medina@ifrc.org)
- **Regional Logistics Unit (RLU):** Aysegul Bagci; Phone: +971 4 4572993; Email: [aysegul.bagci@ifrc.org](mailto:aysegul.bagci@ifrc.org)

### For Resource Mobilization and Pledges:

- **In IFRC Zone:** [pierre.kremer@ifrc.org](mailto:pierre.kremer@ifrc.org)

### For Performance and Accountability (planning, monitoring, evaluation and reporting)

- **In IFRC Africa Zone:** Robert Ondrusek, PMER/QA Delegate, Johannesburg; Phone: +27.11.303.9700; Email: [robert.ondrusek@ifrc.org](mailto:robert.ondrusek@ifrc.org)

---

æ

Click here

1. Emergency Appeal budget and map [below](#)
2. Click [here](#) to return to the title page

---

## How we work

All IFRC assistance seeks to adhere to the Code of Conduct for the International Red Cross and Red Crescent Movement and Non-Governmental Organizations (NGO's) in Disaster Relief and the Humanitarian Charter and Minimum Standards in Disaster Response (Sphere) in delivering assistance to the most vulnerable.

The IFRC's vision is to inspire, encourage, facilitate and promote at all times all forms of humanitarian activities by National Societies, with a view to preventing and alleviating human suffering, and thereby contributing to the maintenance and promotion of human dignity and peace in the world.

[www.ifrc.org](http://www.ifrc.org)  
Saving lives, changing minds.



The IFRC's work is guided by Strategy 2020 which puts forward three strategic aims:

1. Save lives, protect livelihoods, and strengthen recovery from disaster and crises.
  2. Enable healthy and safe living.
  3. Promote social inclusion and a culture of non-violence and peace.
-

# EMERGENCY APPEAL

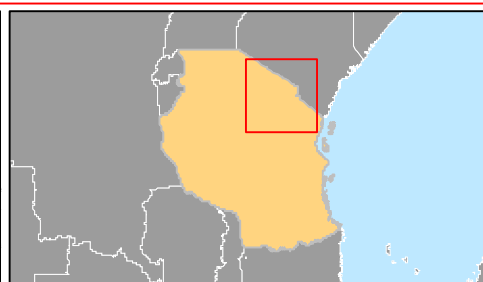
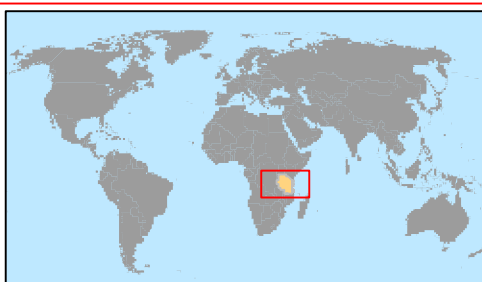
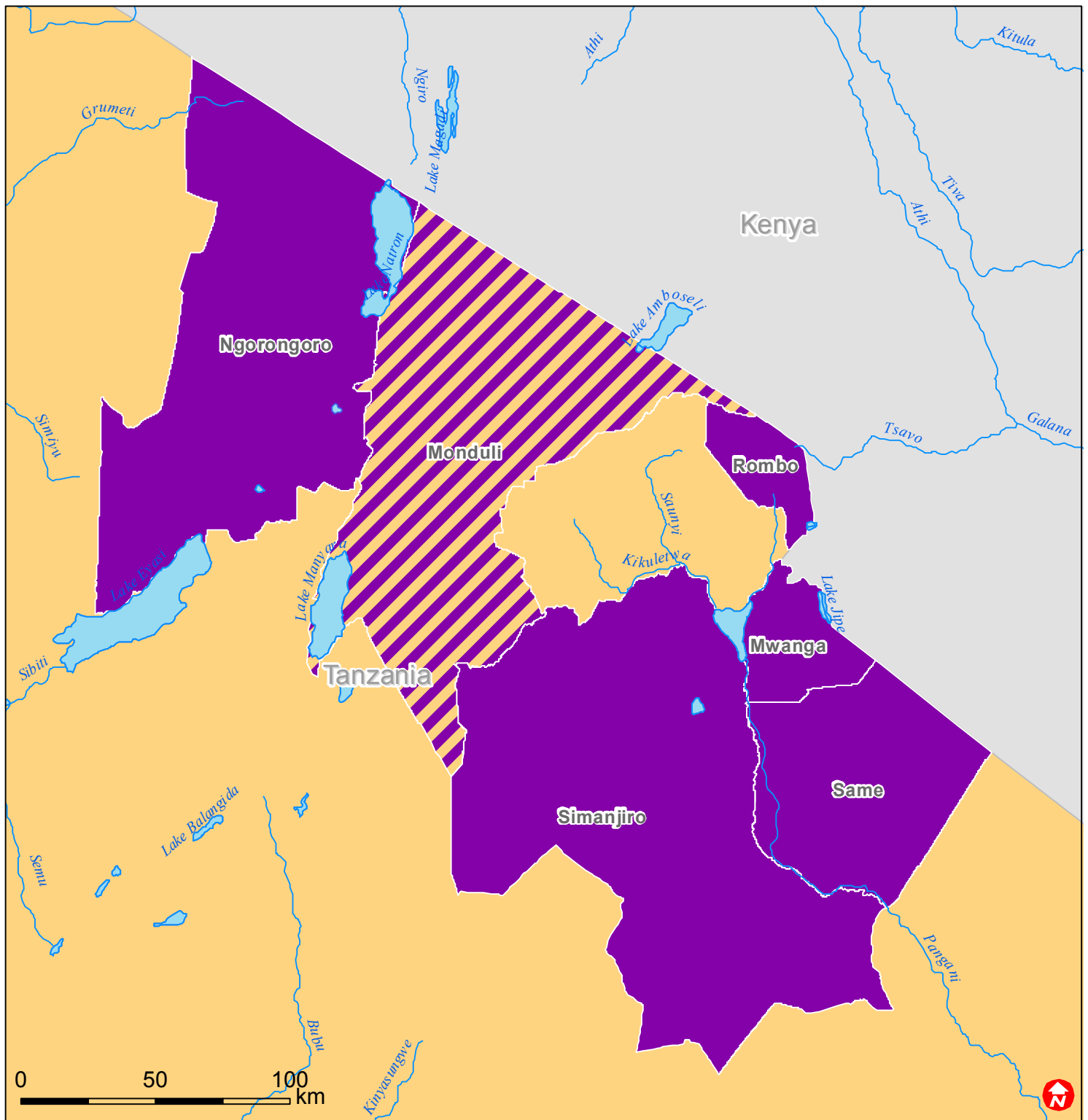
27/09/2011



MDRTZ012

Budget Group	Multilateral Response	Inter-Agency Shelter Coord.	Bilateral Response	Appeal Budget CHF
Shelter - Relief	1,000			1,000
Shelter - Transitional				0
Construction - Housing				0
Construction - Facilities				0
Construction - Materials	33,333			33,333
Clothing & Textiles				0
Food	185,472			185,472
Seeds & Plants	239,733			239,733
Water, Sanitation & Hygiene				0
Medical & First Aid				0
Teaching Materials				0
Ustensils & Tools	93,333			93,333
Other Supplies & Services	243,150			243,150
Emergency Response Units				0
Cash Disbursements				0
<b>Total RELIEF ITEMS, CONSTRUCTION AND SUPPLIES</b>	<b>796,022</b>	<b>0</b>	<b>0</b>	<b>796,022</b>
Land & Buildings				0
Vehicles Purchase	15,333			15,333
Computer & Telecom Equipment	6,667			6,667
Office/Household Furniture & Equipment				0
Medical Equipment				0
Other Machinery & Equipment				0
<b>Total LAND, VEHICLES AND EQUIPMENT</b>	<b>22,000</b>	<b>0</b>	<b>0</b>	<b>22,000</b>
Storage, Warehousing	2,400			2,400
Distribution & Monitoring	47,000			47,000
Transport & Vehicle Costs	17,000			17,000
Logistics Services	47,400			47,400
<b>Total LOGISTICS, TRANSPORT AND STORAGE</b>	<b>113,800</b>	<b>0</b>	<b>0</b>	<b>113,800</b>
International Staff	87,500			87,500
National Staff	75,000			75,000
National Society Staff	107,480			107,480
Volunteers				0
<b>Total PERSONNEL</b>	<b>269,980</b>	<b>0</b>	<b>0</b>	<b>269,980</b>
Consultants				0
Professional Fees				0
<b>Total CONSULTANTS &amp; PROFESSIONAL FEES</b>	<b>0</b>	<b>0</b>	<b>0</b>	<b>0</b>
Workshops & Training	22,933			22,933
<b>Total WORKSHOP &amp; TRAINING</b>	<b>22,933</b>	<b>0</b>	<b>0</b>	<b>22,933</b>
Travel	8,200			8,200
Information & Public Relations	20,667			20,667
Office Costs	7,000			7,000
Communications	4,000			4,000
Financial Charges	5,000			5,000
Other General Expenses				0
Shared Support Services				0
<b>Total GENERAL EXPENDITURES</b>	<b>44,867</b>	<b>0</b>	<b>0</b>	<b>44,867</b>
Partner National Societies				0
Other Partners (NGOs, UN, other)				0
<b>Total TRANSFER TO PARTNERS</b>	<b>0</b>	<b>0</b>	<b>0</b>	<b>0</b>
Programme and Supplementary Services Recovery	82,524	0	0	82,524
<b>Total INDIRECT COSTS</b>	<b>82,524</b>	<b>0</b>	<b>0</b>	<b>82,524</b>
<b>TOTAL BUDGET</b>	<b>1,352,126</b>	<b>0</b>	<b>0</b>	<b>1,352,126</b>
<b>Available Resources</b>				
Multilateral Contributions				0
Bilateral Contributions				0
<b>TOTAL AVAILABLE RESOURCES</b>	<b>0</b>	<b>0</b>	<b>0</b>	<b>0</b>
<b>NET EMERGENCY APPEAL NEEDS</b>	<b>1,352,126</b>	<b>0</b>	<b>0</b>	<b>1,352,126</b>



# Tanzania: Food insecurity



-  Severely affected districts
-  Districts covered by this appeal