

INFORMATION BULLETIN



International Federation of Red Cross and Red Crescent Societies
Fédération Internationale des Sociétés de la Croix-Rouge et du Croissant-Rouge
Federación Internacional de Sociedades de la Cruz Roja y de la Media Luna Roja
الاتحاد الدولي لجمعيات الصليب الأحمر والهلال الأحمر

INDIA: ASSAM FLOODS

27 June 2003

Information Bulletin N° 1/2003

Disaster Relief Emergency Fund (DREF) Allocated: N/A

The Federation's mission is to improve the lives of vulnerable people by mobilizing the power of humanity. It is the world's largest humanitarian organization and its millions of volunteers are active in over 180 countries.

For more information: www.ifrc.org

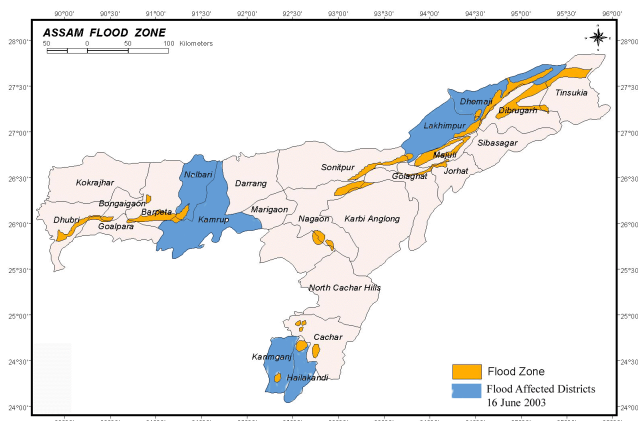
In Brief

This document is being issued for information only. The Federation is not seeking any funding or other assistance from donors for this operation at this time.

The Situation

Assam, the northeastern state of India, experienced the first phase of flash floods due to heavy rains from 13 June, with downpours in the catchments of Bhutan and Arunachal Pradesh leading to flooding of most low lying areas in the districts of Hailakandi, Dhemaji, Karimganj, Barpeta, Nalbari, Darrang, Dhubri and Kamrup. Most of the villages under these districts have been affected due to several breaches in the local dykes and many houses have been washed away, thereby rendering up to 400,000 people homeless.

A Central Water Commission bulletin quoted "the Brahmaputra River was showing a rising trend all along its course, with at least eight of its major tributaries flowing above the danger level at various places. The Brahmaputra and its tributaries would continue to rise in the next 48 hours".



Disclaimer: This map was collated based on the information compiled by the Ministry of Urban Development and Poverty Alleviation. UNICP has not verified the accuracy of information of the Map. Source: BMRPC, India

The flood situation in the various parts of the state remained serious as torrential rains resulted in rising water levels of rivers. Situation reports received from the following Red Cross district branches indicate:

Dhemaji: On 12 June floodwaters of the Jidhal River breached the north frontier railway line in two places near Chamarajan, Kekurigaon villages. National Highway no. 52 was also washed out by floodwaters.

Some 57 villages have been affected in the district, with a population of 22,358. No deaths have been reported but a loss of crop area measuring 137 hectares approximately has been reported. The Government has released 7,500 kilograms of dal, rice

and other food products to meet the immediate needs of the victims.

Hailakandi: the flood situation of Barak Valley is critical. Though the flood level is receding in the villages of Katlicherra circle, it is rising in the Panchgram and Katakhal areas. More than 100 families have been shifted to secure places; raised platforms have been used as relief shelters. About 150,000 people from 131 villages have

India Floods: Assam; Information Bulletin no. 01

been affected. No loss of human life is being reported, but hundreds of acre of paddy fields have been affected. People in the camps and shelters are suffering from a scarcity of drinking water and proper sanitation systems. Food, medicine and chlorine tablets have been distributed in the villages and relief shelter's run by the Government.

Karimganj: In Karimganj District, floodwaters of the Kushiya and Singla Rivers affected the Patharkandi, Sonakuria, Kalkalighat area affecting 10 thousand people in 47 villages of these districts. No loss of human life is reported, but there have been reports of cattle being lost. The local Red Cross Society is helping the local authority in rescue and relief operation.

Barpeta: Barpeta District has been inundated. Some portion of the embankment of the Kaldia and Pahumara Rivers were washed away, and floodwaters submerged Helena Bazar, Rampur, Bhaluki, Garchowk, Saderi Kotharali, Madan Rowta main road in Rehabari. 40 villages including Ghuramara, Balapara, Majuri, Kochiga, Rupdia, Kachakuri, Kurubaha, Majgaon, Bharegaon, Bamunpara, Bongalipara, Bhoukamari, Dumuria, etc are completely under flood water.

Nalbari: 70 villages with a population of about 50,000 have been affected. The road communication at Kaithalkuchi, Barama, Subhankata is disrupted due to washing away of the approaches of the bridge which linked these villages.

Darrang: Water levels of the Brahmaputra River rose above danger level. Four villages with a population of about 1,000 people, land area of 267 hectares and crop area of 254 hectares have been affected in the. 19 houses have been damaged completely and 45 houses damaged partially. Relief centre have been opened and the Red Cross DP volunteers are working with the local authorities in rescue and relief operation.

Dhubri: Due to the severe erosion of a mud-dam at Tumni under South Salmara Circle, the water has flooded near-by villages in Tumni. Affected families of Tumni, Saikhowa and Sursuri villages have been shifted to safer places.

Kamrup: In the Rangia sub division of Kamrup district 5 villages covering a land area of 300 hectares have been affected by flooding. One bamboo bridge over the Puthimari River at Niz Kaurbaha has been washed away. According to government sources around 2,666 hectares of area has been affected, 1,688 hectares of crop area has been affected along with 19 houses fully damaged and 816 partially damaged.

The government of Assam has responded by distributing the following items in the affected areas:

Item	metric tonne
Rice	29.8
Dal	4.2
Salt	1.2

Red Cross and Red Crescent action

The Red Cross disaster preparedness volunteers have been using local boats and rafts in their rescue and relief operation. Two relief camps have been organized in the Dhemaji town providing safe drinking water and cooked food to more than 100 families. Shifting of marooned people is going on and more temporary relief centers are to be opened in the coming days.

The Karimganj district branch of Red Cross is helping the local authority in rescue and relief operation in the district. Relief camps have been organized by the Red Cross community based disaster preparedness (CBDP) volunteer's in coordination with the local authorities in Barama under Nalbari district. Raised platform constructed by Red Cross in Nalbari district during the 2002 Flood Relief Operation has been used as relief shelter by flood affected families in the district.

India Floods: Assam; Information Bulletin no. 01

The district branches of Dheamji, Karimganj, Nalbari, Darrang and Dhubri is providing locally collected flatted rice, molasses (jaggery), emergency ration and shelter materials etc.

Indian Red Cross CBDP volunteers are rendering relief and rescue services to the marooned people in Kamrup. The national headquarters along with Federation and the Assam state branch are continuously monitoring the situation.

For a full description of the National Society profile, see www.ifrc.org

For further details please contact (field to provide/complete relevant contact details):

- *Indian Red Cross in New Delhi; Phone 23716424; Fax 2377454; email indcross@nde.vsnl.net.in*
- *India Delegation/ Azmat Ullah, HOD, New Delhi; Phone 23324201; Fax 23324235; email ifrcin65@ifrc.org*
- *Tatjana Tasic, Federation Desk Officer, Phone 41 22 730 42 72; Fax 41 22 733 0395; email tatajana.tasic@ifrc.org*
- *Regional Delegation/ Bob McKerrow, HORD, ,New Delhi; Phone 26568775; Fax 26857567; email ifrcin02@ifrc.org*

All International Federation Operations seek to adhere to the Code of Conduct and are committed to the Humanitarian Charter and Minimum Standards in Disaster Response (SPHERE Project) in delivering assistance to the most vulnerable.

For support to or for further information concerning Federation operations in this or other countries, please access the Federation website at <http://www.ifrc.org>

For longer-term programmes, please refer to the Federation's Annual Appeal.