

INFORMATION BULLETIN



International Federation of Red Cross and Red Crescent Societies
Fédération Internationale des Sociétés de la Croix-Rouge et du Croissant-Rouge
Federación Internacional de Sociedades de la Cruz Roja y de la Media Luna Roja
الاتحاد الدولي لجمعيات الصليب الأحمر والهلال الأحمر

INDONESIA: FLASH FLOODS AND LANDSLIDES

9 January 2006

The Federation's mission is to improve the lives of vulnerable people by mobilizing the power of humanity. It is the world's largest humanitarian organization and its millions of volunteers are active in over 183 countries.

In Brief

This Bulletin (no. 02/2006) is being issued for information only, and reflects the status of the situation and information available at present. The Federation is not seeking funding or other assistance from donors for this operation at this time.

For further information specifically related to this operation please contact:

- Indonesian Red Cross (PMI): Irman Rachman (head of disaster management division); Mobile: +62 81 1956377
- Federation country delegation in Indonesia: Latifur Rahman (disaster management delegate); email: latifur.rahman@ifrc.org; Mobile: +62 81 1826614; phone: +62 21 79191841, fax: +62 21 79180905.
- Federation country delegation in Indonesia: Arnulv Torbjornsen (head of delegation); email: arnulv.torbjornsen@ifrc.org; phone: +62 21 79191841, fax: +62 21 79180905.
- Federation secretariat in Geneva: Josse Gillijns, Federation Secretariat, Geneva; email: josse.gillijns@ifrc.org; phone: +44 22 7304224, fax: +41 22 7330395.

All International Federation assistance seeks to adhere to the [Code of Conduct for the International Red Cross and Red Crescent Movement and Non-Governmental Organisations \(NGO's\) in Disaster Relief](#) and is committed to the [Humanitarian Charter and Minimum Standards in Disaster Response \(Sphere\)](#) in delivering assistance to the most vulnerable.

For longer-term programmes in this or other countries or regions, please refer to the Federation's Annual Appeal. For support to or for further information concerning Federation programmes or operations in this or other countries, or for national society profiles, please also access the Federation's website at <http://www.ifrc.org>

The Situation

Heavy showers and thunderstorms continue across the region, with Indonesia's Meteorology and Geophysics Agency forecasting further strong winds and torrential downpours. Ensuing floods and landslides have thus far killed a total of 153 people. Flood warnings have been issued for metropolitan Jakarta, which is prone to inundation as 40 per cent of the city is below sea level and 13 major rivers flow through the urban area. It is estimated that three consecutive days of rainfall over Jakarta at 50 mm/day may result in flooding similar to the 2002 event that seriously disrupted the capital's commerce for a month.

Following New Year's Day flash floods and landslides in Jember district of East Java province, the number of displaced people stands at 7,781, according to Satlak (the provincial disaster



Satgana volunteers of PMI deliver tarpaulins, hygiene kits, sleeping mats, and sarongs to affected people in Jember district, East Java province of Indonesia.

management agency) figures. These internally displaced persons have been provided with temporary accommodation in 43 evacuation sites located in Panti, Sukorambi, Kaliwates, Arjasa, and Patrang sub-districts, as well as in Jember city. Initial health assessments have determined that an approximate 10 per cent of Jember's displaced population are suffering from diarrhea and respiratory-related illnesses, with 38 flood victims receiving treatment at Jember's Soebandi hospital.

To date, 79 bodies have been recovered across the affected area, with search and rescue (SAR) operations being expanded by helicopter to the slopes of Mount Argopuro in the north of the district.

Meanwhile, a second landslide buried Sijeruk village in Banjarnegara district on Thursday, 5 January 2006, covering 102 out of the village's 184 houses with mud, rocks and debris. Of the total population of 655, the death toll in Sijeruk stands at 74, with 525 villagers accounted for and housed in temporary shelters. A further 13 have been hospitalized, and 43 people are known to be working elsewhere in the region. Given the small, contained area of Sijeruk, extensive search and rescue operations were completed and subsequently called off on Saturday, 7 January.

Red Cross and Red Crescent action

Jember District, East Java

More than one hundred Satgana volunteers (Indonesian Red Cross field action team) continue to support the search and rescue efforts. Satgana volunteers have also set up five Indonesian Red Cross (Palang Merah Indonesia or PMI) field kitchens and are providing hot meals to the displaced population.

Tarpaulin, standard hygiene kits, sleeping mats, and sarongs have been distributed to 472 households, covering all the isolated areas in the affected sub-districts of Jember, where homes were affected but not evacuated. Relief distributions continue in Jember in order to reach the entire displaced population.

Banjarnegara District, Central Java

More than fifty Satgana volunteers were involved in SAR activities and evacuation until recovery operations ended on Saturday. The local branch continues to provide ready food to the displaced population through two PMI field kitchens.

The PMI provided the necessary body bags from existing disaster preparedness stocks. A PMI emergency health post has been set up to provide primary health care service. Tarpaulins, hygiene kits, sleeping mats and clothing have been distributed to all displaced families.

PMI National Office

The PMI headquarters' emergency operation room maintains its 24-hours/seven-days duty, with communication ongoing between PMI national office, East and Central Java chapters, and Jember and Banjarnegara branches. Pending detailed assessment results, further resources remain on standby, including shelter supplies, water and sanitation equipment, medical supplies and health assistance.

Coordination

In both Jember and Banjarnegara, coordination is ongoing with local government and other stakeholders, as well as detailed assessment to determine further needs (i.e. short- and long-term requirements in terms of food, shelter, health, water and sanitation and livelihood). The branches in both districts continue their standard coordination and communication with their chapter offices and with the PMI national office.

National office coordination and information sharing is also ongoing with the government's disaster management agencies, Federation counterparts, donors and other stakeholders. Donations received thus far to support the emergency and recovery operation include an Australian government AusAID contribution of AUD 200,000 (CHF 191,770) and a US government USAID grant of USD 50,000 (CHF 63,537).

[Infographic map below, click here to return to the title page or contact information.](#)



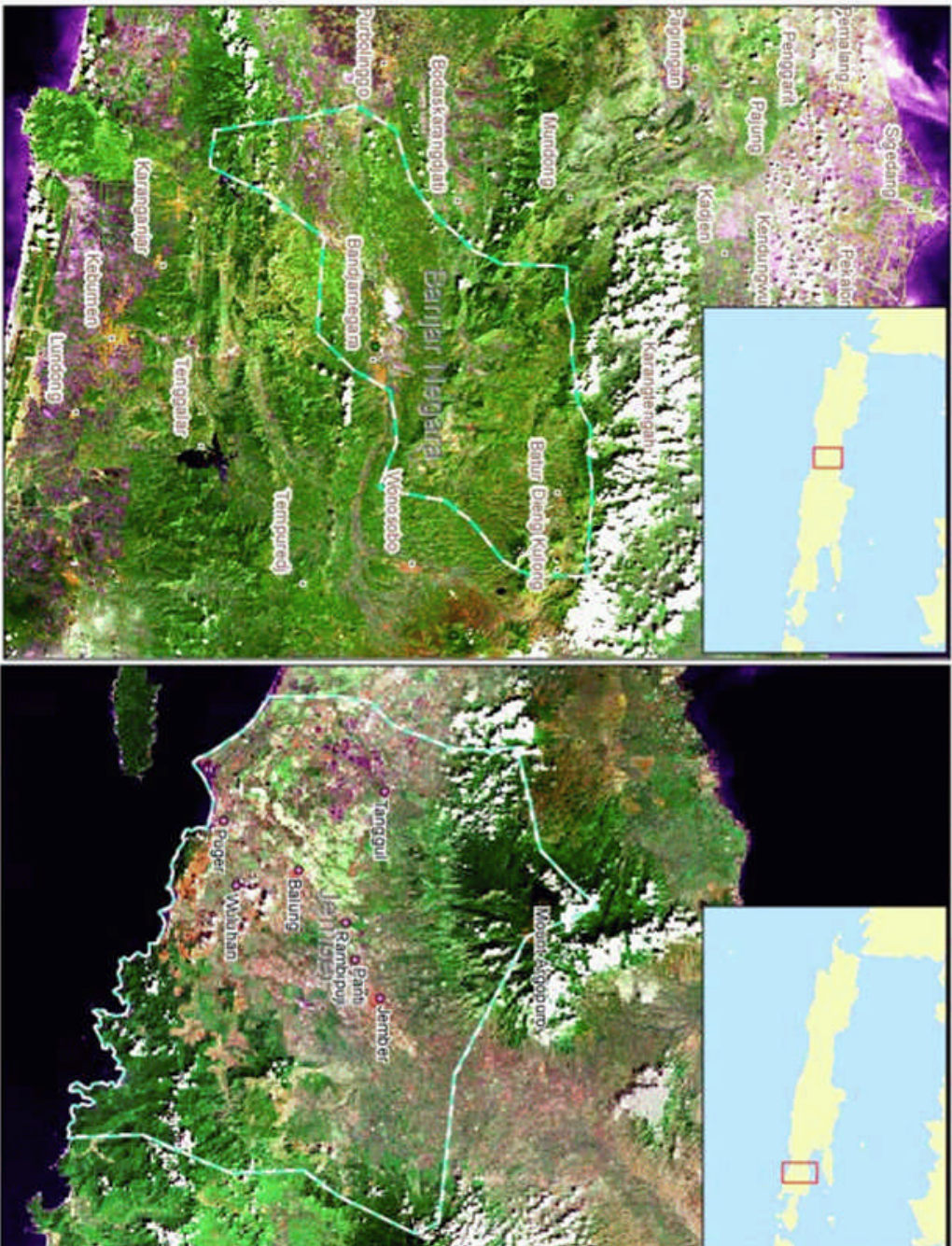
International Federation of Red Cross and Red Crescent Societies
Fédération Internationale des Sociétés de la Croix-Rouge et du Croissant-Rouge
Federación Internacional de Sociedades de la Cruz Roja y de la Media Luna Roja
الاتحاد الدولي لجمعيات الصليب الأحمر والهلال الأحمر

Information bulletin 02/2006

Issued 9 January 2006

FL-2006-000001-IDN & LS-2006-000003-IDN

Indonesia: Flash floods and landslides



Floods and landslides have killed a total of 153 people in East Java and Central Java province since new year's day.

In Jember district of East Java, 79 people have died, while 7,781 displaced people have been relocated to 43 evacuation sites spread across Partti, Sukrombi, Kaliwates, Arjasa and Patrang sub-districts. 10% of the displaced are suffering from diarrhoea and respiratory-related diseases. Search and rescue operations have expanded to the slopes of Mount Argopuro in the north of Jember.

More than 100 PMI Saigana volunteers are supporting search and rescue efforts and have set up five PMI field kitchens to serve the displaced. They have distributed relief to 472 households.

In Central Java, a second landslide buried Sijeruk village in Banjarnegara district on 5 January 2006. It has killed 74 out of the 655 affected population and covered 102 of the village's 184 houses. Rescue operations were completed 7 January 2005. More than fifty PMI Saigana volunteers have been involved in search and rescue and evacuation activities until operations ended. PMI provided necessary body bags from DP stocks, set up PMI health posts and distributed relief to affected families. National - The PMI national office maintains communication and coordination functions on a 24 h basis. In both Jember and Banjarnegara, coordination is on-going with local government and other stakeholders, as well as detailed assessment to determine further needs

The maps used do not imply the expression of any opinion on the part of the International Federation of Red Cross and Red Crescent Societies or National Societies concerning the legal status of a territory or of its authorities.

Map data sources: ESRI, GIST