

DREF operation



International Federation
of Red Cross and Red Crescent Societies

Brazil: Floods

DREF Bulletin n° MDRBR004
FL-2008-000234-BRA
3 December 2008

The International Federation's Disaster Relief Emergency Fund (DREF) is a source of un-earmarked money created by the Federation in 1985 to ensure that immediate financial support is available for Red Cross and Red Crescent response to emergencies. The DREF is a vital part of the International Federation's disaster response system and increases the ability of national societies to respond to disasters.

CHF 170,000 (USD 141,078 or EUR 110,924) has been allocated from the Federation's Disaster Relief Emergency Fund (DREF) to support the Brazilian Red Cross (BRC) in delivering immediate assistance to some 2,000 families (10,000 people). Unearmarked funds to reimburse DREF are encouraged.

Summary: Heavy rainfall in the southern part of Brazil led to severe flooding displacing more than 78,707 people in the state of Santa Catarina. The Brazilian Red Cross has initiated a national fundraising campaign to address the needs of those affected.

With this DREF support the operation will focus on providing assistance to the BRC through the provision of hygiene and cleaning kits to 2,000 of the most affected families.

This operation is expected to be implemented over two months, and will therefore be completed by 3 February 2009; a Final Report will be made available three months after the end of the operation (by 3 May 2009).

[<Click here for the DREF budget, or here for contact details, or here to view the map of the affected area>](#)



Severe floods affecting the state of Santa Catarina, Brazil. Source: Brazilian Red Cross

The situation

The combination of a cold and warm front caused heavy rains in the estate of Santa Catarina, in the southern region of Brazil. In addition, intense winds coming from the ocean intensified the humidity in the area at the same time as a low pressure system intensified the rains according to the Centre of Weather Forecast and Climate Studies (Centro de Previsao do Tempo e Estudos Climaticos - CPTEC). Subsequently, rains overflowed rivers and caused mudslides, which in turn damaged roads and interrupted electric and water supply in the area. According to the National Secretariat of the Civil Defense (Secretaria Nacional de Defesa Civil – SNDC) 47 municipalities were affected in the state of Santa Catarina.

In three days, more than 500 mm of rainwater were accumulated, the normal quantity for a four months period and a cold front is forecasted to remain above the area for two more days, extending the risk of landslides and mudslides.

Heavy rainfall in the area of Santa Catarina led to severe flooding, affecting at least 78,707 people by damaging or destroying their homes and goods. The crisis has so far killed 116 people, and at least 31 are missing. 27,410 people are living in temporary shelters, and 51,297 people are living with other family members and neighbours. Also, at least five federal roads are obstructed due to landslides or are partially damaged. In some cities, the Armed Forces have established a curfew due to lootings during the previous days.

The threat of an increase in leptospirosis cases, due to the contact with dirty water in Santa Catarina, is a cause of concern for the authorities. The Health Secretariat of the State already forecast an increase of 30 percent of cases for the next year.

The most affected area is the Complejo del Baúl (Luiz Alves, Islotes, Gaspar and Baúl), with at least 5,000 people affected. People of these areas are isolated, without electricity and with problems availability of safe water. The access to these places is at the moment only possible by air and the landslides risk continues.

An estimated 63,965 people have been stranded by flood water in six municipalities, including Sao Bonifacio, Sao Joao da Bastida, Rio dos Cedros, Garuva, Itapoa and Benedito Novo. The national government has declared a state of emergency in nine affected municipalities: Gaspar, Rio dos Cedros, Nova Trento, Camboriu, Benedito Novo, Pomerode, Luis Alves, Itajai and Rodeio.



Coordination and partnerships

The Brazilian Red Cross is closely coordinating efforts with the SNDC, the Brazilian Armed Forces and other state and municipal authorities to avoid duplication of efforts. Coordination with local authorities and civil defence takes place both at state and municipal level. Internally, the national relief department of the BRC is providing direct support to the local branch in Santa Catarina.

The International Federation through its Pan American Disaster Response Unit (PADRU) and the Regional Representation Office for the Southern Cone in Buenos Aires have been coordinating relief activities with the Brazilian Red Cross.

Red Cross and Red Crescent action

The Brazilian Red Cross volunteers and staff have been working since the onset of the disaster to provide relief assistance to the affected people. The Brazilian Red Cross is implementing a nationwide fundraising campaign to collect donations of relief items and dispatch them to the Santa Catarina Red Cross branch. In addition, the BRC has opened a specific bank account, under the supervision of the Judiciary, for donations for the relief of victims of Santa Catarina.

Three NIT members were deployed to the affected state of Santa Catarina and will carry out necessary local evaluations to determine further needs.

Thanks to the generous support of the civil population and the private sector, up to 2 December the BRC Sao Paulo branch has collected more than 168 tons in donations and dispatched them to Santa Catarina. The BRC branches of the states of Brasilia, Ceara and Rio de Janeiro and in the municipality of Barra Mansa are also taking part in the national fundraising campaign. These branches have established collection points and have trained volunteers assisting in the collection of donations. Items donated to the branches include water, non-perishable food, clothes, medications, mattresses and pillows.

Moreover, the BRC branch in the municipality of Santa Maria dispatched during 26 – 27 November two trucks with drinking water, food, mattresses and cleaning kits to affected families. As of 1 December 2008, the Red Cross branch had delivered 15,360 litres of water and 16,500 kg of other relief items.

The International Federation of Red Cross and Red Crescent Societies has already sent a delegate to support the actions of the Brazilian Red Cross local branch in Santa Catarina.

The needs

Immediate needs: The Brazilian Red Cross branch of Santa Catarina has identified as principal needs safe water, blankets and mattresses, non-perishable food items, hygiene and cleaning kits, clothes and disposable diapers to be distributed to the people affected by the disaster. At the moment, the government, SNDC and civil population with their donations and efforts are addressing part of the immediate needs.

The proposed operation

Damage and needs assessments are still ongoing, and more detailed information will become available shortly. However, preliminary assessments have already led to a plan of action to assist 2,000 families through the provision of hygiene and cleaning kits and the deployment of a Regional Intervention Team (RIT) member.

Both kits will contribute to prevent the spread of communicable and water borne diseases.

Relief distributions (food and basic non-food items)

Objective: 2,000 families will benefit from the provision of hygiene and cleaning kits to recover from the effects of the floods.	
Expected results	Activities planned
Emergency needs assessments are completed. 2,000 families received essential hygiene and cleaning kits.	<ul style="list-style-type: none"> Conduct rapid emergency needs and capacity assessments. Develop beneficiary targeting strategy and registration system to deliver intended assistance. Distribute relief supplies and control supply movements from point of dispatch to end user. Monitor and evaluate the relief activities and provide reporting on relief distributions.

The tables below show the content of the hygiene kits and cleaning kits which will be distributed to each family (five members) to cover their needs for 30 days:

Hygiene Kit	
Item	Quantity
Soap (250g)	5 units
Adult Shampoo (250ml)	5 bottles
Toothbrush	5 units
Toothpaste	5 tubes
Toilet paper	12 rolls
Sanitary towel (8 units pack)	3 units
Disposable razor	5 units
Men's comb	1 unit
Women's comb	2 unit

Cleaning Kit	
Item	Quantity
Broom	1
Rake	1
Plastic bucket	1
Sponge	1
Detergent (1kg)	1

How we work

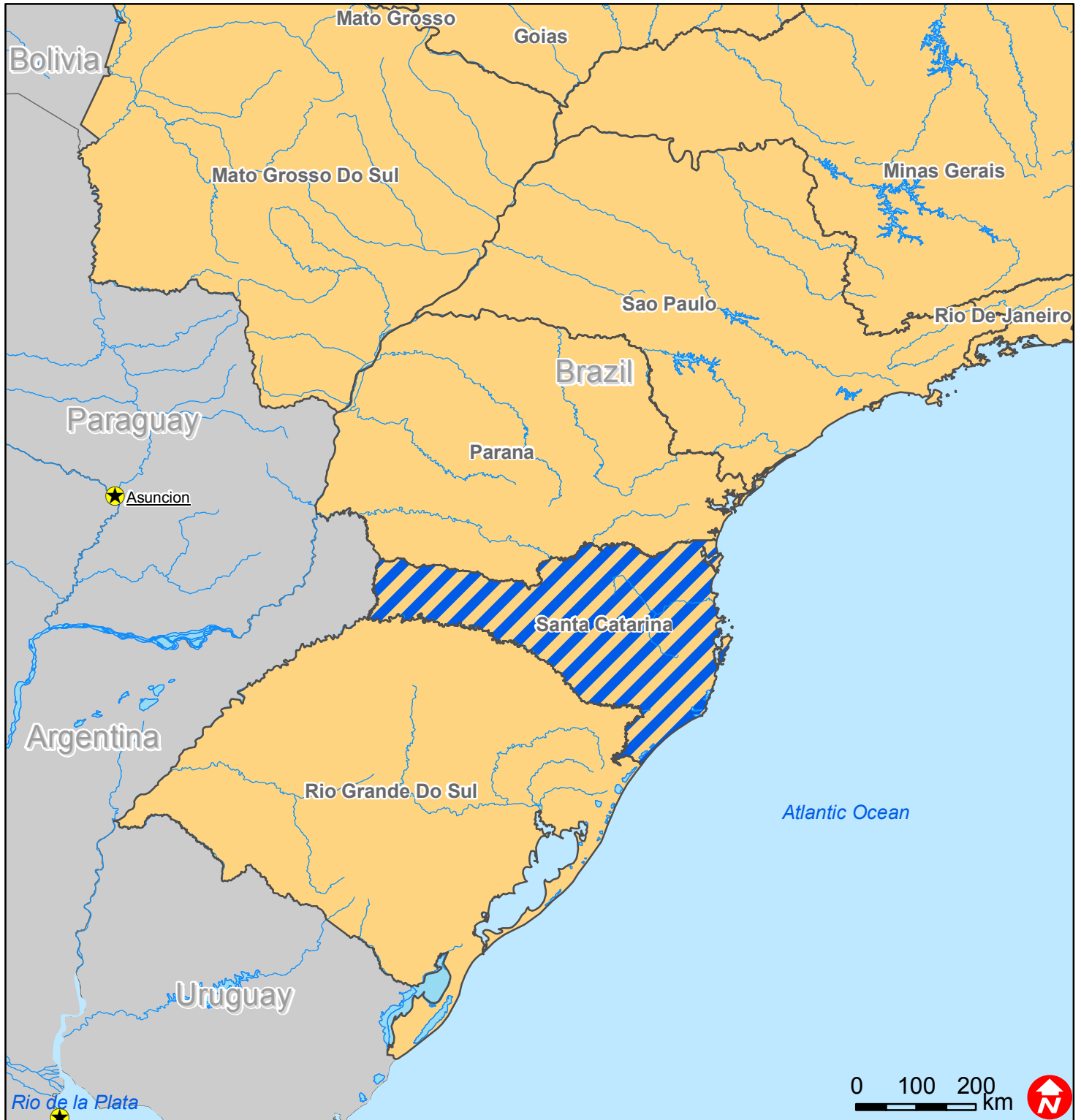
All International Federation assistance seeks to adhere to the [Code of Conduct for the International Red Cross and Red Crescent Movement and Non-Governmental Organizations \(NGO's\) in Disaster Relief](#) and is committed to the [Humanitarian Charter and Minimum Standards in Disaster Response \(Sphere\)](#) in delivering assistance to the most vulnerable.

<p>The International Federation's activities are aligned with its Global Agenda, which sets out four broad goals to meet the Federation's mission to "improve the lives of vulnerable people by mobilizing the power of humanity".</p>	<p>Global Agenda Goals:</p> <ul style="list-style-type: none"> • Reduce the numbers of deaths, injuries and impact from disasters. • Reduce the number of deaths, illnesses and impact from diseases and public health emergencies. • Increase local community, civil society and Red Cross Red Crescent capacity to address the most urgent situations of vulnerability. • Reduce intolerance, discrimination and social exclusion and promote respect for diversity and human dignity.
<p>Contact information</p>	
<p>For further information specifically related to this operation please contact:</p> <ul style="list-style-type: none"> • In Brazil: Leticia Peroli, National Disaster and Relief Department, Brazilian Red Cross; phone: (55 24) 8127 9785; email: leticiaperoli@hotmail.com • In Buenos Aires: Gustavo Ramirez, Regional Representative for the Southern Cone; email: gustavo.ramirez@ifrc.org • In Panama: Jean Pierre Taschereau, Disaster Management Delegate of the Pan American Disaster Response Unit; phone: (507) 316 1001; fax (507) 316 1082; email: jp.taschereau@ifrc.org • In Panama: Maria Alcazar, Resource Mobilization Coordinator, Americas; phone: (507) 380 0250; fax: (507) 317 1304; email: maria.alcazar@ifrc.org • In Geneva: Pablo Medina, Operations Coordinator for the Americas; phone: (41) 79 2173376; fax: (41) 22 730 0395; email pablo.medina@ifrc.org 	

[<DREF budget and map below; click here to return to the title page>](#)



Brazil: Floods



- River
- Capital
- Affected area

DREF OPERATION BUDGET SUMMARY

Annex 1

Brazil Floods Nov 08

MDRBR004

BUDGET CHF

RELIEF NEEDS

Shelter	
Construction Materials	
Clothing & Textiles	
Food	
Seeds & Plants	
Water & Sanitation	
Medical & First Aid	
Teaching Materials	
Utensils & Tools	74,000
Other Supplies & Services	52,000
Total Relief Needs	126,000

CAPITAL EQUIPMENT

Land & Buildings
Vehicles Purchase
Computers & Telecom Equipment
Office/Household Furniture & Equip.
Medical Equipment
Other Machinery & Equipment

TRANSPORT, STORAGE & VEHICLES

Storage - Warehouse	
Distribution & Monitoring	12,850
Transport & Vehicles Costs	5,500
Service fee & Recovery	

PERSONNEL

International Staff	
Regionally Deployed Staff	3,300
National Staff	
National Society Staff	4,500
Consultants	

WORKSHOPS & TRAINING

Workshops & Training

GENERAL EXPENSES

Travel	3,500
Information & Public Relations	
Office running costs	1,200
Communication Costs	1,650
Professional Fees	
Financial Charges	450
Other General Expenses	

PROGRAMME SUPPORT

Programme Support - PSR	11,050
-------------------------	--------

Total Operational Needs	44,000
--------------------------------	---------------

DREF ALLOCATION	170,000
------------------------	----------------
