

DREF operation



International Federation
of Red Cross and Red Crescent Societies

Honduras: Earthquake

DREF operation n° MDRHN001
GLIDE EQ-2009-000108-HND
2 June 2009

The International Federation's Disaster Relief Emergency Fund (DREF) is a source of un-earmarked money created by the Federation in 1985 to ensure that immediate financial support is available for Red Cross and Red Crescent response to emergencies. The DREF is a vital part of the International Federation's disaster response system and increases the ability of national societies to respond to disasters.

CHF 30,000 (USD 28,132 or EUR 19,879) has been allocated from the Federation's Disaster Relief Emergency Fund (DREF) to support the Honduran Red Cross (HRC) in its initial assessments and provision of basic relief assistance to 200 families. Unearmarked funds to repay DREF are encouraged.

Summary: A 7.1 magnitude earthquake struck the northern region of Honduras in the early morning of 28 May 2009. Since the onset of the emergency the Honduran Red Cross has been performing damage and needs assessments. This DREF allocation will provide assistance to the Honduran Red Cross in covering operational expenses. In addition, 1,000 people in temporary shelters will receive food kits. Once assessments are completed, the HRC will draw up a plan of action to provide additional assistance, if necessary.



A Honduran Red Cross volunteer carrying out damage assessments on a road in Puerto Cortes. Source: Honduran Red Cross

This operation is expected to be implemented over three months, and will therefore be completed by 2 September 2009; a Final Report will be made available three months after the end of the operation (by 2 December 2009).

[<Click here for the DREF budget, map or here for contact details>](#)

The situation

An earthquake struck the eastern Caribbean coast of **Honduras** at 2:24 a.m. on 28 May, at a depth of 10 kilometres. The epicentre was located near the island of Roatan. The Permanent Commission of Contingencies (Comisión Permanente de Contingencias - COPECO) issued a green alert throughout the

country and reported a replica of magnitude 4.8 on the same day at 9:06 a.m. A tsunami alert was issued by COPECO, but was later lifted.

The chart below indicates the latest information provided by the disaster management department of the Honduran Red Cross:

Descripti on	Puerto Cortes	La Ceiba	El Progreso	Santa Barbara	San Pedro Sula	La Lima	Tela	Roat an	Coma yagua
Casualties					2	1	1		
Injured	34		13	4				2	
Damaged water systems	40%		Partial damages	10%					
Damaged Electric systems	80%		Re-established						
Transportation	Activated		Partially activated	Activated	Activated				
Damaged public buildings	26	14 schools 1 church	4	1 hospital 3 churches 11 schools	5 educational centres			4	1 church
Damaged houses	235	4		509	4				9
Damaged roads and bridges	13 roads 2 bridges	2 bridges 1 road	1 collapsed bridge	1 road					1 bridge

The local HRC branch in Puerto Cortes as well as a local clinic are flooded due to high tides caused by the earthquake. The patients of the clinic had to be evacuated.

Tremors were also felt in Belize, El Salvador and Guatemala. Damage assessments are being carried out in Belize where the village of Monkey River (on the northern coast) and the Stann Creek district (in Placencia) have sustained damages. However, it is not expected that external assistance will be required for the National Red Cross Societies of Belize, El Salvador and Guatemala.

Coordination and partnerships

The Honduran Red Cross has been coordinating the disaster response with local authorities including COPECO and the municipalities of the affected regions. Partner National Societies (PNS) present in the country have contacted the HRC and the International Federation to offer their support.



A damaged road in Puerto Cortes. Source: Honduran Red Cross

Red Cross and Red Crescent action

Since the beginning of the emergency the Honduran Red Cross, through its local branches, has been performing damage and needs assessments and coordinating the disaster response with the local authorities. The assessments are still ongoing and the International Federation's staff member present in Tegucigalpa has gathered information from the HRC and Partner National Societies (PNS) present in the country which include the American Red Cross, the Canadian Red Cross, the Italian Red Cross, the Spanish Red Cross and the Swiss Red Cross. The HRC has requested DREF funds to complete the damage and need assessments and to procure food items to be distributed to people in shelters in the departments of Yoro, Lempira, Cortes, Santa Barbara and Atlántida.

The International Federation through its Pan American Disaster Response Unit (PADRU) and the Regional Representation for Central America and Mexico have been in constant contact with the Honduran Red Cross since the onset of the emergency, as well as with National Societies in the countries where the tremors were felt: the Belize Red Cross Society, the Guatemalan Red Cross and the Salvadoran Red Cross Society.

PADRU has contacted the United Nations Office for the Coordination of Humanitarian Affairs (OCHA), the Spanish Agency for International Development Cooperation (Agencia Espanola de Cooperacion Internacional para el Desarrollo, AECID), the International Organization for Migration (IOM) and is also coordinating with Partner National Societies. Once damage assessments are completed, the HRC will revise the plan of action in coordination with PADRU, if additional assistance is needed.

The needs

Beneficiary selection: The HRC is currently completing damage and needs assessments. The communities that to date have been identified to be the most affected are the northern areas of Puerto Cortes, Santa Barbara, El Progreso and San Pedro Sula. Specific needs will be identified once all damage assessments are completed. DREF funding will enable the National Society of Honduras to cover costs of initial assessments (mobilization and distribution) and procurement of food items to be distributed to the affected people in shelters.

The proposed operation

A plan of action will be completed once the HRC finishes carrying out evaluations of the damages caused by the earthquake. For the time being, the National Society will procure food items for 200 families to distribute in temporary shelters in the departments of Yoro, Lempira, Cortes, Santa Barbara and Atlántida.

Relief distributions (food and basic non-food items)

Objective: 200 families in temporary shelters in the most affected areas will benefit with food kits.

Activities planned:

- Identification of affected areas.
- Develop beneficiary targeting strategy and registration system to deliver intended assistance.
- Distribute relief supplies and control supply movements from point of dispatch to end user.
- Monitor and evaluate the relief activities and provide reporting on relief distributions.

How we work

All International Federation assistance seeks to adhere to the [Code of Conduct for the International Red Cross and Red Crescent Movement and Non-Governmental Organizations \(NGO's\) in Disaster Relief](#) and is committed to the [Humanitarian Charter and Minimum Standards in Disaster Response \(Sphere\)](#) in delivering assistance to the most vulnerable.

The International Federation's activities are aligned with its Global Agenda, which sets out four broad goals to meet the Federation's mission to "improve the lives of vulnerable people by mobilizing the power of humanity".

Global Agenda Goals:

- Reduce the numbers of deaths, injuries and impact from disasters.
- Reduce the number of deaths, illnesses and impact from diseases and public health emergencies.
- Increase local community, civil society and Red Cross Red Crescent capacity to address the most urgent situations of vulnerability.
- Reduce intolerance, discrimination and social exclusion and promote respect for diversity and human dignity.

Contact information

For further information specifically related to this operation please contact:

- **In Honduras:** Maria Elisa Alvarado, Honduran Red Cross, General Director, phone: (504) 237 4558; email: direcciongeneral@honduras.cruzroja.org.
- **In Honduras:** Nelson Aly, country project manager, Honduras; phone: (504) 220 4009; email: nelson.alyrodriguez@ifrc.org
- **In Panama:** Fabricio López, Regional Representative for Central America and Mexico; email: fabricio.lopez@ifrc.org; phone: (507) 380 0250; fax: (507) 317 1304.
- **In Panama:** Ariel Kestens, Head of the Pan American Disaster Response Unit, email: ariel.kestens@ifrc.org; phone: (507) 316 001; fax: (507) 316 1082.
- **In Panama:** Francisco Maldonado, disaster management delegate of the Pan American Disaster Response Unit, email: padru.rit04@ifrc.org; phone: (507) 316 001; fax: (507) 316 1082.
- **In Geneva:** Pablo Medina, Operations Coordinator for the Americas; email: pablo.medina@ifrc.org; phone: (41) 22 730 4300.

[<DREF budget and map below; click here to return to the title page>](#)

DREF OPERATION BUDGET SUMMARY
HONDURAS EARTHQUAKE

Annex I
MDRHN001

BUDGET CHF

RELIEF NEEDS

Shelter	
Construction Materials	
Clothing & Textiles	
Food	17,853
Seeds & Plants	
Water & Sanitation	
Medical & First Aid	
Teaching Materials	
Utensils & Tools	
Other Supplies & Services	
Total Relief Needs	17,853

CAPITAL EQUIPMENT

Land & Buildings	
Vehicles Purchase	
Computers & Telecom Equipment	
Office/Household Furniture & Equip.	
Medical Equipment	
Other Machinery & Equipment	

TRANSPORT, STORAGE & VEHICLES

Storage - Warehouse	
Distribution & Monitoring	
Transport & Vehicles Costs	1,785
Service fee & Recovery	

PERSONNEL

International Staff	
Regionally Deployed Staff	
National Staff	
National Society Staff	5,579
Consultants	

WORKSHOPS & TRAINING

Workshops & Training	
----------------------	--

GENERAL EXPENSES

Travel	
Information & Public Relations	1,116
Office running costs	334
Communication Costs	268
Professional Fees	
Financial Charges	1,116
Other General Expenses	

PROGRAMME SUPPORT

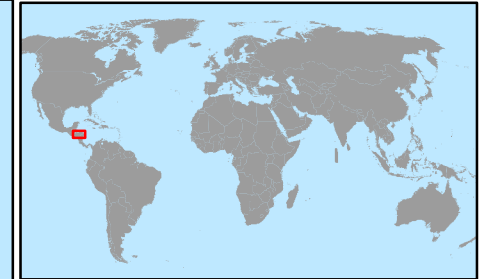
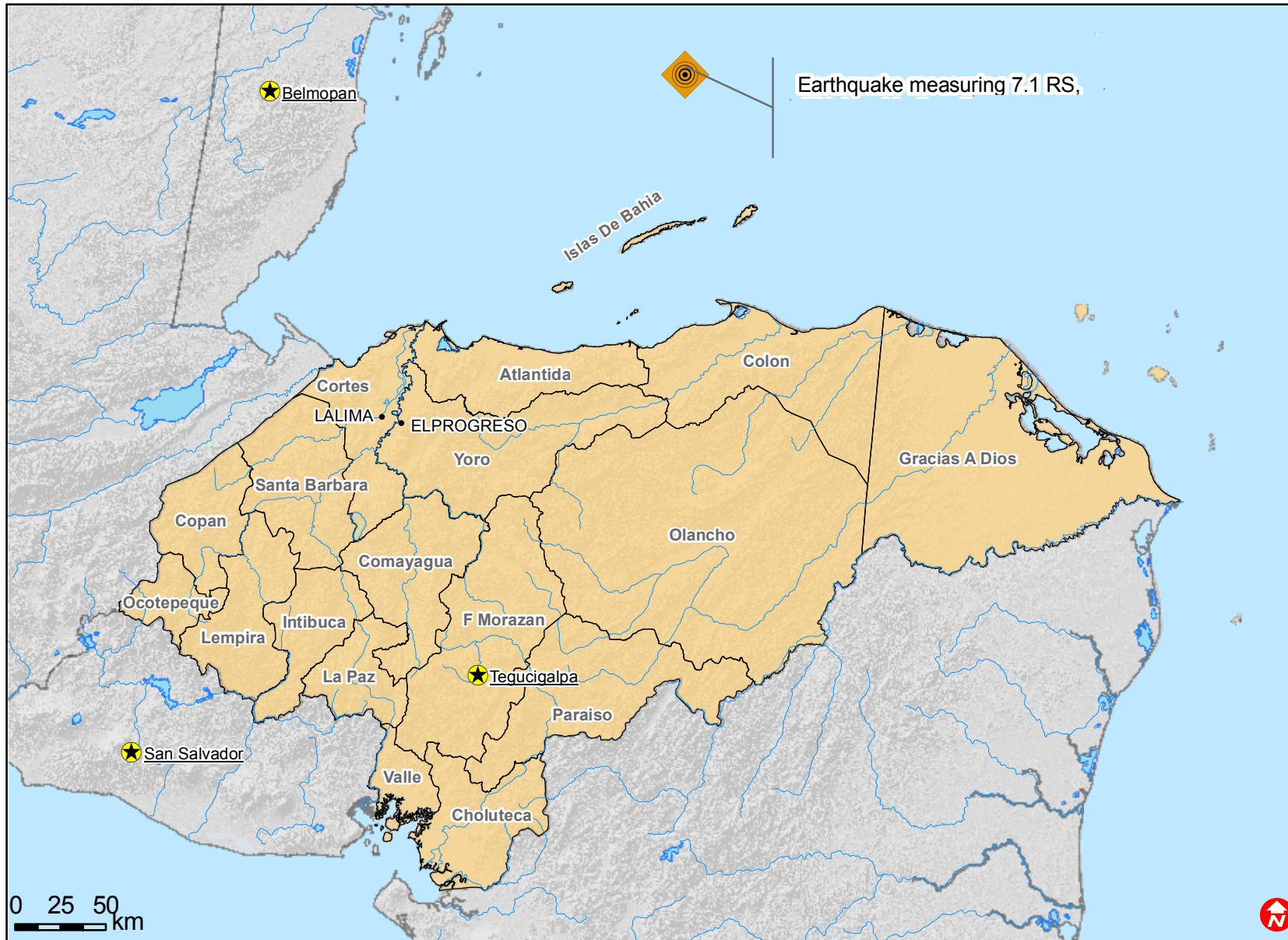
Programme Support - PSR	1,950
-------------------------	-------

Total Operational Needs **12,147**

DREF ALLOCATION **30,000**



Honduras: Earthquake



- Provinces
- Lakes
- Rivers
- Capitals
- Cities
- Earthquakes