



GTCC COUNTRY SUPPORT PLATFORM (CSP)

BACKGROUND

The **Global Task Force on Cholera Control (GTCC)** is a partnership of more than 50 institutions, including NGOs, academic institutions, and UN agencies, with a secretariat hosted by the World Health Organization (WHO). The GTCC brings together groups working across multiple sectors to support countries in the implementation of the global cholera prevention strategy, *Ending Cholera: A Global Roadmap to 2030*, which targets a 90% reduction in cholera deaths globally and cholera elimination in 20 countries by 2030.


Cholera-affected countries have called for additional technical support from the GTCC in the development and implementation of their **National Cholera Plans (NCPs)**. In response to countries' needs, the GTCC is establishing a Country Support Platform that will support efforts – primarily at national level – to control and eliminate cholera.

The **International Federation of the Red Cross and Red Crescent Societies (IFRC)** has been selected to host the country support platform.

OBJECTIVES


The CSP will provide multisectoral operational support as well as advocacy, coordination, and policy guidance necessary for countries to develop, fund, implement and monitor their NCPs effectively, ensuring consistency and alignment with the Global Roadmap.

During the coming years, the CSP will strive to achieve the following outcomes:



OUTCOME 1

Cholera-affected countries have an NCP and a multisectoral coordination mechanism to align government, national actors, GTCC partners, and key stakeholders towards a shared strategy.



OUTCOME 2

With support from CSP advocacy and resource mobilization efforts, Cholera-affected countries have mobilized resources toward the funding needs identified in their NCPs.



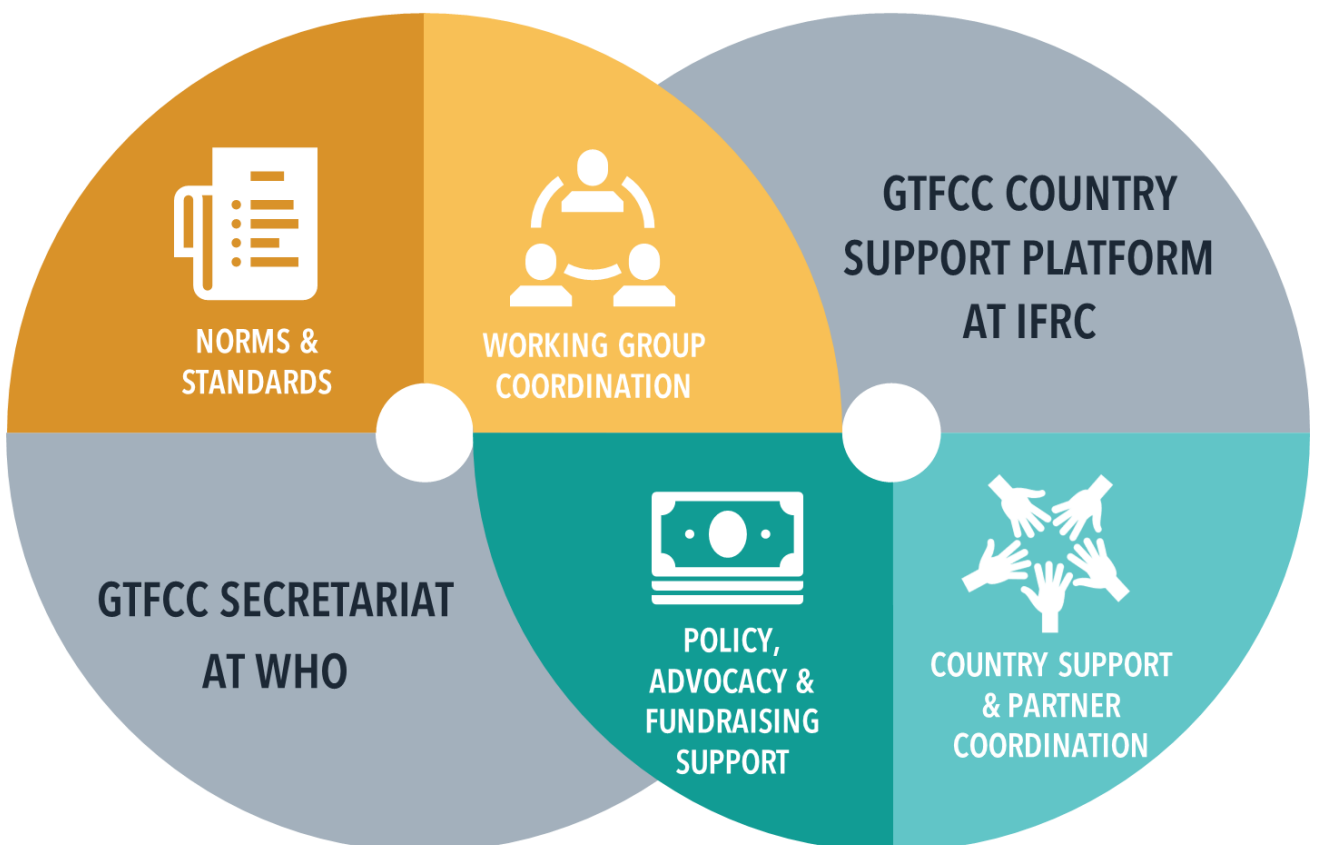
OUTCOME 3

Cholera-affected countries have received multisectoral technical support and capacity building for the formulation and implementation of their NCPs.

FUNCTION

The CSP will be an integral part of the GTFCC structure with the flexibility and resources to provide countries with multi-sectorial support. The CSP and the Secretariat will work as “one GTFCC” in close cooperation. The mission of the CSP is country support. As such, the majority of CSP staff will be located in country.

- **Support at global level** will include technical expertise from GTFCC partners including coordination of a pool of experts for short- or medium-term deployments based on needs expressed by countries, as well as advocacy and fundraising expertise.
- **Support at country level** will include CSP program managers working closely with countries to develop their national cholera control programmes.



MILESTONES FOR THE NEXT 3 YEARS



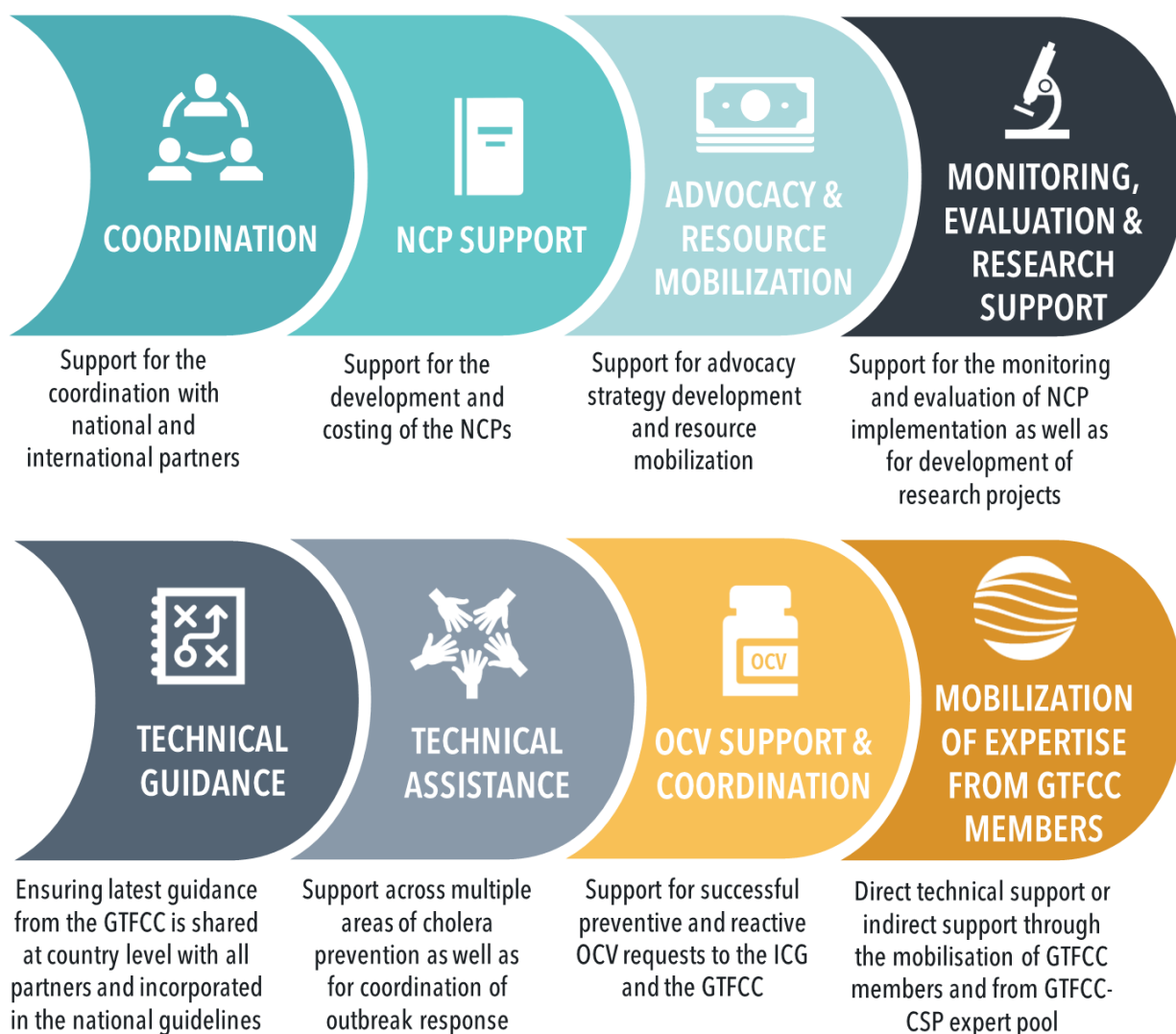
FUNDING

The Bill & Melinda Gates Foundation will support the establishment of the Country Support Platform through a grant for an initial period of three years which is channeled directly by the Foundation to IFRC. Resource gaps for country support are in the process of being identified, and a subsequent call for additional funding will be issued.

ACTIVITIES

In support of countries, the CSP will:

- Ensure that cholera interventions are coherent, evidence based, aligned with the government and Global Roadmap objectives, and summarized into a comprehensive National Cholera Plan (NCP)
- Facilitate the coordination of technical assistance at national level from GTFCC members and other stakeholders
- Support advocacy and resource mobilization efforts for the implementation of countries' NCPs
- Provide support for the monitoring & evaluation of NCPs as well as implementation of priority research projects
- Provide coordination for GTFCC partners' activities to ensure coherent, optimized, and synergized interventions and adherence to GTFCC approved guidance, standards, and quality assurance across different regions



HOW CAN GTFCC PARTNERS AND DONORS HELP THE CSP?

GTFCC partners and donors can contribute to country support for cholera control by:

- **Coordination:** Helping the CSP in supporting national coordination – sharing information on activities and projects implemented in cholera affected countries
- **Technical assistance:** Supporting the CSP with technical expertise – responding directly to countries requests or indirectly through expert loan (skill-based sponsorship) or through the GTFCC – CSP expert pool
- **Advocacy & Resource Mobilization:** Aligning as one behind the national cholera control plans to help governments engage in cholera elimination in a structured and coordinated way.

FOR MORE INFORMATION

To express interest in receiving support from or providing expertise to the CSP please contact the Interim Inception Team: robert.fraser@ifrc.org and alexandra.machado@ifrc.org with copy to gtfccsecretariat@who.int.