

2022



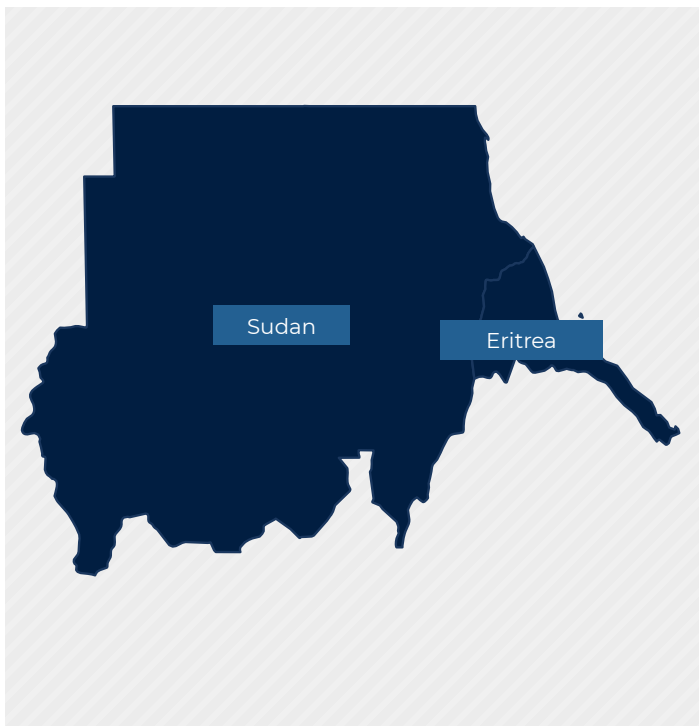
Sudan © Anette Selmer-Andresen / IFRC

KHARTOUM

IFRC CLUSTER SUPPORT PLAN

2022 funding requirement in Swiss francs

6.4 million



National Societies

2



National Society Staff

1,010



National Society Volunteers

40,000



People to be reached

1.1 million

This document details the IFRC's support in areas agreed upon with the relevant National Society. The IFRC seeks resources to carry out this country/cluster plan listed here as funding requirements. For information on the IFRC's emergency operations in this country/cluster, please visit [ifrc.org/appeals](https://www.ifrc.org/appeals).



Sudan © Anette Selmer-Andresen / IFRC

SITUATIONAL ANALYSIS

Population

47.4 million

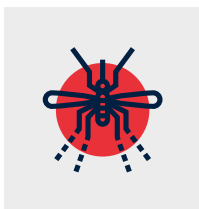
Human Development Index Ranking

170 – Sudan, 180 – Eritrea

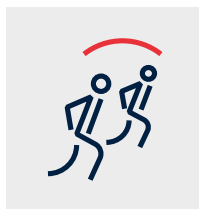
Vulnerability to disasters



Floods



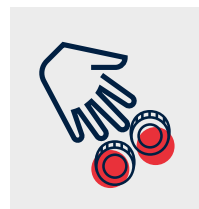
Malaria



Migration



Conflict



Poverty

Eritrea and Sudan, the countries that make up the IFRC's Khartoum region, have a combined population of over 47 million people. This East African region faces political and economic instability, conflict, and environmental disasters, resulting in significant internal and international displacement. On the UNDP's 2019 Human Development Index, Sudan and Eritrea rank 170th and 180th respectively, out of 185 countries.

The region is also home to large numbers of refugees, as many people from Ethiopia and Eritrea have fled to Sudan due to instability and wars in the Horn of Africa. In late 2021 alone, a new wave of 56,000 Ethiopian refugees crossed into Sudan from Tigray.

Natural disasters, including flooding and droughts, have damaged communities' resilience and limited their capacity to cope. Flooding has also led to an increase in water-borne illness and rising malaria rates throughout the region due to poor sanitation facilities and stagnant pools of water acting as breeding grounds for mosquitoes.

Ongoing IFRC appeals in the region include the Floods Emergency Appeal, the Tigray Population Movement appeal and the COVID-19 response. In 2022, these operations will continue to dominate the time and attention of the Sudanese National Society.

For information on the IFRC's emergency operations in this country/cluster, please visit ifrc.org/appeals.



Sudan © Anette Selmer-Andresen / IFRC

ROLE OF THE NATIONAL SOCIETIES

These two National Societies have very different levels of engagement due to different operating contexts within their respective countries.

In 2018 the government of Eritrea suspended all field-level activities of the Eritrean National Society. Although the government has since conducted several audits, the suspension remains in place, and as a result, partners have suspended support to the National Society.

Before this suspension, the National Society's activities had been limited to providing ambulance services across six provincial capitals. In 2022, the IFRC will focus on engagement with Eritrean state authorities and National Society leadership to address existing challenges and chart a pathway towards lifting the suspension and allowing the National Society to resume humanitarian and development operations.

In Sudan, National Society operations are much more active. They respond to emergencies while implementing long-term disaster risk reduction, climate change adaptation, health and water, sanitation and hygiene (WASH) programmes. The National Society is also active in refugee response operations, where it cooperates closely with UNHCR, the World Food Programme, and other Red Cross Red Crescent Movement partners.



Sudan © Anette Selmer-Andresen / IFRC

MEMBERSHIP COORDINATION AND MOVEMENT FOOTPRINT

Name of Partner National Society	Climate	Crises	Health	Migration	Inclusion	Engaged	Accountable	Trusted
Turkish Red Crescent		✓	✓					
Qatar Red Crescent		✓	✓			✓	✓	✓
Danish Red Cross				✓		✓	✓	✓
German Red Cross	✓	✓			✓	✓	✓	✓
Swedish Red Cross	✓	✓				✓	✓	✓
Spanish Red Cross	✓	✓				✓	✓	✓
Swiss Red Cross			✓			✓	✓	✓
Netherlands Red Cross	✓		✓					



GLOBAL FLAGSHIPS

Local action – stronger National Societies

In 2022, the IFRC will support the Sudanese National Society to implement its Transformation Roadmap Plan centred on reforming the National Society's governance, management and operations in 11 thematic areas including improving finance know how, more qualitative data collection, better logistical support, strengthened disaster management and stronger external engagement with stakeholders. This plan will build a strong, credible National Society with sustainable resources and position the National Society as a strong and effective local humanitarian actor.

Going to scale on humanitarian action and risk reduction

The IFRC will also provide technical assistance to the Sudanese National Society to better respond to humanitarian needs at scale while enhancing risk reduction programming.

Global cash leadership

The IFRC will support the Sudanese National Society to introduce Cash and Voucher Assistance modalities in 2022, in line with the IFRC goal of ensuring that 50 per cent of emergency response and recovery assistance is in the form of cash by 2025.

Reduce cholera related deaths by 50 per cent

The IFRC will support the Sudanese National Society to reduce cholera-related deaths by promoting safe access to WASH facilities and raising awareness around cholera and acute diarrhoeal diseases. It will also support the Sudanese National Society in targeting 20,000 people in 2022 to reduce the practice of open defecation.

Global health security – epidemic and pandemic preparation and response

To combat the COVID-19 pandemic, the IFRC will support the Sudanese National Society to implement risk communication and community engagement activities to raise awareness about handwashing practices and physical distancing to reduce the spread of the virus. The IFRC will also support the Sudanese National Society in raising awareness to increase the uptake of COVID-19 vaccines.



CLIMATE AND ENVIRONMENTAL CRISES

Funding requirement in Swiss francs

1 million

People to be reached

600,000



The Khartoum region is severely affected by climate crises, with seasonal flooding and droughts. As a result of these natural disasters, millions of people are pushed into acute food insecurity every year and rely on humanitarian assistance for survival.

Climate-related vulnerabilities often multiply other shocks, including conflict, displacement and economic crises, which reduce communities' capacity to cope. Given the complexity and multi-faceted nature of climate and manmade disasters across the region, investing in early warning and early action systems and mechanisms is vital.

The IFRC will support the Sudanese National Society in strengthening its capacity in early warning and early action through training, tools, and approaches. The IFRC will also leverage technical expertise and resources from the Climate Centre and Partner National Societies to ensure a coordinated approach across preparedness and response initiatives.

The IFRC will also support the Sudanese National Society in initiating tree planting and care activities. This will integrate with livelihoods programming while strengthening food security in the region. The IFRC will also support the Sudanese National Society to promote energy-saving cooking and lighting solutions to protect the environment.

SUPPORT

- Improve early warning monitoring capability
- Engage public authorities in climate change advocacy
- Initiate tree planting and care activities
- Promote energy-saving cooking and lighting solutions



EVOLVING CRISES AND DISASTERS

Funding requirement in Swiss francs
1.94 million

People to be reached
1.1 million



Crises and disasters across the Khartoum region are often complex and protracted. Environmental problems exacerbate underlying vulnerabilities, political instability and conflict are common, and large flows of migrants and internally displaced people pose challenges for humanitarian service delivery.

The Sudanese National Society is currently building an emergency operations centre to improve coordination in emergencies. In 2022, the IFRC will support this centre by supporting the National Society to strengthen its logistics capacity through developing and implementing a National Warehousing Policy. This will reduce costly charges incurred while importing and moving goods throughout the country while improving coordinated service provision during emergencies.

In 2022, the IFRC will continue supporting the Sudanese National Society through disaster relief and emergency appeals responding to flooding, complex emergencies, population movements and the COVID-19 pandemic.

The IFRC will also strengthen the Sudanese National Society's capacity to prepare and respond to evolving crises and disasters. The IFRC will support the National Society in enhancing their early warning and early action mechanisms and improving their anticipatory actions to mitigate risks.

To enhance the dignity of communities and individuals affected by protracted crises and disasters, the IFRC supports the Sudanese National Society to begin implementing Cash and Voucher Assistance in emergencies. One element of this is recruiting a National Society cash officer who will manage the program and improve capacity around Cash and Voucher Assistance across National Society branches.

SUPPORT

- Enhance early warning early action mechanisms
- Develop and implement a National Warehousing Policy in Sudan
- Implement Cash and Voucher Assistance in emergencies in Sudan



Sudan © Anette Selmer-Andresen / IFRC

GROWING GAPS IN HEALTH AND WELL-BEING

Funding requirement in Swiss francs
920,000

People to be reached
500,000



Poor water, sanitation and hygiene conditions are common throughout the Khartoum region. This contributes to poor public health outcomes as cholera, diarrhoeal and water-borne diseases can spread rapidly under these conditions.

The IFRC has mobilized partners to build up cholera preparedness and mitigation interventions throughout the region in recent years. In 2022, the IFRC will support the Sudanese National Society to identify and bridge gaps in WASH programming, including through community hygiene awareness activities and the construction of water supply systems.

Other health needs across the region continue to grow, particularly among migrants and internally displaced populations. However, health services have been stretched to a breaking point due to a lack of medicines, equipment, staff and inadequate infrastructure. The increasing cost of medicine and medical supplies also has limited access to life-saving care throughout the region, disproportionately impacting women, adolescents and children.



16%

of the rural Sudanese population
has access to hygiene and health services

➔ SUPPORT

- Review WASH policy and bridge gaps in programming
- Construct water supply systems for 20,000 people in Sudan
- Mobilize resources to sustain service provision and ensure access to public health commodities
- Enhance mobile outreach for health service provision in hard-to-reach Sudanese communities



Eritrea © IFRC

MIGRATION AND IDENTITY

Funding requirement in Swiss francs
800,000

People to be reached
500,000



The Khartoum region is located within the Horn of Africa's large, complex and constantly evolving migration network. The region is simultaneously a source, destination and transitory stop for migrants and refugees.

Sudan is a transit country for East African and Middle Eastern migrants and refugees as they move along the well-established central Mediterranean route towards North Africa and Europe. While thousands of migrants and refugees have passed through Sudan over the past decade, many have also settled temporarily in Kassala, Khartoum and other urban areas.

In 2022, the IFRC will continue to assess Sudan's migration situation and coordinate with Movement partners to enhance the National Society's programmes for migrants and internally displaced people. The IFRC will also look to establish stationary and mobile Humanitarian Service Points along migratory routes in the region while providing technical humanitarian diplomacy support.



8 million
people in Sudan require humanitarian
or protection assistance

➔ SUPPORT

- Establish and scale-up Humanitarian Service Points along migratory routes
- Ensure coordination with partners and local authorities for migration-related activities
- Develop Migration and Displacement strategy
- Provide technical support to the Sudanese National Society on migration and humanitarian diplomacy



Eritrea © IFRC

VALUES, POWER AND INCLUSION

Funding requirement in Swiss francs

100,000

People to be reached

300,000

The Sudanese National Society has started mainstreaming protection, gender and inclusion (PGI) policies to ensure that programmes and operations are contextually appropriate, inclusive and leave no one behind. As part of this, the National Society recently recruited a protection, gender and inclusion officer to build capacity around PGI, including developing a National Society-wide strategy.

The IFRC is supporting the National Society throughout this process, including establishing coordination mechanisms to help integrate PGI into operations and programmes. The IFRC will also provide technical support to the National Society and its branches on the systematic application of the IFRC's Minimum Standards for PGI in emergencies.

As part of this, the IFRC will support the National Society to strengthen its capacity around preventing and responding to sexual and gender-based violence. The IFRC will also support the National Society in developing child safeguarding policies and implementation plans.

SUPPORT

- Develop strategy on protection, gender and inclusion
- Roll out Minimum Standards for Protection, Gender and Inclusion in emergencies
- Strengthen capacity to prevent and respond to sexual and gender-based violence
- Support the development of child safeguarding policies and implementation plans



Sudan © Anette Selmer-Andresen / IFRC

ENABLER 1 – ENGAGED

Funding requirement in Swiss francs

640,000

The focus on National Society Development ensures that Khartoum Cluster National Societies can effectively respond to immediate humanitarian needs and protracted disasters in a sustainable manner while contributing to more resilient communities.

The IFRC will support the two National Societies to strengthen their auxiliary role in humanitarian diplomacy initiatives. As part of this, the IFRC will support the Sudanese National Society to develop a communications strategy to better engage with partner organizations, government authorities and the communities they serve. This will enable the National Society to influence public behaviour and policy change more effectively while increasing public trust.

Engaging with the government of Eritrea is a priority in 2022, and the IFRC will support the Cluster Delegation in developing a strategy to do so, to lift the suspension and allow the Red Cross Society of Eritrea to resume its humanitarian and development activities.

SUPPORT

- Align National Society strategic plans with the IFRC's Strategy 2030
- Strengthen National Societies' auxiliary role through humanitarian diplomacy
- Develop a strategy to engage with the government of Eritrea



Sudan © Juozas Cernius / IFRC

ENABLER 2 – ACCOUNTABLE

Funding requirement in Swiss francs

195,000

Financial sustainability is key to ensuring credible and sustainable humanitarian services and programmes. In 2022, the IFRC will support the Khartoum Cluster Delegation to strengthen resource mobilization capacity through domestic and digital fundraising, enabling longer-term programming and greater self-sufficiency.

The IFRC will also support the Cluster Delegation to enhance accountability throughout its operations. In Sudan, the IFRC will support the National Society in developing and implementing a risk management framework and a cost recovery mechanism. It will also support the National Society in strengthening its internal control system by developing anti-fraud and anti-corruption policies, tools and guidelines.

The IFRC will also support the Sudanese National Society in analyzing and monitoring its performance for all planned activities to enhance transparency and accountability to donors and communities served.

SUPPORT

- Strengthen resource mobilization capacity through domestic and digital fundraising
- Develop a risk management framework and cost recovery mechanism in Sudan
- Analyze and monitor performance for all planned activities



ENABLER 3 – TRUSTED

Funding requirement in Swiss francs

820,000

In 2021, the Sudanese National Society began reviewing its Statute Law. In 2022, the IFRC will support the National Society in continuing this process while supporting the creation of branch development plans and implementing the National Society's strategic plan.

The IFRC will also support the Eritrean National Society in engaging with state authorities in 2022, in the aim that the government will lift the suspension and allow the National Society to resume providing humanitarian and development support to communities.

The IFRC will also work to improve financial sustainability in the Khartoum Cluster Delegation through the rollout of enterprise resource planning software to enable National Societies to track their supply chains and key finance, procurement and HR parameters.

The IFRC recognizes that youth volunteers are critical catalysts of behavioural change and local action. In 2022, the IFRC will enhance their engagement by supporting the Sudanese National Society in creating a database of all youth volunteers. It will also support the National Society to include youth within its governance structure.

Institutionalizing the IFRC's community engagement and accountability policies and developing related National Society strategies will help to grown community trust. The IFRC will also support National Societies to include feedback mechanisms in all programmes. This will enable improved service delivery while creating stronger engagement with communities.

SUPPORT

- Create a database of all youth volunteers
- Include youth within National Society governance structures
- Develop community engagement and accountability policies at the National Society level
- Integrate feedback mechanisms into all programmes to enhance accountability



The International Federation of Red Cross and Red Crescent Societies (IFRC) is the world's largest humanitarian network, with **192 National Red Cross and Red Crescent Societies** and around **14 million volunteers**. Our volunteers are present in communities before, during and after a crisis or disaster. We work in the most hard to reach and complex settings in the world, saving lives and promoting human dignity. We support communities to become stronger and more resilient places where people can live safe and healthy lives, and have opportunities to thrive.

Contact Information

Farid Aiywar

Head of Khartoum Cluster

T +249 900 908 916

farid.aiywar@ifrc.org

International Federation of Red Cross
and Red Crescent Society
